

**Libertarian National Committee - Membership Report**

**"Donor" Totals - Apr-19**

**4 Year & 12 Month Comparison**

	Dec-15	Dec-16	Dec-17	Dec-18	Apr-18	May-18	Jun-18	Jul-18	Aug-18	Sep-18	Oct-18	Nov-18	Dec-18	Jan-19	Feb-19	Mar-19	Apr-19
Active w-MEM	11184	18592	14445	14494	14895	14705	14498	14931	15219	15134	15100	14955	14494	14278	14294	14271	14187
Active w/out MEM	509	1814	553	514	544	549	536	532	534	528	531	525	514	496	503	502	501
<b>Total Active Donors</b>	<b>11693</b>	<b>20406</b>	<b>14998</b>	<b>15008</b>	<b>15439</b>	<b>15254</b>	<b>15034</b>	<b>15463</b>	<b>15753</b>	<b>15662</b>	<b>15631</b>	<b>15480</b>	<b>15008</b>	<b>14774</b>	<b>14797</b>	<b>14773</b>	<b>14688</b>
<b>Percent Change</b>					<b>0.55%</b>	<b>-1.20%</b>	<b>-1.44%</b>	<b>2.85%</b>	<b>1.88%</b>	<b>-0.58%</b>	<b>-0.20%</b>	<b>-0.97%</b>	<b>-3.05%</b>	<b>-1.56%</b>	<b>0.16%</b>	<b>-0.16%</b>	<b>-0.58%</b>
Lapsed/Drop MEM	909	1016	1072	1184	829	945	1154	784	794	896	969	962	1184	1077	839	1050	871
Lapse w/out MEM	30	27	23	27	16	41	34	19	21	32	29	30	27	21	15	23	24
<b>Lapsed/Drop Total</b>	<b>939</b>	<b>1043</b>	<b>1095</b>	<b>1211</b>	<b>845</b>	<b>986</b>	<b>1188</b>	<b>803</b>	<b>815</b>	<b>928</b>	<b>998</b>	<b>992</b>	<b>1211</b>	<b>1098</b>	<b>854</b>	<b>1073</b>	<b>895</b>
<b>Percent Change</b>					<b>-15.67%</b>	<b>16.69%</b>	<b>20.49%</b>	<b>-32.41%</b>	<b>1.49%</b>	<b>13.87%</b>	<b>7.54%</b>	<b>-0.60%</b>	<b>22.08%</b>	<b>-9.33%</b>	<b>-22.22%</b>	<b>25.64%</b>	<b>-16.59%</b>
New Donors w-MEM	103	321	444	159	258	233	203	547	353	215	265	253	159	199	227	230	180
New w/out MEM	6	11	15	14	15	35	13	14	18	17	13	8	14	3	2	15	15
<b>New Total</b>	<b>109</b>	<b>332</b>	<b>459</b>	<b>173</b>	<b>273</b>	<b>268</b>	<b>216</b>	<b>561</b>	<b>371</b>	<b>232</b>	<b>278</b>	<b>261</b>	<b>173</b>	<b>202</b>	<b>229</b>	<b>245</b>	<b>195</b>
<b>Percent Change</b>					<b>-22.22%</b>	<b>-1.83%</b>	<b>-19.40%</b>	<b>159.72%</b>	<b>-33.87%</b>	<b>-37.47%</b>	<b>19.83%</b>	<b>-6.12%</b>	<b>-33.72%</b>	<b>16.76%</b>	<b>13.37%</b>	<b>6.99%</b>	<b>-20.41%</b>
Renewed w-MEM	792	723	651	564	645	522	744	670	729	596	670	564	564	662	628	797	607
Renewed w/out MEM	20	8	4	2	12	11	8	1	5	9	19	16	2	0	20	7	8
<b>Total Renewals</b>	<b>812</b>	<b>731</b>	<b>655</b>	<b>566</b>	<b>657</b>	<b>533</b>	<b>752</b>	<b>671</b>	<b>734</b>	<b>605</b>	<b>689</b>	<b>580</b>	<b>566</b>	<b>662</b>	<b>648</b>	<b>804</b>	<b>615</b>
<b>Percent Change</b>					<b>-22.61%</b>	<b>-18.87%</b>	<b>41.09%</b>	<b>-10.77%</b>	<b>9.39%</b>	<b>-17.57%</b>	<b>13.88%</b>	<b>-15.82%</b>	<b>-2.41%</b>	<b>16.96%</b>	<b>-2.11%</b>	<b>24.07%</b>	<b>-23.51%</b>
<b>Total "MEM" *</b>	<b>135197</b>	<b>145814</b>	<b>138815</b>	<b>137321</b>	<b>135249</b>	<b>135435</b>	<b>135656</b>	<b>136255</b>	<b>136533</b>	<b>136720</b>	<b>136952</b>	<b>137205</b>	<b>137321</b>	<b>137535</b>	<b>137726</b>	<b>137974</b>	<b>138141</b>
<b>Percent Change</b>					<b>0.18%</b>	<b>0.14%</b>	<b>0.16%</b>	<b>0.44%</b>	<b>0.20%</b>	<b>0.14%</b>	<b>0.17%</b>	<b>0.18%</b>	<b>0.08%</b>	<b>0.16%</b>	<b>0.14%</b>	<b>0.18%</b>	<b>0.12%</b>
<b>Total "LIFETIME" *</b>	<b>2458</b>	<b>2571</b>	<b>2618</b>	<b>2652</b>	<b>2580</b>	<b>2585</b>	<b>2594</b>	<b>2636</b>	<b>2635</b>	<b>2643</b>	<b>2643</b>	<b>2646</b>	<b>2652</b>	<b>2652</b>	<b>2658</b>	<b>2668</b>	<b>2674</b>
<b>Total "BSM"</b>	<b>11045</b>	<b>19003</b>	<b>14668</b>	<b>14639</b>	<b>14891</b>	<b>14819</b>	<b>14634</b>	<b>14955</b>	<b>15298</b>	<b>15163</b>	<b>15150</b>	<b>15016</b>	<b>14639</b>	<b>14385</b>	<b>14372</b>	<b>14327</b>	<b>14324</b>

\* Note: 01/18 Drop in Total Mem & TL Lifetime is result of PNCOA & Death Record append of 160k national records resulting in about 6k newly identified deceased effecting 80+ "active" record.

**Last Year vs. This Year**

	Apr-18	Apr-19	Change	12 Mo Ave		
Active w-MEM	14895	14187	-4.75%	14672	<u>Active Donors w-MEM =</u>	14187
Active w/out MEM	544	501	-7.90%	521	<u>Lapsed &amp; Zero Dues MEM =</u>	123954
<b>Total Active Donors</b>	<b>15439</b>	<b>14688</b>	<b>-4.86%</b>	<b>15193</b>	<u>Total "MEM" w-Signed Certificate =</u>	138141
Lapsed/Dropped	845	895	5.92%	987	<u>Member Signed Certificate =</u>	"MEM"
New Donors	273	195	-28.57%	269	<u>Total "BSM" =</u>	14324
Renewals	657	615	-6.39%	655	<u>Bylaws Defined Sustaining Member =</u>	"BSM"

Apr-19 MEMBERSHIP BY STATE --- ACTIVE AND NON ACTIVE

SUSTAINING MEMBERSHIP STATE RANKINGS - "BSM"

STATE	TOTAL "MEM"	ACTIVE "MEM"	ACTIVE "SUB"	TOTAL "ACTIVE"	TOTAL "BSM"	STATE	TOTAL "MEM"	ACTIVE "MEM"	ACTIVE "SUB"	TOTAL "ACTIVE"	TOTAL "BSM"
AK	680	67	1	68	67	MT	574	58	3	61	59
AL	1836	204	3	207	205	NC	3506	379	11	390	381
AR	927	107	2	109	108	ND	246	35	2	37	36
AZ	3247	329	13	342	334	NE	664	84	0	84	85
CA	18763	1550	62	1612	1558	NH	1452	175	4	179	174
CO	3900	457	9	466	459	NJ	3044	312	11	323	310
CT	1491	155	8	163	158	NM	1189	142	2	144	145
DC	369	39	2	41	39	NV	1895	182	14	196	181
DE	412	54	3	57	52	NY	5089	686	33	719	685
FL	8309	802	31	833	809	OH	5110	644	13	657	647
GA	5884	397	13	410	408	OK	1126	160	3	163	158
HI	539	54	4	58	54	OR	2223	157	13	170	156
IA	1077	125	1	126	124	PA	5954	592	20	612	599
ID	806	74	2	76	77	RI	309	32	3	35	33
IL	4463	476	14	490	489	SC	1989	216	2	218	219
IN	3402	390	12	402	392	SD	280	40	2	42	40
KS	1201	123	3	126	130	TN	2692	322	4	326	330
KY	1246	135	6	141	136	TX	9669	1065	39	1104	1085
LA	1225	174	5	179	180	UT	1225	99	5	104	100
MA	2818	245	11	256	247	VA	4865	556	14	570	565
MD	2414	294	14	308	293	VT	397	32	3	35	32
ME	824	76	2	78	77	WA	4627	472	14	486	477
MI	5217	450	15	465	454	WI	2123	258	13	271	261
MN	2094	207	9	216	207	WV	620	62	0	62	65
MO	2362	244	11	255	248	WY	332	42	1	43	41
MS	736	88	4	92	92	XX	699	69	12	81	63

State	Total BSM	Rank	State	Total BSM	Rank
CA	1558	1	NH	174	27
TX	1085	2	CT	158	28
FL	809	3	OK	158	29
NY	685	4	OR	156	30
OH	647	5	NM	145	31
PA	599	6	KY	136	32
VA	565	7	KS	130	33
IL	489	8	IA	124	34
WA	477	9	AR	108	35
CO	459	10	UT	100	36
MI	454	11	MS	92	37
GA	408	12	NE	85	38
IN	392	13	ID	77	39
NC	381	14	ME	77	40
AZ	334	15	AK	67	41
TN	330	16	WV	65	42
NJ	310	17	MT	59	43
MD	293	18	HI	54	44
WI	261	19	DE	52	45
MO	248	20	WY	41	46
MA	247	21	SD	40	47
SC	219	22	DC	39	48
MN	207	23	ND	36	49
AL	205	24	RI	33	50
NV	181	25	VT	32	51
LA	180	26	XX	63	52
			Total:	14324	

TOTAL	ACTIVE	ACTIVE	TOTAL	TOTAL
"MEM"	"MEM"	"SUB"	"ACTIVE"	"BSM"
<b>TOTALS</b>	<b>138141</b>	<b>14187</b>	<b>501</b>	<b>14688</b>

DEFINITIONS: MEM = Member Signed Certificate

Total MEM = Total # Constituents Per State w-Member Signed Certificate

ACTIVE MEM = Current Dues Paying or Lifetime Donor w-Signed Certificate

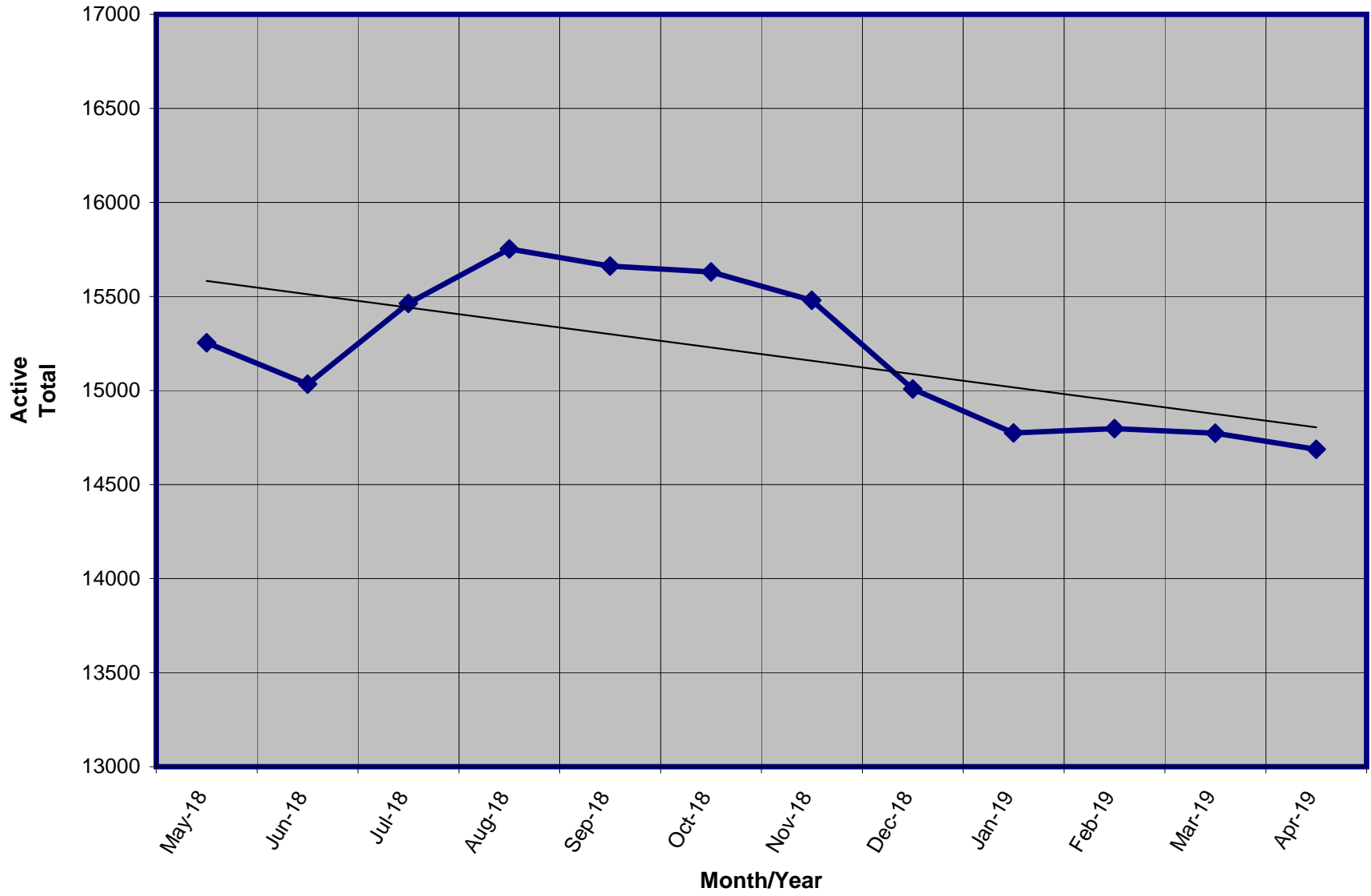
ACTIVE SUB (ACTIVE NON MEM) = Current Dues Paying or Lifetime Donors Who Have NOT Signed the Certificate (Formerly Called "Subscriber")

TOTAL ACTIVE = Current Dues Paying or Lifetime Donor

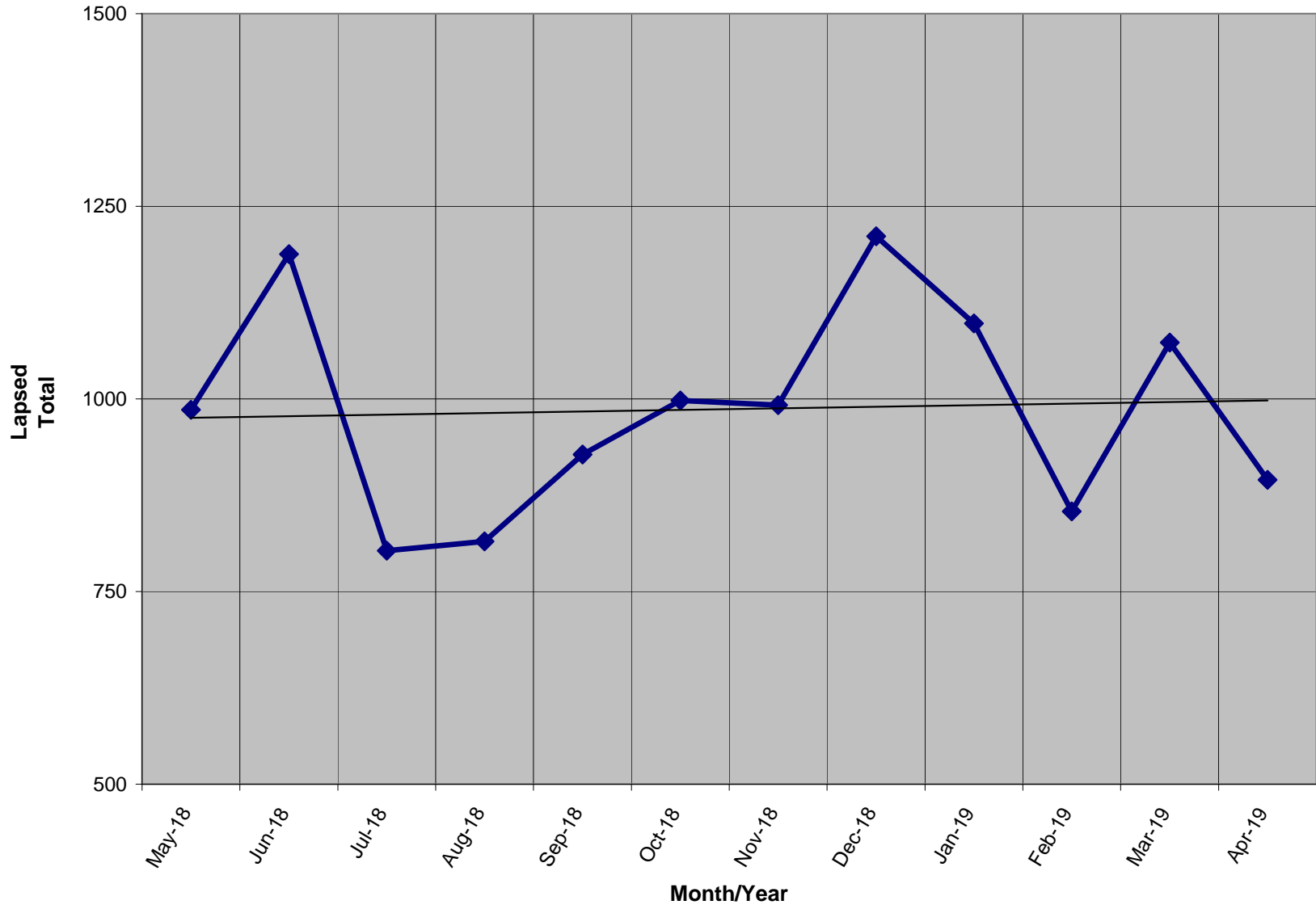
BSM = By Law Definition of "Sustaining Member" and number used for delegate count

(Art 5-3: "Sustaining member" is any Party member who has given at least \$25 to the Party in the prior twelve months, or who is a life member.)

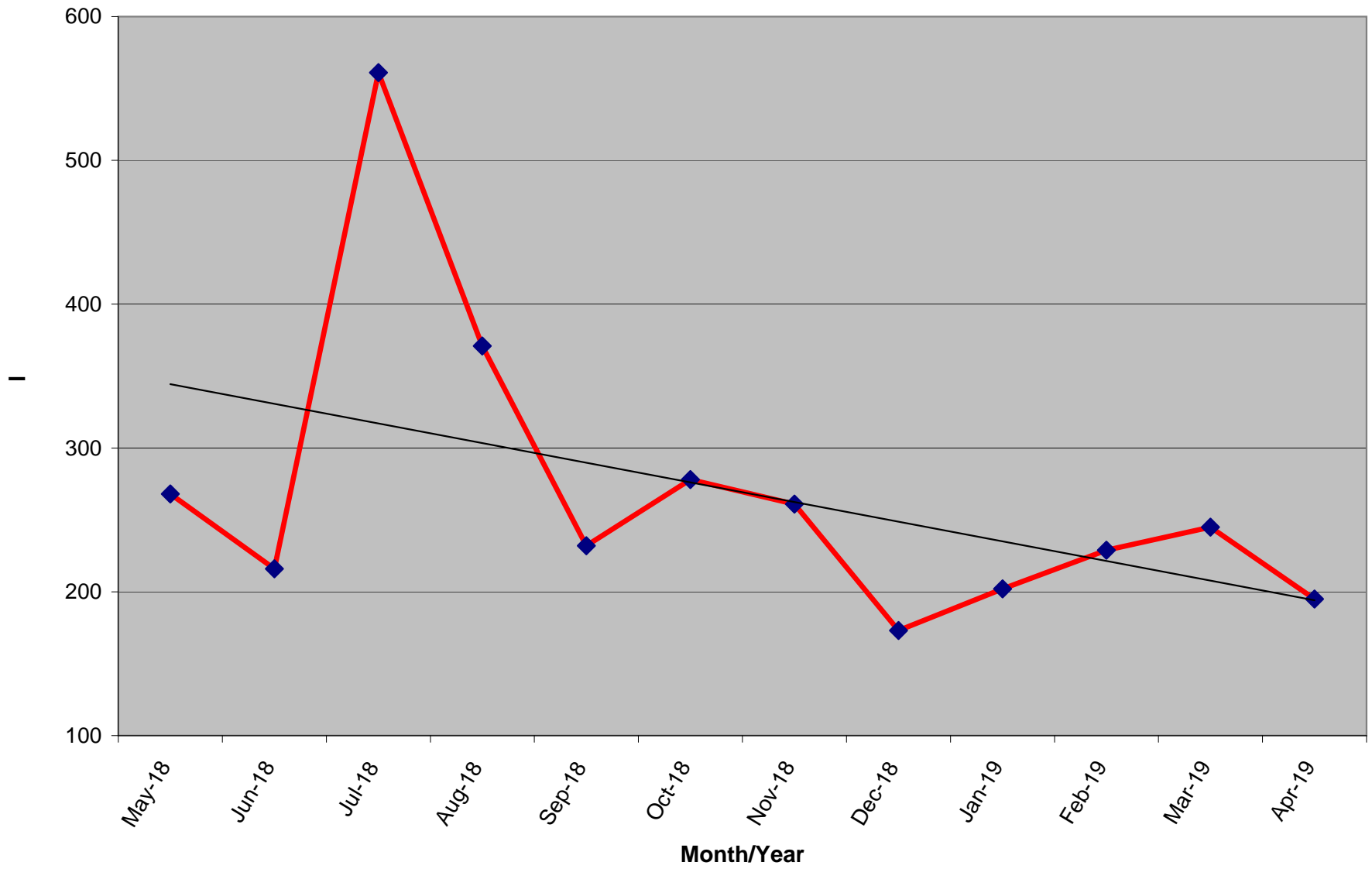
Active Donors - Past 12 Months



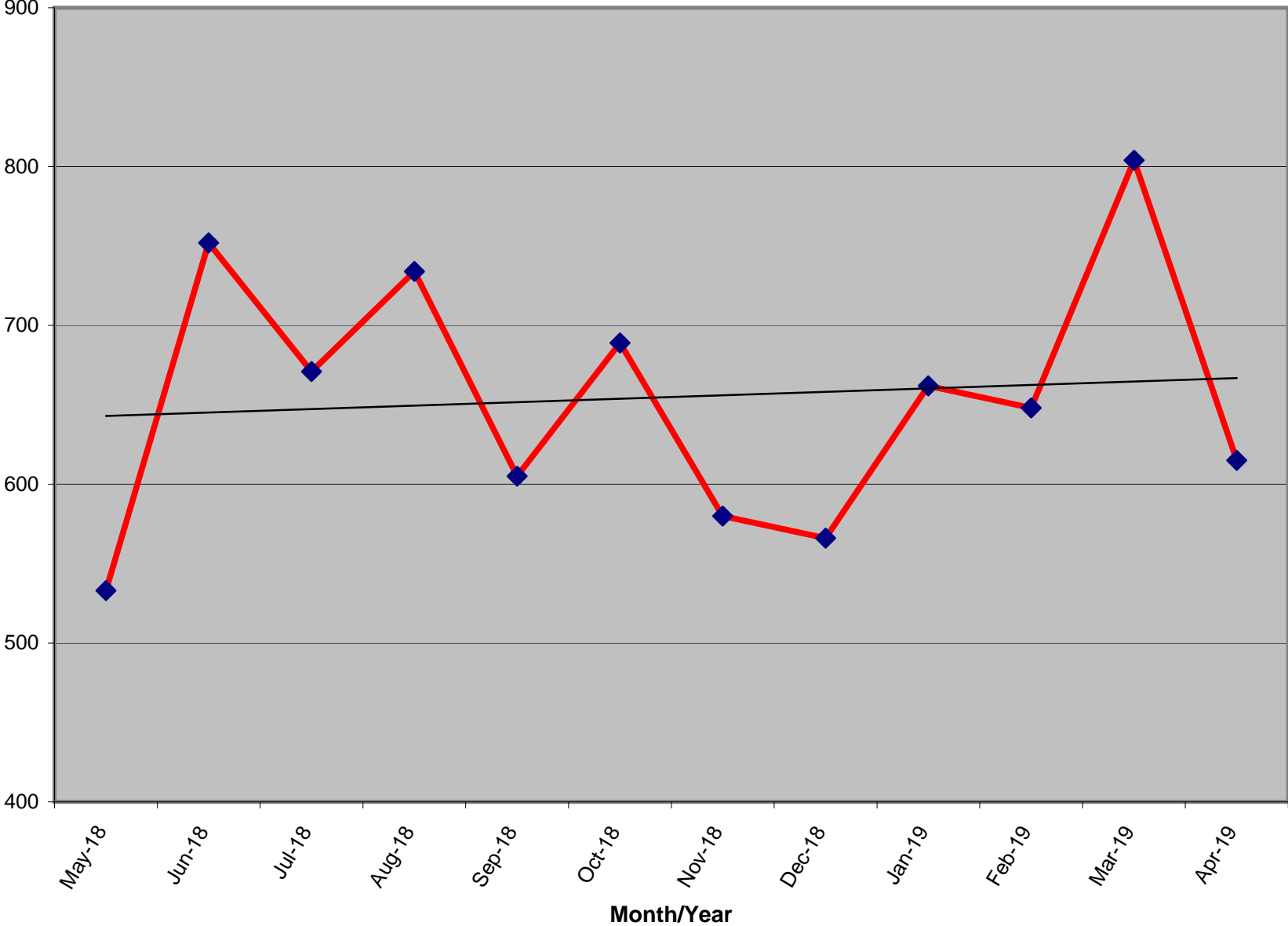
Lapsed - Dropped - Donors - Past 12 Months



**New Donors Past 12 Months**



Renew Donors - Past 12 Months



**% OF ACTIVE MEMBERS VS. REGISTERED LIBERTARIAN VOTERS BY STATE**

STATE	TI Reg Voters	Reg Lib	% Reg L to TI Reg	Total Active By State	Active to Registered
AK	520,646	7,593	1.46%	67	0.88%
AL	3,303,122	0	n/a	204	n/a
AR	1,744,141	348	0.02%	107	30.75%
AZ	3,662,382	31,554	0.86%	329	1.04%
CA	25,259,865	153,348	0.61%	1,550	1.01%
CO	3,219,953	36,911	1.15%	457	1.24%
CT	2,156,316	2,959	0.14%	155	5.24%
DC	473,526	1,025	0.22%	39	3.80%
DE	715,019	1,640	0.23%	54	3.29%
FL	13,694,743	31,682	0.23%	802	2.53%
GA	6,443,457	0	n/a	397	n/a
HI	716,458	0	n/a	54	n/a
IA	1,955,058	9,331	0.48%	125	1.34%
ID	801,151	6,482	0.81%	74	1.14%
IL	8,780,685	0	n/a	476	n/a
IN	4,355,147	0	n/a	390	n/a
KS	1,611,223	13,746	0.85%	123	0.89%
KY	3,346,095	8,250	0.25%	135	1.64%
LA	2,972,024	14,569	0.49%	174	1.19%
MA	4,574,967	15,787	0.35%	245	1.55%
MD	3,903,599	20,894	0.54%	294	1.41%
ME	1,028,602	5,554	0.54%	76	1.37%
MI	7,347,955	0	n/a	450	n/a
MN	3,268,360	0	n/a	207	n/a
MO	4,123,266	0	n/a	244	n/a
MS	2,044,713	0	n/a	88	n/a

*Registration totals provided by Richard Winger as of 03/19*

STATE	TI Reg Voters	Reg Lib	% Reg L to TI Reg	Total Active By State	Active to Registered
MT	695,971	0	n/a	58	n/a
NC	6,571,602	36,010	0.55%	379	1.05%
ND	429,978	0	n/a	35	n/a
NE	1,195,069	13,012	1.09%	84	0.65%
NH	961,819	162	0.02%	175	108.02%
NJ	5,778,406	8,874	0.15%	312	3.52%
NM	1,220,056	7,792	0.64%	142	1.82%
NV	1,468,671	14,322	0.98%	182	1.27%
NY	12,695,762	9,757	0.08%	686	7.03%
OH	7,914,320	0	n/a	644	n/a
OK	2,112,991	8,497	0.40%	160	1.88%
OR	2,652,935	18,962	0.71%	157	0.83%
PA	8,609,880	44,848	0.52%	592	1.32%
RI	772,360	0	n/a	32	n/a
SC	3,268,076	0	n/a	216	n/a
SD	550,529	1,893	0.34%	40	2.11%
TN	4,112,566	0	n/a	322	n/a
TX	14,748,880	0	n/a	1,065	n/a
UT	1,307,119	10,927	0.84%	99	0.91%
VA	5,473,173	0	n/a	556	n/a
VT	459,719	0	n/a	32	n/a
WA	4,646,246	0	n/a	472	n/a
WI	5,842,402	0	n/a	258	n/a
WV	1,228,123	5,616	0.46%	62	1.10%
WY	262,620	2,410	0.92%	42	1.74%
XX	356,791	0	n/a	69	n/a
<b>Totals</b>	<b>207,358,537</b>	<b>544,755</b>	<b>0.54%</b>	<b>14,187</b>	<b>2.60%</b>

**% OF ACTIVE MEMBERS VS. 2010 CENSUS POPULATION BY STATE**

STATE	2010 Census	TI Active By State	Active to Population
AK	710,231	67	0.0094%
AL	4,779,736	204	0.0043%
AR	2,915,918	107	0.0037%
AZ	6,392,017	329	0.0051%
CA	37,253,956	1,550	0.0042%
CO	5,029,196	457	0.0091%
CT	3,574,097	155	0.0043%
DC	601,723	39	0.0065%
DE	897,934	54	0.0060%
FL	18,801,310	802	0.0043%
GA	9,687,653	397	0.0041%
HI	1,360,301	54	0.0040%
IA	3,046,355	125	0.0041%
ID	1,567,582	74	0.0047%
IL	12,830,632	476	0.0037%
IN	6,483,802	390	0.0060%
KS	2,853,118	123	0.0043%
KY	4,339,367	135	0.0031%
LA	4,533,372	174	0.0038%
MA	6,547,629	245	0.0037%
MD	5,773,552	294	0.0051%
ME	1,328,361	76	0.0057%
MI	9,883,640	450	0.0046%
MN	5,303,925	207	0.0039%
MO	5,988,927	244	0.0041%
MS	2,967,297	88	0.0030%

**ACTIVE TO POPULATION BY RANK**

STATE	2010 Census	TI Active By State	Active to Population
MT	989,415	58	0.0059%
NC	9,535,483	379	0.0040%
ND	672,591	35	0.0052%
NE	1,826,341	84	0.0046%
NH	1,316,470	175	0.0133%
NJ	8,791,894	312	0.0035%
NM	2,059,179	142	0.0069%
NV	2,700,551	182	0.0067%
NY	19,378,102	686	0.0035%
OH	11,536,504	644	0.0056%
OK	3,751,351	160	0.0043%
OR	3,831,074	157	0.0041%
PA	12,702,379	592	0.0047%
RI	1,052,567	32	0.0030%
SC	4,625,364	216	0.0047%
SD	814,180	40	0.0049%
TN	6,346,105	322	0.0051%
TX	25,145,561	1,065	0.0042%
UT	2,763,885	99	0.0036%
VA	8,001,024	556	0.0069%
VT	625,741	32	0.0051%
WA	6,724,540	472	0.0070%
WI	5,686,986	258	0.0045%
WV	1,852,994	62	0.0033%
WY	563,626	42	0.0075%
Totals	308,745,538	14,118	0.0046%

STATE	Rank	TI Active By State	Active to Population
NH	1	175	0.0133%
AK	2	67	0.0094%
CO	3	457	0.0091%
WY	4	42	0.0075%
WA	5	472	0.0070%
VA	6	556	0.0069%
NM	7	142	0.0069%
NV	8	182	0.0067%
DC	9	39	0.0065%
IN	10	390	0.0060%
DE	11	54	0.0060%
MT	12	58	0.0059%
ME	13	76	0.0057%
OH	14	644	0.0056%
ND	15	35	0.0052%
AZ	16	329	0.0051%
VT	17	32	0.0051%
MD	18	294	0.0051%
TN	19	322	0.0051%
SD	20	40	0.0049%
ID	21	74	0.0047%
SC	22	216	0.0047%
PA	23	592	0.0047%
NE	24	84	0.0046%
MI	25	450	0.0046%
WI	26	258	0.0045%

STATE	Rank	TI Active By State	Active to Population
CT	27	155	0.0043%
KS	28	123	0.0043%
AL	29	204	0.0043%
FL	30	802	0.0043%
OK	31	160	0.0043%
TX	32	1,065	0.0042%
CA	33	1,550	0.0042%
IA	34	125	0.0041%
OR	35	157	0.0041%
GA	36	397	0.0041%
MO	37	244	0.0041%
NC	38	379	0.0040%
HI	39	54	0.0040%
MN	40	207	0.0039%
LA	41	174	0.0038%
MA	42	245	0.0037%
IL	43	476	0.0037%
AR	44	107	0.0037%
UT	45	99	0.0036%
NJ	46	312	0.0035%
NY	47	686	0.0035%
WV	48	62	0.0033%
KY	49	135	0.0031%
RI	50	32	0.0030%
MS	51	88	0.0030%
Totals		14,118	0.0046%

\* 2010 US Census Figures - does not include PR or other territories or out of US ("XX" states)