

# Libertarian National Committee - Membership Report

## "Donor" Totals - Sep-15

### 4 Year & 12 Month Comparison

	Dec-11	Dec-12	Dec-13	Dec-14	Sep-14	Oct-14	Nov-14	Dec-14	Jan-15	Feb-15	Mar-15	Apr-15	May-15	Jun-15	Jul-15	Aug-15	Sep-15
Active w-MEM	13468	13749	13670	12053	13734	13442	12947	12053	11902	11988	11845	11837	11663	11640	11649	11708	11715
Active w/out MEM	859	1194	967	747	990	944	930	747	662	672	652	651	560	546	536	527	522
<b>Total Active Donors</b>	<b>14327</b>	<b>14943</b>	<b>14637</b>	<b>12800</b>	<b>14724</b>	<b>14386</b>	<b>13877</b>	<b>12800</b>	<b>12564</b>	<b>12660</b>	<b>12497</b>	<b>12488</b>	<b>12223</b>	<b>12186</b>	<b>12185</b>	<b>12235</b>	<b>12237</b>
<b>Percent Change</b>	<b>-4.92%</b>	<b>4.30%</b>	<b>-2.05%</b>	<b>-12.55%</b>	<b>-2.82%</b>	<b>-2.30%</b>	<b>-3.54%</b>	<b>-7.76%</b>	<b>-1.84%</b>	<b>0.76%</b>	<b>-1.29%</b>	<b>-0.07%</b>	<b>-2.12%</b>	<b>-0.30%</b>	<b>-0.01%</b>	<b>0.41%</b>	<b>0.02%</b>
Lapsed/Drop MEM	1379	1381	1245	1733	945	1385	1235	1733	863	619	972	671	718	484	595	555	568
Lapse w/out MEM	74	76	82	203	75	98	52	203	138	32	53	25	101	33	27	30	28
<b>Lapsed/Drop Total</b>	<b>1453</b>	<b>1457</b>	<b>1327</b>	<b>1936</b>	<b>1020</b>	<b>1483</b>	<b>1287</b>	<b>1936</b>	<b>1001</b>	<b>651</b>	<b>1025</b>	<b>696</b>	<b>819</b>	<b>517</b>	<b>622</b>	<b>585</b>	<b>596</b>
<b>Percent Change</b>	<b>65.49%</b>	<b>0.28%</b>	<b>-8.92%</b>	<b>45.89%</b>	<b>52.69%</b>	<b>45.39%</b>	<b>-13.22%</b>	<b>50.43%</b>	<b>-48.30%</b>	<b>-34.97%</b>	<b>57.45%</b>	<b>-32.10%</b>	<b>17.67%</b>	<b>-36.87%</b>	<b>20.31%</b>	<b>-5.95%</b>	<b>1.88%</b>
New Donors w-MEM	256	240	267	110	94	235	208	110	126	111	141	104	70	110	107	137	103
New w/out MEM	26	38	168	6	17	10	2	6	8	11	5	2	4	3	5	10	12
<b>New Total</b>	<b>282</b>	<b>278</b>	<b>435</b>	<b>116</b>	<b>111</b>	<b>245</b>	<b>210</b>	<b>116</b>	<b>134</b>	<b>122</b>	<b>146</b>	<b>106</b>	<b>74</b>	<b>113</b>	<b>112</b>	<b>147</b>	<b>115</b>
<b>Percent Change</b>	<b>80.77%</b>	<b>-1.42%</b>	<b>56.47%</b>	<b>-73.33%</b>	<b>-35.09%</b>	<b>120.72%</b>	<b>-14.29%</b>	<b>-44.76%</b>	<b>15.52%</b>	<b>-8.96%</b>	<b>19.67%</b>	<b>-27.40%</b>	<b>-30.19%</b>	<b>52.70%</b>	<b>-0.88%</b>	<b>31.25%</b>	<b>-21.77%</b>
Renewed w-MEM	900	708	966	729	451	858	532	729	586	594	688	559	474	351	497	477	472
Renewed w/out MEM	61	57	55	14	30	42	36	14	45	31	28	22	6	16	12	11	11
<b>Total Renewals</b>	<b>961</b>	<b>765</b>	<b>1021</b>	<b>743</b>	<b>481</b>	<b>900</b>	<b>568</b>	<b>743</b>	<b>631</b>	<b>625</b>	<b>716</b>	<b>581</b>	<b>480</b>	<b>367</b>	<b>509</b>	<b>488</b>	<b>483</b>
<b>Percent Change</b>	<b>-3.13%</b>	<b>-20.40%</b>	<b>33.46%</b>	<b>-27.23%</b>	<b>31.42%</b>	<b>87.11%</b>	<b>-36.89%</b>	<b>30.81%</b>	<b>-15.07%</b>	<b>-0.95%</b>	<b>14.56%</b>	<b>-18.85%</b>	<b>-17.38%</b>	<b>-23.54%</b>	<b>38.69%</b>	<b>-4.13%</b>	<b>-1.02%</b>
<b>Total "MEM"</b>	<b>121850</b>	<b>126900</b>	<b>130507</b>	<b>133400</b>	<b>132736</b>	<b>133118</b>	<b>133314</b>	<b>133400</b>	<b>133568</b>	<b>133983</b>	<b>134147</b>	<b>134278</b>	<b>134338</b>	<b>134470</b>	<b>134618</b>	<b>134779</b>	<b>134870</b>
<b>Percent Change</b>	<b>1.77%</b>	<b>4.14%</b>	<b>2.84%</b>	<b>2.22%</b>	<b>0.09%</b>	<b>0.29%</b>	<b>0.15%</b>	<b>0.06%</b>	<b>0.13%</b>	<b>0.31%</b>	<b>0.12%</b>	<b>0.10%</b>	<b>0.04%</b>	<b>0.10%</b>	<b>0.11%</b>	<b>0.12%</b>	<b>0.07%</b>
<b>Total "LIFETIME"</b>	<b>2142</b>	<b>2208</b>	<b>2295</b>	<b>2446</b>	<b>2445</b>	<b>2445</b>	<b>2445</b>	<b>2446</b>	<b>2447</b>	<b>2447</b>	<b>2451</b>	<b>2455</b>	<b>2455</b>	<b>2455</b>	<b>2455</b>	<b>2456</b>	<b>2456</b>
<b>Total "BSM"</b>	<b>13589</b>	<b>13824</b>	<b>13869</b>	<b>12526</b>	<b>13533</b>	<b>13437</b>	<b>12778</b>	<b>12526</b>	<b>12294</b>	<b>12260</b>	<b>12122</b>	<b>12040</b>	<b>11722</b>	<b>11723</b>	<b>11625</b>	<b>11612</b>	<b>11593</b>

### Last Year vs. This Year

	Sep-14	Sep-15	Change	12 Mo Ave		
Active w-MEM	13734	11715	-14.70%	12032	<u>Active Donors w-MEM =</u>	11715
Active w/out MEM	990	522	-47.27%	662	<u>Lapsed &amp; Zero Dues MEM =</u>	123155
<b>Total Active Donors</b>	<b>14724</b>	<b>12237</b>	<b>-16.89%</b>	<b>12695</b>	<u>Total "MEM" w-Signed Certificate =</u>	<u>134870</u>
Lapsed/Dropped	1020	596	<b>-41.57%</b>	935	<u>Member Signed Certificate =</u>	<u>"MEM"</u>
New Donors	111	115	<b>3.60%</b>	137	<u>Total "BSM" =</u>	<u>11593</u>
Renewals	481	483	<b>0.42%</b>	591	<u>Bylaws Defined Sustaining Member =</u>	<u>"BSM"</u>

**Sep-15 MEMBERSHIP BY STATE --- ACTIVE AND NON ACTIVE**

<u>STATE</u>	<u>TOTAL "MEM"</u>	<u>ACTIVE "MEM"</u>	<u>ACTIVE "SUB"</u>	<u>TOTAL "ACTIVE"</u>	<u>TOTAL "BSM"</u>
AK	668	54	1	55	55
AL	1734	159	3	162	158
AR	897	77	3	80	77
AZ	3183	286	14	300	280
CA	19335	1577	78	1655	1565
CO	3703	380	14	394	379
CT	1479	135	9	144	133
DC	372	26	3	29	25
DE	384	32	2	34	30
FL	7976	676	35	711	672
GA	5900	335	11	346	328
HI	528	55	2	57	54
IA	1023	115	3	118	115
ID	760	55	1	56	57
IL	4486	397	24	421	386
IN	3186	339	13	352	333
KS	1231	130	2	132	130
KY	1183	112	4	116	110
LA	1087	126	4	130	124
MA	2824	188	11	199	187
MD	2450	239	13	252	235
ME	806	58	1	59	59
MI	5181	374	10	384	365
MN	2027	155	7	162	153
MO	2358	216	12	228	217
MS	713	82	2	84	81

<u>STATE</u>	<u>TOTAL "MEM"</u>	<u>ACTIVE "MEM"</u>	<u>ACTIVE "SUB"</u>	<u>TOTAL "ACTIVE"</u>	<u>TOTAL "BSM"</u>
MT	510	45	2	47	43
NC	3358	299	10	309	296
ND	223	35	1	36	35
NE	661	72	2	74	68
NH	1355	120	7	127	118
NJ	3077	267	14	281	267
NM	1118	92	10	102	92
NV	1913	164	6	170	161
NY	4988	516	28	544	518
OH	5207	532	16	548	521
OK	1035	88	5	93	88
OR	2203	148	12	160	145
PA	5918	468	22	490	468
RI	313	28	1	29	27
SC	1726	143	5	148	144
SD	258	34	0	34	34
TN	2390	201	3	204	201
TX	9039	837	38	875	826
UT	1150	82	5	87	79
VA	4712	508	16	524	497
VT	396	25	2	27	22
WA	4328	321	17	338	320
WI	1945	181	7	188	182
WV	607	46	1	47	48
WY	313	23	0	23	24
XX	653	62	10	72	61

	<u>TOTAL "MEM"</u>	<u>ACTIVE "MEM"</u>	<u>ACTIVE "SUB"</u>	<u>TOTAL "ACTIVE"</u>	<u>TOTAL "BSM"</u>
<b>TOTALS</b>	<b>134870</b>	<b>11715</b>	<b>522</b>	<b>12237</b>	<b>11593</b>

**DEFINITIONS: MEM = Member Signed Certificate**

**Total MEM = Total # Constituents Per State w-Member Signed Certificate**

**ACTIVE MEM = Current Dues Paying or Lifetime Donor w-Signed Certificate**

**ACTIVE SUB (ACTIVE NON MEM) = Current Dues Paying or Lifetime Donors Who Have NOT Signed the Certificate (Formerly Called "Subscriber")**

**TOTAL ACTIVE = Current Dues Paying or Lifetime Donor**

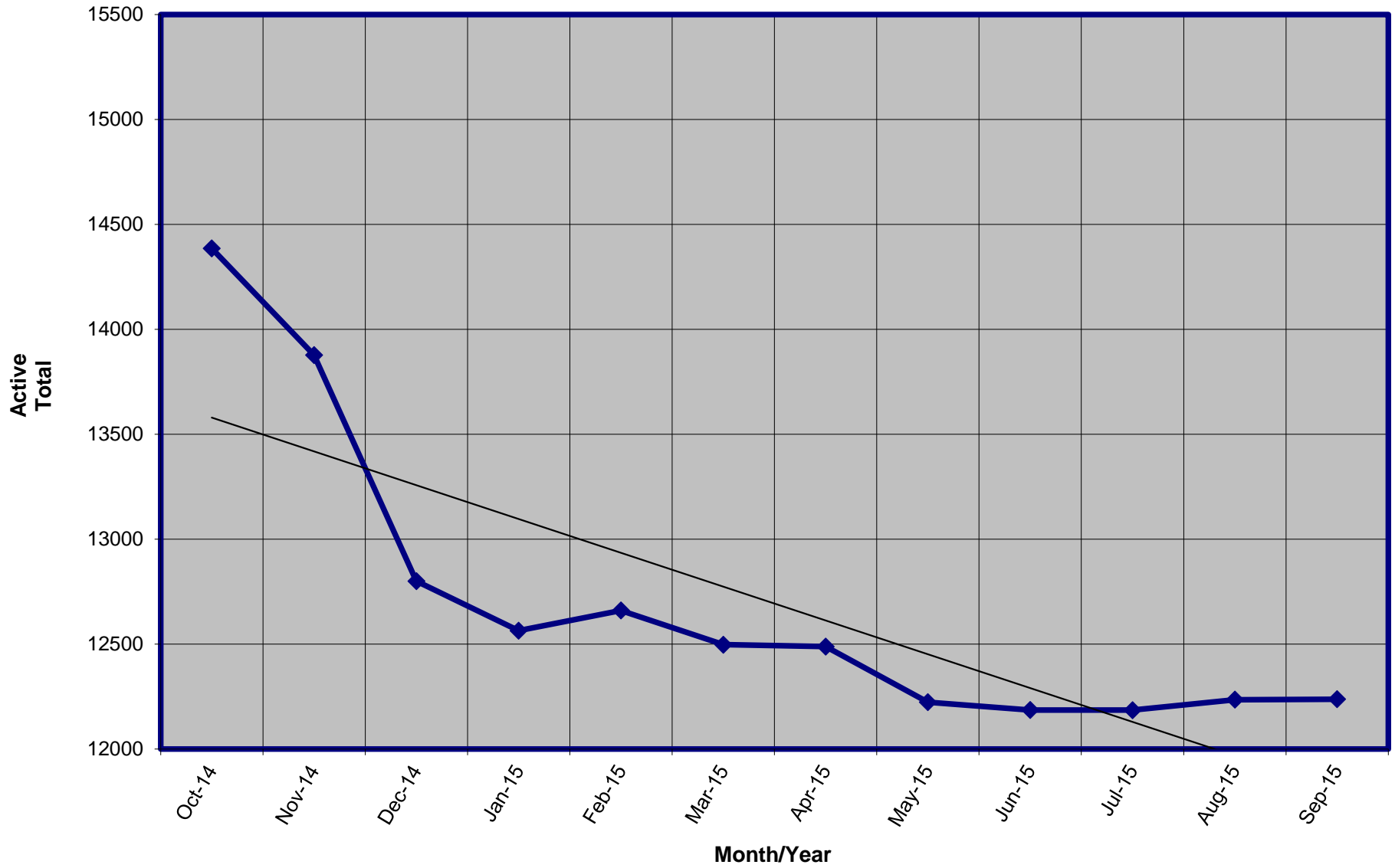
**BSM = By Law Definition of "Sustaining Member" and number used for delegate count**

**(Art 5-3: "Sustaining member" is any Party member who has given at least \$25 to the Party in the prior twelve months, or who is a life member.)**

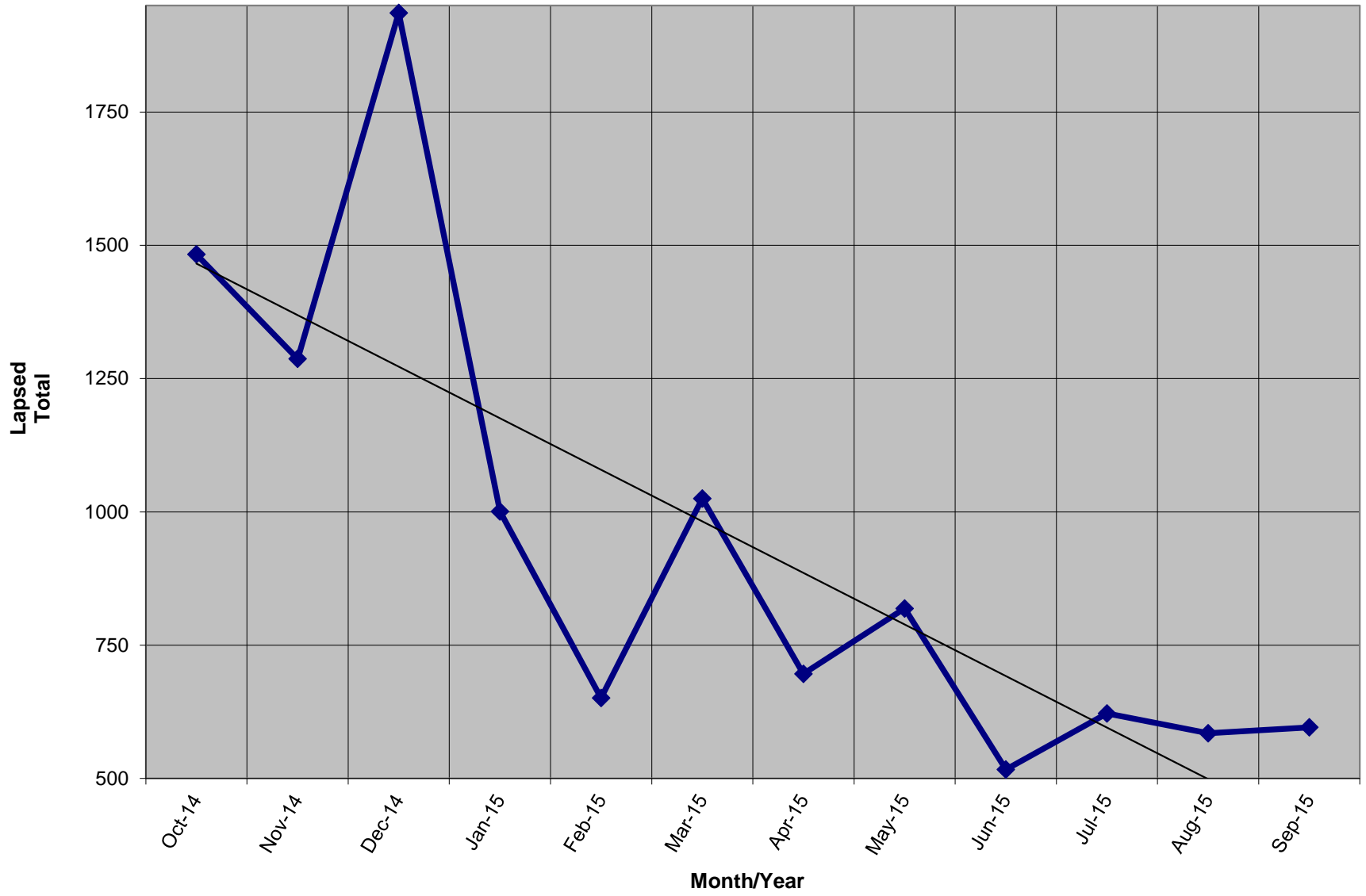
**SUSTAINING MEMBERSHIP STATE RANKINGS - "BSM"**

<u>State</u>	<u>Total BSM</u>	<u>Rank</u>	<u>State</u>	<u>Total BSM</u>	<u>Rank</u>
CA	1565	1	CT	133	27
TX	826	2	KS	130	28
FL	672	3	LA	124	29
OH	521	4	NH	118	30
NY	518	5	IA	115	31
VA	497	6	KY	110	32
PA	468	7	NM	92	33
IL	386	8	OK	88	34
CO	379	9	MS	81	35
MI	365	10	UT	79	36
IN	333	11	AR	77	37
GA	328	12	NE	68	38
WA	320	13	ME	59	39
NC	296	14	ID	57	40
AZ	280	15	AK	55	41
NJ	267	16	HI	54	42
MD	235	17	WV	48	43
MO	217	18	MT	43	44
TN	201	19	ND	35	45
MA	187	20	SD	34	46
WI	182	21	DE	30	47
NV	161	22	RI	27	48
AL	158	23	DC	25	49
MN	153	24	WY	24	50
OR	145	25	VT	22	51
SC	144	26	XX	61	52

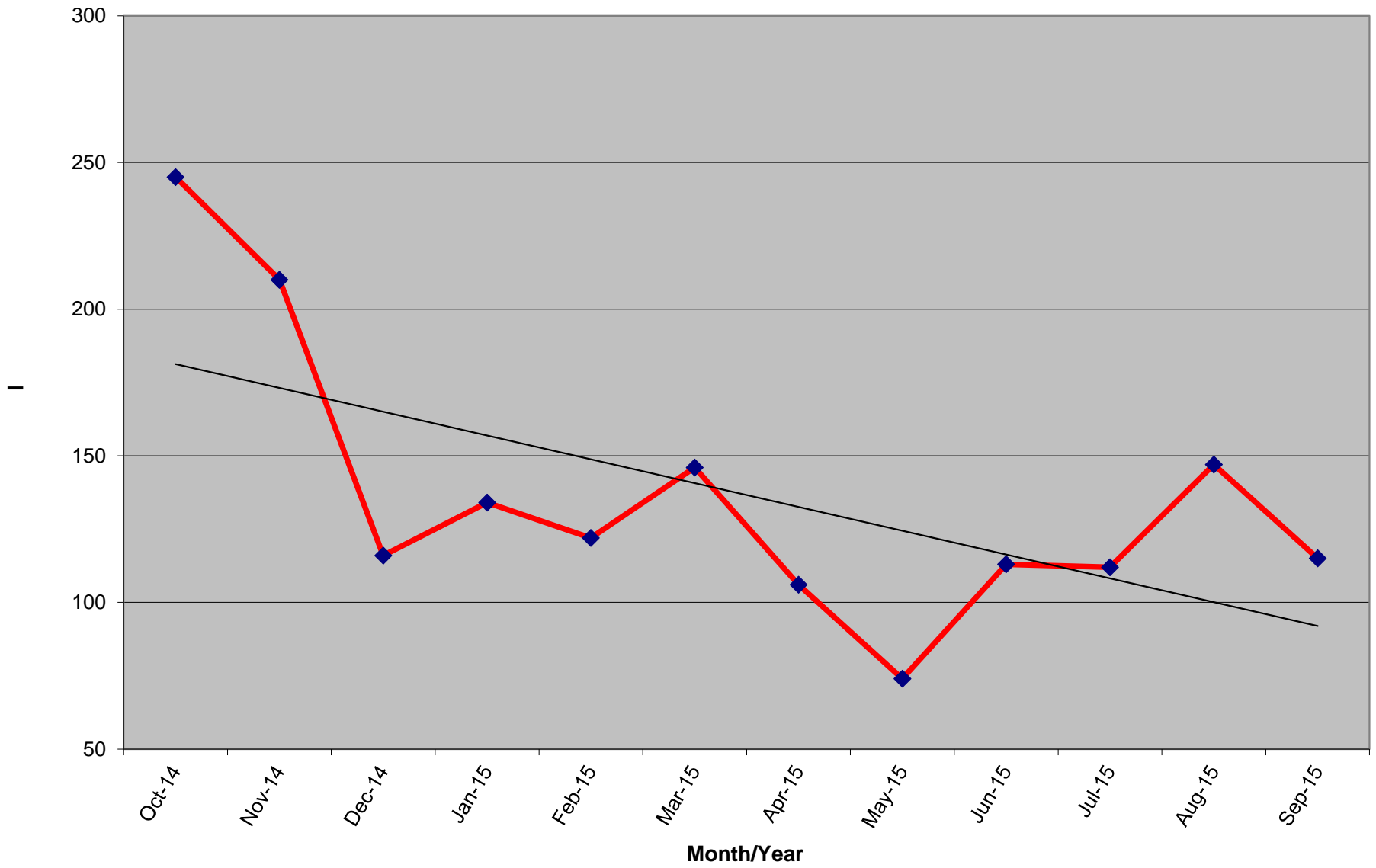
Active Donors - Past 12 Months



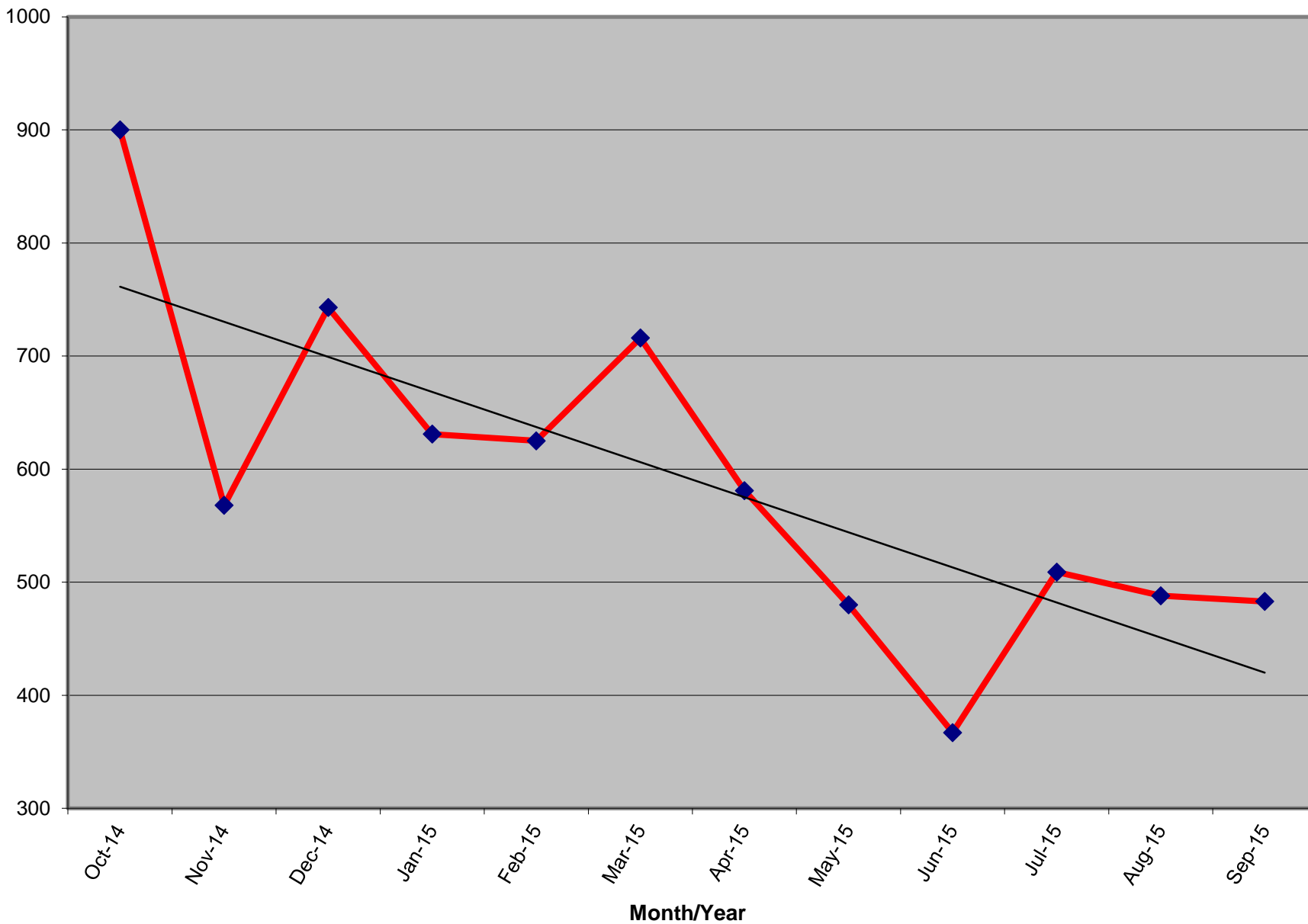
Lapsed - Dropped - Donors - Past 12 Months



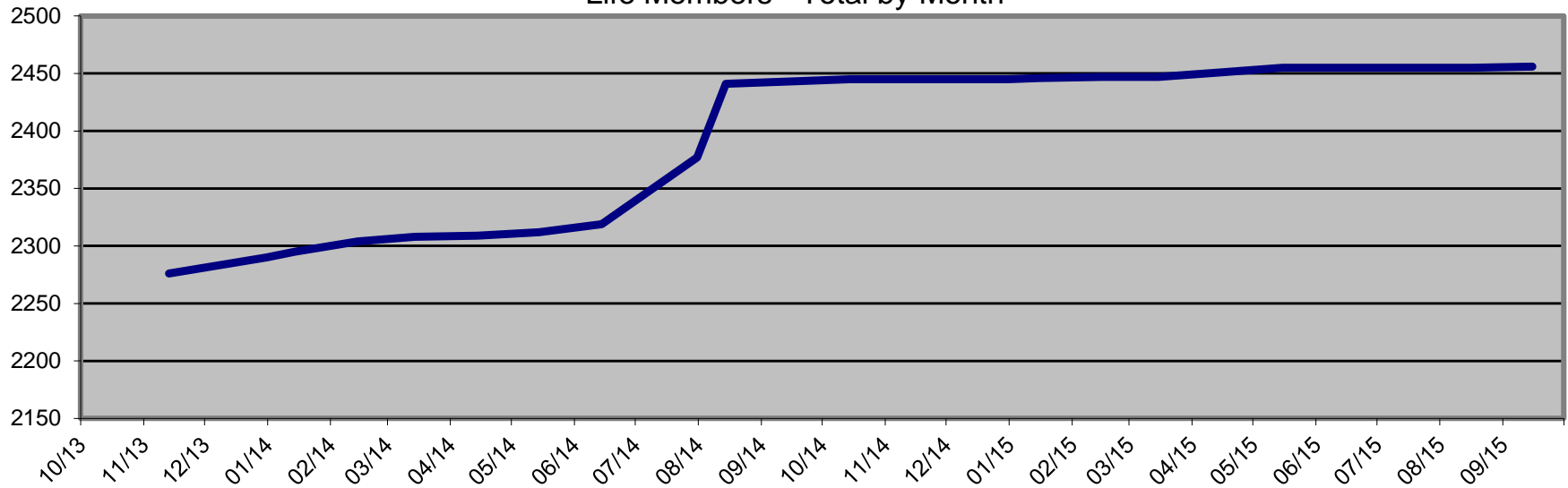
**New Donors Past 12 Months**



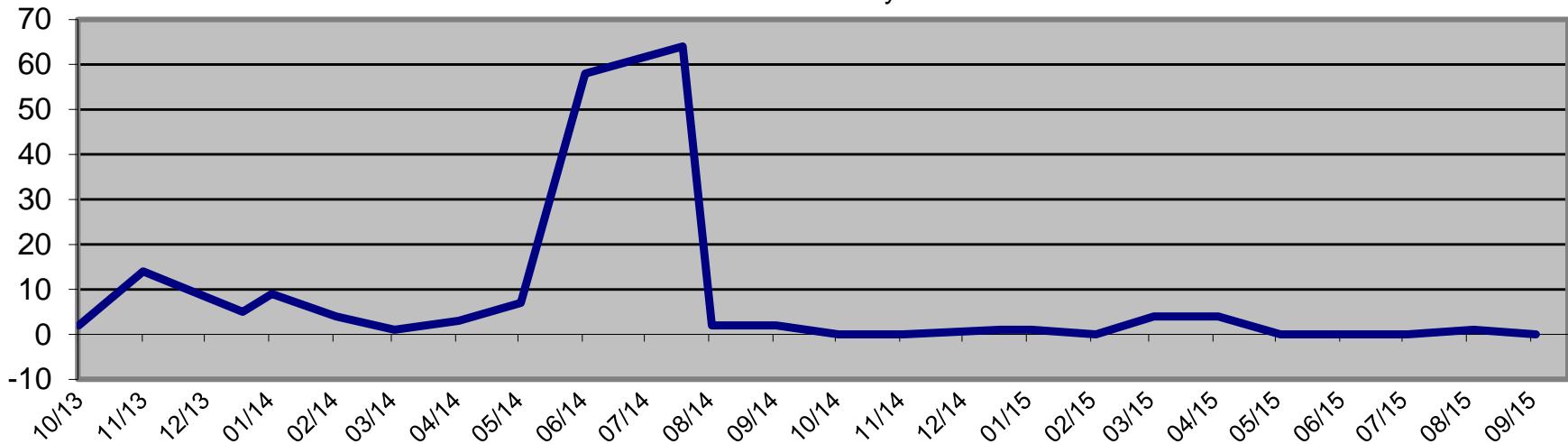
**Renew Donors - Past 12 Months**



Life Members - Total by Month



Life Members Increase by Month



Ave # of Life Members Increase Per Month Last 24 Months = 2.7 / Since Aug-14 = 1.1 Per Month \*

\* Doesn't include June/July-14 due to Life Member push prior to increase from \$1000 to \$1500 for a Life Membership

Note for 12 months prior to June/July-14 Ave # Increase = 4.58 Per Month