

**Libertarian National Committee - Membership Report**

**"Donor" Totals - Mar-18**

**4 Year & 12 Month Comparison**

	Dec-14	Dec-15	Dec-16	Dec-17	Mar-17	Apr-17	May-17	Jun-17	Jul-17	Aug-17	Sep-17	Oct-17	Nov-17	Dec-17	Jan-18	Feb-18	Mar-18
Active w-MEM	12053	11184	18592	14445	18334	17843	16652	16065	15110	14321	14411	14319	14422	14445	14506	14622	14821
Active w/out MEM	747	509	1814	553	1862	1829	1655	1424	1185	710	581	550	557	553	551	534	533
<b>Total Active Donors</b>	<b>12800</b>	<b>11693</b>	<b>20406</b>	<b>14998</b>	<b>20196</b>	<b>19672</b>	<b>18307</b>	<b>17489</b>	<b>16295</b>	<b>15031</b>	<b>14992</b>	<b>14869</b>	<b>14979</b>	<b>14998</b>	<b>15057</b>	<b>15156</b>	<b>15354</b>
<b>Percent Change</b>					<b>-1.74%</b>	<b>-2.59%</b>	<b>-6.94%</b>	<b>-4.47%</b>	<b>-6.83%</b>	<b>-7.76%</b>	<b>-0.26%</b>	<b>-0.82%</b>	<b>0.74%</b>	<b>0.13%</b>	<b>0.39%</b>	<b>0.66%</b>	<b>1.31%</b>
Lapsed/Drop MEM	1733	909	1016	1072	1533	1314	1995	1844	1626	1659	886	1122	837	1072	948	759	965
Lapse w/out MEM	203	30	27	23	32	50	206	270	254	499	166	64	24	23	20	25	37
<b>Lapsed/Drop Total</b>	<b>1936</b>	<b>939</b>	<b>1043</b>	<b>1095</b>	<b>1565</b>	<b>1364</b>	<b>2201</b>	<b>2114</b>	<b>1880</b>	<b>2158</b>	<b>1052</b>	<b>1186</b>	<b>861</b>	<b>1095</b>	<b>968</b>	<b>784</b>	<b>1002</b>
<b>Percent Change</b>					<b>80.92%</b>	<b>-12.84%</b>	<b>61.36%</b>	<b>-3.95%</b>	<b>-11.07%</b>	<b>14.79%</b>	<b>-51.25%</b>	<b>12.74%</b>	<b>-27.40%</b>	<b>27.18%</b>	<b>-11.60%</b>	<b>-19.01%</b>	<b>27.81%</b>
New Donors w-MEM	110	103	321	444	386	262	307	428	354	289	297	313	322	444	331	245	329
New w/out MEM	6	6	11	15	47	14	27	21	7	10	14	13	18	15	12	7	22
<b>New Total</b>	<b>116</b>	<b>109</b>	<b>332</b>	<b>459</b>	<b>433</b>	<b>276</b>	<b>334</b>	<b>449</b>	<b>361</b>	<b>299</b>	<b>311</b>	<b>326</b>	<b>340</b>	<b>459</b>	<b>343</b>	<b>252</b>	<b>351</b>
<b>Percent Change</b>					<b>38.78%</b>	<b>-36.26%</b>	<b>21.01%</b>	<b>34.43%</b>	<b>-19.60%</b>	<b>-17.17%</b>	<b>4.01%</b>	<b>4.82%</b>	<b>4.29%</b>	<b>35.00%</b>	<b>-25.27%</b>	<b>-26.53%</b>	<b>39.29%</b>
Renewed w-MEM	729	792	723	651	766	561	497	829	317	581	679	717	618	651	678	630	835
Renewed w/out MEM	14	20	8	4	9	3	5	18	8	14	23	20	13	4	6	1	14
<b>Total Renewals</b>	<b>743</b>	<b>812</b>	<b>731</b>	<b>655</b>	<b>775</b>	<b>564</b>	<b>502</b>	<b>847</b>	<b>325</b>	<b>595</b>	<b>702</b>	<b>737</b>	<b>631</b>	<b>655</b>	<b>684</b>	<b>631</b>	<b>849</b>
<b>Percent Change</b>					<b>97.70%</b>	<b>-27.23%</b>	<b>-10.99%</b>	<b>68.73%</b>	<b>-61.63%</b>	<b>83.08%</b>	<b>17.98%</b>	<b>4.99%</b>	<b>-14.38%</b>	<b>3.80%</b>	<b>4.43%</b>	<b>-7.75%</b>	<b>34.55%</b>
<b>Total "MEM" *</b>	<b>133400</b>	<b>135197</b>	<b>145814</b>	<b>138815</b>	<b>147222</b>	<b>136069</b>	<b>136362</b>	<b>136819</b>	<b>137174</b>	<b>137451</b>	<b>137779</b>	<b>138083</b>	<b>138363</b>	<b>138815</b>	<b>134464</b>	<b>134697</b>	<b>135008</b>
<b>Percent Change</b>					<b>0.24%</b>	<b>-7.58%</b>	<b>0.22%</b>	<b>0.34%</b>	<b>0.26%</b>	<b>0.20%</b>	<b>0.24%</b>	<b>0.22%</b>	<b>0.20%</b>	<b>0.53%</b>	<b>-3.13%</b>	<b>0.17%</b>	<b>0.23%</b>
<b>Total "LIFETIME" *</b>	<b>2446</b>	<b>2458</b>	<b>2571</b>	<b>2618</b>	<b>2580</b>	<b>2588</b>	<b>2596</b>	<b>2596</b>	<b>2603</b>	<b>2605</b>	<b>2610</b>	<b>2614</b>	<b>2614</b>	<b>2618</b>	<b>2567</b>	<b>2569</b>	<b>2574</b>
<b>Total "BSM"</b>	<b>12526</b>	<b>11045</b>	<b>19003</b>	<b>14668</b>	<b>18864</b>	<b>18399</b>	<b>17301</b>	<b>16622</b>	<b>15706</b>	<b>14700</b>	<b>14504</b>	<b>14426</b>	<b>14423</b>	<b>14668</b>	<b>14646</b>	<b>14702</b>	<b>14798</b>

\* Note: 01/18 Drop in Total Mem & TLifetime is result of PNCOA & Death Record append of 160k national records resulting in about 6k newly identified deceased effecting 80+ "active" record.

**Last Year vs. This Year**

	Mar-17	Mar-18	Change	12 Mo Ave		
Active w-MEM	18334	14821	-19.16%	15128	<u>Active Donors w-MEM =</u>	14821
Active w/out MEM	1862	533	-71.37%	889	<u>Lapsed &amp; Zero Dues MEM =</u>	120187
<b>Total Active Donors</b>	<b>20196</b>	<b>15354</b>	<b>-23.98%</b>	<b>16017</b>	<u>Total "MEM" w-Signed Certificate =</u>	135008
Lapsed/Dropped	1565	1002	-35.97%	1389	<u>Member Signed Certificate =</u>	"MEM"
New Donors	433	351	-18.94%	342	<u>Total "BSM" =</u>	14798
Renewals	775	849	9.55%	644	<u>Bylaws Defined Sustaining Member =</u>	"BSM"

Mar-18 MEMBERSHIP BY STATE --- ACTIVE AND NON ACTIVE

SUSTAINING MEMBERSHIP STATE RANKINGS - "BSM"

STATE	TOTAL "MEM"	ACTIVE "MEM"	ACTIVE "SUB"	TOTAL "ACTIVE"	TOTAL "BSM"	STATE	TOTAL "MEM"	ACTIVE "MEM"	ACTIVE "SUB"	TOTAL "ACTIVE"	TOTAL "BSM"
AK	673	93	1	94	92	MT	564	79	2	81	78
AL	1765	207	9	216	206	NC	3412	398	15	413	397
AR	892	104	2	106	103	ND	238	38	2	40	35
AZ	3166	333	15	348	325	NE	654	96	1	97	93
CA	18614	1598	72	1670	1591	NH	1401	171	4	175	173
CO	3790	473	10	483	469	NJ	2983	306	8	314	308
CT	1456	169	7	176	169	NM	1168	140	2	142	142
DC	379	39	1	40	39	NV	1867	176	9	185	176
DE	396	49	1	50	48	NY	4940	675	30	705	669
FL	8152	815	41	856	816	OH	4937	588	17	605	587
GA	5774	451	7	458	454	OK	1071	161	1	162	163
HI	526	52	4	56	54	OR	2195	167	17	184	167
IA	1057	140	2	142	141	PA	5819	612	15	627	608
ID	779	71	1	72	72	RI	303	29	0	29	29
IL	4377	514	18	532	515	SC	1926	242	3	245	241
IN	3325	406	15	421	407	SD	274	44	2	46	44
KS	1173	130	3	133	132	TN	2612	367	6	373	367
KY	1199	139	9	148	139	TX	9343	1099	39	1138	1102
LA	1192	230	5	235	232	UT	1194	98	6	104	100
MA	2763	250	13	263	250	VA	4779	632	18	650	636
MD	2353	285	15	300	288	VT	396	34	3	37	34
ME	796	79	5	84	80	WA	4523	511	21	532	507
MI	5104	526	10	536	515	WI	2060	274	12	286	274
MN	2040	211	4	215	214	WV	594	60	0	60	60
MO	2290	253	13	266	254	WY	321	37	1	38	37
MS	716	99	5	104	100	XX	687	71	11	82	66

State	Total BSM	Rank	State	Total BSM	Rank
CA	1591	1	NH	173	27
TX	1102	2	CT	169	28
FL	816	3	OR	167	29
NY	669	4	OK	163	30
VA	636	5	NM	142	31
PA	608	6	IA	141	32
OH	587	7	KY	139	33
IL	515	8	KS	132	34
MI	515	9	AR	103	35
WA	507	10	MS	100	36
CO	469	11	UT	100	37
GA	454	12	NE	93	38
IN	407	13	AK	92	39
NC	397	14	ME	80	40
TN	367	15	MT	78	41
AZ	325	16	ID	72	42
NJ	308	17	WV	60	43
MD	288	18	HI	54	44
WI	274	19	DE	48	45
MO	254	20	SD	44	46
MA	250	21	DC	39	47
SC	241	22	WY	37	48
LA	232	23	ND	35	49
MN	214	24	VT	34	50
AL	206	25	RI	29	51
NV	176	26	XX	66	52
			Total:	14798	
<b>TOTAL</b>	<b>135008</b>	<b>14821</b>	<b>ACTIVE</b>	<b>15354</b>	<b>TOTAL</b>
<b>"MEM"</b>		<b>"MEM"</b>	<b>"SUB"</b>	<b>"ACTIVE"</b>	<b>"BSM"</b>
<b>TOTALS</b>	<b>135008</b>	<b>14821</b>	<b>533</b>	<b>15354</b>	<b>14798</b>

DEFINITIONS: MEM = Member Signed Certificate

Total MEM = Total # Constituents Per State w-Member Signed Certificate

ACTIVE MEM = Current Dues Paying or Lifetime Donor w-Signed Certificate

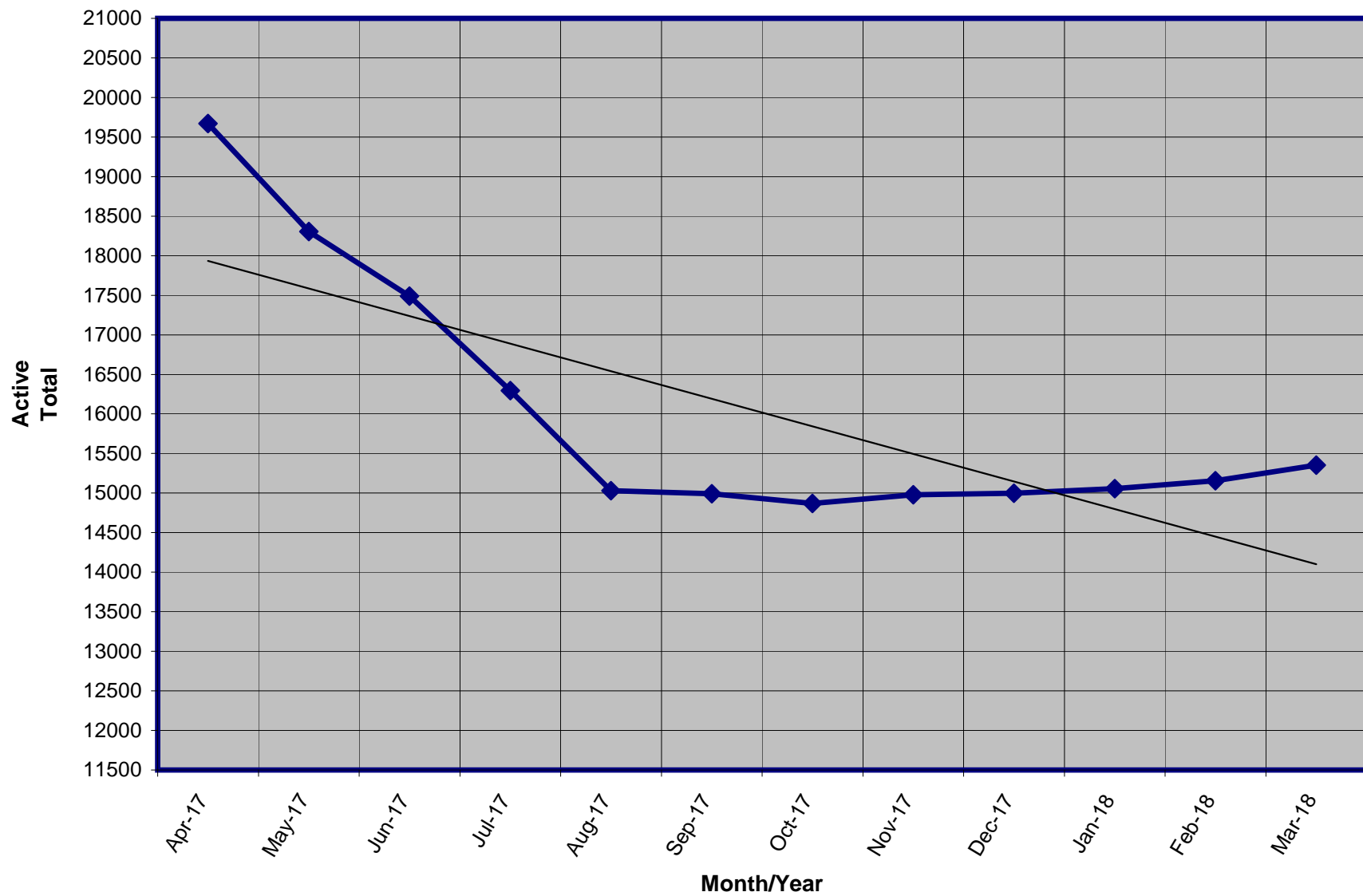
ACTIVE SUB (ACTIVE NON MEM) = Current Dues Paying or Lifetime Donors Who Have NOT Signed the Certificate (Formerly Called "Subscriber")

TOTAL ACTIVE = Current Dues Paying or Lifetime Donor

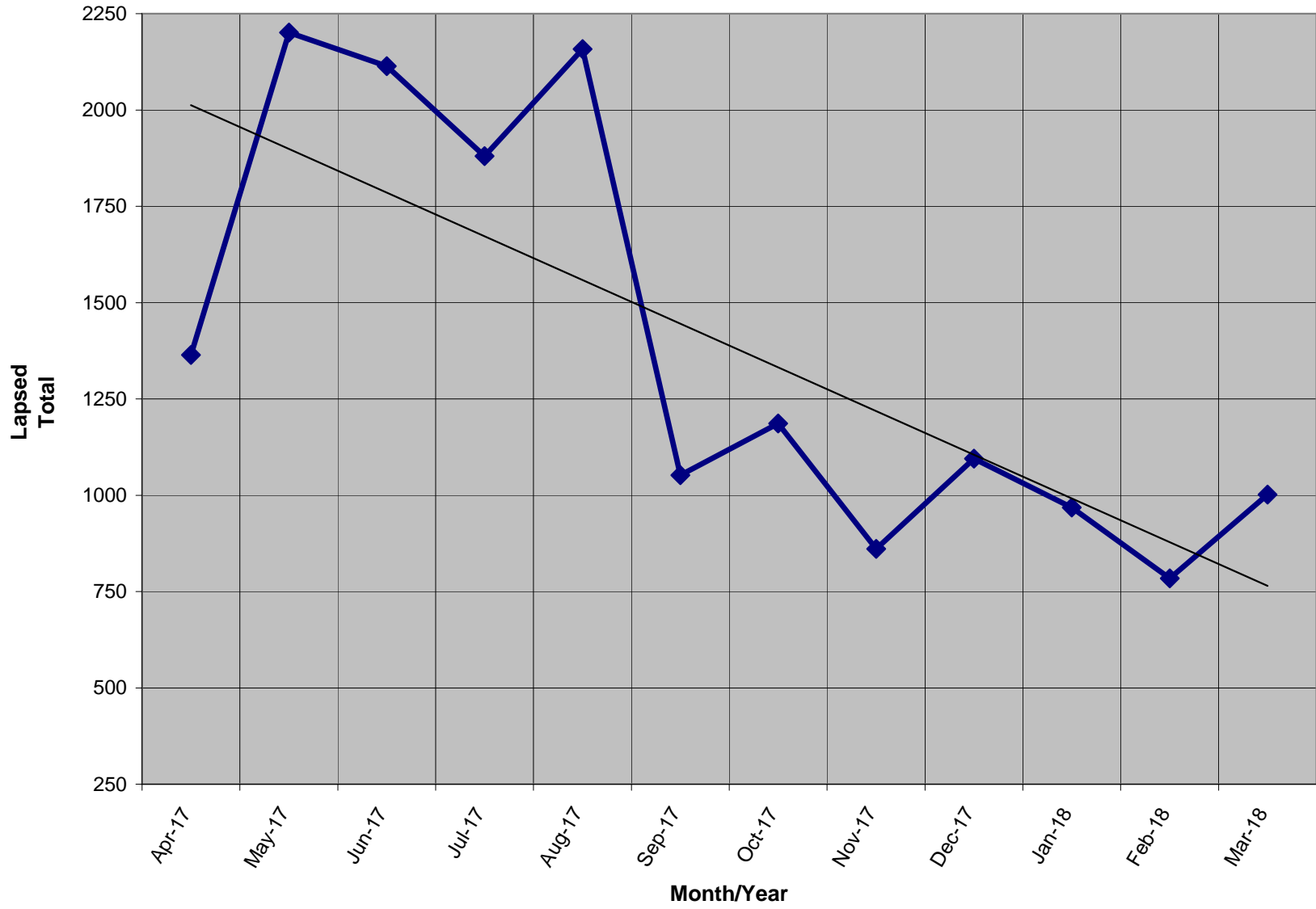
BSM = By Law Definition of "Sustaining Member" and number used for delegate count

(Art 5-3: "Sustaining member" is any Party member who has given at least \$25 to the Party in the prior twelve months, or who is a life member.)

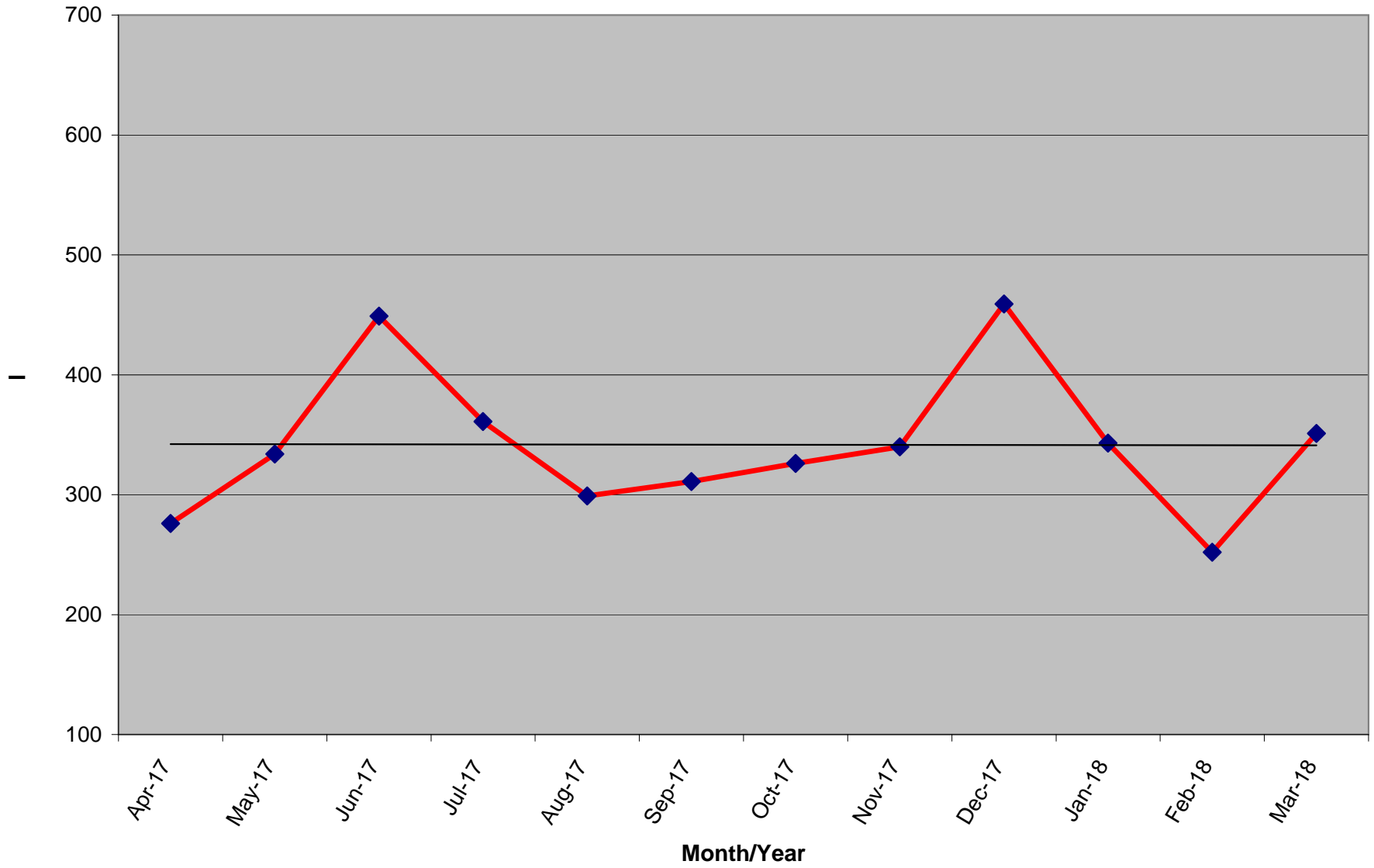
Active Donors - Past 12 Months



Lapsed - Dropped - Donors - Past 12 Months



**New Donors Past 12 Months**



Renew Donors - Past 12 Months

