

Libertarian National Committee - Membership Report

"Donor" Totals - Sep-18

4 Year & 12 Month Comparison

	Dec-14	Dec-15	Dec-16	Dec-17	Sep-17	Oct-17	Nov-17	Dec-17	Jan-18	Feb-18	Mar-18	Apr-18	May-18	Jun-18	Jul-18	Aug-18	Sep-18
Active w-MEM	12053	11184	18592	14445	14411	14319	14422	14445	14506	14622	14821	14895	14705	14498	14931	15219	15134
Active w/out MEM	747	509	1814	553	581	550	557	553	551	534	533	544	549	536	532	534	528
Total Active Donors	12800	11693	20406	14998	14992	14869	14979	14998	15057	15156	15354	15439	15254	15034	15463	15753	15662
Percent Change					-0.26%	-0.82%	0.74%	0.13%	0.39%	0.66%	1.31%	0.55%	-1.20%	-1.44%	2.85%	1.88%	-0.58%
Lapsed/Drop MEM	1733	909	1016	1072	886	1122	837	1072	948	759	965	829	945	1154	784	794	896
Lapse w/out MEM	203	30	27	23	166	64	24	23	20	25	37	16	41	34	19	21	32
Lapsed/Drop Total	1936	939	1043	1095	1052	1186	861	1095	968	784	1002	845	986	1188	803	815	928
Percent Change					-51.25%	12.74%	-27.40%	27.18%	-11.60%	-19.01%	27.81%	-15.67%	16.69%	20.49%	-32.41%	1.49%	13.87%
New Donors w-MEM	110	103	321	444	297	313	322	444	331	245	329	258	233	203	547	353	215
New w/out MEM	6	6	11	15	14	13	18	15	12	7	22	15	35	13	14	18	17
New Total	116	109	332	459	311	326	340	459	343	252	351	273	268	216	561	371	232
Percent Change					4.01%	4.82%	4.29%	35.00%	-25.27%	-26.53%	39.29%	-22.22%	-1.83%	-19.40%	159.72%	-33.87%	-37.47%
Renewed w-MEM	729	792	723	651	679	717	618	651	678	630	835	645	522	744	670	729	596
Renewed w/out MEM	14	20	8	4	23	20	13	4	6	1	14	12	11	8	1	5	9
Total Renewals	743	812	731	655	702	737	631	655	684	631	849	657	533	752	671	734	605
Percent Change					17.98%	4.99%	-14.38%	3.80%	4.43%	-7.75%	34.55%	-22.61%	-18.87%	41.09%	-10.77%	9.39%	-17.57%
Total "MEM" *	133400	135197	145814	138815	137779	138083	138363	138815	134464	134697	135008	135249	135435	135656	136255	136533	136720
Percent Change					0.24%	0.22%	0.20%	0.53%	-3.13%	0.17%	0.23%	0.18%	0.14%	0.16%	0.44%	0.20%	0.14%
Total "LIFETIME" *	2446	2458	2571	2618	2610	2614	2614	2618	2567	2569	2574	2580	2585	2594	2636	2635	2643
Total "BSM"	12526	11045	19003	14668	14504	14426	14423	14668	14646	14702	14798	14891	14819	14634	14955	15298	15163

* Note: 01/18 Drop in Total Mem & TL Lifetime is result of PNCOA & Death Record append of 160k national records resulting in about 6k newly identified deceased effecting 80+ "active" record.

Last Year vs. This Year

	Sep-17	Sep-18	Change	12 Mo Ave	Active Donors w-MEM =	15134
Active w-MEM	14411	15134	5.02%	14710	Lapsed & Zero Dues MEM =	121586
Active w/out MEM	581	528	-9.12%	542	Total "MEM" w-Signed Certificate =	136720
Total Active Donors	14992	15662	4.47%	15252	Member Signed Certificate =	"MEM"
Lapsed/Dropped	1052	928	-11.79%	955	Total "BSM" =	15163
New Donors	311	232	-25.40%	333	Bylaws Defined Sustaining Member =	"BSM"
Renewals	702	605	-13.82%	678		

Sep-18 MEMBERSHIP BY STATE --- ACTIVE AND NON ACTIVE

SUSTAINING MEMBERSHIP STATE RANKINGS - "BSM"

STATE	TOTAL "MEM"	ACTIVE "MEM"	ACTIVE "SUB"	TOTAL "ACTIVE"	TOTAL "BSM"	STATE	TOTAL "MEM"	ACTIVE "MEM"	ACTIVE "SUB"	TOTAL "ACTIVE"	TOTAL "BSM"
AK	680	84	1	85	84	MT	566	76	3	79	78
AL	1801	207	5	212	211	NC	3447	406	16	422	407
AR	907	109	2	111	109	ND	248	41	2	43	41
AZ	3191	339	14	353	342	NE	668	97	1	98	100
CA	18723	1646	65	1711	1641	NH	1432	183	4	187	186
CO	3844	471	10	481	471	NJ	3025	338	11	349	335
CT	1475	168	9	177	173	NM	1174	148	4	152	148
DC	386	41	1	42	40	NV	1888	199	10	209	201
DE	401	49	1	50	50	NY	5028	689	34	723	695
FL	8234	835	34	869	842	OH	5021	639	13	652	631
GA	5820	458	9	467	465	OK	1112	182	3	185	182
HI	536	62	3	65	61	OR	2211	166	16	182	170
IA	1079	144	4	148	146	PA	5895	621	18	639	626
ID	795	79	3	82	81	RI	308	37	1	38	37
IL	4440	516	23	539	515	SC	1951	219	2	221	224
IN	3361	410	16	426	410	SD	281	48	2	50	48
KS	1192	134	4	138	135	TN	2644	337	3	340	338
KY	1220	140	6	146	141	TX	9515	1122	4	1126	1124
LA	1223	232	6	238	235	UT	1215	109	37	146	108
MA	2791	249	10	259	248	VA	4831	620	4	624	616
MD	2386	296	12	308	292	VT	398	37	14	51	36
ME	809	88	5	93	88	WA	4575	510	3	513	504
MI	5165	527	14	541	523	WI	2092	283	21	304	285
MN	2066	211	5	216	212	WV	607	68	15	83	68
MO	2326	258	10	268	261	WY	327	47	1	48	47
MS	724	100	5	105	98	XX	686	59	9	68	54

State	Total BSM	Rank	State	Total BSM	Rank
CA	1641	1	NH	186	27
TX	1124	2	OK	182	28
FL	842	3	CT	173	29
NY	695	4	OR	170	30
OH	631	5	NM	148	31
PA	626	6	IA	146	32
VA	616	7	KY	141	33
MI	523	8	KS	135	34
IL	515	9	AR	109	35
WA	504	10	UT	108	36
CO	471	11	NE	100	37
GA	465	12	MS	98	38
IN	410	13	ME	88	39
NC	407	14	AK	84	40
AZ	342	15	ID	81	41
TN	338	16	MT	78	42
NJ	335	17	WV	68	43
MD	292	18	HI	61	44
WI	285	19	DE	50	45
MO	261	20	SD	48	46
MA	248	21	WY	47	47
LA	235	22	ND	41	48
SC	224	23	DC	40	49
MN	212	24	RI	37	50
AL	211	25	VT	36	51
NV	201	26	XX	54	52
			Total:	15163	

TOTAL "MEM"	ACTIVE "MEM"	ACTIVE "SUB"	TOTAL "ACTIVE"	TOTAL "BSM"
TOTALS	136720	15134	528	15662

DEFINITIONS: MEM = Member Signed Certificate

Total MEM = Total # Constituents Per State w-Member Signed Certificate

ACTIVE MEM = Current Dues Paying or Lifetime Donor w-Signed Certificate

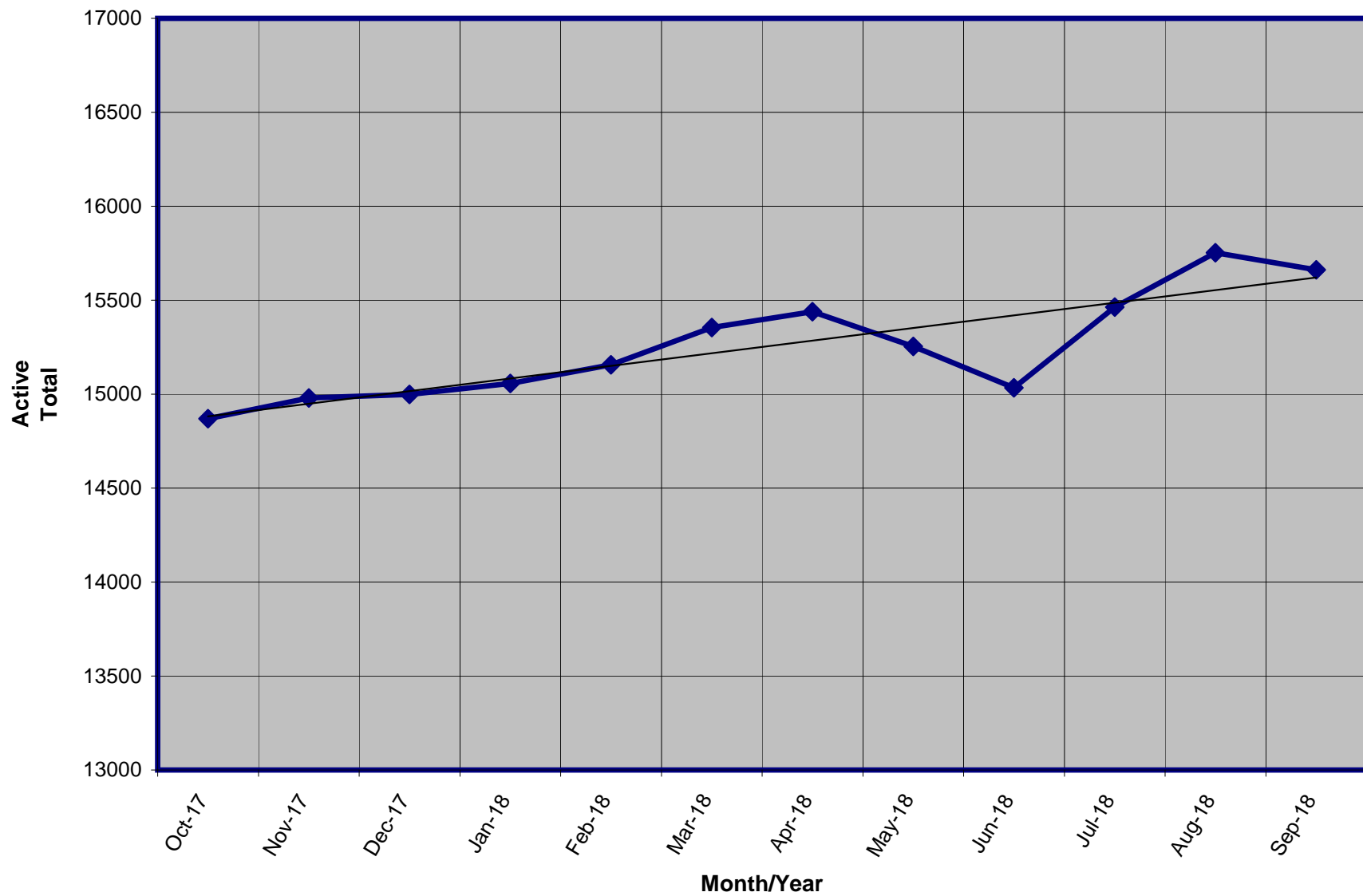
ACTIVE SUB (ACTIVE NON MEM) = Current Dues Paying or Lifetime Donors Who Have NOT Signed the Certificate (Formerly Called "Subscriber")

TOTAL ACTIVE = Current Dues Paying or Lifetime Donor

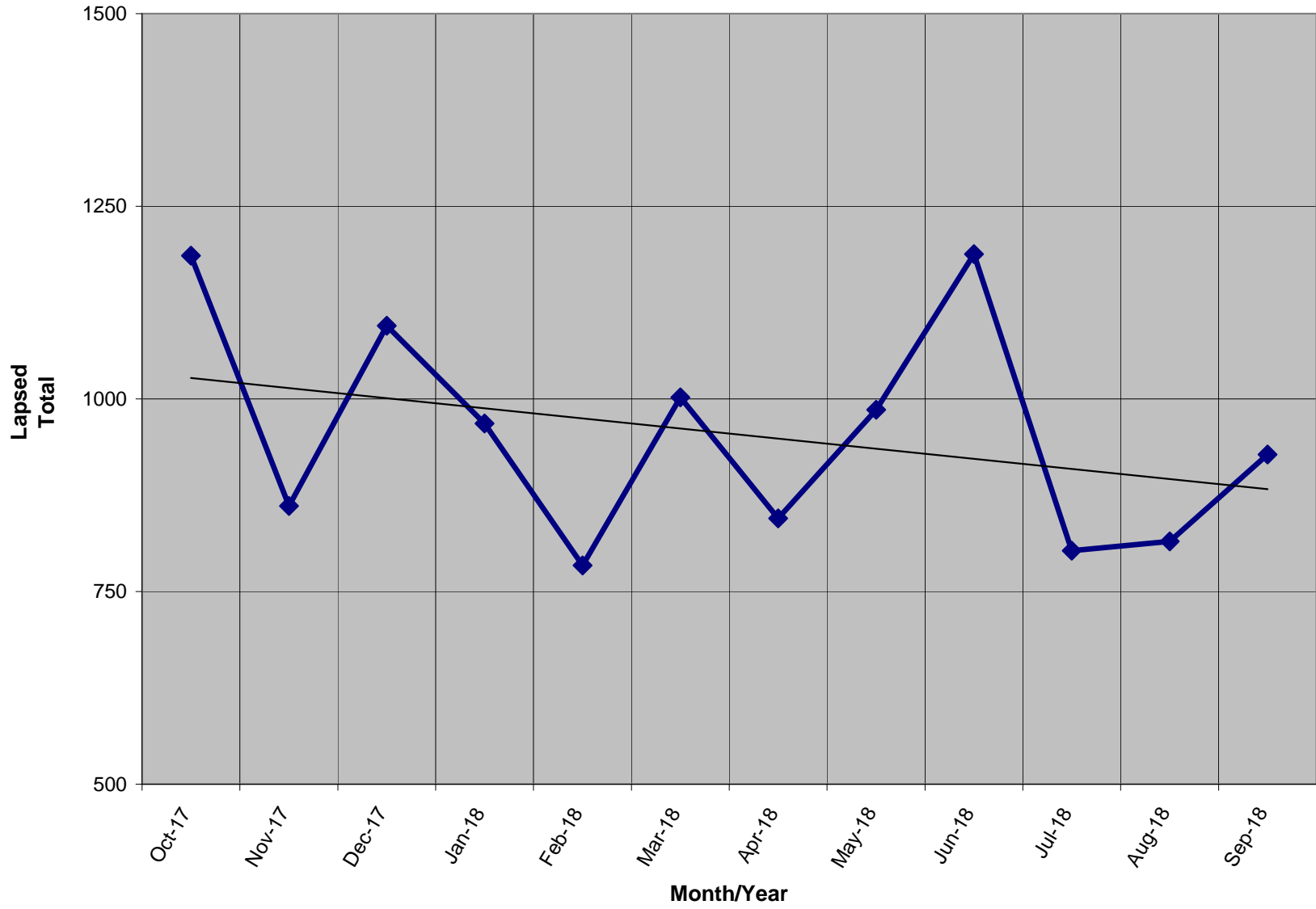
BSM = By Law Definition of "Sustaining Member" and number used for delegate count

(Art 5-3: "Sustaining member" is any Party member who has given at least \$25 to the Party in the prior twelve months, or who is a life member.)

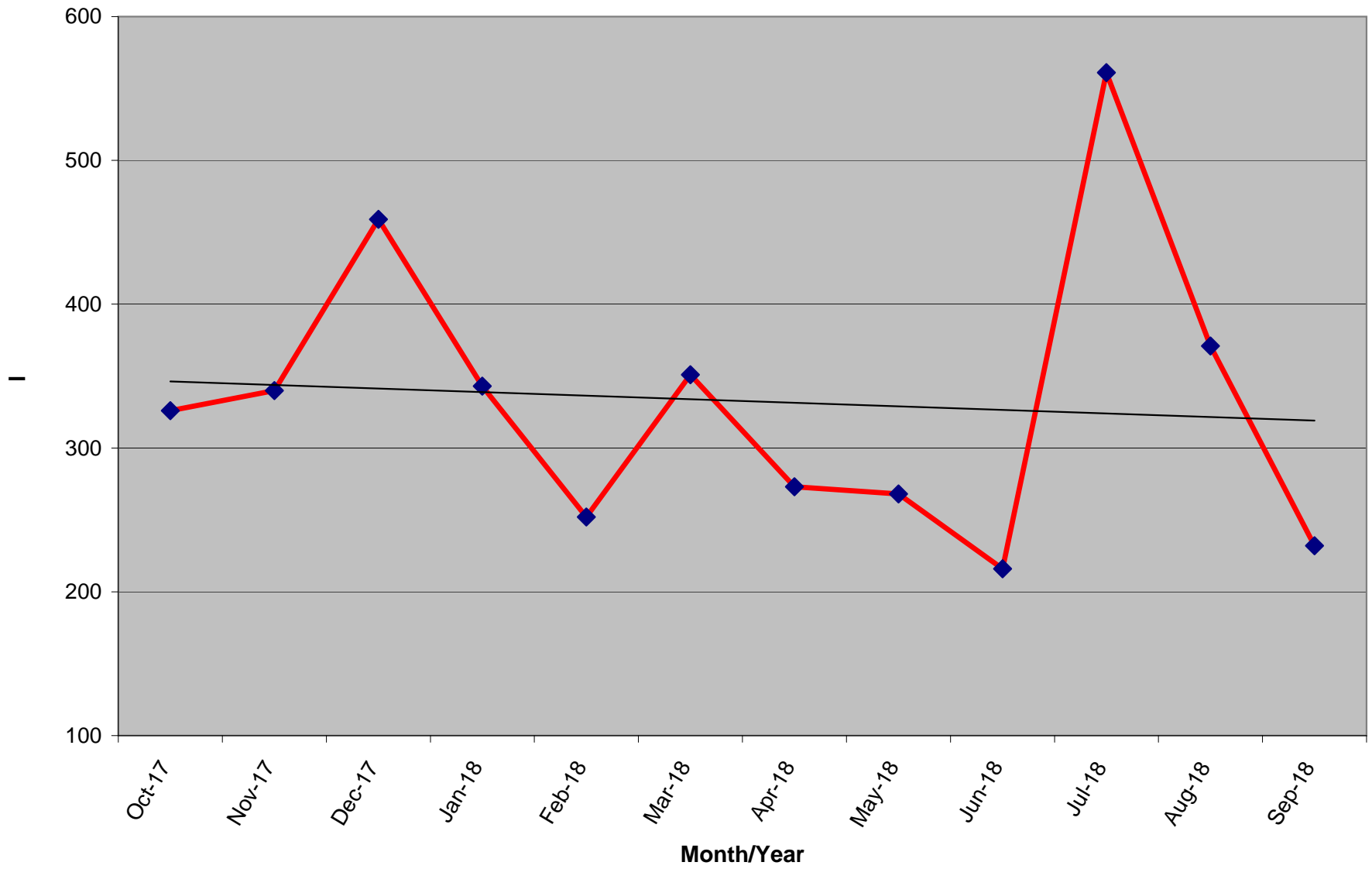
Active Donors - Past 12 Months



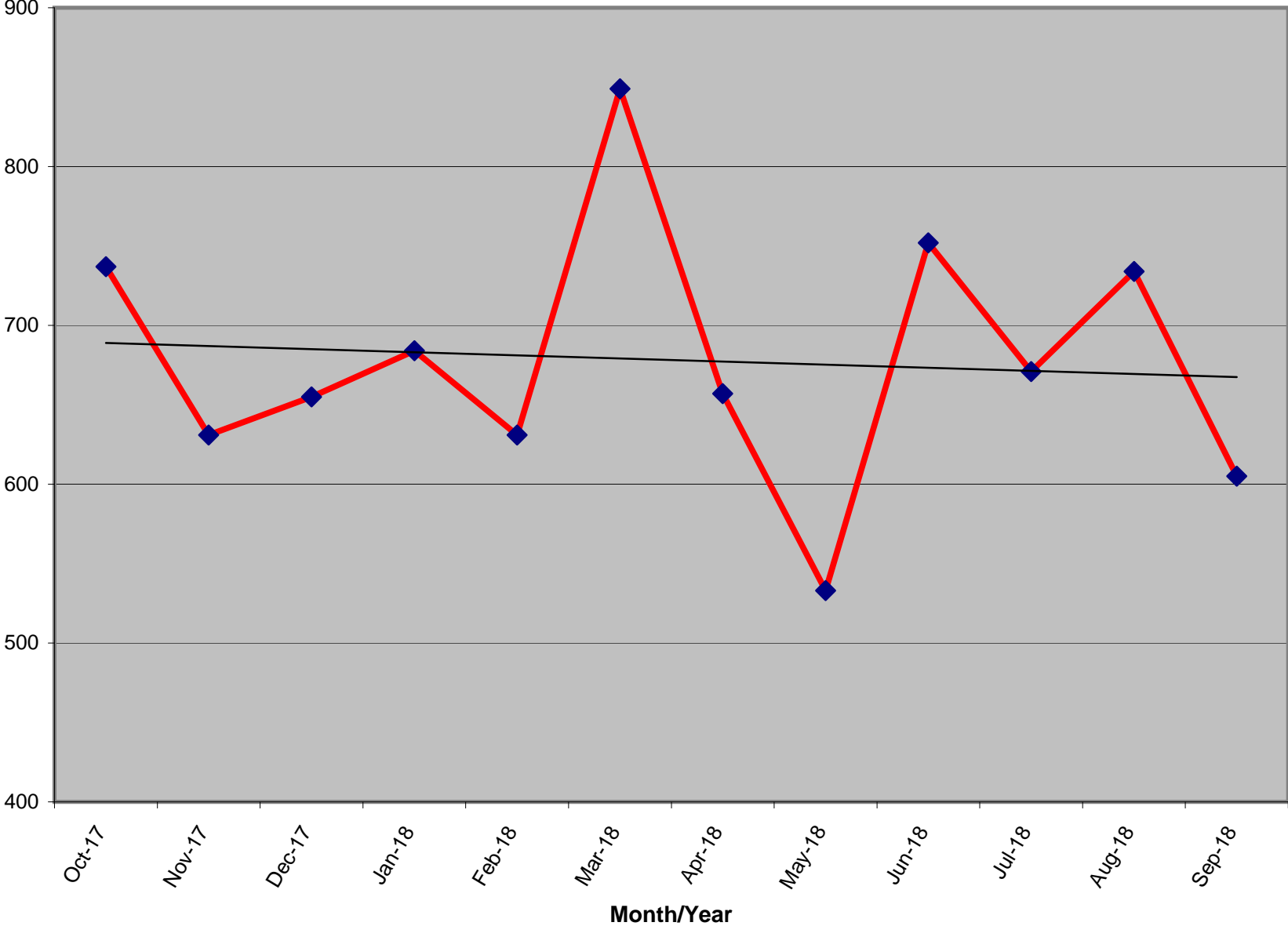
Lapsed - Dropped - Donors - Past 12 Months



New Donors Past 12 Months



Renew Donors - Past 12 Months



% OF ACTIVE MEMBERS VS. REGISTERED LIBERTARIAN VOTERS BY STATE

STATE	TI Reg Voters	Reg Lib	% Reg L to TI Reg	Total Active By State	Active to Registered
AK	520,646	7,593	1.46%	84	1.11%
AL	3,303,122	0	n/a	207	n/a
AR	1,744,141	348	0.02%	109	31.32%
AZ	3,662,382	31,554	0.86%	339	1.07%
CA *	18,854,829	141,368	0.75%	1,646	1.16%
CO	3,219,953	36,911	1.15%	471	1.28%
CT	2,116,421	2,900	0.14%	168	5.79%
DC	473,526	1,025	0.22%	41	4.00%
DE	689,083	1,640	0.24%	49	2.99%
FL **	13,694,743	31,682	0.23%	835	2.64%
GA	6,443,457	0	n/a	458	n/a
HI	716,458	0	n/a	62	n/a
IA	1,955,058	9,331	0.48%	144	1.54%
ID	801,151	6,482	0.81%	79	1.22%
IL	8,780,685	0	n/a	516	n/a
IN	4,355,147	0	n/a	410	n/a
KS	1,611,223	13,746	0.85%	134	0.97%
KY	3,346,095	8,250	0.25%	140	1.70%
LA	2,972,024	14,569	0.49%	232	1.59%
MA	4,486,849	8,587	0.19%	249	2.90%
MD	3,903,599	20,894	0.54%	296	1.42%
ME	1,036,264	5,573	0.54%	88	1.58%
MI	7,347,955	0	n/a	527	n/a
MN	3,268,360	0	n/a	211	n/a
MO	4,123,266	0	n/a	258	n/a
MS	2,044,713	0	n/a	100	n/a

*Voter registration totals provided by Richard Winger as of 03/18 - * CA as of 09/18 ** FLA 08/18*

STATE	TI Reg Voters	Reg Lib	% Reg L to TI Reg	Total Active By State	Active to Registered
MT	695,971	0	n/a	76	n/a
NC	6,849,567	34,563	0.50%	406	1.17%
ND	429,978	0	n/a	41	n/a
NE	1,195,069	13,012	1.09%	97	0.75%
NH	961,819	162	0.02%	183	112.96%
NJ	5,778,406	8,874	0.15%	338	3.81%
NM	1,220,056	7,792	0.64%	148	1.90%
NV	1,468,671	14,322	0.98%	199	1.39%
NY	11,546,694	6,502	0.06%	689	10.60%
OH	7,914,320	0	n/a	639	n/a
OK	2,013,849	4,796	0.24%	182	3.79%
OR	2,652,935	18,962	0.71%	166	0.88%
PA	8,492,584	45,142	0.53%	621	1.38%
RI	772,360	0	n/a	37	n/a
SC	3,268,076	0	n/a	219	n/a
SD	526,773	1,673	0.32%	48	2.87%
TN	4,112,566	0	n/a	337	n/a
TX	14,748,880	0	n/a	1,122	n/a
UT	1,307,119	10,927	0.84%	109	1.00%
VA	5,473,173	0	n/a	620	n/a
VT	459,719	0	n/a	37	n/a
WA	4,646,246	0	n/a	510	n/a
WI	5,842,402	0	n/a	283	n/a
WV	1,228,123	5,616	0.46%	68	1.21%
WY	262,620	2,410	0.92%	47	1.95%
XX	356,791	0	n/a	59	n/a
Totals	199,695,917	517,206	0.54%	15,134	2.93%

% OF ACTIVE MEMBERS VS. 2010 CENSUS POPULATION BY STATE

STATE	2010 Census	TI Active By State	Active to Population
AK	710,231	84	0.0118%
AL	4,779,736	207	0.0043%
AR	2,915,918	109	0.0037%
AZ	6,392,017	339	0.0053%
CA	37,253,956	1,646	0.0044%
CO	5,029,196	471	0.0094%
CT	3,574,097	168	0.0047%
DC	601,723	41	0.0068%
DE	897,934	49	0.0055%
FL	18,801,310	835	0.0044%
GA	9,687,653	458	0.0047%
HI	1,360,301	62	0.0046%
IA	3,046,355	144	0.0047%
ID	1,567,582	79	0.0050%
IL	12,830,632	516	0.0040%
IN	6,483,802	410	0.0063%
KS	2,853,118	134	0.0047%
KY	4,339,367	140	0.0032%
LA	4,533,372	232	0.0051%
MA	6,547,629	249	0.0038%
MD	5,773,552	296	0.0051%
ME	1,328,361	88	0.0066%
MI	9,883,640	527	0.0053%
MN	5,303,925	211	0.0040%
MO	5,988,927	258	0.0043%
MS	2,967,297	100	0.0034%

ACTIVE TO POPULATION BY RANK

STATE	2010 Census	TI Active By State	Active to Population
MT	989,415	76	0.0077%
NC	9,535,483	406	0.0043%
ND	672,591	41	0.0061%
NE	1,826,341	97	0.0053%
NH	1,316,470	183	0.0139%
NJ	8,791,894	338	0.0038%
NM	2,059,179	148	0.0072%
NV	2,700,551	199	0.0074%
NY	19,378,102	689	0.0036%
OH	11,536,504	639	0.0055%
OK	3,751,351	182	0.0049%
OR	3,831,074	166	0.0043%
PA	12,702,379	621	0.0049%
RI	1,052,567	37	0.0035%
SC	4,625,364	219	0.0047%
SD	814,180	48	0.0059%
TN	6,346,105	337	0.0053%
TX	25,145,561	1,122	0.0045%
UT	2,763,885	109	0.0039%
VA	8,001,024	620	0.0077%
VT	625,741	37	0.0059%
WA	6,724,540	510	0.0076%
WI	5,686,986	283	0.0050%
WV	1,852,994	68	0.0037%
WY	563,626	47	0.0083%
Totals	308,745,538	15,075	0.0049%

STATE	Rank	TI Active By State	Active to Population
NH	1	183	0.0139%
AK	2	84	0.0118%
CO	3	471	0.0094%
WY	4	47	0.0083%
VA	5	620	0.0077%
MT	6	76	0.0077%
WA	7	510	0.0076%
NV	8	199	0.0074%
NM	9	148	0.0072%
DC	10	41	0.0068%
ME	11	88	0.0066%
IN	12	410	0.0063%
ND	13	41	0.0061%
VT	14	37	0.0059%
SD	15	48	0.0059%
OH	16	639	0.0055%
DE	17	49	0.0055%
MI	18	527	0.0053%
NE	19	97	0.0053%
TN	20	337	0.0053%
AZ	21	339	0.0053%
MD	22	296	0.0051%
LA	23	232	0.0051%
ID	24	79	0.0050%
WI	25	283	0.0050%
PA	26	621	0.0049%

STATE	Rank	TI Active By State	Active to Population
OK	27	182	0.0049%
SC	28	219	0.0047%
GA	29	458	0.0047%
IA	30	144	0.0047%
CT	31	168	0.0047%
KS	32	134	0.0047%
HI	33	62	0.0046%
TX	34	1,122	0.0045%
FL	35	835	0.0044%
CA	36	1,646	0.0044%
OR	37	166	0.0043%
AL	38	207	0.0043%
MO	39	258	0.0043%
NC	40	406	0.0043%
IL	41	516	0.0040%
MN	42	211	0.0040%
UT	43	109	0.0039%
NJ	44	338	0.0038%
MA	45	249	0.0038%
AR	46	109	0.0037%
WV	47	68	0.0037%
NY	48	689	0.0036%
RI	49	37	0.0035%
MS	50	100	0.0034%
KY	51	140	0.0032%
Totals		15,075	0.0049%

* 2010 US Census Figures - does not include PR or other territories or out of US ("XX" states)