

**Libertarian National Committee - Membership Report**

**"Donor" Totals - Dec-18**

**4 Year & 12 Month Comparison**

	Dec-14	Dec-15	Dec-16	Dec-17	Dec-17	Jan-18	Feb-18	Mar-18	Apr-18	May-18	Jun-18	Jul-18	Aug-18	Sep-18	Oct-18	Nov-18	Dec-18
Active w-MEM	12053	11184	18592	14445	14445	14506	14622	14821	14895	14705	14498	14931	15219	15134	15100	14955	14494
Active w/out MEM	747	509	1814	553	553	551	534	533	544	549	536	532	534	528	531	525	514
<b>Total Active Donors</b>	<b>12800</b>	<b>11693</b>	<b>20406</b>	<b>14998</b>	<b>14998</b>	<b>15057</b>	<b>15156</b>	<b>15354</b>	<b>15439</b>	<b>15254</b>	<b>15034</b>	<b>15463</b>	<b>15753</b>	<b>15662</b>	<b>15631</b>	<b>15480</b>	<b>15008</b>
<b>Percent Change</b>					<b>0.13%</b>	<b>0.39%</b>	<b>0.66%</b>	<b>1.31%</b>	<b>0.55%</b>	<b>-1.20%</b>	<b>-1.44%</b>	<b>2.85%</b>	<b>1.88%</b>	<b>-0.58%</b>	<b>-0.20%</b>	<b>-0.97%</b>	<b>-3.05%</b>
Lapsed/Drop MEM	1733	909	1016	1072	1072	948	759	965	829	945	1154	784	794	896	969	962	1184
Lapse w/out MEM	203	30	27	23	23	20	25	37	16	41	34	19	21	32	29	30	27
<b>Lapsed/Drop Total</b>	<b>1936</b>	<b>939</b>	<b>1043</b>	<b>1095</b>	<b>1095</b>	<b>968</b>	<b>784</b>	<b>1002</b>	<b>845</b>	<b>986</b>	<b>1188</b>	<b>803</b>	<b>815</b>	<b>928</b>	<b>998</b>	<b>992</b>	<b>1211</b>
<b>Percent Change</b>					<b>27.18%</b>	<b>-11.60%</b>	<b>-19.01%</b>	<b>27.81%</b>	<b>-15.67%</b>	<b>16.69%</b>	<b>20.49%</b>	<b>-32.41%</b>	<b>1.49%</b>	<b>13.87%</b>	<b>7.54%</b>	<b>-0.60%</b>	<b>22.08%</b>
New Donors w-MEM	110	103	321	444	444	331	245	329	258	233	203	547	353	215	265	253	159
New w/out MEM	6	6	11	15	15	12	7	22	15	35	13	14	18	17	13	8	14
<b>New Total</b>	<b>116</b>	<b>109</b>	<b>332</b>	<b>459</b>	<b>459</b>	<b>343</b>	<b>252</b>	<b>351</b>	<b>273</b>	<b>268</b>	<b>216</b>	<b>561</b>	<b>371</b>	<b>232</b>	<b>278</b>	<b>261</b>	<b>173</b>
<b>Percent Change</b>					<b>35.00%</b>	<b>-25.27%</b>	<b>-26.53%</b>	<b>39.29%</b>	<b>-22.22%</b>	<b>-1.83%</b>	<b>-19.40%</b>	<b>159.72%</b>	<b>-33.87%</b>	<b>-37.47%</b>	<b>19.83%</b>	<b>-6.12%</b>	<b>-33.72%</b>
Renewed w-MEM	729	792	723	651	651	678	630	835	645	522	744	670	729	596	670	564	564
Renewed w/out MEM	14	20	8	4	4	6	1	14	12	11	8	1	5	9	19	16	2
<b>Total Renewals</b>	<b>743</b>	<b>812</b>	<b>731</b>	<b>655</b>	<b>655</b>	<b>684</b>	<b>631</b>	<b>849</b>	<b>657</b>	<b>533</b>	<b>752</b>	<b>671</b>	<b>734</b>	<b>605</b>	<b>689</b>	<b>580</b>	<b>566</b>
<b>Percent Change</b>					<b>3.80%</b>	<b>4.43%</b>	<b>-7.75%</b>	<b>34.55%</b>	<b>-22.61%</b>	<b>-18.87%</b>	<b>41.09%</b>	<b>-10.77%</b>	<b>9.39%</b>	<b>-17.57%</b>	<b>13.88%</b>	<b>-15.82%</b>	<b>-2.41%</b>
<b>Total "MEM" *</b>	<b>133400</b>	<b>135197</b>	<b>145814</b>	<b>138815</b>	<b>138815</b>	<b>134464</b>	<b>134697</b>	<b>135008</b>	<b>135249</b>	<b>135435</b>	<b>135656</b>	<b>136255</b>	<b>136533</b>	<b>136720</b>	<b>136952</b>	<b>137205</b>	<b>137321</b>
<b>Percent Change</b>					<b>0.53%</b>	<b>-3.13%</b>	<b>0.17%</b>	<b>0.23%</b>	<b>0.18%</b>	<b>0.14%</b>	<b>0.16%</b>	<b>0.44%</b>	<b>0.20%</b>	<b>0.14%</b>	<b>0.17%</b>	<b>0.18%</b>	<b>0.08%</b>
<b>Total "LIFETIME" *</b>	<b>2446</b>	<b>2458</b>	<b>2571</b>	<b>2618</b>	<b>2618</b>	<b>2567</b>	<b>2569</b>	<b>2574</b>	<b>2580</b>	<b>2585</b>	<b>2594</b>	<b>2636</b>	<b>2635</b>	<b>2643</b>	<b>2643</b>	<b>2646</b>	<b>2652</b>
<b>Total "BSM"</b>	<b>12526</b>	<b>11045</b>	<b>19003</b>	<b>14668</b>	<b>14668</b>	<b>14646</b>	<b>14702</b>	<b>14798</b>	<b>14891</b>	<b>14819</b>	<b>14634</b>	<b>14955</b>	<b>15298</b>	<b>15163</b>	<b>15150</b>	<b>15016</b>	<b>14639</b>

\* Note: 01/18 Drop in Total Mem & TL Lifetime is result of PNCOA & Death Record append of 160k national records resulting in about 6k newly identified deceased effecting 80+ "active" record.

**Last Year vs. This Year**

	Dec-17	Dec-18	Change	12 Mo Ave	Active Donors w-MEM =	14494
Active w-MEM	14445	14494	0.34%	14823	<b>Lapsed &amp; Zero Dues MEM =</b>	122827
Active w/out MEM	553	514	-7.05%	534	<b>Total "MEM" w-Signed Certificate =</b>	137321
<b>Total Active Donors</b>	<b>14998</b>	<b>15008</b>	<b>0.07%</b>	<b>15358</b>	<b>Member Signed Certificate =</b>	<b>"MEM"</b>
Lapsed/Dropped	1095	1211	10.59%	960	<b>Total "BSM" =</b>	14639
New Donors	459	173	-62.31%	298	<b>Bylaws Defined Sustaining Member =</b>	<b>"BSM"</b>
Renewals	655	566	-13.59%	663		

Dec-18 MEMBERSHIP BY STATE --- ACTIVE AND NON ACTIVE

STATE	TOTAL "MEM"	ACTIVE "MEM"	ACTIVE "SUB"	TOTAL "ACTIVE"	TOTAL "BSM"	STATE	TOTAL "MEM"	ACTIVE "MEM"	ACTIVE "SUB"	TOTAL "ACTIVE"	TOTAL "BSM"
AK	680	75	2	77	76	MT	567	61	3	64	67
AL	1816	202	5	207	204	NC	3468	395	13	408	398
AR	912	103	2	105	105	ND	247	35	2	37	35
AZ	3204	341	13	354	340	NE	671	89	0	89	91
CA	18760	1588	60	1648	1597	NH	1437	184	4	188	183
CO	3863	459	9	468	461	NJ	3033	324	11	335	325
CT	1481	160	9	169	165	NM	1178	146	4	150	146
DC	374	40	2	42	39	NV	1890	185	15	200	184
DE	403	51	1	52	51	NY	5063	681	34	715	687
FL	8257	802	31	833	803	OH	5062	629	12	641	633
GA	5851	453	10	463	455	OK	1120	172	3	175	170
HI	539	60	4	64	60	OR	2216	157	14	171	159
IA	1083	133	5	138	136	PA	5913	594	19	613	597
ID	797	78	2	80	80	RI	309	37	2	39	37
IL	4472	508	20	528	509	SC	1968	208	2	210	214
IN	3376	387	14	401	400	SD	283	46	2	48	46
KS	1196	138	3	141	139	TN	2663	322	4	326	330
KY	1229	134	6	140	136	TX	9580	1081	41	1122	1103
LA	1227	184	5	189	199	UT	1219	99	5	104	101
MA	2799	242	11	253	243	VA	4855	581	15	596	589
MD	2400	279	12	291	278	VT	398	30	3	33	29
ME	812	74	4	78	78	WA	4598	491	15	506	495
MI	5185	482	13	495	484	WI	2104	265	15	280	269
MN	2070	202	8	210	201	WV	610	68	0	68	69
MO	2337	246	10	256	249	WY	327	42	1	43	43
MS	731	90	3	93	94	XX	688	61	11	72	57

SUSTAINING MEMBERSHIP STATE RANKINGS - "BSM"

State	Total BSM	Rank	State	Total BSM	Rank
CA	1597	1	NH	183	27
TX	1103	2	OK	170	28
FL	803	3	CT	165	29
NY	687	4	OR	159	30
OH	633	5	NM	146	31
PA	597	6	KS	139	32
VA	589	7	IA	136	33
IL	509	8	KY	136	34
WA	495	9	AR	105	35
MI	484	10	UT	101	36
CO	461	11	MS	94	37
GA	455	12	NE	91	38
IN	400	13	ID	80	39
NC	398	14	ME	78	40
AZ	340	15	AK	76	41
TN	330	16	WV	69	42
NJ	325	17	MT	67	43
MD	278	18	HI	60	44
WI	269	19	DE	51	45
MO	249	20	SD	46	46
MA	243	21	WY	43	47
SC	214	22	DC	39	48
AL	204	23	RI	37	49
MN	201	24	ND	35	50
LA	199	25	VT	29	51
NV	184	26	XX	57	52
			Total:	14639	

TOTAL	ACTIVE	ACTIVE	TOTAL	TOTAL
"MEM"	"MEM"	"SUB"	"ACTIVE"	"BSM"
<b>TOTALS</b>	<b>137321</b>	<b>14494</b>	<b>514</b>	<b>15008</b>

DEFINITIONS: MEM = Member Signed Certificate

Total MEM = Total # Constituents Per State w-Member Signed Certificate

ACTIVE MEM = Current Dues Paying or Lifetime Donor w-Signed Certificate

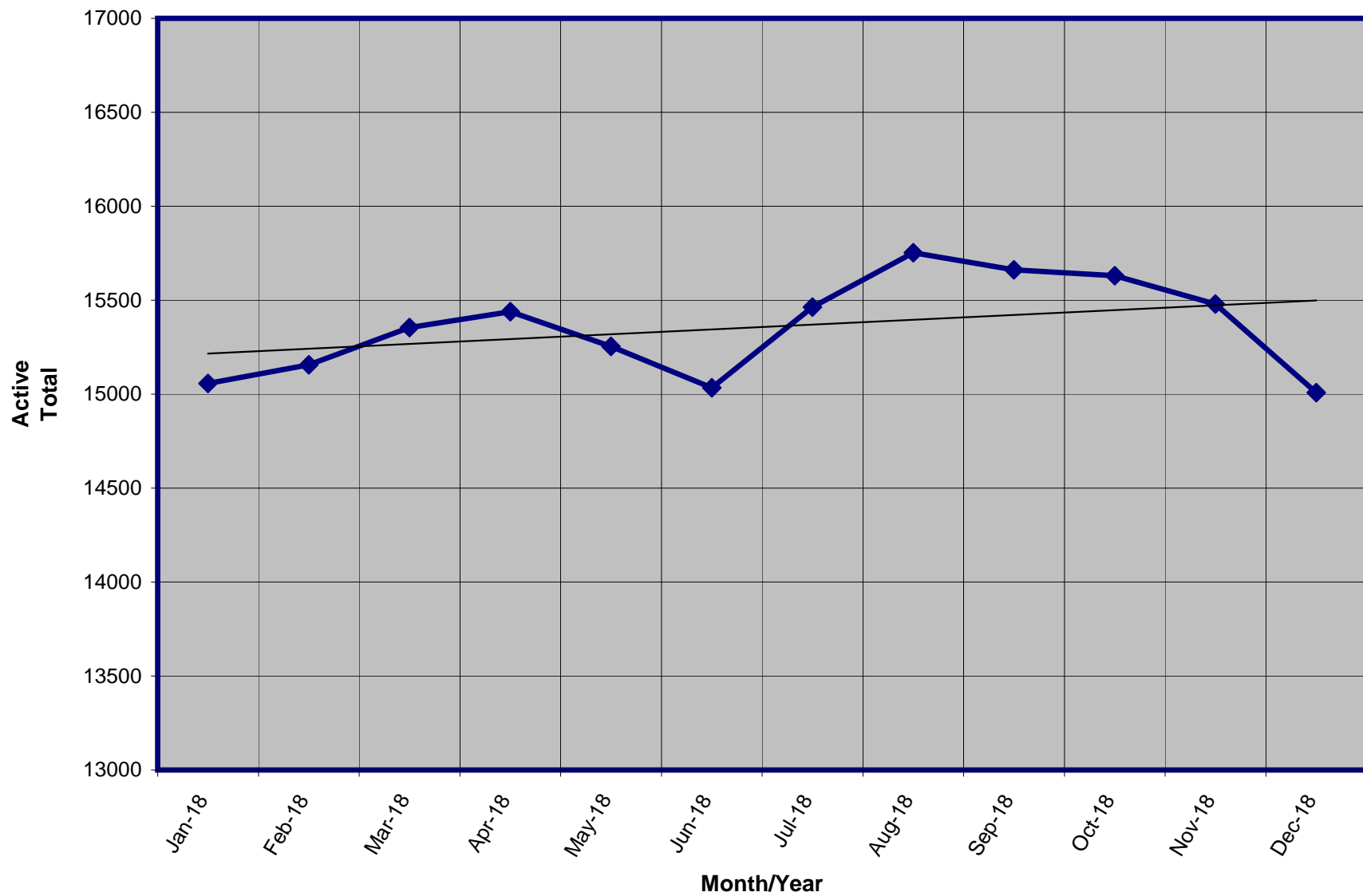
ACTIVE SUB (ACTIVE NON MEM) = Current Dues Paying or Lifetime Donors Who Have NOT Signed the Certificate (Formerly Called "Subscriber")

TOTAL ACTIVE = Current Dues Paying or Lifetime Donor

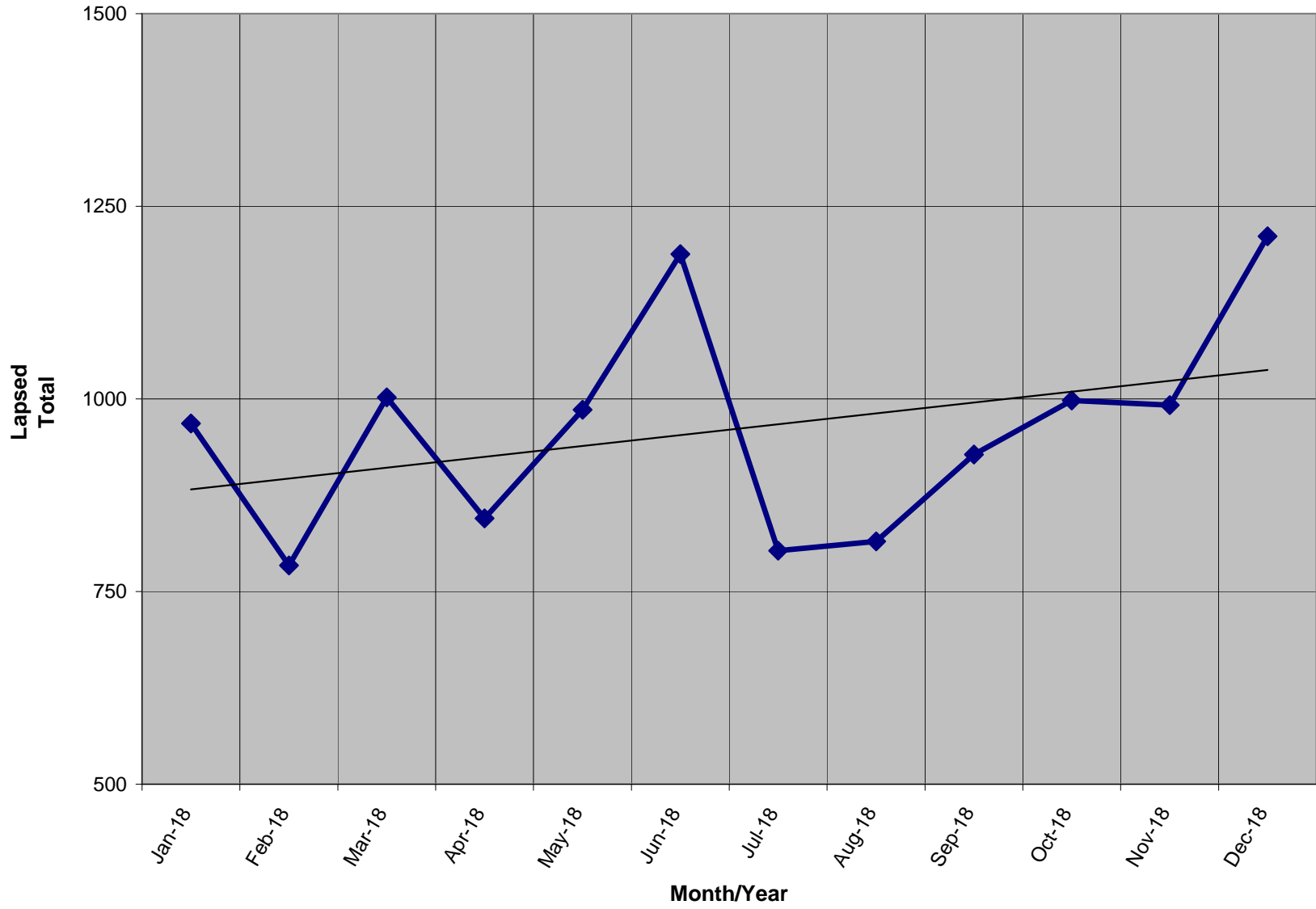
BSM = By Law Definition of "Sustaining Member" and number used for delegate count

(Art 5-3: "Sustaining member" is any Party member who has given at least \$25 to the Party in the prior twelve months, or who is a life member.)

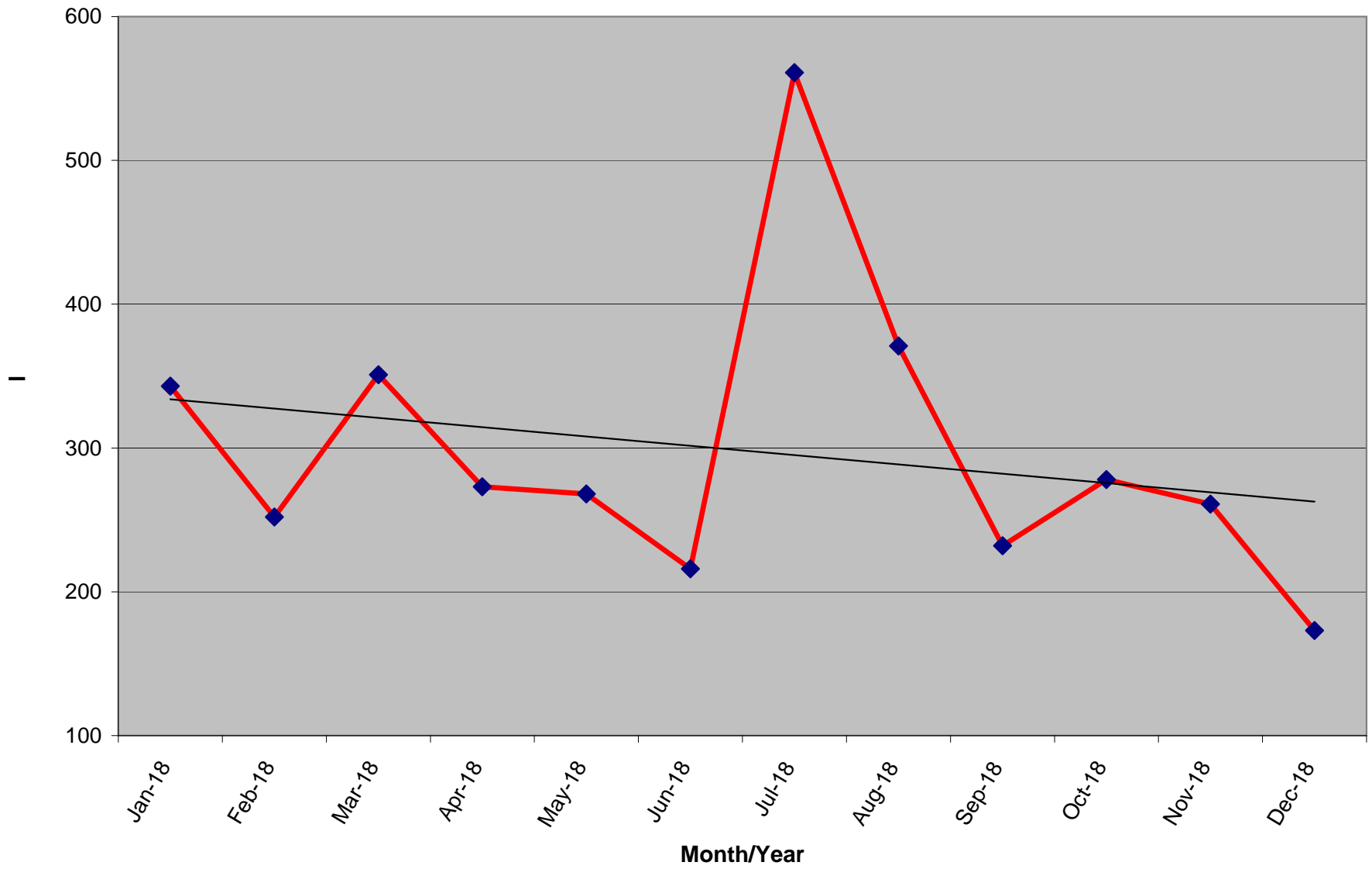
Active Donors - Past 12 Months



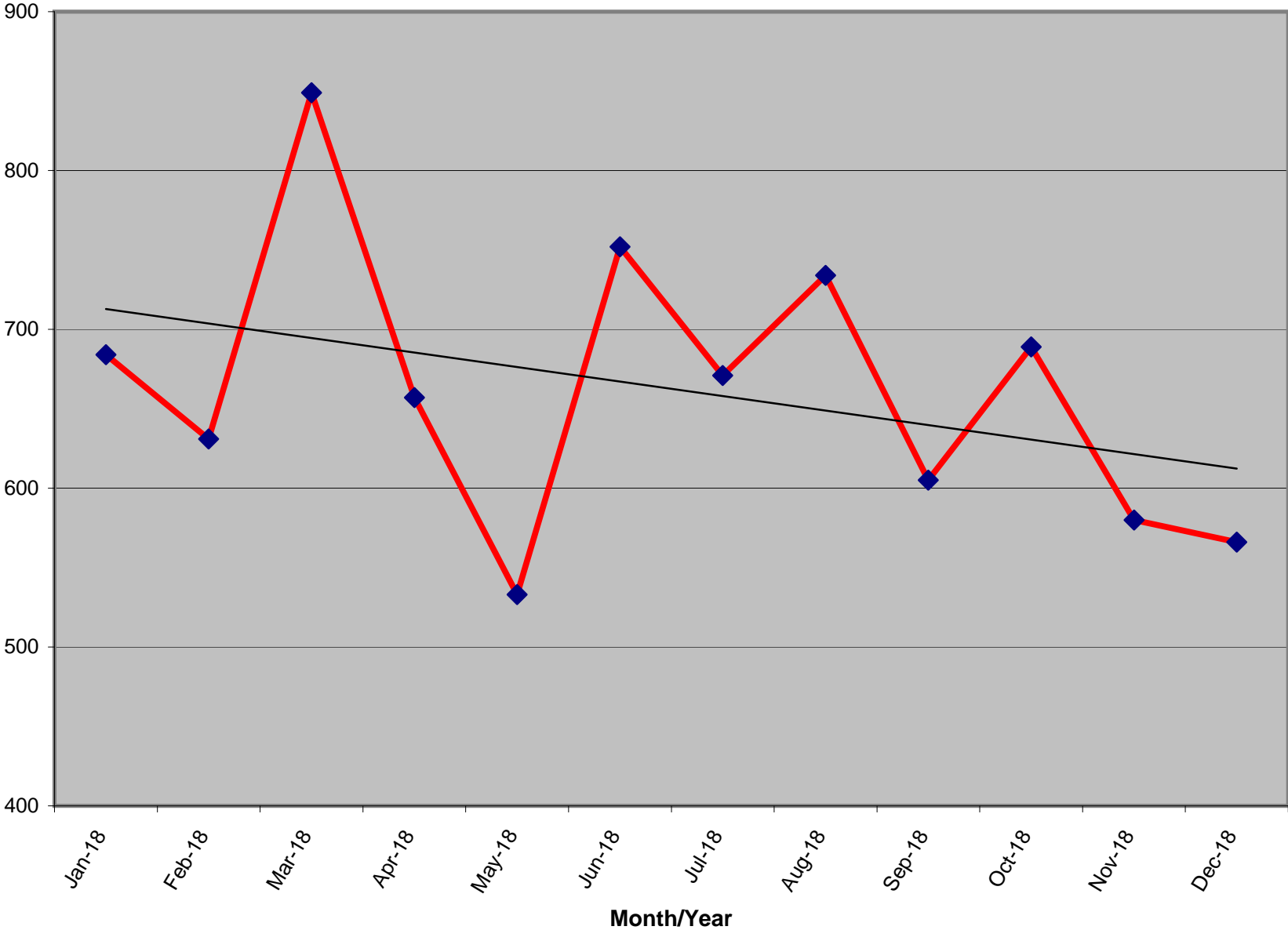
Lapsed - Dropped - Donors - Past 12 Months



New Donors Past 12 Months



Renew Donors - Past 12 Months



**% OF ACTIVE MEMBERS VS. REGISTERED LIBERTARIAN VOTERS BY STATE**

STATE	TI Reg Voters	Reg Lib	% Reg L to TI Reg	Total Active By State	Active to Registered	STATE	TI Reg Voters	Reg Lib	% Reg L to TI Reg	Total Active By State	Active to Registered
AK	520,646	7,593	1.46%	75	0.99%	MT	695,971	0	n/a	61	n/a
AL	3,303,122	0	n/a	202	n/a	NC	6,849,567	34,563	0.50%	395	1.14%
AR	1,744,141	348	0.02%	103	29.60%	ND	429,978	0	n/a	35	n/a
AZ	3,662,382	31,554	0.86%	341	1.08%	NE	1,195,069	13,012	1.09%	89	0.68%
CA *	18,854,829	141,368	0.75%	1,588	1.12%	NH	961,819	162	0.02%	184	113.58%
CO	3,219,953	36,911	1.15%	459	1.24%	NJ	5,778,406	8,874	0.15%	324	3.65%
CT ***	2,156,316	2,959	0.14%	160	5.41%	NM	1,220,056	7,792	0.64%	146	1.87%
DC	473,526	1,025	0.22%	40	3.90%	NV	1,468,671	14,322	0.98%	185	1.29%
DE	689,083	1,640	0.24%	51	3.11%	NY	11,546,694	6,502	0.06%	681	10.47%
FL **	13,694,743	31,682	0.23%	802	2.53%	OH	7,914,320	0	n/a	629	n/a
GA	6,443,457	0	n/a	453	n/a	OK ***	2,112,991	8,497	0.40%	172	2.02%
HI	716,458	0	n/a	60	n/a	OR	2,652,935	18,962	0.71%	157	0.83%
IA	1,955,058	9,331	0.48%	133	1.43%	PA ***	8,609,880	44,848	0.52%	594	1.32%
ID	801,151	6,482	0.81%	78	1.20%	RI	772,360	0	n/a	37	n/a
IL	8,780,685	0	n/a	508	n/a	SC	3,268,076	0	n/a	208	n/a
IN	4,355,147	0	n/a	387	n/a	SD	526,773	1,673	0.32%	46	2.75%
KS	1,611,223	13,746	0.85%	138	1.00%	TN	4,112,566	0	n/a	322	n/a
KY	3,346,095	8,250	0.25%	134	1.62%	TX	14,748,880	0	n/a	1,081	n/a
LA	2,972,024	14,569	0.49%	184	1.26%	UT	1,307,119	10,927	0.84%	99	0.91%
MA ***	4,574,967	15,787	0.35%	242	1.53%	VA	5,473,173	0	n/a	581	n/a
MD	3,903,599	20,894	0.54%	279	1.34%	VT	459,719	0	n/a	30	n/a
ME ***	1,028,602	5,554	0.54%	74	1.33%	WA	4,646,246	0	n/a	491	n/a
MI	7,347,955	0	n/a	482	n/a	WI	5,842,402	0	n/a	265	n/a
MN	3,268,360	0	n/a	202	n/a	WV	1,228,123	5,616	0.46%	68	1.21%
MO	4,123,266	0	n/a	246	n/a	WY	262,620	2,410	0.92%	42	1.74%
MS	2,044,713	0	n/a	90	n/a	XX	356,791	0	n/a	61	n/a
						<b>Totals</b>	<b>200,032,706</b>	<b>527,853</b>	<b>0.55%</b>	<b>14,494</b>	<b>2.75%</b>

Registration totals provided by Richard Winger as of 03/18 - \* CA & MA as of 09/18 \*\* FLA 08/18 \*\*\* OK/CT 10/18

**% OF ACTIVE MEMBERS VS. 2010 CENSUS POPULATION BY STATE**

STATE	2010 Census	TI Active By State	Active to Population
AK	710,231	75	0.0106%
AL	4,779,736	202	0.0042%
AR	2,915,918	103	0.0035%
AZ	6,392,017	341	0.0053%
CA	37,253,956	1,588	0.0043%
CO	5,029,196	459	0.0091%
CT	3,574,097	160	0.0045%
DC	601,723	40	0.0066%
DE	897,934	51	0.0057%
FL	18,801,310	802	0.0043%
GA	9,687,653	453	0.0047%
HI	1,360,301	60	0.0044%
IA	3,046,355	133	0.0044%
ID	1,567,582	78	0.0050%
IL	12,830,632	508	0.0040%
IN	6,483,802	387	0.0060%
KS	2,853,118	138	0.0048%
KY	4,339,367	134	0.0031%
LA	4,533,372	184	0.0041%
MA	6,547,629	242	0.0037%
MD	5,773,552	279	0.0048%
ME	1,328,361	74	0.0056%
MI	9,883,640	482	0.0049%
MN	5,303,925	202	0.0038%
MO	5,988,927	246	0.0041%
MS	2,967,297	90	0.0030%

**ACTIVE TO POPULATION BY RANK**

STATE	2010 Census	TI Active By State	Active to Population
MT	989,415	61	0.0062%
NC	9,535,483	395	0.0041%
ND	672,591	35	0.0052%
NE	1,826,341	89	0.0049%
NH	1,316,470	184	0.0140%
NJ	8,791,894	324	0.0037%
NM	2,059,179	146	0.0071%
NV	2,700,551	185	0.0069%
NY	19,378,102	681	0.0035%
OH	11,536,504	629	0.0055%
OK	3,751,351	172	0.0046%
OR	3,831,074	157	0.0041%
PA	12,702,379	594	0.0047%
RI	1,052,567	37	0.0035%
SC	4,625,364	208	0.0045%
SD	814,180	46	0.0056%
TN	6,346,105	322	0.0051%
TX	25,145,561	1,081	0.0043%
UT	2,763,885	99	0.0036%
VA	8,001,024	581	0.0073%
VT	625,741	30	0.0048%
WA	6,724,540	491	0.0073%
WI	5,686,986	265	0.0047%
WV	1,852,994	68	0.0037%
WY	563,626	42	0.0075%
Totals	308,745,538	14,433	0.0047%

STATE	Rank	TI Active By State	Active to Population
NH	1	184	0.0140%
AK	2	75	0.0106%
CO	3	459	0.0091%
WY	4	42	0.0075%
WA	5	491	0.0073%
VA	6	581	0.0073%
NM	7	146	0.0071%
NV	8	185	0.0069%
DC	9	40	0.0066%
MT	10	61	0.0062%
IN	11	387	0.0060%
DE	12	51	0.0057%
SD	13	46	0.0056%
ME	14	74	0.0056%
OH	15	629	0.0055%
AZ	16	341	0.0053%
ND	17	35	0.0052%
TN	18	322	0.0051%
ID	19	78	0.0050%
MI	20	482	0.0049%
NE	21	89	0.0049%
KS	22	138	0.0048%
MD	23	279	0.0048%
VT	24	30	0.0048%
PA	25	594	0.0047%
GA	26	453	0.0047%

STATE	Rank	TI Active By State	Active to Population
WI	27	265	0.0047%
OK	28	172	0.0046%
SC	29	208	0.0045%
CT	30	160	0.0045%
HI	31	60	0.0044%
IA	32	133	0.0044%
TX	33	1,081	0.0043%
FL	34	802	0.0043%
CA	35	1,588	0.0043%
AL	36	202	0.0042%
NC	37	395	0.0041%
MO	38	246	0.0041%
OR	39	157	0.0041%
LA	40	184	0.0041%
IL	41	508	0.0040%
MN	42	202	0.0038%
MA	43	242	0.0037%
NJ	44	324	0.0037%
WV	45	68	0.0037%
UT	46	99	0.0036%
AR	47	103	0.0035%
RI	48	37	0.0035%
NY	49	681	0.0035%
KY	50	134	0.0031%
MS	51	90	0.0030%
Totals		14,433	0.0047%

\* 2010 US Census Figures - does not include PR or other territories or out of US ("XX" states)