

**Libertarian National Committee - Membership Report**

**"Donor" Totals - Nov-18**

**4 Year & 12 Month Comparison**

	Dec-14	Dec-15	Dec-16	Dec-17	Nov-17	Dec-17	Jan-18	Feb-18	Mar-18	Apr-18	May-18	Jun-18	Jul-18	Aug-18	Sep-18	Oct-18	Nov-18
Active w-MEM	12053	11184	18592	14445	14422	14445	14506	14622	14821	14895	14705	14498	14931	15219	15134	15100	14955
Active w/out MEM	747	509	1814	553	557	553	551	534	533	544	549	536	532	534	528	531	525
<b>Total Active Donors</b>	<b>12800</b>	<b>11693</b>	<b>20406</b>	<b>14998</b>	<b>14979</b>	<b>14998</b>	<b>15057</b>	<b>15156</b>	<b>15354</b>	<b>15439</b>	<b>15254</b>	<b>15034</b>	<b>15463</b>	<b>15753</b>	<b>15662</b>	<b>15631</b>	<b>15480</b>
<b>Percent Change</b>					<b>0.74%</b>	<b>0.13%</b>	<b>0.39%</b>	<b>0.66%</b>	<b>1.31%</b>	<b>0.55%</b>	<b>-1.20%</b>	<b>-1.44%</b>	<b>2.85%</b>	<b>1.88%</b>	<b>-0.58%</b>	<b>-0.20%</b>	<b>-0.97%</b>
Lapsed/Drop MEM	1733	909	1016	1072	837	1072	948	759	965	829	945	1154	784	794	896	969	962
Lapse w/out MEM	203	30	27	23	24	23	20	25	37	16	41	34	19	21	32	29	30
<b>Lapsed/Drop Total</b>	<b>1936</b>	<b>939</b>	<b>1043</b>	<b>1095</b>	<b>861</b>	<b>1095</b>	<b>968</b>	<b>784</b>	<b>1002</b>	<b>845</b>	<b>986</b>	<b>1188</b>	<b>803</b>	<b>815</b>	<b>928</b>	<b>998</b>	<b>992</b>
<b>Percent Change</b>					<b>-27.40%</b>	<b>27.18%</b>	<b>-11.60%</b>	<b>-19.01%</b>	<b>27.81%</b>	<b>-15.67%</b>	<b>16.69%</b>	<b>20.49%</b>	<b>-32.41%</b>	<b>1.49%</b>	<b>13.87%</b>	<b>7.54%</b>	<b>-0.60%</b>
New Donors w-MEM	110	103	321	444	322	444	331	245	329	258	233	203	547	353	215	265	253
New w/out MEM	6	6	11	15	18	15	12	7	22	15	35	13	14	18	17	13	8
<b>New Total</b>	<b>116</b>	<b>109</b>	<b>332</b>	<b>459</b>	<b>340</b>	<b>459</b>	<b>343</b>	<b>252</b>	<b>351</b>	<b>273</b>	<b>268</b>	<b>216</b>	<b>561</b>	<b>371</b>	<b>232</b>	<b>278</b>	<b>261</b>
<b>Percent Change</b>					<b>4.29%</b>	<b>35.00%</b>	<b>-25.27%</b>	<b>-26.53%</b>	<b>39.29%</b>	<b>-22.22%</b>	<b>-1.83%</b>	<b>-19.40%</b>	<b>159.72%</b>	<b>-33.87%</b>	<b>-37.47%</b>	<b>19.83%</b>	<b>-6.12%</b>
Renewed w-MEM	729	792	723	651	618	651	678	630	835	645	522	744	670	729	596	670	564
Renewed w/out MEM	14	20	8	4	13	4	6	1	14	12	11	8	1	5	9	19	16
<b>Total Renewals</b>	<b>743</b>	<b>812</b>	<b>731</b>	<b>655</b>	<b>631</b>	<b>655</b>	<b>684</b>	<b>631</b>	<b>849</b>	<b>657</b>	<b>533</b>	<b>752</b>	<b>671</b>	<b>734</b>	<b>605</b>	<b>689</b>	<b>580</b>
<b>Percent Change</b>					<b>-14.38%</b>	<b>3.80%</b>	<b>4.43%</b>	<b>-7.75%</b>	<b>34.55%</b>	<b>-22.61%</b>	<b>-18.87%</b>	<b>41.09%</b>	<b>-10.77%</b>	<b>9.39%</b>	<b>-17.57%</b>	<b>13.88%</b>	<b>-15.82%</b>
<b>Total "MEM" *</b>	<b>133400</b>	<b>135197</b>	<b>145814</b>	<b>138815</b>	<b>138363</b>	<b>138815</b>	<b>134464</b>	<b>134697</b>	<b>135008</b>	<b>135249</b>	<b>135435</b>	<b>135656</b>	<b>136255</b>	<b>136533</b>	<b>136720</b>	<b>136952</b>	<b>137205</b>
<b>Percent Change</b>					<b>0.20%</b>	<b>0.53%</b>	<b>-3.13%</b>	<b>0.17%</b>	<b>0.23%</b>	<b>0.18%</b>	<b>0.14%</b>	<b>0.16%</b>	<b>0.44%</b>	<b>0.20%</b>	<b>0.14%</b>	<b>0.17%</b>	<b>0.18%</b>
<b>Total "LIFETIME" *</b>	<b>2446</b>	<b>2458</b>	<b>2571</b>	<b>2618</b>	<b>2614</b>	<b>2618</b>	<b>2567</b>	<b>2569</b>	<b>2574</b>	<b>2580</b>	<b>2585</b>	<b>2594</b>	<b>2636</b>	<b>2635</b>	<b>2643</b>	<b>2643</b>	<b>2646</b>
<b>Total "BSM"</b>	<b>12526</b>	<b>11045</b>	<b>19003</b>	<b>14668</b>	<b>14423</b>	<b>14668</b>	<b>14646</b>	<b>14702</b>	<b>14798</b>	<b>14891</b>	<b>14819</b>	<b>14634</b>	<b>14955</b>	<b>15298</b>	<b>15163</b>	<b>15150</b>	<b>15016</b>

\* Note: 01/18 Drop in Total Mem & TL Lifetime is result of PNCOA & Death Record append of 160k national records resulting in about 6k newly identified deceased effecting 80+ "active" record.

**Last Year vs. This Year**

	Nov-17	Nov-18	Change	12 Mo Ave		
Active w-MEM	14422	14955	3.70%	14819	<u>Active Donors w-MEM =</u>	14955
Active w/out MEM	557	525	-5.75%	538	<u>Lapsed &amp; Zero Dues MEM =</u>	122250
<b>Total Active Donors</b>	<b>14979</b>	<b>15480</b>	<b>3.34%</b>	<b>15357</b>	<u>Total "MEM" w-Signed Certificate =</u>	<b>137205</b>
Lapsed/Dropped	861	992	15.21%	950	<u>Member Signed Certificate =</u>	<b>"MEM"</b>
New Donors	340	261	-23.24%	322	<u>Total "BSM" =</u>	15016
Renewals	631	580	-8.08%	670	<u>Bylaws Defined Sustaining Member =</u>	<b>"BSM"</b>

Nov-18 MEMBERSHIP BY STATE --- ACTIVE AND NON ACTIVE

SUSTAINING MEMBERSHIP STATE RANKINGS - "BSM"

STATE	TOTAL "MEM"	ACTIVE "MEM"	ACTIVE "SUB"	TOTAL "ACTIVE"	TOTAL "BSM"	STATE	TOTAL "MEM"	ACTIVE "MEM"	ACTIVE "SUB"	TOTAL "ACTIVE"	TOTAL "BSM"
AK	680	82	1	83	82	MT	567	66	3	69	74
AL	1815	210	5	215	215	NC	3466	404	13	417	413
AR	913	108	2	110	110	ND	247	37	2	39	37
AZ	3198	346	13	359	344	NE	670	93	0	93	96
CA	18748	1616	68	1684	1622	NH	1436	184	4	188	183
CO	3860	468	9	477	470	NJ	3030	325	11	336	327
CT	1479	163	9	172	165	NM	1176	143	4	147	146
DC	376	40	1	41	40	NV	1891	191	14	205	192
DE	404	51	1	52	53	NY	5059	696	36	732	694
FL	8245	816	31	847	815	OH	5057	651	11	662	642
GA	5846	462	9	471	470	OK	1116	176	3	179	173
HI	538	59	3	62	59	OR	2215	162	14	176	162
IA	1081	135	5	140	138	PA	5909	612	19	631	613
ID	796	78	2	80	79	RI	308	36	2	38	36
IL	4468	528	23	551	519	SC	1964	211	2	213	217
IN	3377	407	14	421	407	SD	282	46	2	48	46
KS	1196	138	3	141	139	TN	2659	328	4	332	334
KY	1225	138	6	144	139	TX	9567	1124	40	1164	1127
LA	1229	222	5	227	227	UT	1218	106	5	111	106
MA	2799	250	11	261	252	VA	4854	603	16	619	610
MD	2397	291	12	303	289	VT	399	34	3	37	33
ME	811	85	5	90	89	WA	4594	508	19	527	507
MI	5181	510	13	523	507	WI	2103	280	15	295	281
MN	2069	212	7	219	214	WV	610	69	0	69	69
MO	2333	252	10	262	254	WY	327	43	1	44	43
MS	731	98	3	101	98	XX	686	62	11	73	59

State	Total BSM	Rank	State	Total BSM	Rank
CA	1622	1	NH	183	27
TX	1127	2	OK	173	28
FL	815	3	CT	165	29
NY	694	4	OR	162	30
OH	642	5	NM	146	31
PA	613	6	KS	139	32
VA	610	7	KY	139	33
IL	519	8	IA	138	34
MI	507	9	AR	110	35
WA	507	10	UT	106	36
CO	470	11	MS	98	37
GA	470	12	NE	96	38
NC	413	13	ME	89	39
IN	407	14	AK	82	40
AZ	344	15	ID	79	41
TN	334	16	MT	74	42
NJ	327	17	WV	69	43
MD	289	18	HI	59	44
WI	281	19	DE	53	45
MO	254	20	SD	46	46
MA	252	21	WY	43	47
LA	227	22	DC	40	48
SC	217	23	ND	37	49
AL	215	24	RI	36	50
MN	214	25	VT	33	51
NV	192	26	XX	59	52
			Total:	15016	

TOTAL "MEM"	ACTIVE "MEM"	ACTIVE "SUB"	TOTAL "ACTIVE"	TOTAL "BSM"
<b>TOTALS</b>	<b>137205</b>	<b>14955</b>	<b>525</b>	<b>15480</b>

*DEFINITIONS: MEM = Member Signed Certificate*

*Total MEM = Total # Constituents Per State w-Member Signed Certificate*

*ACTIVE MEM = Current Dues Paying or Lifetime Donor w-Signed Certificate*

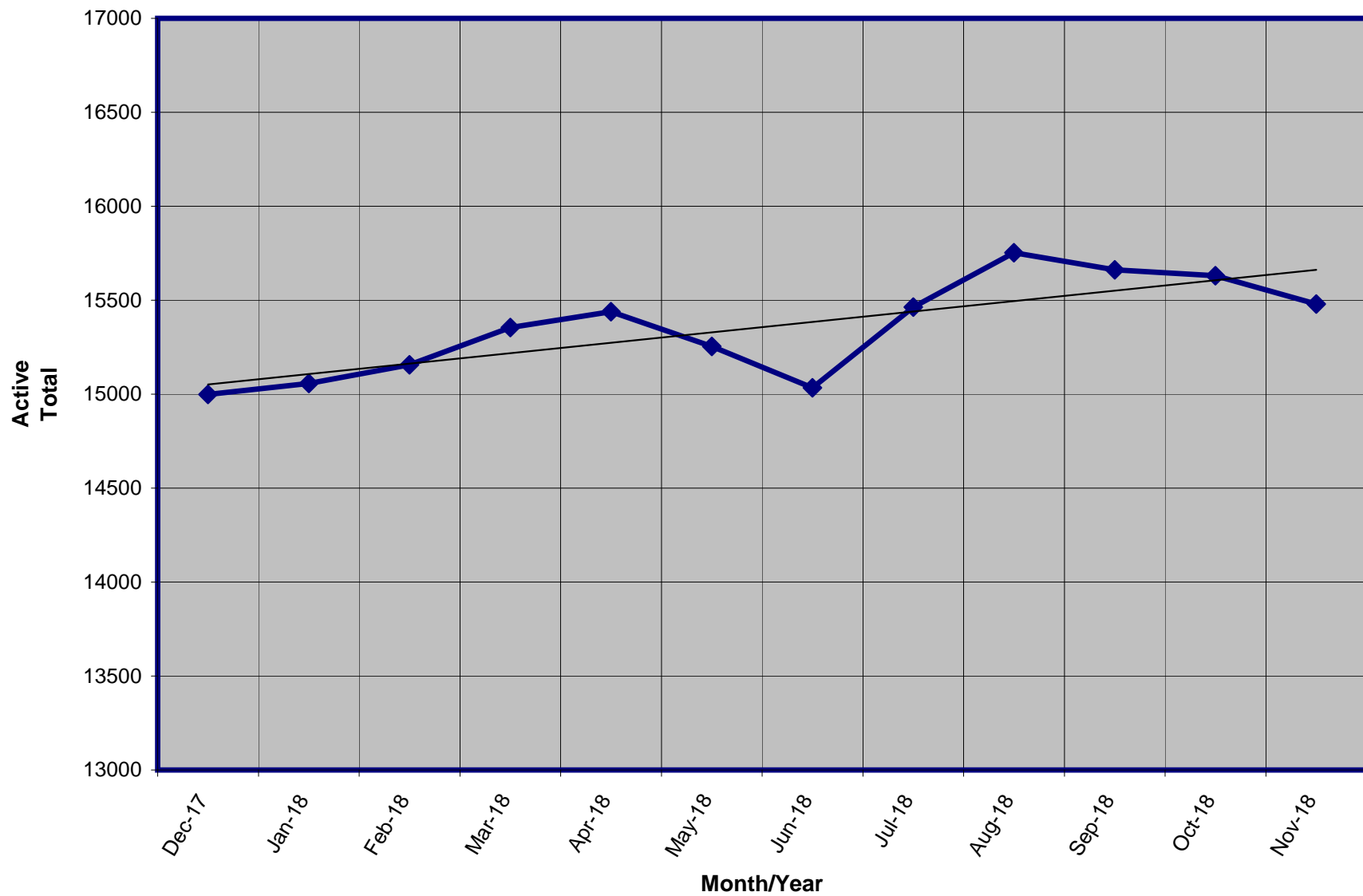
*ACTIVE SUB (ACTIVE NON MEM) = Current Dues Paying or Lifetime Donors Who Have NOT Signed the Certificate (Formerly Called "Subscriber")*

*TOTAL ACTIVE = Current Dues Paying or Lifetime Donor*

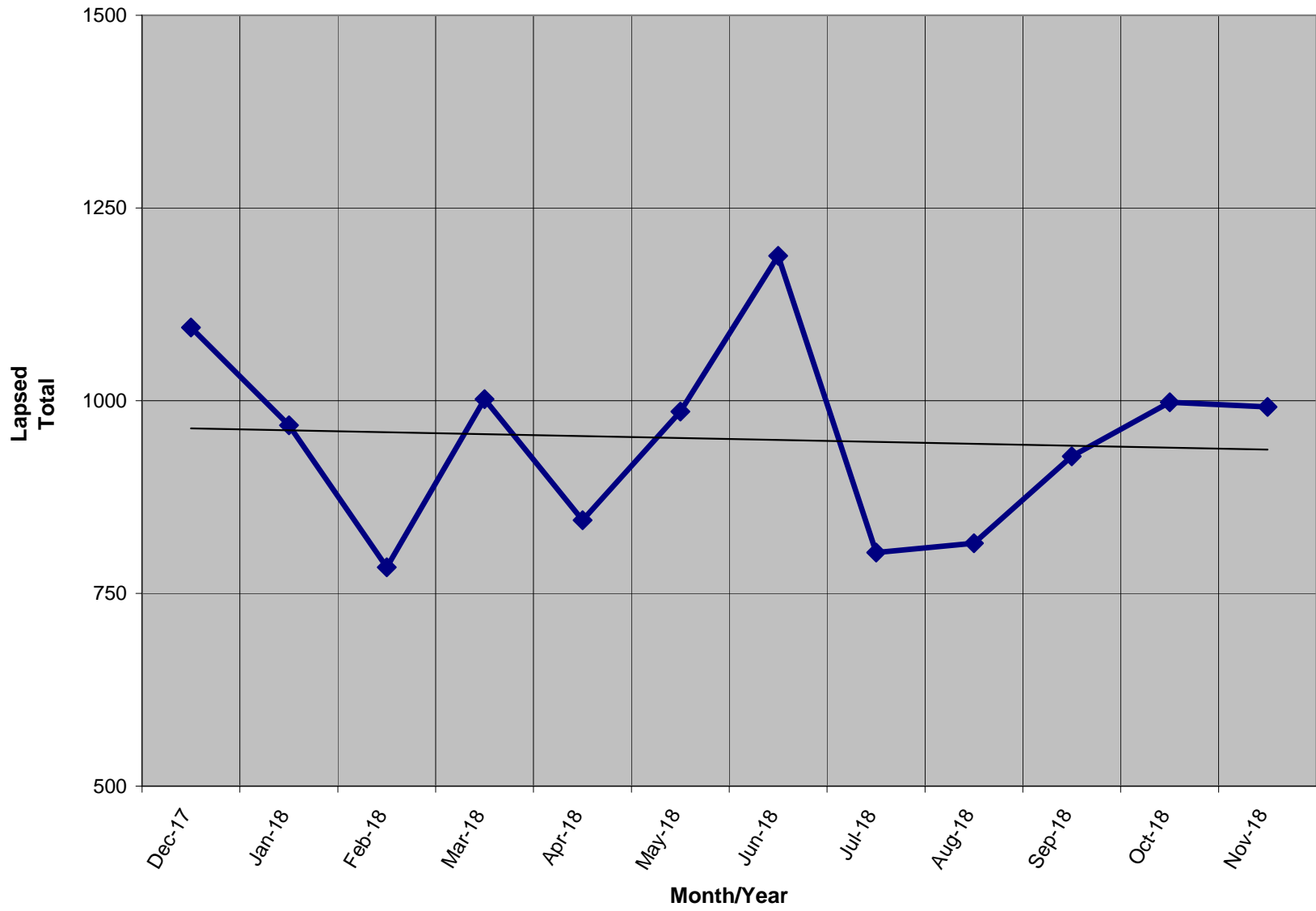
*BSM = By Law Definition of "Sustaining Member" and number used for delegate count*

*(Art 5-3: "Sustaining member" is any Party member who has given at least \$25 to the Party in the prior twelve months, or who is a life member.)*

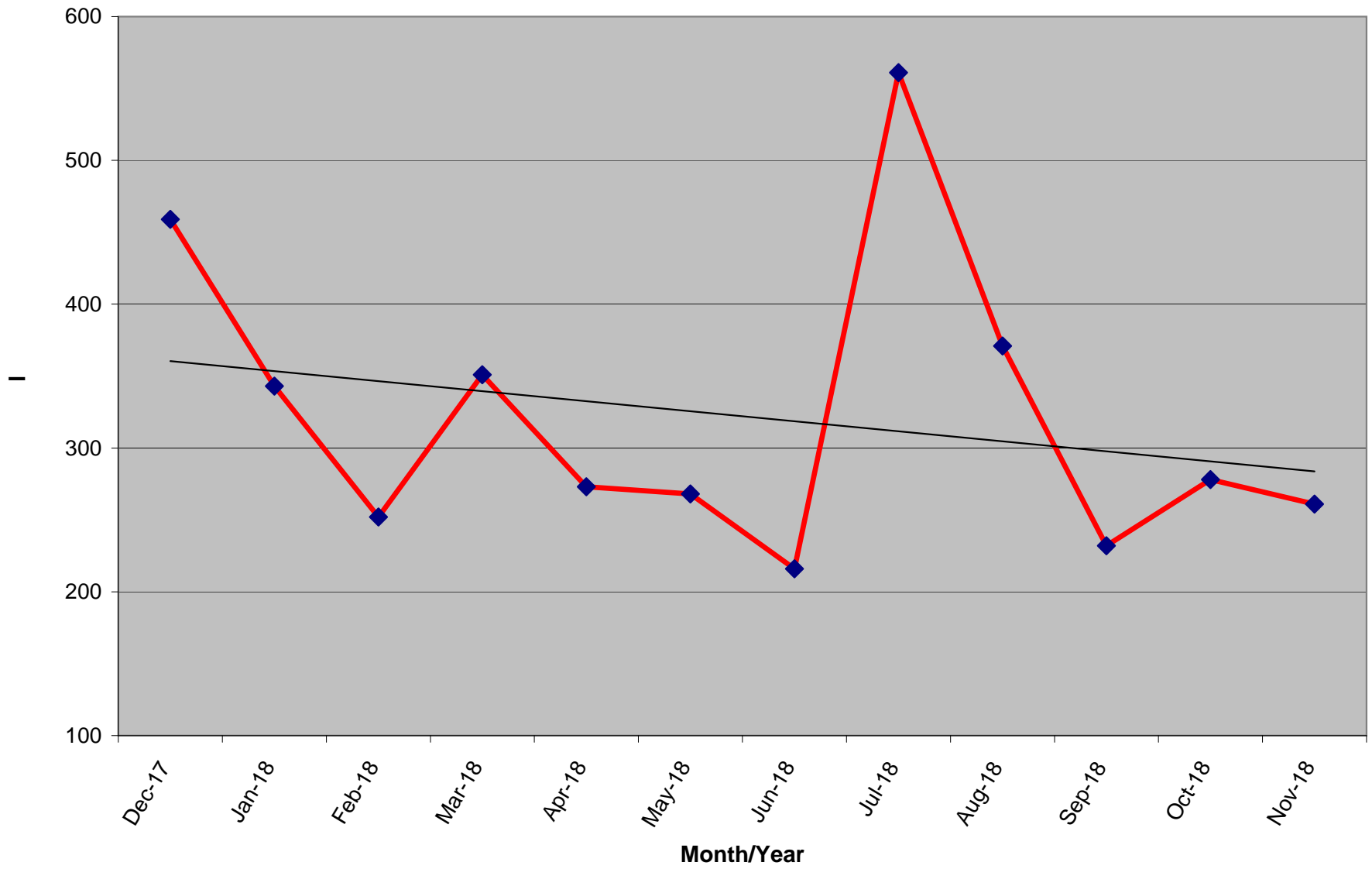
Active Donors - Past 12 Months



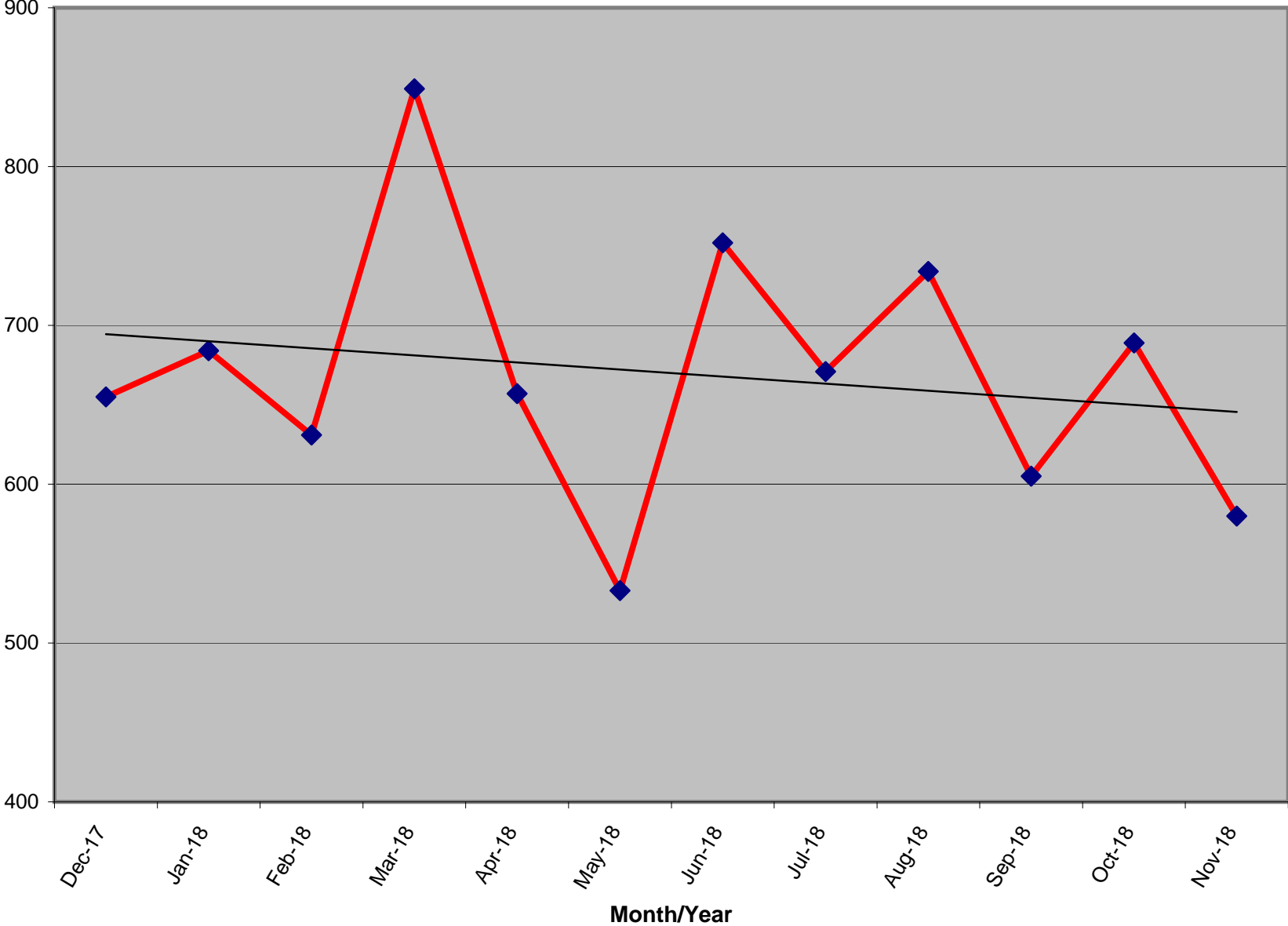
Lapsed - Dropped - Donors - Past 12 Months



New Donors Past 12 Months



Renew Donors - Past 12 Months



**% OF ACTIVE MEMBERS VS. REGISTERED LIBERTARIAN VOTERS BY STATE**

STATE	TI Reg Voters	Reg Lib	% Reg L to TI Reg	Total Active By State	Active to Registered	STATE	TI Reg Voters	Reg Lib	% Reg L to TI Reg	Total Active By State	Active to Registered
AK	520,646	7,593	1.46%	82	1.08%	MT	695,971	0	n/a	66	n/a
AL	3,303,122	0	n/a	210	n/a	NC	6,849,567	34,563	0.50%	404	1.17%
AR	1,744,141	348	0.02%	108	31.03%	ND	429,978	0	n/a	37	n/a
AZ	3,662,382	31,554	0.86%	346	1.10%	NE	1,195,069	13,012	1.09%	93	0.71%
CA *	18,854,829	141,368	0.75%	1,616	1.14%	NH	961,819	162	0.02%	184	113.58%
CO	3,219,953	36,911	1.15%	468	1.27%	NJ	5,778,406	8,874	0.15%	325	3.66%
CT ***	2,156,316	2,959	0.14%	163	5.51%	NM	1,220,056	7,792	0.64%	143	1.84%
DC	473,526	1,025	0.22%	40	3.90%	NV	1,468,671	14,322	0.98%	191	1.33%
DE	689,083	1,640	0.24%	51	3.11%	NY	11,546,694	6,502	0.06%	696	10.70%
FL **	13,694,743	31,682	0.23%	816	2.58%	OH	7,914,320	0	n/a	651	n/a
GA	6,443,457	0	n/a	462	n/a	OK ***	2,112,991	8,497	0.40%	176	2.07%
HI	716,458	0	n/a	59	n/a	OR	2,652,935	18,962	0.71%	162	0.85%
IA	1,955,058	9,331	0.48%	135	1.45%	PA ***	8,609,880	44,848	0.52%	612	1.36%
ID	801,151	6,482	0.81%	78	1.20%	RI	772,360	0	n/a	36	n/a
IL	8,780,685	0	n/a	528	n/a	SC	3,268,076	0	n/a	211	n/a
IN	4,355,147	0	n/a	407	n/a	SD	526,773	1,673	0.32%	46	2.75%
KS	1,611,223	13,746	0.85%	138	1.00%	TN	4,112,566	0	n/a	328	n/a
KY	3,346,095	8,250	0.25%	138	1.67%	TX	14,748,880	0	n/a	1,124	n/a
LA	2,972,024	14,569	0.49%	222	1.52%	UT	1,307,119	10,927	0.84%	106	0.97%
MA ***	4,574,967	15,787	0.35%	250	1.58%	VA	5,473,173	0	n/a	603	n/a
MD	3,903,599	20,894	0.54%	291	1.39%	VT	459,719	0	n/a	34	n/a
ME ***	1,028,602	5,554	0.54%	85	1.53%	WA	4,646,246	0	n/a	508	n/a
MI	7,347,955	0	n/a	510	n/a	WI	5,842,402	0	n/a	280	n/a
MN	3,268,360	0	n/a	212	n/a	WV	1,228,123	5,616	0.46%	69	1.23%
MO	4,123,266	0	n/a	252	n/a	WY	262,620	2,410	0.92%	43	1.78%
MS	2,044,713	0	n/a	98	n/a	XX	356,791	0	n/a	62	n/a
						Totals	200,032,706	527,853	0.55%	14,955	2.83%

Registration totals provided by Richard Winger as of 03/18 - \* CA & MA as of 09/18 \*\* FLA 08/18 \*\*\* OK/CT 10/18

**% OF ACTIVE MEMBERS VS. 2010 CENSUS POPULATION BY STATE**

STATE	2010 Census	TI Active By State	Active to Population
AK	710,231	82	0.0115%
AL	4,779,736	210	0.0044%
AR	2,915,918	108	0.0037%
AZ	6,392,017	346	0.0054%
CA	37,253,956	1,616	0.0043%
CO	5,029,196	468	0.0093%
CT	3,574,097	163	0.0046%
DC	601,723	40	0.0066%
DE	897,934	51	0.0057%
FL	18,801,310	816	0.0043%
GA	9,687,653	462	0.0048%
HI	1,360,301	59	0.0043%
IA	3,046,355	135	0.0044%
ID	1,567,582	78	0.0050%
IL	12,830,632	528	0.0041%
IN	6,483,802	407	0.0063%
KS	2,853,118	138	0.0048%
KY	4,339,367	138	0.0032%
LA	4,533,372	222	0.0049%
MA	6,547,629	250	0.0038%
MD	5,773,552	291	0.0050%
ME	1,328,361	85	0.0064%
MI	9,883,640	510	0.0052%
MN	5,303,925	212	0.0040%
MO	5,988,927	252	0.0042%
MS	2,967,297	98	0.0033%

**ACTIVE TO POPULATION BY RANK**

STATE	2010 Census	TI Active By State	Active to Population
MT	989,415	66	0.0067%
NC	9,535,483	404	0.0042%
ND	672,591	37	0.0055%
NE	1,826,341	93	0.0051%
NH	1,316,470	184	0.0140%
NJ	8,791,894	325	0.0037%
NM	2,059,179	143	0.0069%
NV	2,700,551	191	0.0071%
NY	19,378,102	696	0.0036%
OH	11,536,504	651	0.0056%
OK	3,751,351	176	0.0047%
OR	3,831,074	162	0.0042%
PA	12,702,379	612	0.0048%
RI	1,052,567	36	0.0034%
SC	4,625,364	211	0.0046%
SD	814,180	46	0.0056%
TN	6,346,105	328	0.0052%
TX	25,145,561	1,124	0.0045%
UT	2,763,885	106	0.0038%
VA	8,001,024	603	0.0075%
VT	625,741	34	0.0054%
WA	6,724,540	508	0.0076%
WI	5,686,986	280	0.0049%
WV	1,852,994	69	0.0037%
WY	563,626	43	0.0076%
Totals	308,745,538	14,893	0.0048%

STATE	Rank	TI Active By State	Active to Population
NH	1	184	0.0140%
AK	2	82	0.0115%
CO	3	468	0.0093%
WY	4	43	0.0076%
WA	5	508	0.0076%
VA	6	603	0.0075%
NV	7	191	0.0071%
NM	8	143	0.0069%
MT	9	66	0.0067%
DC	10	40	0.0066%
ME	11	85	0.0064%
IN	12	407	0.0063%
DE	13	51	0.0057%
SD	14	46	0.0056%
OH	15	651	0.0056%
ND	16	37	0.0055%
VT	17	34	0.0054%
AZ	18	346	0.0054%
TN	19	328	0.0052%
MI	20	510	0.0052%
NE	21	93	0.0051%
MD	22	291	0.0050%
ID	23	78	0.0050%
WI	24	280	0.0049%
LA	25	222	0.0049%
KS	26	138	0.0048%

STATE	Rank	TI Active By State	Active to Population
PA	27	612	0.0048%
GA	28	462	0.0048%
OK	29	176	0.0047%
SC	30	211	0.0046%
CT	31	163	0.0046%
TX	32	1,124	0.0045%
IA	33	135	0.0044%
AL	34	210	0.0044%
FL	35	816	0.0043%
CA	36	1,616	0.0043%
HI	37	59	0.0043%
NC	38	404	0.0042%
OR	39	162	0.0042%
MO	40	252	0.0042%
IL	41	528	0.0041%
MN	42	212	0.0040%
UT	43	106	0.0038%
MA	44	250	0.0038%
WV	45	69	0.0037%
AR	46	108	0.0037%
NJ	47	325	0.0037%
NY	48	696	0.0036%
RI	49	36	0.0034%
MS	50	98	0.0033%
KY	51	138	0.0032%
Totals		14,893	0.0048%

*\* 2010 US Census Figures - does not include PR or other territories or out of US ("XX" states)*