

Libertarian National Committee - Membership Report

"Donor" Totals - Sep-19

4 Year & 12 Month Comparison

	Dec-15	Dec-16	Dec-17	Dec-18	Sep-18	Oct-18	Nov-18	Dec-18	Jan-19	Feb-19	Mar-19	Apr-19	May-19	Jun-19	Jul-19	Aug-19	Sep-19
Active w-MEM	11184	18592	14445	14494	15134	15100	14955	14494	14278	14294	14271	14187	14224	14158	13895	13991	14232
Active w/out MEM	509	1814	553	514	528	531	525	514	496	503	502	501	486	480	479	441	436
Total Active Donors	11693	20406	14998	15008	15662	15631	15480	15008	14774	14797	14773	14688	14710	14638	14374	14432	14668
Percent Change					-0.58%	-0.20%	-0.97%	-3.05%	-1.56%	0.16%	-0.16%	-0.58%	0.15%	-0.49%	-1.80%	0.40%	1.64%
Lapsed/Drop MEM	909	1016	1072	1184	896	969	962	1184	1077	839	1050	871	926	856	1132	1080	732
Lapse w/out MEM	30	27	23	27	32	29	30	27	21	15	23	24	51	17	20	50	24
Lapsed/Drop Total	939	1043	1095	1211	928	998	992	1211	1098	854	1073	895	977	873	1152	1130	756
Percent Change					13.87%	7.54%	-0.60%	22.08%	-9.33%	-22.22%	25.64%	-16.59%	9.16%	-10.64%	31.96%	-1.91%	-33.10%
New Donors w-MEM	103	321	444	159	215	265	253	159	199	227	230	180	218	180	219	353	403
New w/out MEM	6	11	15	14	17	13	8	14	3	2	15	15	14	5	17	10	9
New Total	109	332	459	173	232	278	261	173	202	229	245	195	232	185	236	363	412
Percent Change					-37.47%	19.83%	-6.12%	-33.72%	16.76%	13.37%	6.99%	-20.41%	18.97%	-20.26%	27.57%	53.81%	13.50%
Renewed w-MEM	792	723	651	564	596	670	564	564	662	628	797	607	745	610	650	823	570
Renewed w/out MEM	20	8	4	2	9	19	16	2	0	20	7	8	22	6	2	2	10
Total Renewals	812	731	655	566	605	689	580	566	662	648	804	615	767	616	652	825	580
Percent Change					-17.57%	13.88%	-15.82%	-2.41%	16.96%	-2.11%	24.07%	-23.51%	24.72%	-19.69%	5.84%	26.53%	-29.70%
Total "MEM" *	135197	145814	138815	137321	136720	136952	137205	137321	137535	137726	137974	138141	138361	138536	138757	139127	139520
Percent Change					0.14%	0.17%	0.18%	0.08%	0.16%	0.14%	0.18%	0.12%	0.16%	0.13%	0.16%	0.27%	0.28%
Total "LIFETIME" *	2458	2571	2618	2652	2643	2643	2646	2652	2652	2658	2668	2674	2679	2686	2687	2689	2698
Total "BSM"	11045	19003	14668	14639	15163	15150	15016	14639	14385	14372	14327	14324	14288	14208	13934	13963	14139

Last Year vs. This Year

	Sep-18	Sep-19	Change	12 Mo Ave		
Active w-MEM	15134	14232	-5.96%	14340	<u>Active Donors w-MEM =</u>	14232
Active w/out MEM	528	436	-17.42%	491	<u>Lapsed & Zero Dues MEM =</u>	125288
Total Active Donors	15662	14668	-6.35%	14831	<u>Total "MEM" w-Signed Certificate =</u>	<u>139520</u>
Lapsed/Dropped	928	756	-18.53%	1001	<u>Member Signed Certificate =</u>	<u>"MEM"</u>
New Donors	232	412	77.59%	251	<u>Total "BSM" =</u>	<u>14139</u>
Renewals	605	580	-4.13%	667	<u>Bylaws Defined Sustaining Member =</u>	<u>"BSM"</u>

Sep-19 MEMBERSHIP BY STATE --- ACTIVE AND NON ACTIVE

SUSTAINING MEMBERSHIP STATE RANKINGS - "BSM"

STATE	TOTAL "MEM"	ACTIVE "MEM"	ACTIVE "SUB"	TOTAL "ACTIVE"	TOTAL "BSM"	STATE	TOTAL "MEM"	ACTIVE "MEM"	ACTIVE "SUB"	TOTAL "ACTIVE"	TOTAL "BSM"
AK	675	71	1	72	70	MT	581	64	2	66	63
AL	1871	198	4	202	192	NC	3587	387	6	393	387
AR	939	95	2	97	96	ND	253	31	5	36	30
AZ	3317	344	10	354	342	NE	674	86	1	87	86
CA	18689	1531	58	1589	1525	NH	1461	167	3	170	169
CO	3949	477	8	485	473	NJ	3038	295	9	304	291
CT	1499	160	5	165	162	NM	1202	143	2	145	145
DC	365	38	2	40	37	NV	1930	187	13	200	187
DE	421	44	4	48	43	NY	5147	719	24	743	705
FL	8450	804	32	836	801	OH	5192	655	10	665	656
GA	5908	409	11	420	411	OK	1140	149	0	149	146
HI	545	50	4	54	49	OR	2247	166	13	179	163
IA	1095	120	3	123	116	PA	6011	604	14	618	596
ID	820	67	1	68	65	RI	315	32	2	34	32
IL	4475	476	13	489	478	SC	2045	235	3	238	233
IN	3439	379	8	387	377	SD	283	44	1	45	43
KS	1202	121	0	121	121	TN	2782	343	3	346	343
KY	1256	129	5	134	126	TX	9837	1078	36	1114	1076
LA	1239	169	3	172	168	UT	1272	121	4	125	117
MA	2822	244	9	253	241	VA	4873	536	13	549	529
MD	2432	278	15	293	279	VT	403	36	3	39	35
ME	832	84	1	85	83	WA	4666	468	16	484	467
MI	5272	443	13	456	442	WI	2146	240	10	250	240
MN	2106	210	6	216	209	WV	626	65	0	65	62
MO	2400	234	9	243	232	WY	335	41	0	41	40
MS	751	90	4	94	91	XX	705	75	12	87	69

State	Total BSM	Rank	State	Total BSM	Rank
CA	1525	1	LA	168	27
TX	1076	2	OR	163	28
FL	801	3	CT	162	29
NY	705	4	OK	146	30
OH	656	5	NM	145	31
PA	596	6	KY	126	32
VA	529	7	KS	121	33
IL	478	8	UT	117	34
CO	473	9	IA	116	35
WA	467	10	AR	96	36
MI	442	11	MS	91	37
GA	411	12	NE	86	38
NC	387	13	ME	83	39
IN	377	14	AK	70	40
TN	343	15	ID	65	41
AZ	342	16	MT	63	42
NJ	291	17	WV	62	43
MD	279	18	HI	49	44
MA	241	19	DE	43	45
WI	240	20	SD	43	46
SC	233	21	WY	40	47
MO	232	22	DC	37	48
MN	209	23	VT	35	49
AL	192	24	RI	32	50
NV	187	25	ND	30	51
NH	169	26	XX	69	52
			Total:	14139	

TOTAL "MEM"	ACTIVE "MEM"	ACTIVE "SUB"	TOTAL "ACTIVE"	TOTAL "BSM"
TOTALS	139520	14232	436	14668

DEFINITIONS: MEM = Member Signed Certificate

Total MEM = Total # Constituents Per State w-Member Signed Certificate

ACTIVE MEM = Current Dues Paying or Lifetime Donor w-Signed Certificate

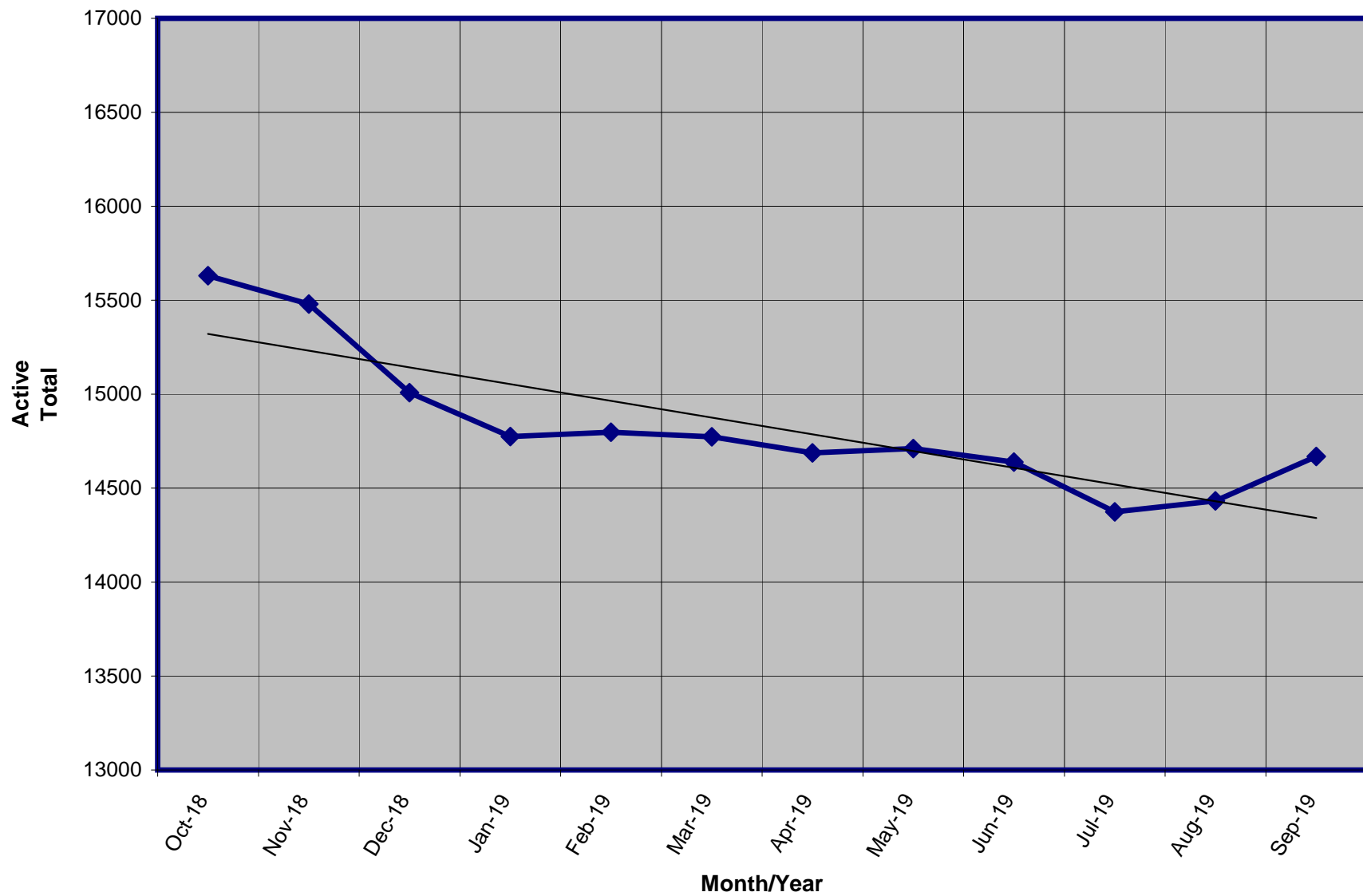
ACTIVE SUB (ACTIVE NON MEM) = Current Dues Paying or Lifetime Donors Who Have NOT Signed the Certificate (Formerly Called "Subscriber")

TOTAL ACTIVE = Current Dues Paying or Lifetime Donor

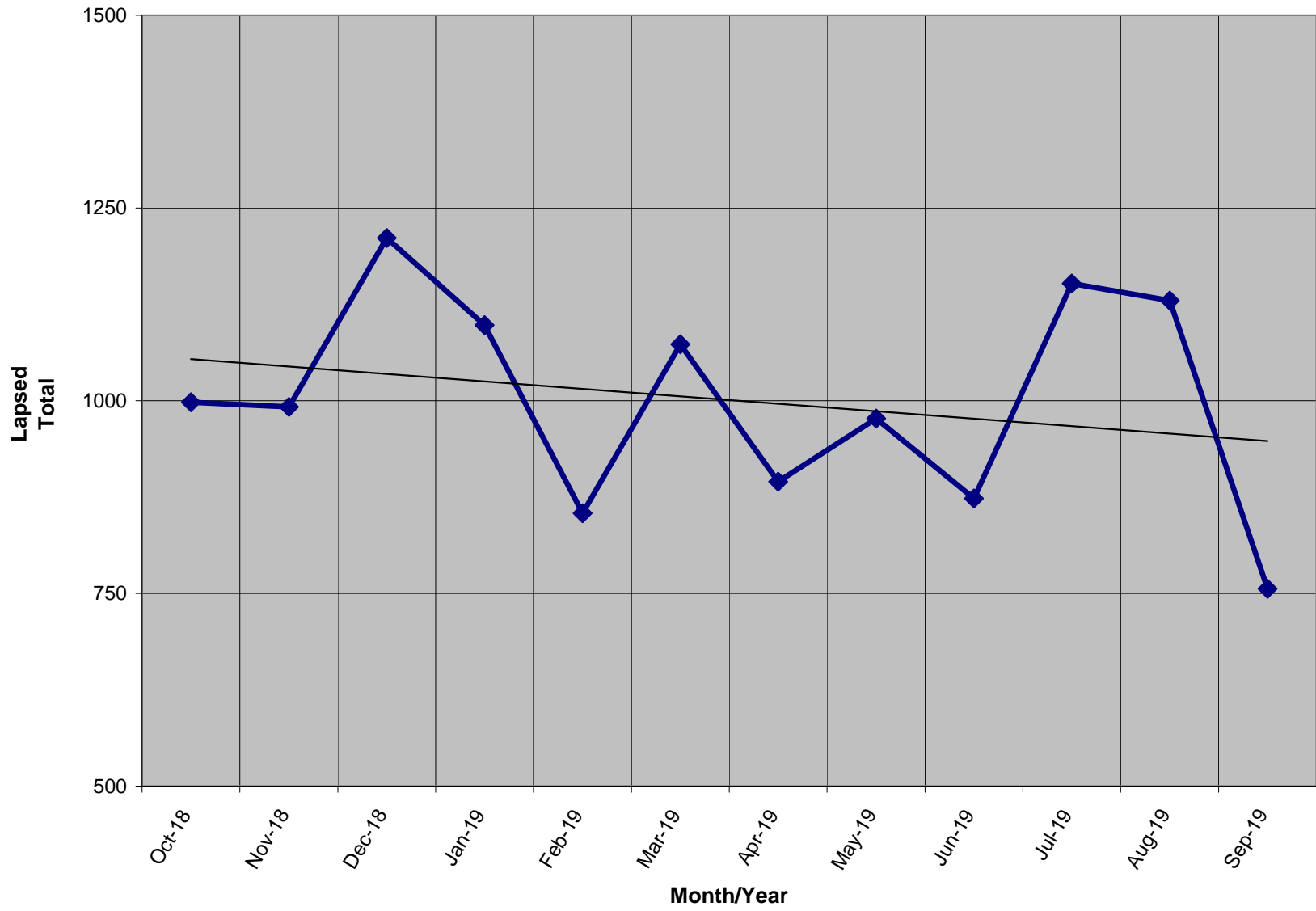
BSM = By Law Definition of "Sustaining Member" and number used for delegate count

(Art 5-3: "Sustaining member" is any Party member who has given at least \$25 to the Party in the prior twelve months, or who is a life member.)

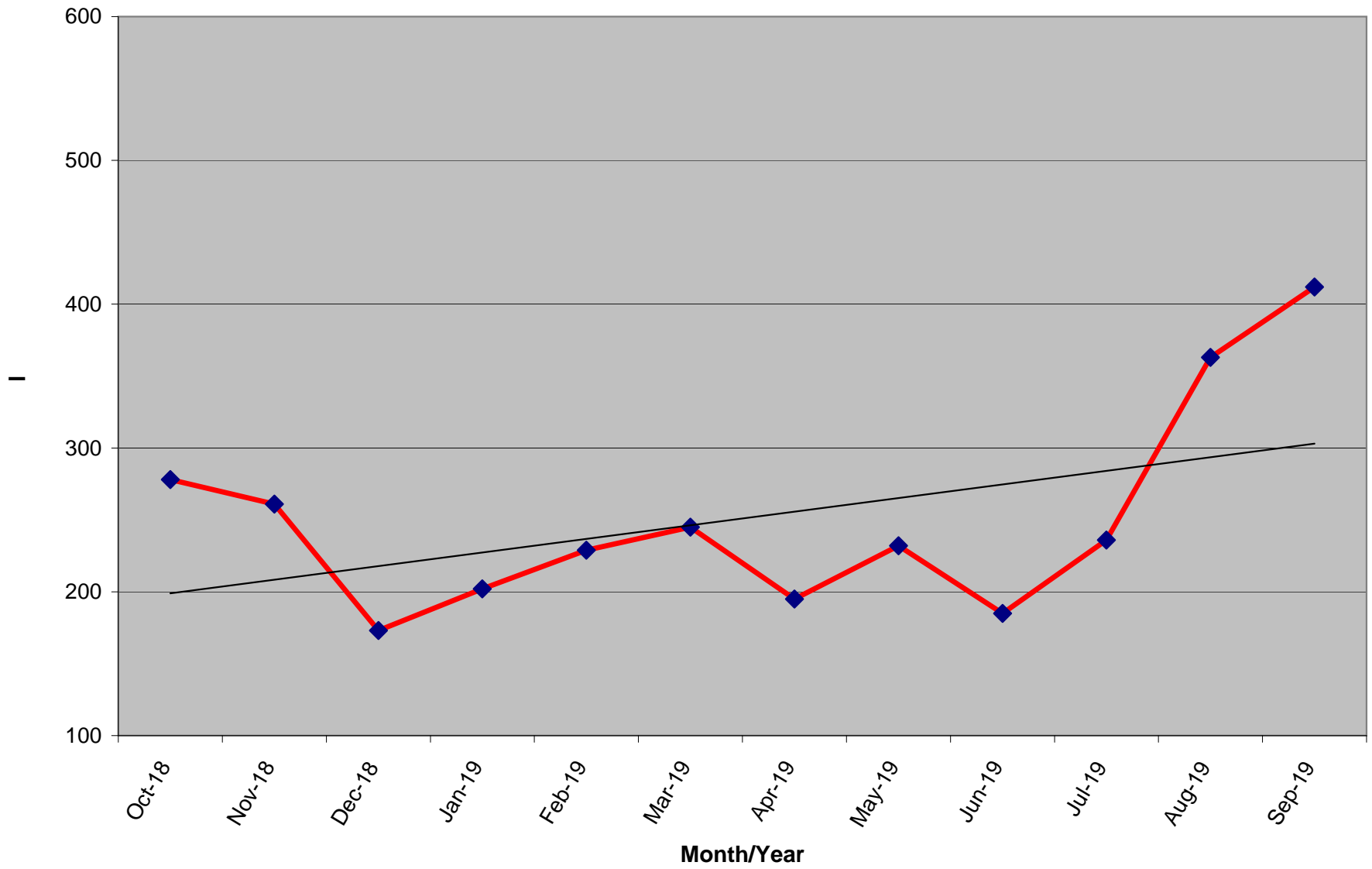
Active Donors - Past 12 Months



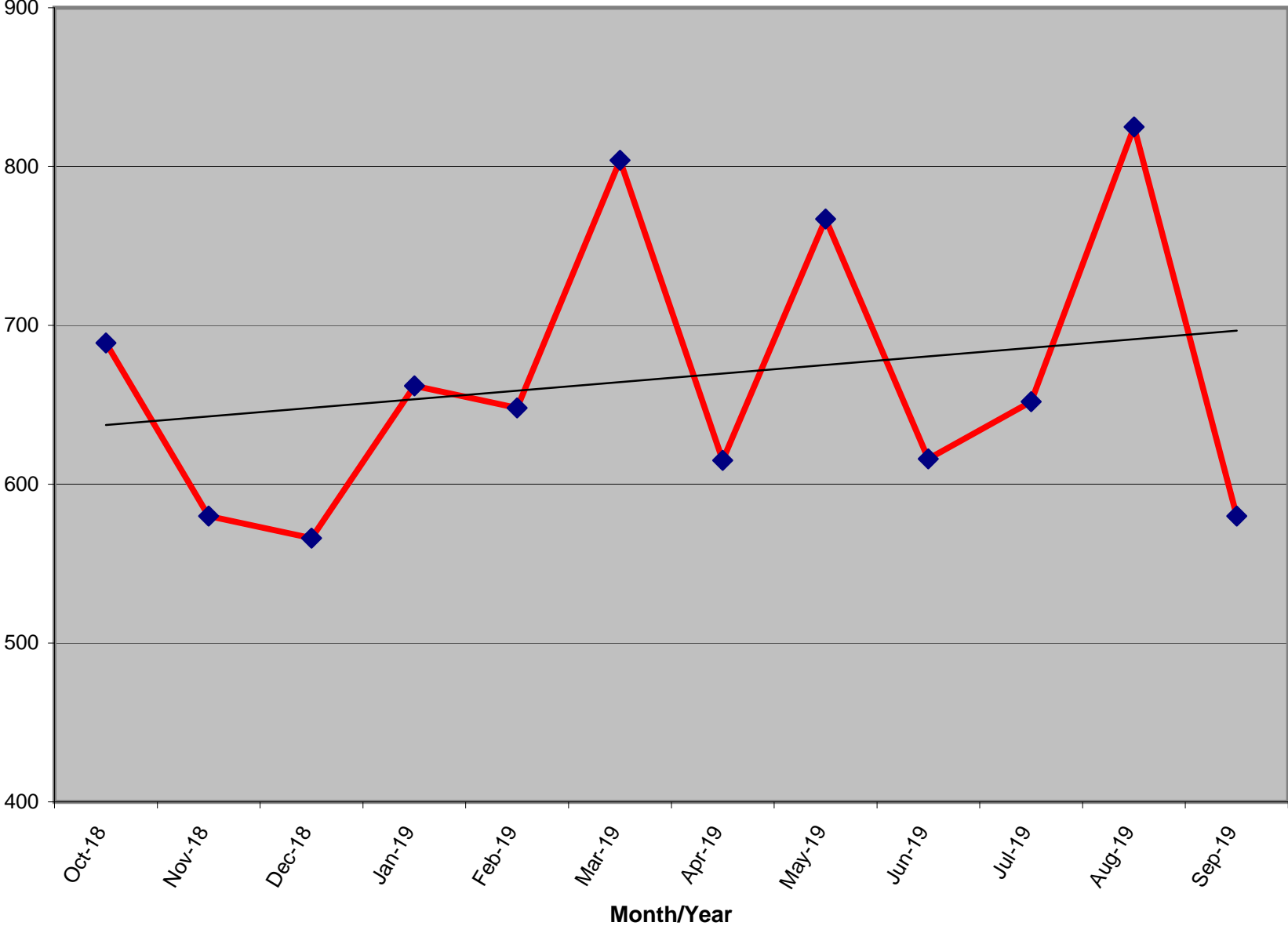
Lapsed - Dropped - Donors - Past 12 Months



New Donors Past 12 Months



Renew Donors - Past 12 Months



% OF ACTIVE MEMBERS VS. REGISTERED LIBERTARIAN VOTERS BY STATE

STATE	TI Reg Voters	Reg Lib	% Reg L to TI Reg	Total Active By State	Active to Registered
AK	520,646	7,593	1.46%	71	0.94%
AL	3,303,122	0	n/a	198	n/a
AR	1,744,141	348	0.02%	95	27.30%
AZ	3,774,016	32,056	0.85%	344	1.07%
CA	25,259,865	153,348	0.61%	1,531	1.00%
CO	3,219,953	36,911	1.15%	477	1.29%
CT	2,156,316	2,959	0.14%	160	5.41%
DC	473,526	1,025	0.22%	38	3.71%
DE	715,019	1,640	0.23%	44	2.68%
FL	13,694,743	31,682	0.23%	804	2.54%
GA	6,443,457	0	n/a	409	n/a
HI	716,458	0	n/a	50	n/a
IA	1,955,058	9,331	0.48%	120	1.29%
ID	801,151	6,482	0.81%	67	1.03%
IL	8,780,685	0	n/a	476	n/a
IN	4,355,147	0	n/a	379	n/a
KS	1,611,223	13,746	0.85%	121	0.88%
KY	3,346,095	8,250	0.25%	129	1.56%
LA	2,972,024	14,569	0.49%	169	1.16%
MA	4,574,967	15,787	0.35%	244	1.55%
MD	3,903,599	20,894	0.54%	278	1.33%
ME	1,028,602	5,554	0.54%	84	1.51%
MI	7,347,955	0	n/a	443	n/a
MN	3,268,360	0	n/a	210	n/a
MO	4,123,266	0	n/a	234	n/a
MS	2,044,713	0	n/a	90	n/a

Registration totals provided by Richard Winger as of 06/17

STATE	TI Reg Voters	Reg Lib	% Reg L to TI Reg	Total Active By State	Active to Registered
MT	695,971	0	n/a	64	n/a
NC	6,571,602	36,010	0.55%	387	1.07%
ND	429,978	0	n/a	31	n/a
NE	1,203,872	15,029	1.25%	86	0.57%
NH	961,819	162	0.02%	167	103.09%
NJ	5,778,406	8,874	0.15%	295	3.32%
NM	1,220,056	7,792	0.64%	143	1.84%
NV	1,543,822	15,486	1.00%	187	1.21%
NY	12,695,762	9,757	0.08%	719	7.37%
OH	7,914,320	0	n/a	655	n/a
OK	2,112,991	8,497	0.40%	149	1.75%
OR	2,652,935	18,962	0.71%	166	0.88%
PA	8,609,880	44,848	0.52%	604	1.35%
RI	772,360	0	n/a	32	n/a
SC	3,268,076	0	n/a	235	n/a
SD	550,529	1,893	0.34%	44	2.32%
TN	4,112,566	0	n/a	343	n/a
TX	14,748,880	0	n/a	1,078	n/a
UT	1,446,211	15,393	1.06%	121	0.79%
VA	5,473,173	0	n/a	536	n/a
VT	459,719	0	n/a	36	n/a
WA	4,646,246	0	n/a	468	n/a
WI	5,842,402	0	n/a	240	n/a
WV	1,228,123	5,616	0.46%	65	1.16%
WY	262,620	2,410	0.92%	41	1.70%
XX	356,791	0	n/a	75	n/a
Totals	207,693,217	552,904	0.56%	14,232	2.57%

% OF ACTIVE MEMBERS VS. 2010 CENSUS POPULATION BY STATE

STATE	2010 Census	TI Active By State	Active to Population
AK	710,231	71	0.0100%
AL	4,779,736	198	0.0041%
AR	2,915,918	95	0.0033%
AZ	6,392,017	344	0.0054%
CA	37,253,956	1,531	0.0041%
CO	5,029,196	477	0.0095%
CT	3,574,097	160	0.0045%
DC	601,723	38	0.0063%
DE	897,934	44	0.0049%
FL	18,801,310	804	0.0043%
GA	9,687,653	409	0.0042%
HI	1,360,301	50	0.0037%
IA	3,046,355	120	0.0039%
ID	1,567,582	67	0.0043%
IL	12,830,632	476	0.0037%
IN	6,483,802	379	0.0058%
KS	2,853,118	121	0.0042%
KY	4,339,367	129	0.0030%
LA	4,533,372	169	0.0037%
MA	6,547,629	244	0.0037%
MD	5,773,552	278	0.0048%
ME	1,328,361	84	0.0063%
MI	9,883,640	443	0.0045%
MN	5,303,925	210	0.0040%
MO	5,988,927	234	0.0039%
MS	2,967,297	90	0.0030%

ACTIVE TO POPULATION BY RANK

STATE	2010 Census	TI Active By State	Active to Population
MT	989,415	64	0.0065%
NC	9,535,483	387	0.0041%
ND	672,591	31	0.0046%
NE	1,826,341	86	0.0047%
NH	1,316,470	167	0.0127%
NJ	8,791,894	295	0.0034%
NM	2,059,179	143	0.0069%
NV	2,700,551	187	0.0069%
NY	19,378,102	719	0.0037%
OH	11,536,504	655	0.0057%
OK	3,751,351	149	0.0040%
OR	3,831,074	166	0.0043%
PA	12,702,379	604	0.0048%
RI	1,052,567	32	0.0030%
SC	4,625,364	235	0.0051%
SD	814,180	44	0.0054%
TN	6,346,105	343	0.0054%
TX	25,145,561	1,078	0.0043%
UT	2,763,885	121	0.0044%
VA	8,001,024	536	0.0067%
VT	625,741	36	0.0058%
WA	6,724,540	468	0.0070%
WI	5,686,986	240	0.0042%
WV	1,852,994	65	0.0035%
WY	563,626	41	0.0073%
Totals	308,745,538	14,157	0.0046%

STATE	Rank	TI Active By State	Active to Population
NH	1	167	0.0127%
AK	2	71	0.0100%
CO	3	477	0.0095%
WY	4	41	0.0073%
WA	5	468	0.0070%
NM	6	143	0.0069%
NV	7	187	0.0069%
VA	8	536	0.0067%
MT	9	64	0.0065%
ME	10	84	0.0063%
DC	11	38	0.0063%
IN	12	379	0.0058%
VT	13	36	0.0058%
OH	14	655	0.0057%
TN	15	343	0.0054%
SD	16	44	0.0054%
AZ	17	344	0.0054%
SC	18	235	0.0051%
DE	19	44	0.0049%
MD	20	278	0.0048%
PA	21	604	0.0048%
NE	22	86	0.0047%
ND	23	31	0.0046%
MI	24	443	0.0045%
CT	25	160	0.0045%
UT	26	121	0.0044%

STATE	Rank	TI Active By State	Active to Population
OR	27	166	0.0043%
TX	28	1,078	0.0043%
FL	29	804	0.0043%
ID	30	67	0.0043%
KS	31	121	0.0042%
GA	32	409	0.0042%
WI	33	240	0.0042%
AL	34	198	0.0041%
CA	35	1,531	0.0041%
NC	36	387	0.0041%
OK	37	149	0.0040%
MN	38	210	0.0040%
IA	39	120	0.0039%
MO	40	234	0.0039%
LA	41	169	0.0037%
MA	42	244	0.0037%
NY	43	719	0.0037%
IL	44	476	0.0037%
HI	45	50	0.0037%
WV	46	65	0.0035%
NJ	47	295	0.0034%
AR	48	95	0.0033%
RI	49	32	0.0030%
MS	50	90	0.0030%
KY	51	129	0.0030%
Totals		14,157	0.0046%

* 2010 US Census Figures - does not include PR or other territories or out of US ("XX" states)