

**Libertarian National Committee - Membership Report**

**"Donor" Totals - Jan-18**

**4 Year & 12 Month Comparison**

	Dec-14	Dec-15	Dec-16	Dec-17	Jan-17	Feb-17	Mar-17	Apr-17	May-17	Jun-17	Jul-17	Aug-17	Sep-17	Oct-17	Nov-17	Dec-17	Jan-18
Active w-MEM	12053	11184	18592	14445	18908	18715	18334	17843	16652	16065	15110	14321	14411	14319	14422	14445	14506
Active w/out MEM	747	509	1814	553	1806	1838	1862	1829	1655	1424	1185	710	581	550	557	553	551
<b>Total Active Donors</b>	<b>12800</b>	<b>11693</b>	<b>20406</b>	<b>14998</b>	<b>20714</b>	<b>20553</b>	<b>20196</b>	<b>19672</b>	<b>18307</b>	<b>17489</b>	<b>16295</b>	<b>15031</b>	<b>14992</b>	<b>14869</b>	<b>14979</b>	<b>14998</b>	<b>15057</b>
<b>Percent Change</b>	<b>-12.55%</b>	<b>-8.65%</b>	<b>74.51%</b>	<b>0.13%</b>	<b>1.51%</b>	<b>-0.78%</b>	<b>-1.74%</b>	<b>-2.59%</b>	<b>-6.94%</b>	<b>-4.47%</b>	<b>-6.83%</b>	<b>-7.76%</b>	<b>-0.26%</b>	<b>-0.82%</b>	<b>0.74%</b>	<b>0.13%</b>	<b>0.39%</b>
Lapsed/Drop MEM	1733	909	1016	1072	672	831	1533	1314	1995	1844	1626	1659	886	1122	837	1072	948
Lapse w/out MEM	203	30	27	23	25	34	32	50	206	270	254	499	166	64	24	23	20
<b>Lapsed/Drop Total</b>	<b>1936</b>	<b>939</b>	<b>1043</b>	<b>1095</b>	<b>697</b>	<b>865</b>	<b>1565</b>	<b>1364</b>	<b>2201</b>	<b>2114</b>	<b>1880</b>	<b>2158</b>	<b>1052</b>	<b>1186</b>	<b>861</b>	<b>1095</b>	<b>968</b>
<b>Percent Change</b>				<b>27.18%</b>	<b>-33.17%</b>	<b>24.10%</b>	<b>80.92%</b>	<b>-12.84%</b>	<b>61.36%</b>	<b>-3.95%</b>	<b>-11.07%</b>	<b>14.79%</b>	<b>-51.25%</b>	<b>12.74%</b>	<b>-27.40%</b>	<b>27.18%</b>	<b>-11.60%</b>
New Donors w-MEM	110	103	321	444	481	299	386	262	307	428	354	289	297	313	322	444	331
New w/out MEM	6	6	11	15	14	13	47	14	27	21	7	10	14	13	18	15	12
<b>New Total</b>	<b>116</b>	<b>109</b>	<b>332</b>	<b>459</b>	<b>495</b>	<b>312</b>	<b>433</b>	<b>276</b>	<b>334</b>	<b>449</b>	<b>361</b>	<b>299</b>	<b>311</b>	<b>326</b>	<b>340</b>	<b>459</b>	<b>343</b>
<b>Percent Change</b>				<b>35.00%</b>	<b>49.10%</b>	<b>-36.97%</b>	<b>38.78%</b>	<b>-36.26%</b>	<b>21.01%</b>	<b>34.43%</b>	<b>-19.60%</b>	<b>-17.17%</b>	<b>4.01%</b>	<b>4.82%</b>	<b>4.29%</b>	<b>35.00%</b>	<b>-25.27%</b>
Renewed w-MEM	729	792	723	651	507	339	766	561	497	829	317	581	679	717	618	651	678
Renewed w/out MEM	14	20	8	4	3	53	9	3	5	18	8	14	23	20	13	4	6
<b>Total Renewals</b>	<b>743</b>	<b>812</b>	<b>731</b>	<b>655</b>	<b>510</b>	<b>392</b>	<b>775</b>	<b>564</b>	<b>502</b>	<b>847</b>	<b>325</b>	<b>595</b>	<b>702</b>	<b>737</b>	<b>631</b>	<b>655</b>	<b>684</b>
<b>Percent Change</b>				<b>3.80%</b>	<b>-30.23%</b>	<b>-23.14%</b>	<b>97.70%</b>	<b>-27.23%</b>	<b>-10.99%</b>	<b>68.73%</b>	<b>-61.63%</b>	<b>83.08%</b>	<b>17.98%</b>	<b>4.99%</b>	<b>-14.38%</b>	<b>3.80%</b>	<b>4.43%</b>
<b>Total "MEM" *</b>	<b>133400</b>	<b>135197</b>	<b>145814</b>	<b>138815</b>	<b>145814</b>	<b>146350</b>	<b>146869</b>	<b>147222</b>	<b>136069</b>	<b>136362</b>	<b>136819</b>	<b>137174</b>	<b>137451</b>	<b>137779</b>	<b>138083</b>	<b>138815</b>	<b>134464 *</b>
<b>Percent Change</b>	<b>2.22%</b>	<b>1.35%</b>	<b>7.85%</b>	<b>0.53%</b>	<b>0.25%</b>	<b>0.37%</b>	<b>0.35%</b>	<b>0.24%</b>	<b>-7.58%</b>	<b>0.22%</b>	<b>0.34%</b>	<b>0.26%</b>	<b>0.20%</b>	<b>0.24%</b>	<b>0.22%</b>	<b>0.53%</b>	<b>-3.13%</b>
<b>Total "LIFETIME" *</b>	<b>2446</b>	<b>2458</b>	<b>2571</b>	<b>2618</b>	<b>2571</b>	<b>2574</b>	<b>2577</b>	<b>2580</b>	<b>2588</b>	<b>2596</b>	<b>2596</b>	<b>2603</b>	<b>2605</b>	<b>2610</b>	<b>2614</b>	<b>2618</b>	<b>2567 *</b>
<b>Total "BSM"</b>	<b>12526</b>	<b>11045</b>	<b>19003</b>	<b>14668</b>	<b>19003</b>	<b>19293</b>	<b>19152</b>	<b>18864</b>	<b>18399</b>	<b>17301</b>	<b>16622</b>	<b>15706</b>	<b>14700</b>	<b>14504</b>	<b>14426</b>	<b>14668</b>	<b>14646</b>

\* Note: 01/18 Drop in Total Mem & TL Lifetime is result of PNCOA & Death Record append of 160k national records resulting in about 6k newly identified deceased effecting 80+ "active" record.

**Last Year vs. This Year**

	Jan-17	Jan-18	Change	12 Mo Ave	Active Donors w-MEM =	14506
Active w-MEM	18908	14506	-23.28%	15762	<b>Lapsed &amp; Zero Dues MEM =</b>	119958
Active w/out MEM	1806	551	-69.49%	1108	<b>Total "MEM" w-Signed Certificate =</b>	134464
<b>Total Active Donors</b>	<b>20714</b>	<b>15057</b>	<b>-27.31%</b>	<b>16870</b>	<b>Member Signed Certificate =</b>	<b>"MEM"</b>
Lapsed/Dropped	697	968	<b>38.88%</b>	1442	<b>Total "BSM" =</b>	14646
New Donors	495	343	<b>-30.71%</b>	354	<b>Bylaws Defined Sustaining Member =</b>	<b>"BSM"</b>
Renewals	510	684	<b>34.12%</b>	617		

Jan-18 MEMBERSHIP BY STATE --- ACTIVE AND NON ACTIVE

SUSTAINING MEMBERSHIP STATE RANKINGS - "BSM"

STATE	TOTAL "MEM"	ACTIVE "MEM"	ACTIVE "SUB"	TOTAL "ACTIVE"	TOTAL "BSM"	STATE	TOTAL "MEM"	ACTIVE "MEM"	ACTIVE "SUB"	TOTAL "ACTIVE"	TOTAL "BSM"
AK	672	89	1	90	89	MT	559	82	2	84	81
AL	1764	204	9	213	207	NC	3395	383	18	401	384
AR	885	97	2	99	96	ND	238	42	1	43	41
AZ	3148	320	13	333	324	NE	650	96	2	98	96
CA	18572	1563	78	1641	1579	NH	1397	174	6	180	177
CO	3780	474	12	486	477	NJ	2969	295	7	302	301
CT	1450	161	7	168	161	NM	1162	130	2	132	131
DC	379	40	1	41	42	NV	1864	168	10	178	169
DE	395	47	0	47	47	NY	4928	661	29	690	659
FL	8118	777	40	817	791	OH	4923	592	21	613	598
GA	5747	445	9	454	449	OK	1059	150	2	152	149
HI	525	49	4	53	52	OR	2191	168	17	185	163
IA	1050	137	2	139	139	PA	5793	606	14	620	612
ID	777	67	2	69	66	RI	301	29	0	29	29
IL	4362	511	17	528	514	SC	1919	236	3	239	240
IN	3317	412	13	425	417	SD	271	43	2	45	43
KS	1168	124	3	127	129	TN	2590	365	7	372	372
KY	1189	135	12	147	137	TX	9290	1063	43	1106	1071
LA	1178	227	5	232	231	UT	1188	99	4	103	99
MA	2750	246	12	258	250	VA	4762	623	21	644	640
MD	2346	286	13	299	292	VT	396	35	3	38	36
ME	795	80	5	85	81	WA	4493	486	23	509	488
MI	5080	491	10	501	496	WI	2051	276	10	286	279
MN	2032	207	6	213	212	WV	589	61	0	61	58
MO	2285	247	11	258	250	WY	319	33	1	34	33
MS	712	99	5	104	101	XX	691	75	11	86	68

State	Total BSM	Rank	State	Total BSM	Rank
CA	1579	1	NV	169	27
TX	1071	2	OR	163	28
FL	791	3	CT	161	29
NY	659	4	OK	149	30
VA	640	5	IA	139	31
PA	612	6	KY	137	32
OH	598	7	NM	131	33
IL	514	8	KS	129	34
MI	496	9	MS	101	35
WA	488	10	UT	99	36
CO	477	11	AR	96	37
GA	449	12	NE	96	38
IN	417	13	AK	89	39
NC	384	14	ME	81	40
TN	372	15	MT	81	41
AZ	324	16	ID	66	42
NJ	301	17	WV	58	43
MD	292	18	HI	52	44
WI	279	19	DE	47	45
MA	250	20	SD	43	46
MO	250	21	DC	42	47
SC	240	22	ND	41	48
LA	231	23	VT	36	49
MN	212	24	WY	33	50
AL	207	25	RI	29	51
NH	177	26	XX	68	52
			Total:	14646	

TOTAL	ACTIVE	ACTIVE	TOTAL	TOTAL
"MEM"	"MEM"	"SUB"	"ACTIVE"	"BSM"
<b>TOTALS</b>	<b>134464</b>	<b>14506</b>	<b>551</b>	<b>15057</b>

DEFINITIONS: MEM = Member Signed Certificate

Total MEM = Total # Constituents Per State w-Member Signed Certificate

ACTIVE MEM = Current Dues Paying or Lifetime Donor w-Signed Certificate

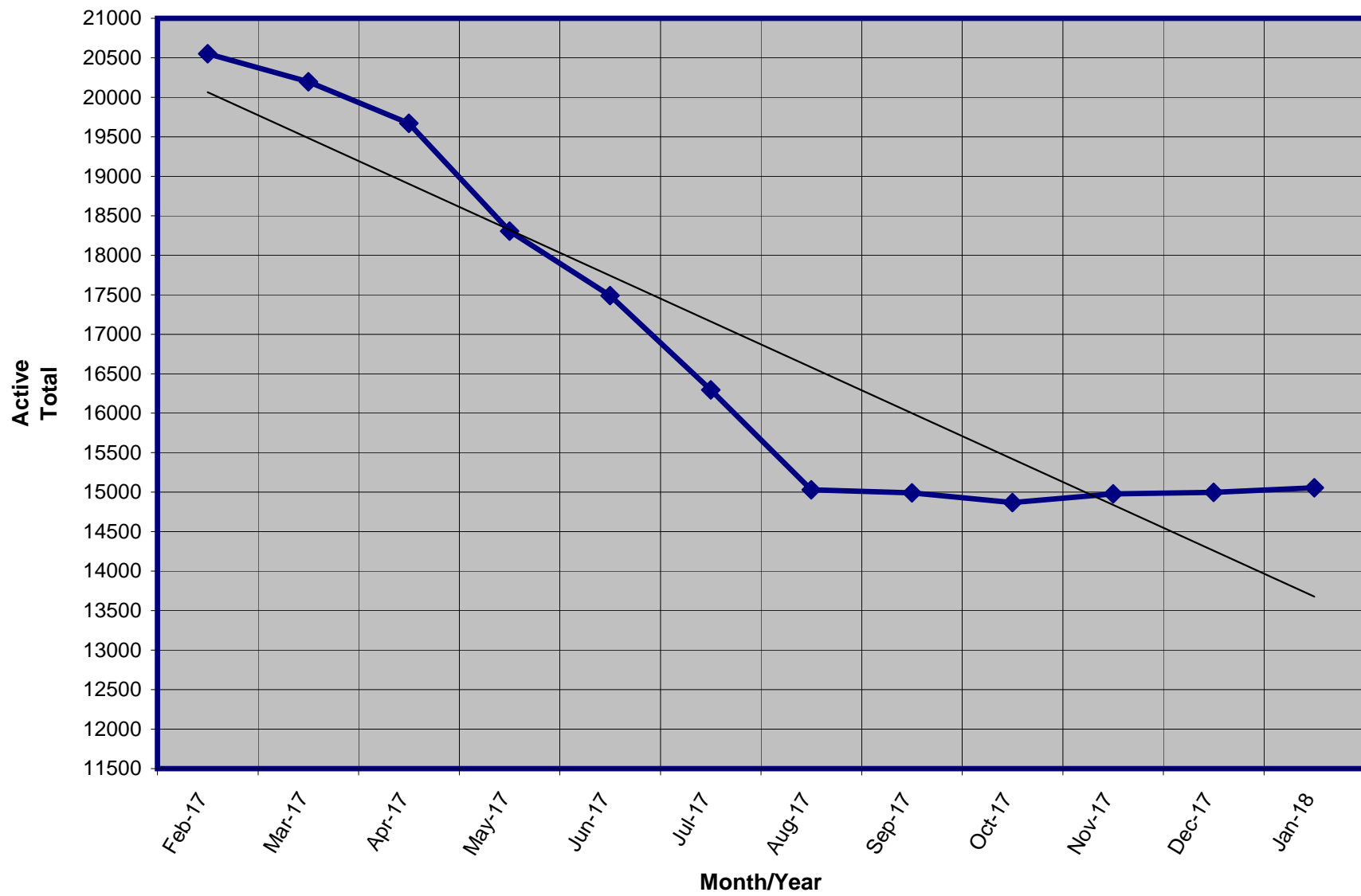
ACTIVE SUB (ACTIVE NON MEM) = Current Dues Paying or Lifetime Donors Who Have NOT Signed the Certificate (Formerly Called "Subscriber")

TOTAL ACTIVE = Current Dues Paying or Lifetime Donor

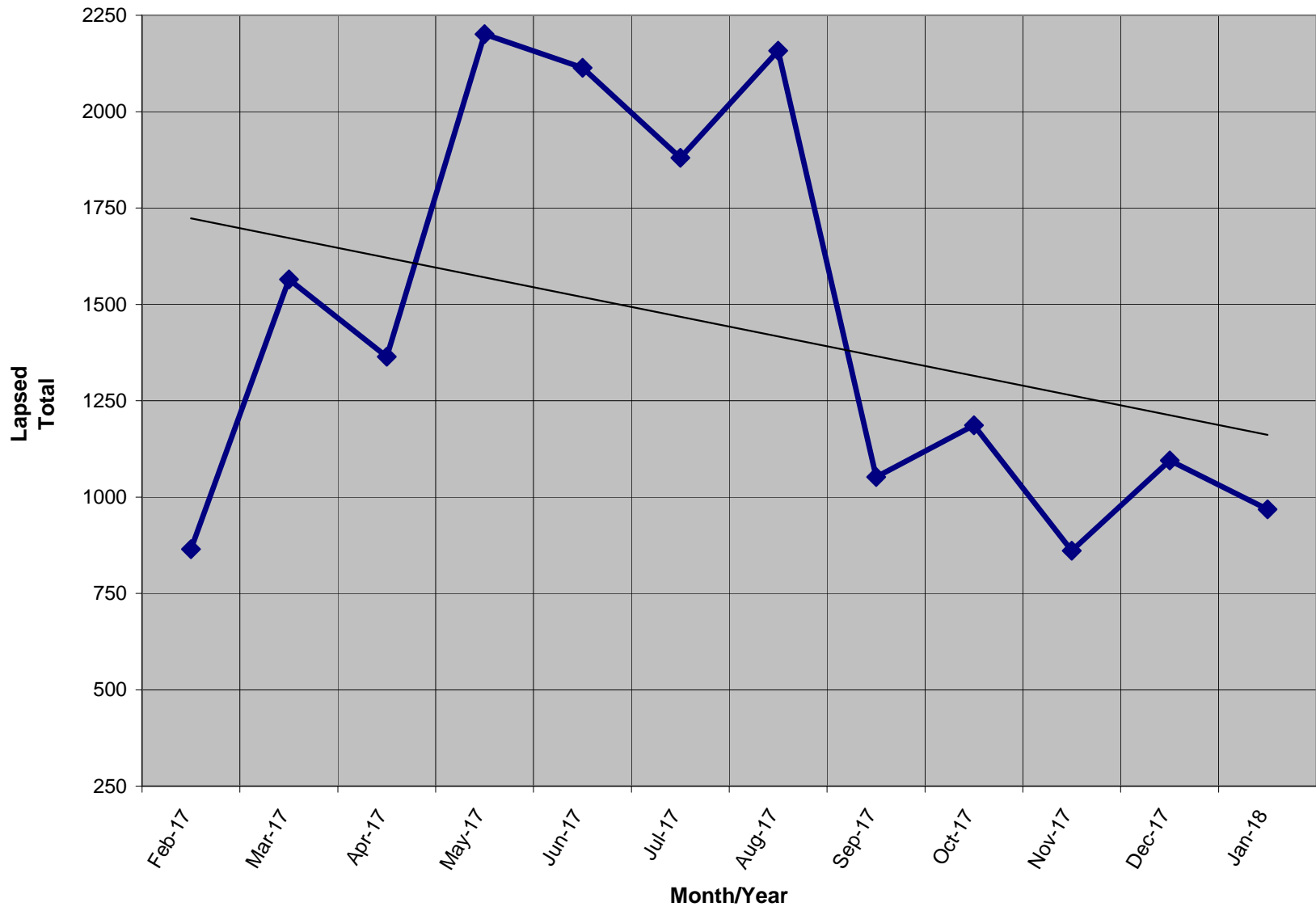
BSM = By Law Definition of "Sustaining Member" and number used for delegate count

(Art 5-3: "Sustaining member" is any Party member who has given at least \$25 to the Party in the prior twelve months, or who is a life member.)

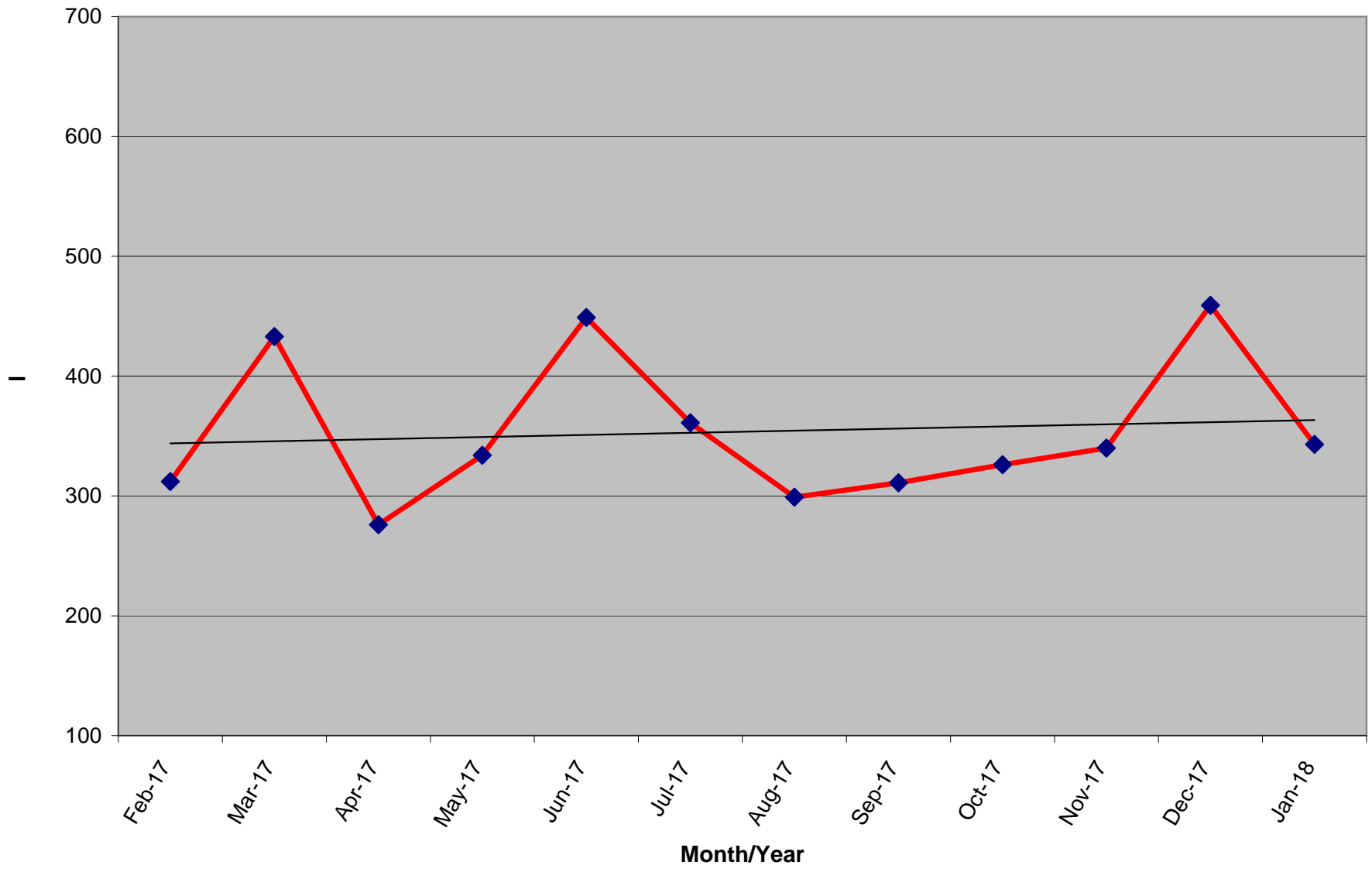
Active Donors - Past 12 Months



Lapsed - Dropped - Donors - Past 12 Months



**New Donors Past 12 Months**



**Renew Donors - Past 12 Months**

