

Libertarian National Committee - Membership Report

"Donor" Totals - Jul-15

4 Year & 12 Month Comparison

	Dec-11	Dec-12	Dec-13	Dec-14	Jul-14	Aug-14	Sep-14	Oct-14	Nov-14	Dec-14	Jan-15	Feb-15	Mar-15	Apr-15	May-15	Jun-15	Jul-15
Active w-MEM	13468	13749	13670	12053	14260	14134	13734	13442	12947	12053	11902	11988	11845	11837	11663	11640	11649
Active w/out MEM	859	1194	967	747	1023	1018	990	944	930	747	662	672	652	651	560	546	536
Total Active Donors	14327	14943	14637	12800	15283	15152	14724	14386	13877	12800	12564	12660	12497	12488	12223	12186	12185
Percent Change	-4.92%	4.30%	-2.05%	-12.55%	0.01%	-0.86%	-2.82%	-2.30%	-3.54%	-7.76%	-1.84%	0.76%	-1.29%	-0.07%	-2.12%	-0.30%	-0.01%
Lapsed/Drop MEM	1379	1381	1245	1733	608	637	945	1385	1235	1733	863	619	972	671	718	484	595
Lapse w/out MEM	74	76	82	203	27	31	75	98	52	203	138	32	53	25	101	33	27
Lapsed/Drop Total	1453	1457	1327	1936	635	668	1020	1483	1287	1936	1001	651	1025	696	819	517	622
Percent Change	65.49%	0.28%	-8.92%	45.89%	-0.47%	5.20%	52.69%	45.39%	-13.22%	50.43%	-48.30%	-34.97%	57.45%	-32.10%	17.67%	-36.87%	20.31%
New Donors w-MEM	256	240	267	110	148	153	94	235	208	110	126	111	141	104	70	110	107
New w/out MEM	26	38	168	6	5	18	17	10	2	6	8	11	5	2	4	3	5
New Total	282	278	435	116	153	171	111	245	210	116	134	122	146	106	74	113	112
Percent Change	80.77%	-1.42%	56.47%	-73.33%	0.66%	11.76%	-35.09%	120.72%	-14.29%	-44.76%	15.52%	-8.96%	19.67%	-27.40%	-30.19%	52.70%	-0.88%
Renewed w-MEM	900	708	966	729	584	358	451	858	532	729	586	594	688	559	474	351	497
Renewed w/out MEM	61	57	55	14	-101	8	30	42	36	14	45	31	28	22	6	16	12
Total Renewals	961	765	1021	743	483	366	481	900	568	743	631	625	716	581	480	367	509
Percent Change	-3.13%	-20.40%	33.46%	-27.23%	20.15%	-24.22%	31.42%	87.11%	-36.89%	30.81%	-15.07%	-0.95%	14.56%	-18.85%	-17.38%	-23.54%	38.69%
Total "MEM"	121850	126900	130507	133400	132475	132622	132736	133118	133314	133400	133568	133983	134147	134278	134338	134470	134618
Percent Change	1.77%	4.14%	2.84%	2.22%	0.25%	0.11%	0.09%	0.29%	0.15%	0.06%	0.13%	0.31%	0.12%	0.10%	0.04%	0.10%	0.11%
Total "LIFETIME"	2142	2208	2295	2446	2441	2443	2445	2445	2445	2446	2447	2447	2451	2455	2455	2455	2455
Total "BSM"	13589	13824	13869	12526	14158	13963	13533	13437	12778	12526	12294	12260	12122	12040	11722	11723	11625

Last Year vs. This Year

	Jul-14	Jul-15	Change	12 Mo Ave		
Active w-MEM	14260	11649	-18.31%	12403	<u>Active Donors w-MEM =</u>	11649
Active w/out MEM	1023	536	-47.61%	742	<u>Lapsed & Zero Dues MEM =</u>	122969
Total Active Donors	15283	12185	-20.27%	13145	<u>Total "MEM" w-Signed Certificate =</u>	<u>134618</u>
Lapsed/Dropped	635	622	-2.05%	977	<u>Member Signed Certificate =</u>	<u>"MEM"</u>
New Donors	153	112	-26.80%	138	<u>Total "BSM" =</u>	<u>11625</u>
Renewals	483	509	5.38%	581	<u>Bylaws Defined Sustaining Member =</u>	<u>"BSM"</u>

Jul-15 MEMBERSHIP BY STATE --- ACTIVE AND NON ACTIVE

<u>STATE</u>	<u>TOTAL "MEM"</u>	<u>ACTIVE "MEM"</u>	<u>ACTIVE "SUB"</u>	<u>TOTAL "ACTIVE"</u>	<u>TOTAL "BSM"</u>
AK	667	60	1	61	59
AL	1729	156	3	159	152
AR	892	81	5	86	81
AZ	3179	290	13	303	294
CA	19319	1548	78	1626	1548
CO	3697	363	16	379	361
CT	1479	141	8	149	140
DC	371	26	3	29	26
DE	382	31	2	33	31
FL	7967	677	42	719	677
GA	5893	342	11	353	340
HI	526	55	3	58	55
IA	1023	112	1	113	110
ID	758	52	2	54	52
IL	4479	404	21	425	401
IN	3176	345	14	359	344
KS	1228	128	2	130	128
KY	1177	113	4	117	112
LA	1083	122	5	127	125
MA	2820	193	10	203	191
MD	2442	237	13	250	237
ME	802	53	3	56	53
MI	5175	381	10	391	382
MN	2024	163	9	172	161
MO	2351	214	13	227	210
MS	709	80	2	82	79

<u>STATE</u>	<u>TOTAL "MEM"</u>	<u>ACTIVE "MEM"</u>	<u>ACTIVE "SUB"</u>	<u>TOTAL "ACTIVE"</u>	<u>TOTAL "BSM"</u>
MT	511	50	2	52	51
NC	3354	302	10	312	302
ND	222	33	1	34	32
NE	657	71	2	73	71
NH	1352	121	7	128	120
NJ	3074	259	14	273	263
NM	1117	94	9	103	92
NV	1907	161	6	167	158
NY	4980	513	29	542	516
OH	5196	519	16	535	514
OK	1029	84	3	87	82
OR	2204	149	12	161	149
PA	5893	460	22	482	465
RI	314	28	2	30	27
SC	1723	147	4	151	147
SD	256	32	1	33	31
TN	2386	194	2	196	194
TX	9013	822	41	863	816
UT	1147	77	6	83	77
VA	4699	512	18	530	511
VT	394	23	2	25	23
WA	4330	323	15	338	325
WI	1939	173	8	181	172
WV	605	47	1	48	49
WY	313	24	1	25	25
XX	655	64	8	72	64

	<u>TOTAL "MEM"</u>	<u>ACTIVE "MEM"</u>	<u>ACTIVE "SUB"</u>	<u>TOTAL "ACTIVE"</u>	<u>TOTAL "BSM"</u>
TOTALS	134618	11649	536	12185	11625

DEFINITIONS: MEM = Member Signed Certificate

Total MEM = Total # Constituents Per State w-Member Signed Certificate

ACTIVE MEM = Current Dues Paying or Lifetime Donor w-Signed Certificate

ACTIVE SUB (ACTIVE NON MEM) = Current Dues Paying or Lifetime Donors Who Have NOT Signed the Certificate (Formerly Called "Subscriber")

TOTAL ACTIVE = Current Dues Paying or Lifetime Donor

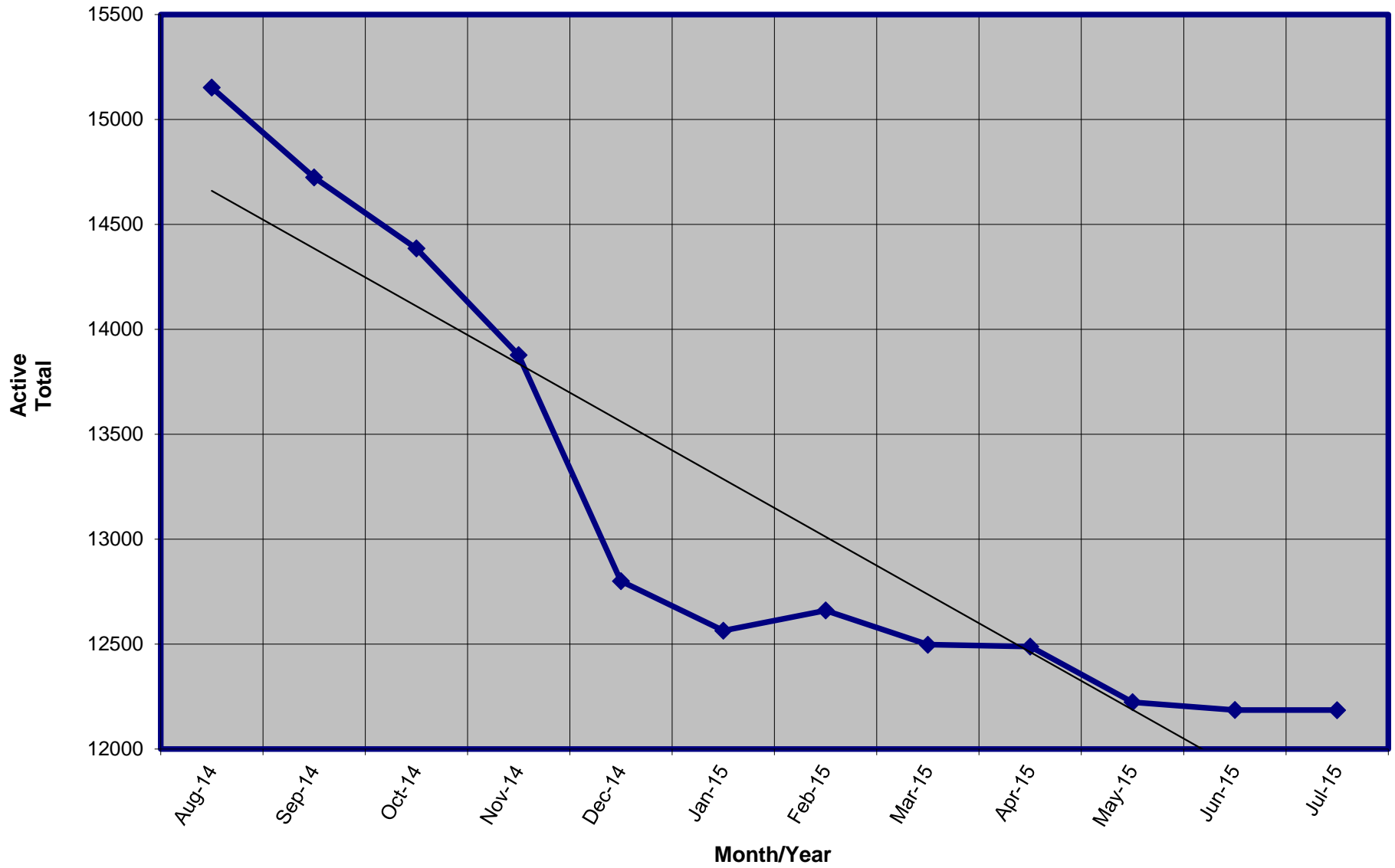
BSM = By Law Definition of "Sustaining Member" and number used for delegate count

(Art 5-3: "Sustaining member" is any Party member who has given at least \$25 to the Party in the prior twelve months, or who is a life member.)

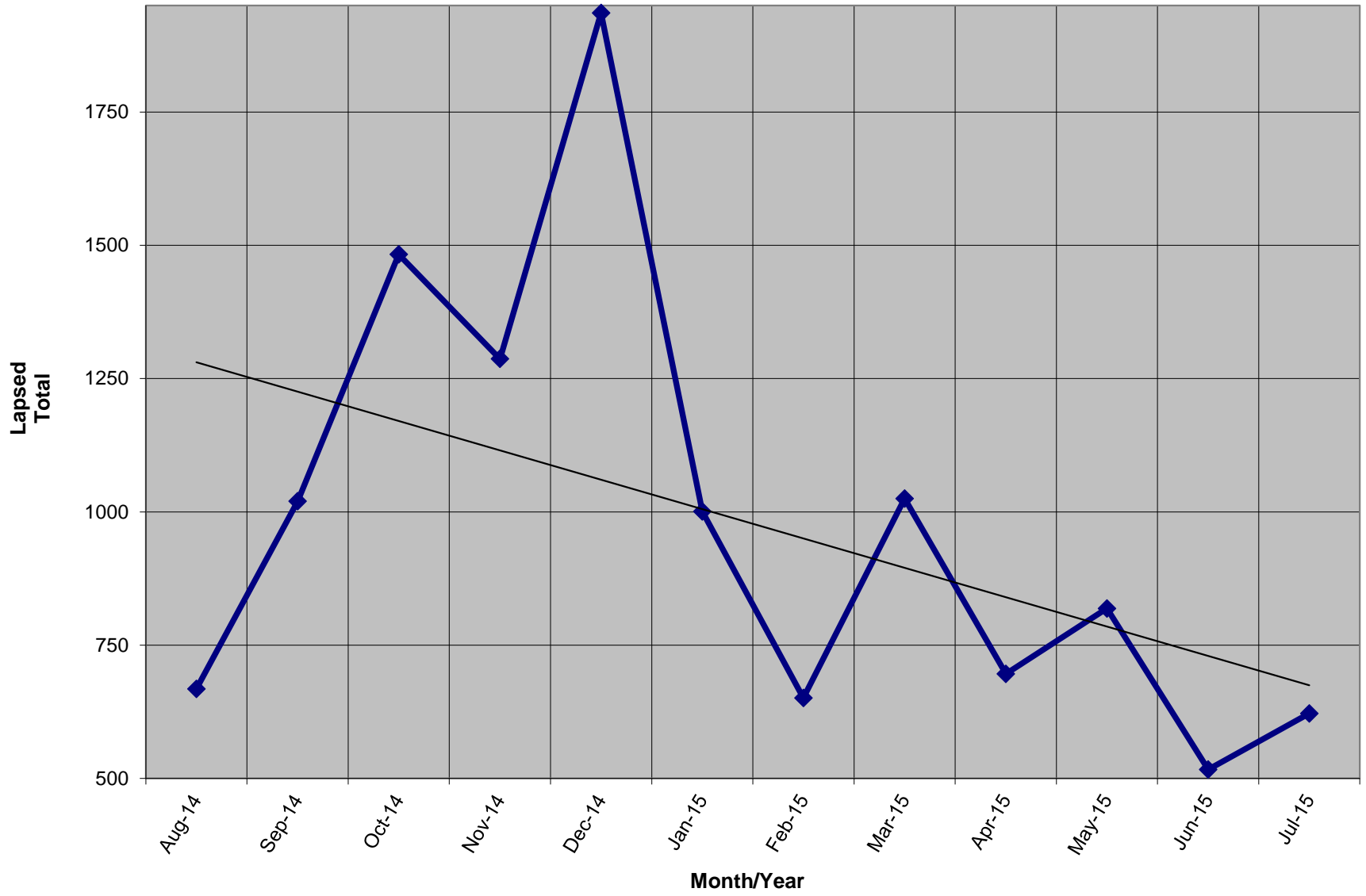
SUSTAINING MEMBERSHIP STATE RANKINGS - "BSM"

<u>State</u>	<u>Total BSM</u>	<u>Rank</u>	<u>State</u>	<u>Total BSM</u>	<u>Rank</u>
CA	1548	1	CT	140	27
TX	816	2	KS	128	28
FL	677	3	LA	125	29
NY	516	4	NH	120	30
OH	514	5	KY	112	31
VA	511	6	IA	110	32
PA	465	7	NM	92	33
IL	401	8	OK	82	34
MI	382	9	AR	81	35
CO	361	10	MS	79	36
IN	344	11	UT	77	37
GA	340	12	NE	71	38
WA	325	13	AK	59	39
NC	302	14	HI	55	40
AZ	294	15	ME	53	41
NJ	263	16	ID	52	42
MD	237	17	MT	51	43
MO	210	18	WV	49	44
TN	194	19	ND	32	45
MA	191	20	DE	31	46
WI	172	21	SD	31	47
MN	161	22	RI	27	48
NV	158	23	DC	26	49
AL	152	24	WY	25	50
OR	149	25	VT	23	51
SC	147	26	XX	64	52

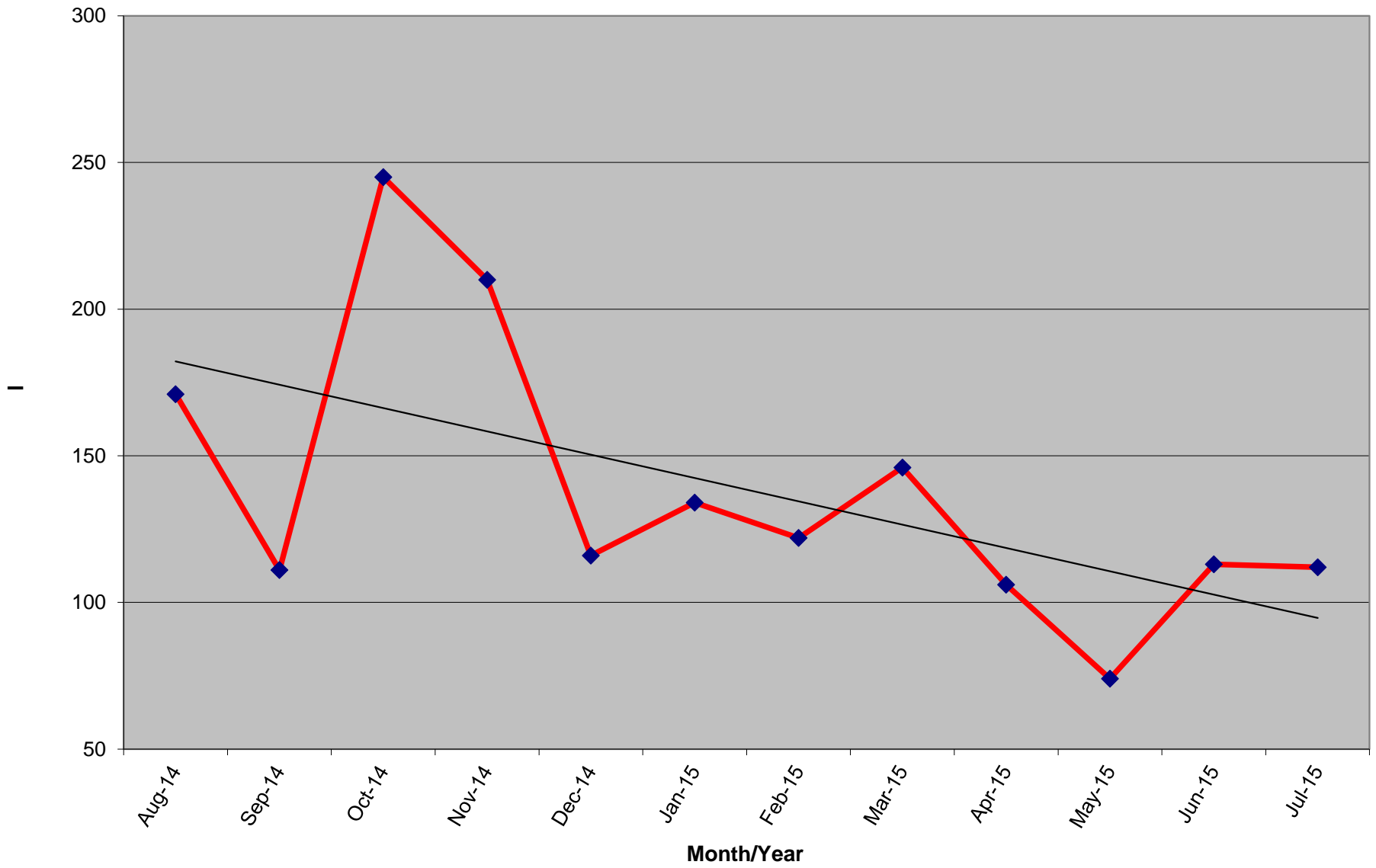
Active Donors - Past 12 Months



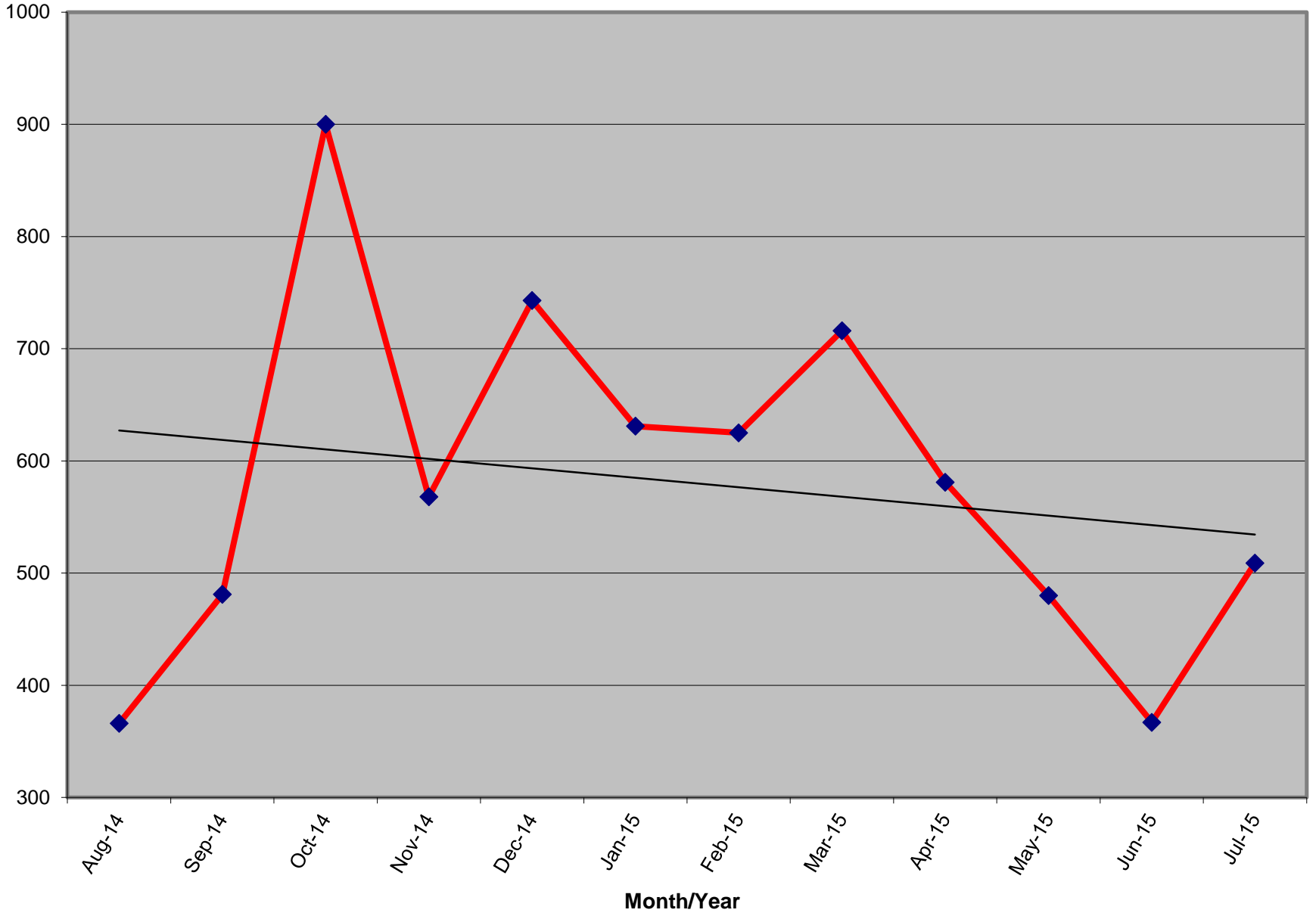
Lapsed - Dropped - Donors - Past 12 Months



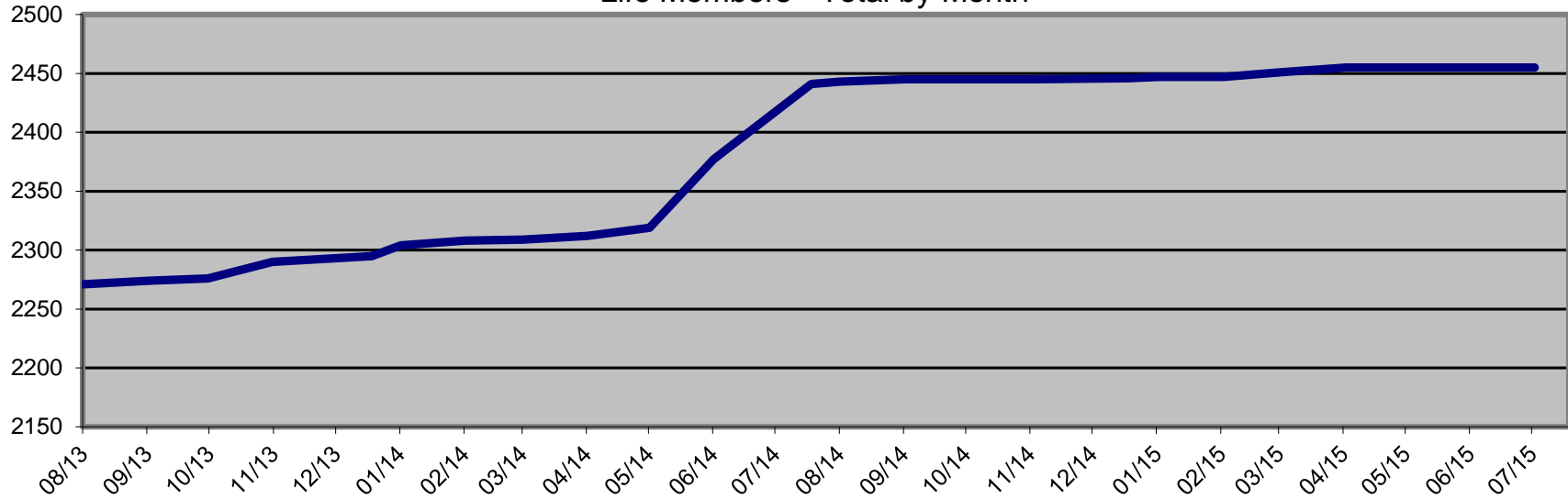
New Donors Past 12 Months



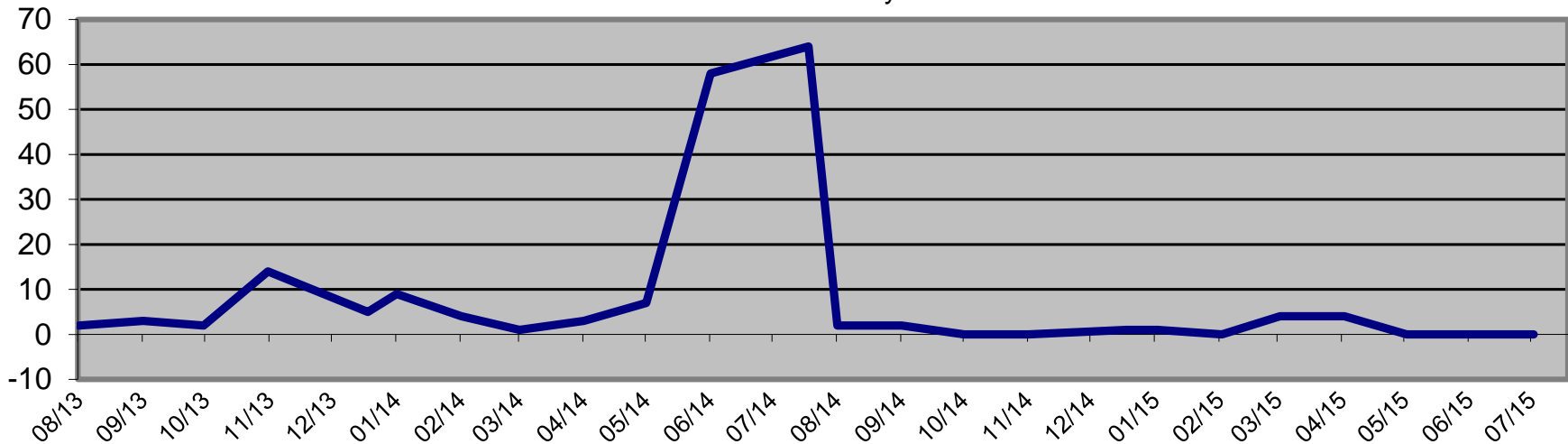
Renew Donors - Past 12 Months



Life Members - Total by Month



Life Members Increase by Month



Ave # of Life Members Increase Per Month Last 24 Months = 2.8 / Since Aug-14 = 1.2 Per Month *

* Doesn't include June/July-14 due to Life Member push prior to increase from \$1000 to \$1500 for a Life Membership

Note for 12 months prior to June/July-14 Ave # Increase = 4.58 Per Month