

Libertarian National Committee - Membership Report
"Donor" Totals - Dec-19

4 Year & 12 Month Comparison

	Dec-15	Dec-16	Dec-17	Dec-18	Dec-18	Jan-19	Feb-19	Mar-19	Apr-19	May-19	Jun-19	Jul-19	Aug-19	Sep-19	Oct-19	Nov-19	Dec-19
Active w-MEM	11184	18592	14445	14494	14494	14278	14294	14271	14187	14224	14158	13895	13991	14232	14632	15271	15711
Active w/out MEM	509	1814	553	514	514	496	503	502	501	486	480	479	441	436	423	420	421
Total Active Donors	11693	20406	14998	15008	15008	14774	14797	14773	14688	14710	14638	14374	14432	14668	15055	15691	16132
Percent Change					-3.05%	-1.56%	0.16%	-0.16%	-0.58%	0.15%	-0.49%	-1.80%	0.40%	1.64%	2.64%	4.22%	2.81%
Lapsed/Drop MEM	909	1016	1072	1184	1184	1077	839	1050	871	926	856	1132	1080	732	1008	742	844
Lapse w/out MEM	30	27	23	27	27	21	15	23	24	51	17	20	50	24	26	9	26
Lapsed/Drop Total	939	1043	1095	1211	1211	1098	854	1073	895	977	873	1152	1130	756	1034	751	870
Percent Change					22.08%	-9.33%	-22.22%	25.64%	-16.59%	9.16%	-10.64%	31.96%	-1.91%	-33.10%	36.77%	-27.37%	15.85%
New Donors w-MEM	103	321	444	159	159	199	227	230	180	218	180	219	353	403	533	701	612
New w/out MEM	6	11	15	14	14	3	2	15	15	14	5	17	10	9	6	3	11
New Total	109	332	459	173	173	202	229	245	195	232	185	236	363	412	539	704	623
Percent Change					-33.72%	16.76%	13.37%	6.99%	-20.41%	18.97%	-20.26%	27.57%	53.81%	13.50%	30.83%	30.61%	-11.51%
Renewed w-MEM	792	723	651	564	564	662	628	797	607	745	610	650	823	570	875	680	672
Renewed w/out MEM	20	8	4	2	2	0	20	7	8	22	6	2	2	10	7	3	16
Total Renewals	812	731	655	566	566	662	648	804	615	767	616	652	825	580	882	683	688
Percent Change					-2.41%	16.96%	-2.11%	24.07%	-23.51%	24.72%	-19.69%	5.84%	26.53%	-29.70%	52.07%	-22.56%	0.73%
Total "MEM"	135197	145814	138815	137321	137321	137535	137726	137974	138141	138361	138536	138757	139127	139520	140067	140787	141386
Percent Change					0.08%	0.16%	0.14%	0.18%	0.12%	0.16%	0.13%	0.16%	0.27%	0.28%	0.39%	0.51%	0.43%
Total "LIFETIME"	2458	2571	2618	2652	2652	2652	2658	2668	2674	2679	2686	2687	2689	2698	2709	2717	2725
Total "BSM"	11045	19003	14668	14639	14639	14385	14372	14327	14324	14288	14208	13934	13963	14139	14501	15117	15627

Last Year vs. This Year

	Dec-18	Dec-19	Change	12 Mo Ave		
Active w-MEM	14494	15711	8.40%	14429	<u>Active Donors w-MEM =</u>	15711
Active w/out MEM	514	421	-18.09%	466	<u>Lapsed & Zero Dues MEM =</u>	125675
Total Active Donors	15008	16132	7.49%	14894	<u>Total "MEM" w-Signed Certificate =</u>	141386
Lapsed/Dropped	1211	870	-28.16%	955	<u>Member Signed Certificate =</u>	"MEM"
New Donors	173	623	260.12%	347	<u>Total "BSM" =</u>	15627
Renewals	566	688	21.55%	702	<u>Bylaws Defined Sustaining Member =</u>	"BSM"

Dec-19 MEMBERSHIP BY STATE --- ACTIVE AND NON ACTIVE

SUSTAINING MEMBERSHIP STATE RANKINGS - "BSM"

STATE	TOTAL "MEM"	ACTIVE "MEM"	ACTIVE "SUB"	TOTAL "ACTIVE"	TOTAL "BSM"	STATE	TOTAL "MEM"	ACTIVE "MEM"	ACTIVE "SUB"	TOTAL "ACTIVE"	TOTAL "BSM"	State	Total BSM	Rank	State	Total BSM	Rank			
AK	674	67	0	67	65	MT	583	71	2	73	70	CA	1642	1	LA	193	27			
AL	1898	210	2	212	208	NC	3650	435	6	441	435	TX	1220	2	NH	192	28			
AR	949	104	2	106	105	ND	257	44	5	49	43	FL	875	3	CT	183	29			
AZ	3379	384	10	394	376	NE	687	100	1	101	102	NY	777	4	OK	172	30			
CA	18818	1656	57	1713	1642	NH	1485	191	3	194	192	OH	705	5	NM	157	31			
CO	4014	530	11	541	524	NJ	3072	330	10	340	325	PA	643	6	KY	149	32			
CT	1518	183	7	190	183	NM	1218	158	2	160	157	VA	581	7	UT	138	33			
DC	368	41	2	43	40	NV	1961	216	11	227	218	CO	524	8	IA	133	34			
DE	424	50	4	54	48	NY	5237	777	22	799	777	WA	518	9	KS	126	35			
FL	8575	878	34	912	875	OH	5264	707	11	718	705	IL	497	10	AR	105	36			
GA	5971	444	9	453	444	OK	1167	174	0	174	172	MI	496	11	NE	102	37			
HI	546	50	4	54	49	OR	2276	191	11	202	194	GA	444	12	MS	98	38			
IA	1118	135	2	137	133	PA	6084	644	14	658	643	NC	435	13	ME	91	39			
ID	843	80	2	82	79	RI	322	39	2	41	39	IN	428	14	ID	79	40			
IL	4514	500	13	513	497	SC	2075	248	3	251	249	TN	382	15	WV	74	41			
IN	3495	433	7	440	428	SD	291	49	1	50	48	AZ	376	16	MT	70	42			
KS	1213	126	1	127	126	TN	2841	390	3	393	382	NJ	325	17	AK	65	43			
KY	1276	148	5	153	149	TX	10041	1218	32	1250	1220	MD	297	18	HI	49	44			
LA	1260	195	3	198	193	UT	1297	140	5	145	138	MA	275	19	DE	48	45			
MA	2849	277	8	285	275	VA	4932	578	13	591	581	VI	257	20	SD	48	46			
MD	2455	298	14	312	297	VT	413	44	4	48	44	MO	255	21	WY	45	47			
ME	841	95	0	95	91	WA	4730	523	15	538	518	MN	249	22	VT	44	48			
MI	5320	500	13	513	496	WI	2168	258	10	268	257	SC	249	23	ND	43	49			
MN	2146	251	3	254	249	WV	637	74	0	74	74	NV	218	24	DC	40	50			
MO	2418	256	9	265	255	WY	340	46	0	46	45	AL	208	25	RI	39	51			
MS	760	97	3	100	98	XX	716	78	10	88	74	OR	194	26	XX	74	52			
												Total:		15627						
												TOTAL	ACTIVE	ACTIVE	TOTAL	TOTAL				
												"MEM"	"MEM"	"SUB"	"ACTIVE"	"BSM"				
												TOTALS	141386	15711	421	16132	15627			

DEFINITIONS: MEM = Member Signed Certificate

Total MEM = Total # Constituents Per State w-Member Signed Certificate

ACTIVE MEM = Current Dues Paying or Lifetime Donor w-Signed Certificate

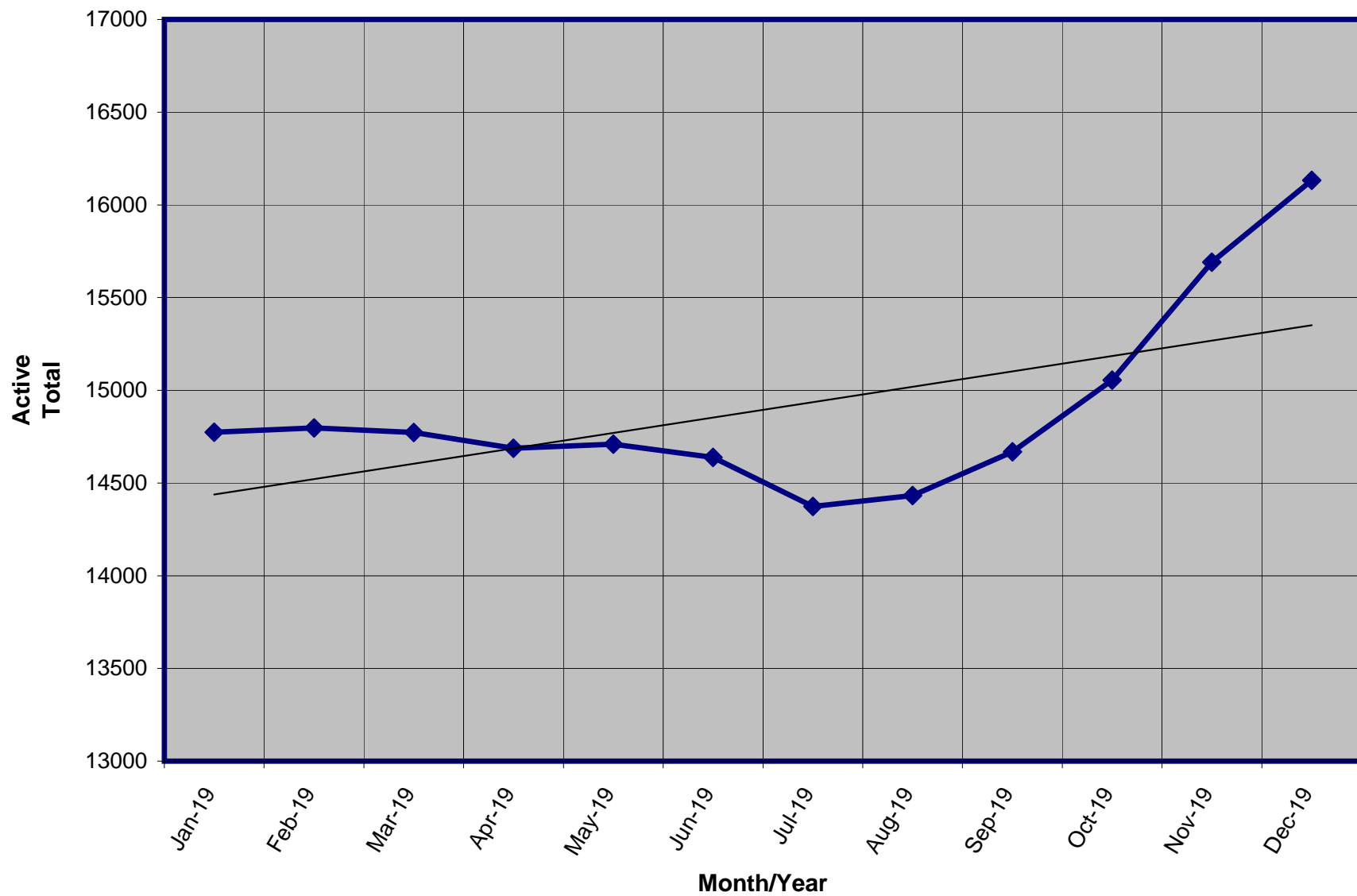
ACTIVE SUB (ACTIVE NON MEM) = Current Dues Paying or Lifetime Donors Who Have NOT Signed the Certificate (Formerly Called "Subscriber")

TOTAL ACTIVE = Current Dues Paying or Lifetime Donor

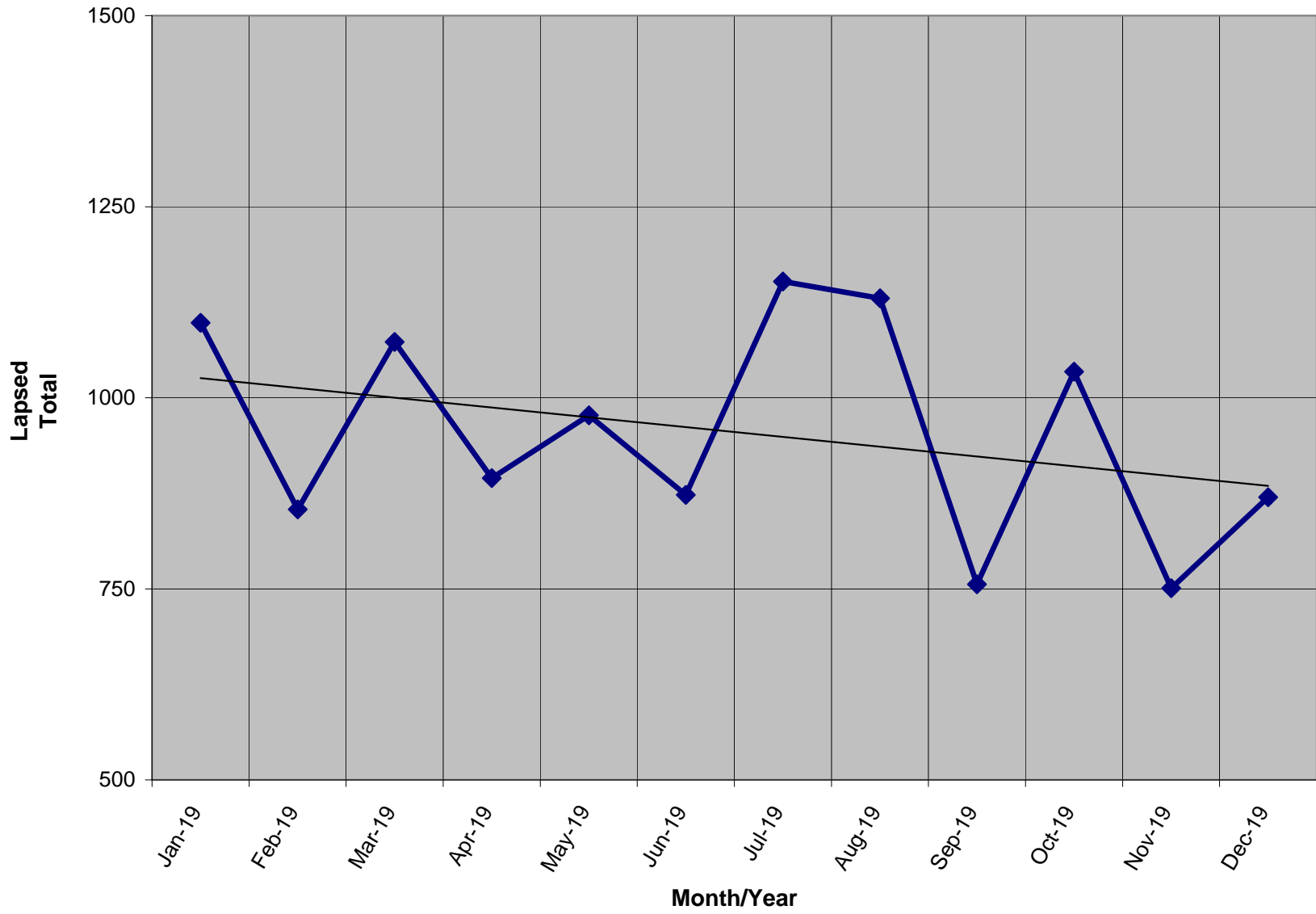
BSM = By Law Definition of "Sustaining Member" and number used for delegate count

(Art 5-3: "Sustaining member" is any Party member who has given at least \$25 to the Party in the prior twelve months, or who is a life member.)

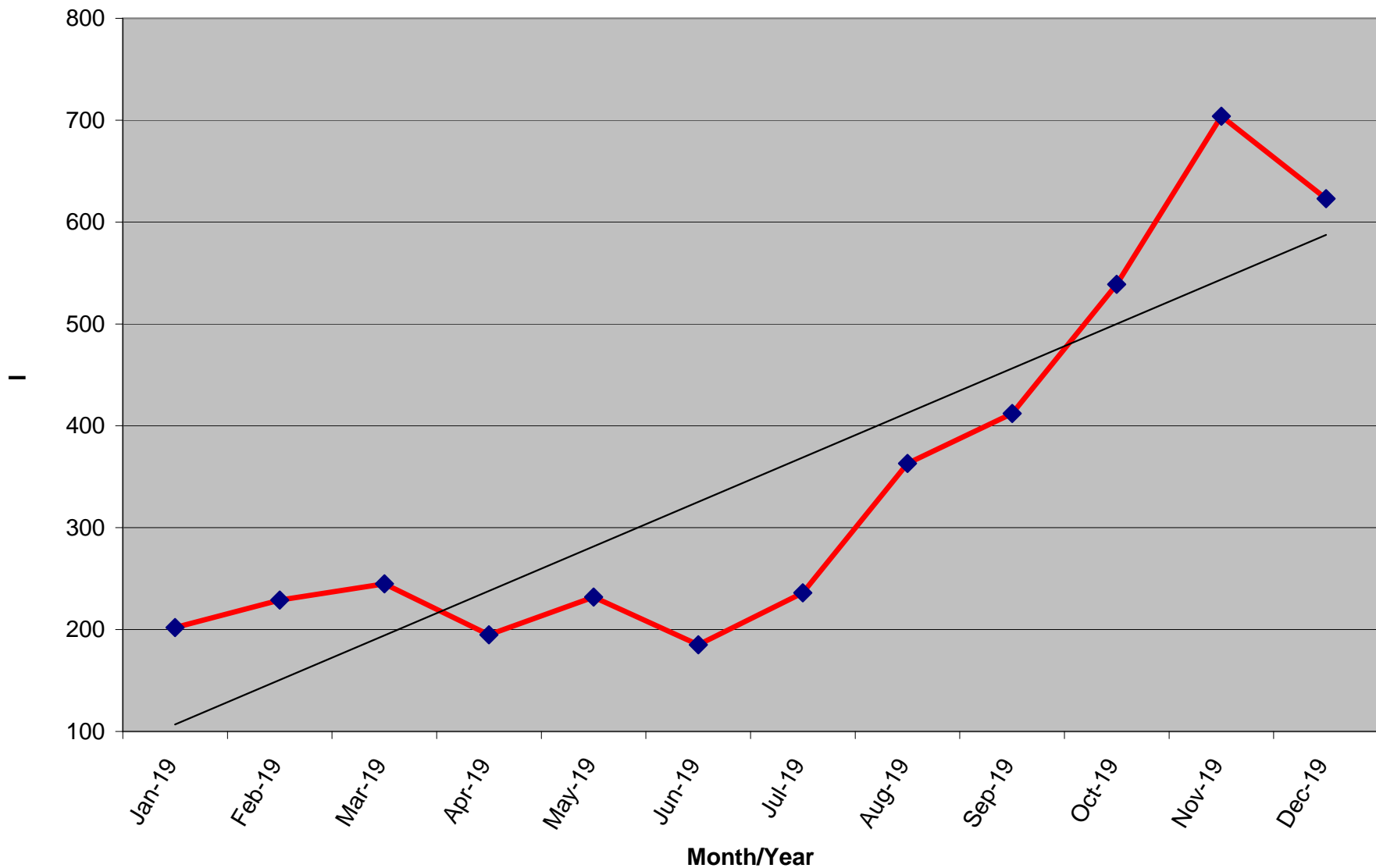
Active Donors - Past 12 Months



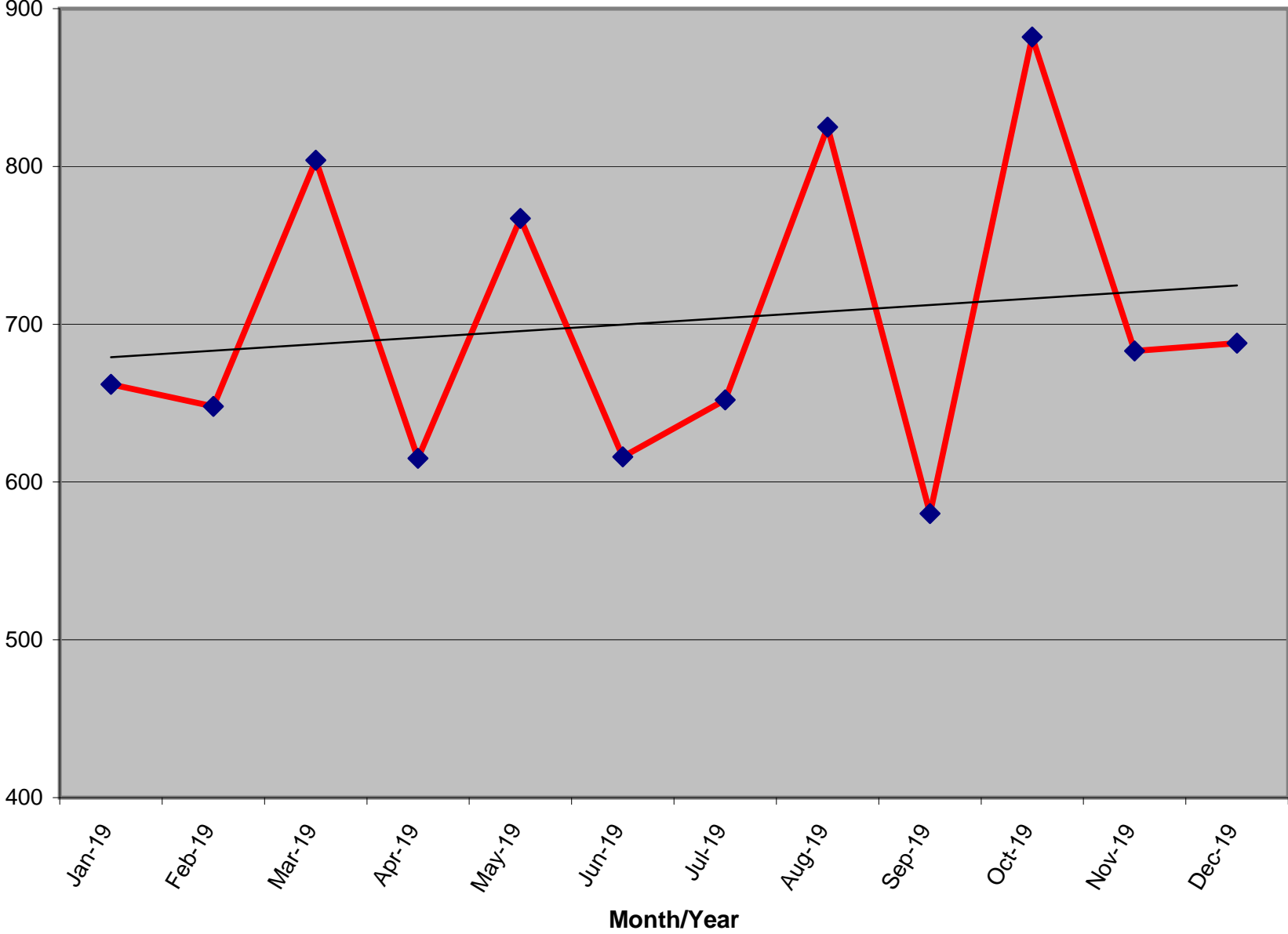
Lapsed - Dropped - Donors - Past 12 Months



New Donors Past 12 Months



Renew Donors - Past 12 Months



% OF ACTIVE MEMBERS VS. REGISTERED LIBERTARIAN VOTERS BY STATE

STATE	TI Reg Voters	Reg Lib	% Reg L to TI Reg	Total Active By State	Active to Registered
AK	520,646	7,593	1.46%	67	0.88%
AL	3,303,122	0	n/a	210	n/a
AR	1,744,141	348	0.02%	104	29.89%
AZ	3,774,016	32,056	0.85%	384	1.20%
CA	20,328,636	171,579	0.84%	1,656	0.97%
CO	3,219,953	36,911	1.15%	530	1.44%
CT	2,156,316	2,959	0.14%	183	6.18%
DC	473,526	1,025	0.22%	41	4.00%
DE	715,019	1,640	0.23%	50	3.05%
FL	13,694,743	31,682	0.23%	878	2.77%
GA	6,443,457	0	n/a	444	n/a
HI	716,458	0	n/a	50	n/a
IA	1,955,058	9,331	0.48%	135	1.45%
ID	801,151	6,482	0.81%	80	1.23%
IL	8,780,685	0	n/a	500	n/a
IN	4,355,147	0	n/a	433	n/a
KS	1,611,223	13,746	0.85%	126	0.92%
KY	3,346,095	8,250	0.25%	148	1.79%
LA	2,972,024	14,569	0.49%	195	1.34%
MA	4,574,967	15,787	0.35%	277	1.75%
MD	3,903,599	20,894	0.54%	298	1.43%
ME	1,028,602	5,554	0.54%	95	1.71%
MI	7,347,955	0	n/a	500	n/a
MN	3,268,360	0	n/a	251	n/a
MO	4,123,266	0	n/a	256	n/a
MS	2,044,713	0	n/a	97	n/a

Registration totals provided by Richard Winger as of 11/19

STATE	TI Reg Voters	Reg Lib	% Reg L to TI Reg	Total Active By State	Active to Registered
MT	695,971	0	n/a	71	n/a
NC	6,571,602	36,010	0.55%	435	1.21%
ND	429,978	0	n/a	44	n/a
NE	1,203,872	15,029	1.25%	100	0.67%
NH	961,819	162	0.02%	191	117.90%
NJ	5,778,406	8,874	0.15%	330	3.72%
NM	1,220,056	7,792	0.64%	158	2.03%
NV	1,543,822	15,486	1.00%	216	1.39%
NY	12,695,762	9,757	0.08%	777	7.96%
OH	7,914,320	0	n/a	707	n/a
OK	2,112,991	8,497	0.40%	174	2.05%
OR	2,652,935	18,962	0.71%	191	1.01%
PA	8,609,880	44,848	0.52%	644	1.44%
RI	772,360	0	n/a	39	n/a
SC	3,268,076	0	n/a	248	n/a
SD	550,529	1,893	0.34%	49	2.59%
TN	4,112,566	0	n/a	390	n/a
TX	14,748,880	0	n/a	1,218	n/a
UT	1,446,211	15,393	1.06%	140	0.91%
VA	5,473,173	0	n/a	578	n/a
VT	459,719	0	n/a	44	n/a
WA	4,646,246	0	n/a	523	n/a
WI	5,842,402	0	n/a	258	n/a
WV	1,228,123	5,616	0.46%	74	1.32%
WY	262,620	2,410	0.92%	46	1.91%
XX	356,791	0	n/a	78	n/a
Totals	202,761,988	571,135	0.57%	15,711	2.75%

% OF ACTIVE MEMBERS VS. 2010 CENSUS POPULATION BY STATE

STATE	2010 Census	TI Active By State	Active to Population
AK	710,231	67	0.0094%
AL	4,779,736	210	0.0044%
AR	2,915,918	104	0.0036%
AZ	6,392,017	384	0.0060%
CA	37,253,956	1,656	0.0044%
CO	5,029,196	530	0.0105%
CT	3,574,097	183	0.0051%
DC	601,723	41	0.0068%
DE	897,934	50	0.0056%
FL	18,801,310	878	0.0047%
GA	9,687,653	444	0.0046%
HI	1,360,301	50	0.0037%
IA	3,046,355	135	0.0044%
ID	1,567,582	80	0.0051%
IL	12,830,632	500	0.0039%
IN	6,483,802	433	0.0067%
KS	2,853,118	126	0.0044%
KY	4,339,367	148	0.0034%
LA	4,533,372	195	0.0043%
MA	6,547,629	277	0.0042%
MD	5,773,552	298	0.0052%
ME	1,328,361	95	0.0072%
MI	9,883,640	500	0.0051%
MN	5,303,925	251	0.0047%
MO	5,988,927	256	0.0043%
MS	2,967,297	97	0.0033%

ACTIVE TO POPULATION BY RANK

STATE	2010 Census	TI Active By State	Active to Population
MT	989,415	71	0.0072%
NC	9,535,483	435	0.0046%
ND	672,591	44	0.0065%
NE	1,826,341	100	0.0055%
NH	1,316,470	191	0.0145%
NJ	8,791,894	330	0.0038%
NM	2,059,179	158	0.0077%
NV	2,700,551	216	0.0080%
NY	19,378,102	777	0.0040%
OH	11,536,504	707	0.0061%
OK	3,751,351	174	0.0046%
OR	3,831,074	191	0.0050%
PA	12,702,379	644	0.0051%
RI	1,052,567	39	0.0037%
SC	4,625,364	248	0.0054%
SD	814,180	49	0.0060%
TN	6,346,105	390	0.0061%
TX	25,145,561	1,218	0.0048%
UT	2,763,885	140	0.0051%
VA	8,001,024	578	0.0072%
VT	625,741	44	0.0070%
WA	6,724,540	523	0.0078%
WI	5,686,986	258	0.0045%
WV	1,852,994	74	0.0040%
WY	563,626	46	0.0082%
Totals	308,745,538	15,633	0.0051%

STATE	Rank	TI Active By State	Active to Population
NH	1	191	0.0145%
CO	2	530	0.0105%
AK	3	67	0.0094%
WY	4	46	0.0082%
NV	5	216	0.0080%
WA	6	523	0.0078%
NM	7	158	0.0077%
VA	8	578	0.0072%
MT	9	71	0.0072%
ME	10	95	0.0072%
VT	11	44	0.0070%
DC	12	41	0.0068%
IN	13	433	0.0067%
ND	14	44	0.0065%
TN	15	390	0.0061%
OH	16	707	0.0061%
SD	17	49	0.0060%
AZ	18	384	0.0060%
DE	19	50	0.0056%
NE	20	100	0.0055%
SC	21	248	0.0054%
MD	22	298	0.0052%
CT	23	183	0.0051%
ID	24	80	0.0051%
PA	25	644	0.0051%
UT	26	140	0.0051%

STATE	Rank	TI Active By State	Active to Population
MI	27	500	0.0051%
OR	28	191	0.0050%
TX	29	1,218	0.0048%
MN	30	251	0.0047%
FL	31	878	0.0047%
OK	32	174	0.0046%
GA	33	444	0.0046%
NC	34	435	0.0046%
WI	35	258	0.0045%
CA	36	1,656	0.0044%
IA	37	135	0.0044%
KS	38	126	0.0044%
AL	39	210	0.0044%
LA	40	195	0.0043%
MO	41	256	0.0043%
MA	42	277	0.0042%
NY	43	777	0.0040%
WV	44	74	0.0040%
IL	45	500	0.0039%
NJ	46	330	0.0038%
RI	47	39	0.0037%
HI	48	50	0.0037%
AR	49	104	0.0036%
KY	50	148	0.0034%
MS	51	97	0.0033%
Totals		15,633	0.0051%

** 2010 US Census Figures - does not include PR or other territories or out of US ("XX" states)*