

Libertarian National Committee - Membership Report

"Donor" Totals - Mar-19

4 Year & 12 Month Comparison

	Dec-15	Dec-16	Dec-17	Dec-18	Mar-18	Apr-18	May-18	Jun-18	Jul-18	Aug-18	Sep-18	Oct-18	Nov-18	Dec-18	Jan-19	Feb-19	Mar-19
Active w-MEM	11184	18592	14445	14494	14821	14895	14705	14498	14931	15219	15134	15100	14955	14494	14278	14294	14271
Active w/out MEM	509	1814	553	514	533	544	549	536	532	534	528	531	525	514	496	503	502
Total Active Donors	11693	20406	14998	15008	15354	15439	15254	15034	15463	15753	15662	15631	15480	15008	14774	14797	14773
Percent Change					1.31%	0.55%	-1.20%	-1.44%	2.85%	1.88%	-0.58%	-0.20%	-0.97%	-3.05%	-1.56%	0.16%	-0.16%
Lapsed/Drop MEM	909	1016	1072	1184	965	829	945	1154	784	794	896	969	962	1184	1077	839	1050
Lapse w/out MEM	30	27	23	27	37	16	41	34	19	21	32	29	30	27	21	15	23
Lapsed/Drop Total	939	1043	1095	1211	1002	845	986	1188	803	815	928	998	992	1211	1098	854	1073
Percent Change					27.81%	-15.67%	16.69%	20.49%	-32.41%	1.49%	13.87%	7.54%	-0.60%	22.08%	-9.33%	-22.22%	25.64%
New Donors w-MEM	103	321	444	159	329	258	233	203	547	353	215	265	253	159	199	227	230
New w/out MEM	6	11	15	14	22	15	35	13	14	18	17	13	8	14	3	2	15
New Total	109	332	459	173	351	273	268	216	561	371	232	278	261	173	202	229	245
Percent Change					39.29%	-22.22%	-1.83%	-19.40%	159.72%	-33.87%	-37.47%	19.83%	-6.12%	-33.72%	16.76%	13.37%	6.99%
Renewed w-MEM	792	723	651	564	835	645	522	744	670	729	596	670	564	564	662	628	797
Renewed w/out MEM	20	8	4	2	14	12	11	8	1	5	9	19	16	2	0	20	7
Total Renewals	812	731	655	566	849	657	533	752	671	734	605	689	580	566	662	648	804
Percent Change					34.55%	-22.61%	-18.87%	41.09%	-10.77%	9.39%	-17.57%	13.88%	-15.82%	-2.41%	16.96%	-2.11%	24.07%
Total "MEM" *	135197	145814	138815	137321	135008	135249	135435	135656	136255	136533	136720	136952	137205	137321	137535	137726	137974
Percent Change					0.23%	0.18%	0.14%	0.16%	0.44%	0.20%	0.14%	0.17%	0.18%	0.08%	0.16%	0.14%	0.18%
Total "LIFETIME" *	2458	2571	2618	2652	2574	2580	2585	2594	2636	2635	2643	2643	2646	2652	2652	2658	2668
Total "BSM"	11045	19003	14668	14639	14798	14891	14819	14634	14955	15298	15163	15150	15016	14639	14385	14372	14327

* Note: 01/18 Drop in Total Mem & TL Lifetime is result of PNCOA & Death Record append of 160k national records resulting in about 6k newly identified deceased effecting 80+ "active" record.

Last Year vs. This Year

	Mar-18	Mar-19	Change	12 Mo Ave		
Active w-MEM	14821	14271	-3.71%	14731	<u>Active Donors w-MEM =</u>	14271
Active w/out MEM	533	502	-5.82%	525	<u>Lapsed & Zero Dues MEM =</u>	123703
Total Active Donors	15354	14773	-3.78%	15256	<u>Total "MEM" w-Signed Certificate =</u>	137974
Lapsed/Dropped	1002	1073	7.09%	983	<u>Member Signed Certificate =</u>	"MEM"
New Donors	351	245	-30.20%	276	<u>Total "BSM" =</u>	14327
Renewals	849	804	-5.30%	658	<u>Bylaws Defined Sustaining Member =</u>	"BSM"

Mar-19 MEMBERSHIP BY STATE --- ACTIVE AND NON ACTIVE

STATE	TOTAL "MEM"	ACTIVE "MEM"	ACTIVE "SUB"	TOTAL "ACTIVE"	TOTAL "BSM"	STATE	TOTAL "MEM"	ACTIVE "MEM"	ACTIVE "SUB"	TOTAL "ACTIVE"	TOTAL "BSM"
AK	679	68	1	69	68	MT	574	58	3	61	61
AL	1834	201	2	203	202	NC	3502	382	13	395	385
AR	921	101	2	103	99	ND	244	35	2	37	35
AZ	3243	327	13	340	332	NE	664	88	0	88	89
CA	18756	1552	60	1612	1551	NH	1450	177	3	180	173
CO	3899	462	9	471	466	NJ	3039	317	12	329	313
CT	1490	158	8	166	157	NM	1184	143	3	146	143
DC	368	38	2	40	38	NV	1893	182	14	196	182
DE	412	53	0	53	51	NY	5071	675	36	711	674
FL	8301	805	30	835	800	OH	5103	647	13	660	644
GA	5885	417	12	429	416	OK	1124	164	3	167	162
HI	539	55	4	59	57	OR	2218	151	14	165	150
IA	1076	123	4	127	121	PA	5950	595	20	615	595
ID	805	77	2	79	80	RI	310	34	2	36	34
IL	4461	489	15	504	496	SC	1985	213	2	215	215
IN	3396	392	13	405	396	SD	281	43	2	45	43
KS	1200	129	3	132	131	TN	2690	325	4	329	336
KY	1245	135	6	141	134	TX	9647	1072	40	1112	1092
LA	1222	175	5	180	177	UT	1223	103	5	108	103
MA	2815	249	11	260	249	VA	4862	558	15	573	567
MD	2410	294	11	305	295	VT	397	33	3	36	32
ME	823	82	2	84	82	WA	4622	468	16	484	471
MI	5210	453	13	466	454	WI	2118	263	13	276	266
MN	2091	205	8	213	207	WV	617	64	0	64	65
MO	2357	242	11	253	244	WY	332	43	1	44	43
MS	736	89	4	93	88	XX	700	67	12	79	63

SUSTAINING MEMBERSHIP STATE RANKINGS - "BSM"

State	Total BSM	Rank	State	Total BSM	Rank
CA	1551	1	NH	173	27
TX	1092	2	OK	162	28
FL	800	3	CT	157	29
NY	674	4	OR	150	30
OH	644	5	NM	143	31
PA	595	6	KY	134	32
VA	567	7	KS	131	33
IL	496	8	IA	121	34
WA	471	9	UT	103	35
CO	466	10	AR	99	36
MI	454	11	NE	89	37
GA	416	12	MS	88	38
IN	396	13	ME	82	39
NC	385	14	ID	80	40
TN	336	15	AK	68	41
AZ	332	16	WV	65	42
NJ	313	17	MT	61	43
MD	295	18	HI	57	44
WI	266	19	DE	51	45
MA	249	20	SD	43	46
MO	244	21	WY	43	47
SC	215	22	DC	38	48
MN	207	23	ND	35	49
AL	202	24	RI	34	50
NV	182	25	VT	32	51
LA	177	26	XX	63	52
			Total:	14327	

TOTAL "MEM"	ACTIVE "MEM"	ACTIVE "SUB"	TOTAL "ACTIVE"	TOTAL "BSM"
TOTALS	137974	14271	502	14773

DEFINITIONS: MEM = Member Signed Certificate

Total MEM = Total # Constituents Per State w-Member Signed Certificate

ACTIVE MEM = Current Dues Paying or Lifetime Donor w-Signed Certificate

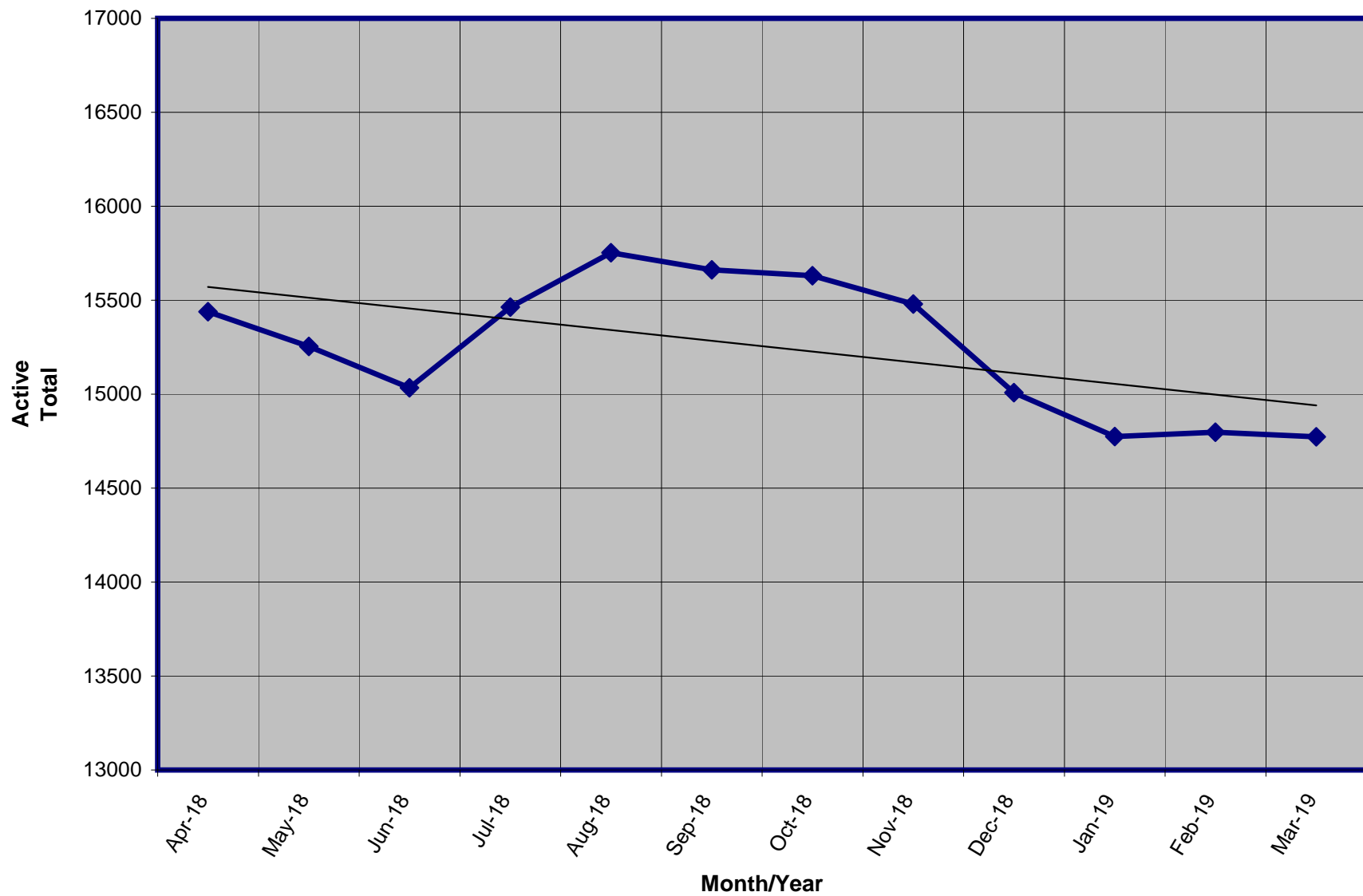
ACTIVE SUB (ACTIVE NON MEM) = Current Dues Paying or Lifetime Donors Who Have NOT Signed the Certificate (Formerly Called "Subscriber")

TOTAL ACTIVE = Current Dues Paying or Lifetime Donor

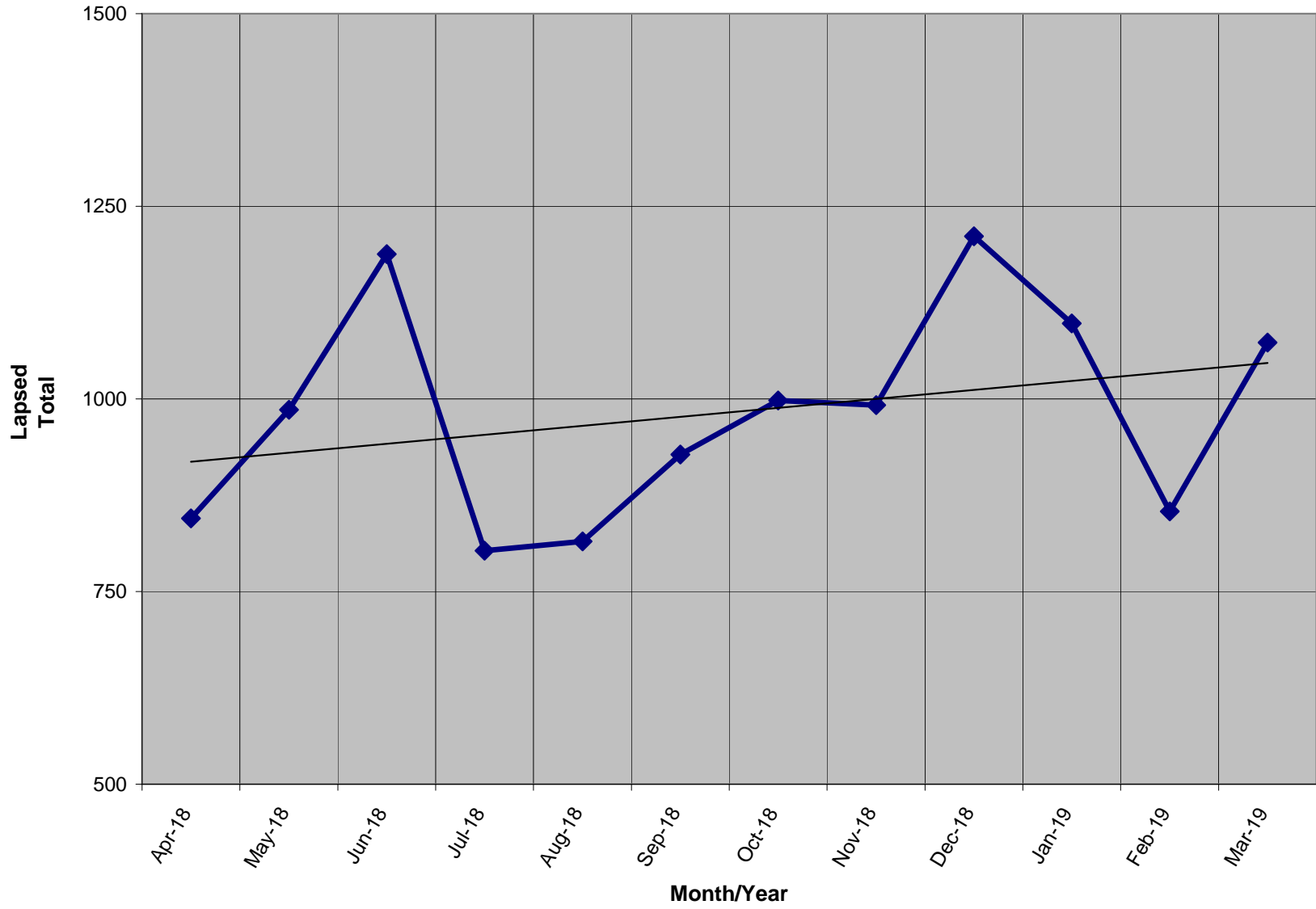
BSM = By Law Definition of "Sustaining Member" and number used for delegate count

(Art 5-3: "Sustaining member" is any Party member who has given at least \$25 to the Party in the prior twelve months, or who is a life member.)

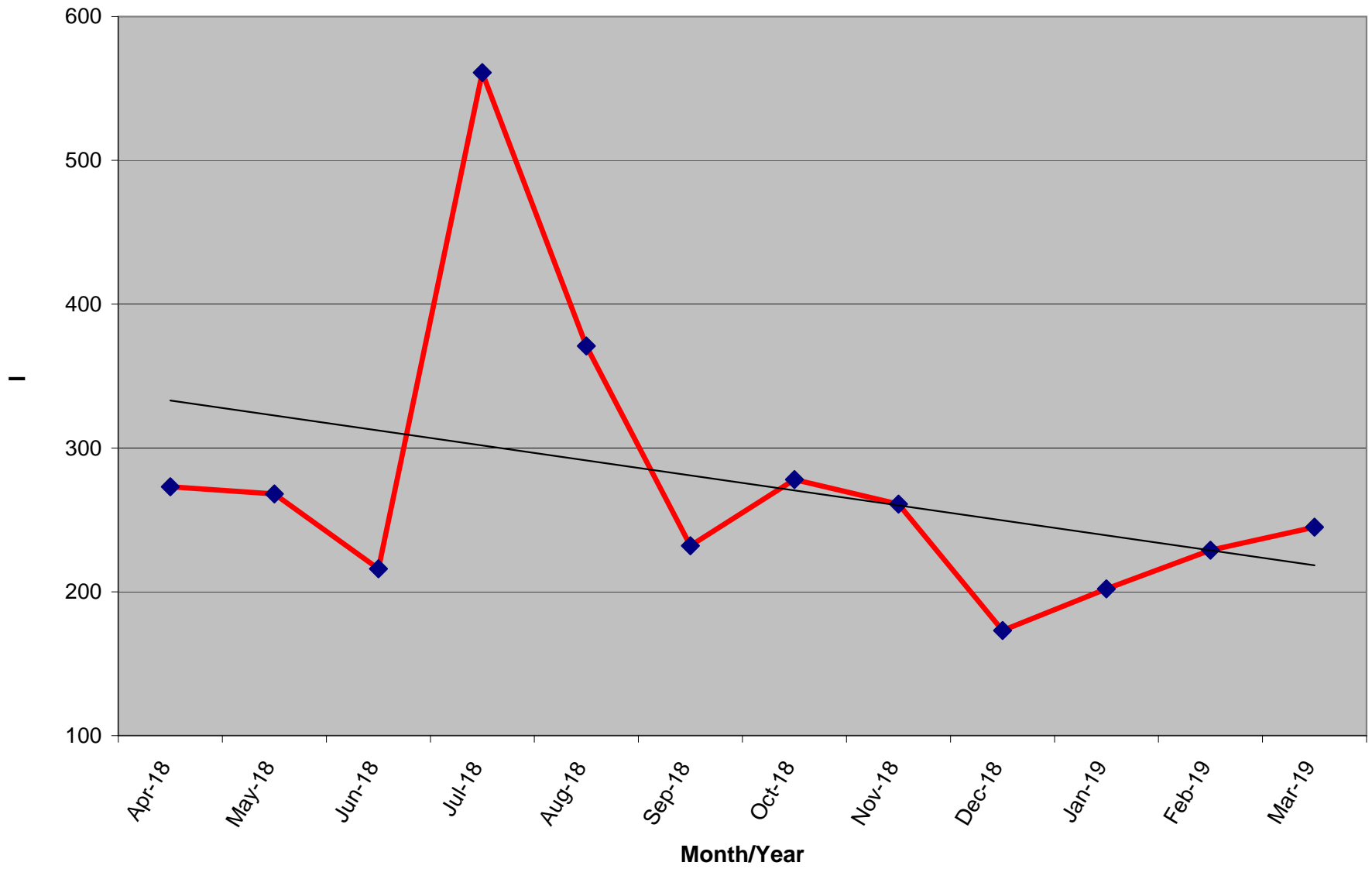
Active Donors - Past 12 Months



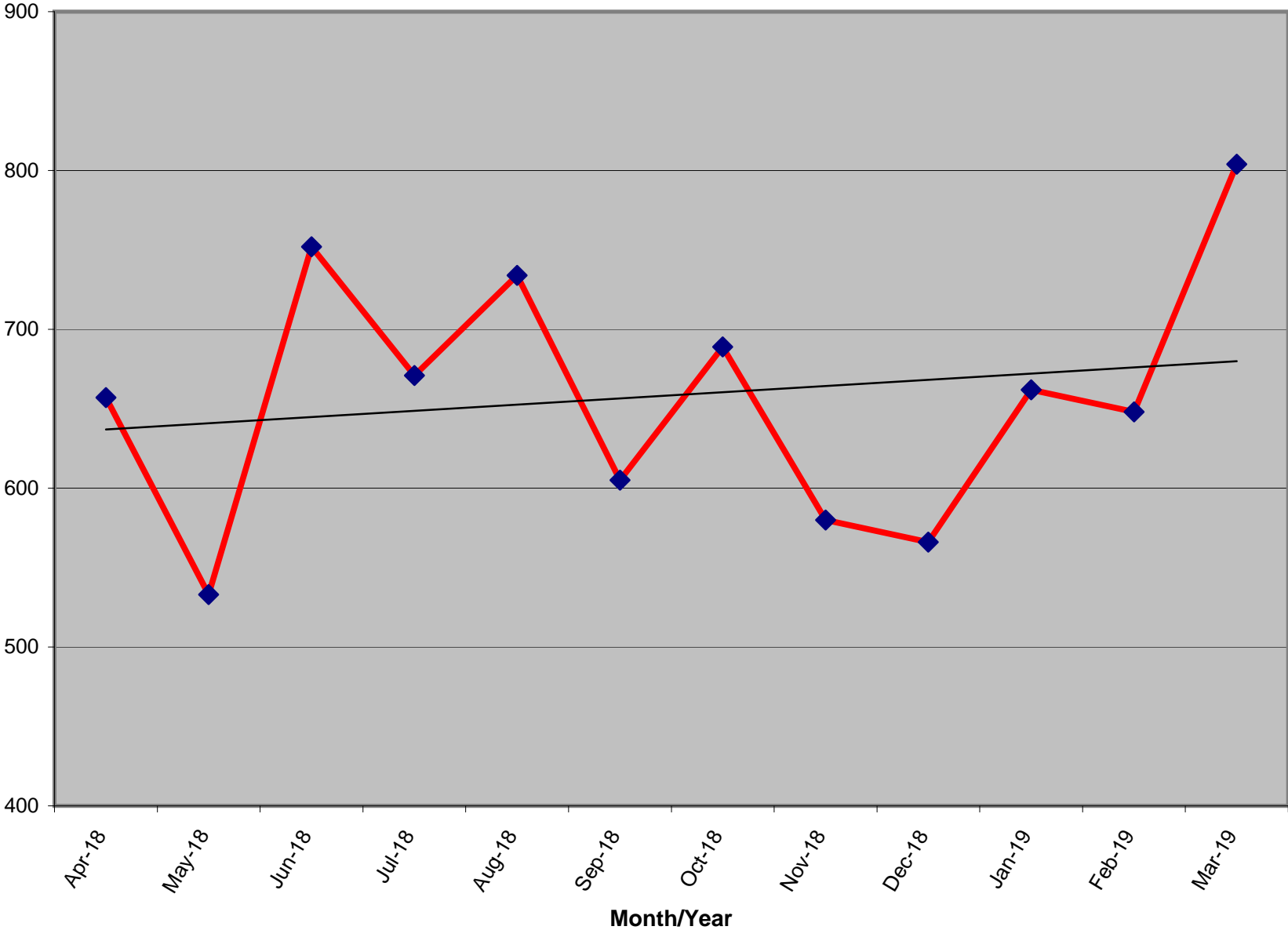
Lapsed - Dropped - Donors - Past 12 Months



New Donors Past 12 Months



Renew Donors - Past 12 Months



% OF ACTIVE MEMBERS VS. REGISTERED LIBERTARIAN VOTERS BY STATE

STATE	TI Reg Voters	Reg Lib	% Reg L to TI Reg	Total Active By State	Active to Registered
AK	520,646	7,593	1.46%	68	0.90%
AL	3,303,122	0	n/a	201	n/a
AR	1,744,141	348	0.02%	101	29.02%
AZ	3,662,382	31,554	0.86%	327	1.04%
CA	25,259,865	153,348	0.61%	1,552	1.01%
CO	3,219,953	36,911	1.15%	462	1.25%
CT	2,156,316	2,959	0.14%	158	5.34%
DC	473,526	1,025	0.22%	38	3.71%
DE	715,019	1,640	0.23%	53	3.23%
FL	13,694,743	31,682	0.23%	805	2.54%
GA	6,443,457	0	n/a	417	n/a
HI	716,458	0	n/a	55	n/a
IA	1,955,058	9,331	0.48%	123	1.32%
ID	801,151	6,482	0.81%	77	1.19%
IL	8,780,685	0	n/a	489	n/a
IN	4,355,147	0	n/a	392	n/a
KS	1,611,223	13,746	0.85%	129	0.94%
KY	3,346,095	8,250	0.25%	135	1.64%
LA	2,972,024	14,569	0.49%	175	1.20%
MA	4,574,967	15,787	0.35%	249	1.58%
MD	3,903,599	20,894	0.54%	294	1.41%
ME	1,028,602	5,554	0.54%	82	1.48%
MI	7,347,955	0	n/a	453	n/a
MN	3,268,360	0	n/a	205	n/a
MO	4,123,266	0	n/a	242	n/a
MS	2,044,713	0	n/a	89	n/a

Registration totals provided by Richard Winger as of 03/19

STATE	TI Reg Voters	Reg Lib	% Reg L to TI Reg	Total Active By State	Active to Registered
MT	695,971	0	n/a	58	n/a
NC	6,571,602	36,010	0.55%	382	1.06%
ND	429,978	0	n/a	35	n/a
NE	1,195,069	13,012	1.09%	88	0.68%
NH	961,819	162	0.02%	177	109.26%
NJ	5,778,406	8,874	0.15%	317	3.57%
NM	1,220,056	7,792	0.64%	143	1.84%
NV	1,468,671	14,322	0.98%	182	1.27%
NY	12,695,762	9,757	0.08%	675	6.92%
OH	7,914,320	0	n/a	647	n/a
OK	2,112,991	8,497	0.40%	164	1.93%
OR	2,652,935	18,962	0.71%	151	0.80%
PA	8,609,880	44,848	0.52%	595	1.33%
RI	772,360	0	n/a	34	n/a
SC	3,268,076	0	n/a	213	n/a
SD	550,529	1,893	0.34%	43	2.27%
TN	4,112,566	0	n/a	325	n/a
TX	14,748,880	0	n/a	1,072	n/a
UT	1,307,119	10,927	0.84%	103	0.94%
VA	5,473,173	0	n/a	558	n/a
VT	459,719	0	n/a	33	n/a
WA	4,646,246	0	n/a	468	n/a
WI	5,842,402	0	n/a	263	n/a
WV	1,228,123	5,616	0.46%	64	1.14%
WY	262,620	2,410	0.92%	43	1.78%
XX	356,791	0	n/a	67	n/a
Totals	207,358,537	544,755	0.54%	14,271	2.62%

% OF ACTIVE MEMBERS VS. 2010 CENSUS POPULATION BY STATE

STATE	2010 Census	TI Active By State	Active to Population
AK	710,231	68	0.0096%
AL	4,779,736	201	0.0042%
AR	2,915,918	101	0.0035%
AZ	6,392,017	327	0.0051%
CA	37,253,956	1,552	0.0042%
CO	5,029,196	462	0.0092%
CT	3,574,097	158	0.0044%
DC	601,723	38	0.0063%
DE	897,934	53	0.0059%
FL	18,801,310	805	0.0043%
GA	9,687,653	417	0.0043%
HI	1,360,301	55	0.0040%
IA	3,046,355	123	0.0040%
ID	1,567,582	77	0.0049%
IL	12,830,632	489	0.0038%
IN	6,483,802	392	0.0060%
KS	2,853,118	129	0.0045%
KY	4,339,367	135	0.0031%
LA	4,533,372	175	0.0039%
MA	6,547,629	249	0.0038%
MD	5,773,552	294	0.0051%
ME	1,328,361	82	0.0062%
MI	9,883,640	453	0.0046%
MN	5,303,925	205	0.0039%
MO	5,988,927	242	0.0040%
MS	2,967,297	89	0.0030%

ACTIVE TO POPULATION BY RANK

STATE	2010 Census	TI Active By State	Active to Population
MT	989,415	58	0.0059%
NC	9,535,483	382	0.0040%
ND	672,591	35	0.0052%
NE	1,826,341	88	0.0048%
NH	1,316,470	177	0.0134%
NJ	8,791,894	317	0.0036%
NM	2,059,179	143	0.0069%
NV	2,700,551	182	0.0067%
NY	19,378,102	675	0.0035%
OH	11,536,504	647	0.0056%
OK	3,751,351	164	0.0044%
OR	3,831,074	151	0.0039%
PA	12,702,379	595	0.0047%
RI	1,052,567	34	0.0032%
SC	4,625,364	213	0.0046%
SD	814,180	43	0.0053%
TN	6,346,105	325	0.0051%
TX	25,145,561	1,072	0.0043%
UT	2,763,885	103	0.0037%
VA	8,001,024	558	0.0070%
VT	625,741	33	0.0053%
WA	6,724,540	468	0.0070%
WI	5,686,986	263	0.0046%
WV	1,852,994	64	0.0035%
WY	563,626	43	0.0076%
Totals	308,745,538	14,204	0.0046%

STATE	Rank	TI Active By State	Active to Population
NH	1	177	0.0134%
AK	2	68	0.0096%
CO	3	462	0.0092%
WY	4	43	0.0076%
VA	5	558	0.0070%
WA	6	468	0.0070%
NM	7	143	0.0069%
NV	8	182	0.0067%
DC	9	38	0.0063%
ME	10	82	0.0062%
IN	11	392	0.0060%
DE	12	53	0.0059%
MT	13	58	0.0059%
OH	14	647	0.0056%
SD	15	43	0.0053%
VT	16	33	0.0053%
ND	17	35	0.0052%
TN	18	325	0.0051%
AZ	19	327	0.0051%
MD	20	294	0.0051%
ID	21	77	0.0049%
NE	22	88	0.0048%
PA	23	595	0.0047%
WI	24	263	0.0046%
SC	25	213	0.0046%
MI	26	453	0.0046%

STATE	Rank	TI Active By State	Active to Population
KS	27	129	0.0045%
CT	28	158	0.0044%
OK	29	164	0.0044%
GA	30	417	0.0043%
FL	31	805	0.0043%
TX	32	1,072	0.0043%
AL	33	201	0.0042%
CA	34	1,552	0.0042%
HI	35	55	0.0040%
MO	36	242	0.0040%
IA	37	123	0.0040%
NC	38	382	0.0040%
OR	39	151	0.0039%
MN	40	205	0.0039%
LA	41	175	0.0039%
IL	42	489	0.0038%
MA	43	249	0.0038%
UT	44	103	0.0037%
NJ	45	317	0.0036%
NY	46	675	0.0035%
AR	47	101	0.0035%
WV	48	64	0.0035%
RI	49	34	0.0032%
KY	50	135	0.0031%
MS	51	89	0.0030%
Totals		14,204	0.0046%

** 2010 US Census Figures - does not include PR or other territories or out of US ("XX" states)*