

Libertarian National Committee - Membership Report

"Donor" Totals - Jan-20

4 Year & 12 Month Comparison

	Dec-16	Dec-17	Dec-18	Dec-19	Jan-19	Feb-19	Mar-19	Apr-19	May-19	Jun-19	Jul-19	Aug-19	Sep-19	Oct-19	Nov-19	Dec-19	Jan-20
Active w-MEM	18592	14445	14494	15711	14278	14294	14271	14187	14224	14158	13895	13991	14232	14632	15271	15711	15887
Active w/out MEM	1814	553	514	421	496	503	502	501	486	480	479	441	436	423	420	421	431
Total Active Donors	20406	14998	15008	16132	14774	14797	14773	14688	14710	14638	14374	14432	14668	15055	15691	16132	16318
Percent Change					-1.56%	0.16%	-0.16%	-0.58%	0.15%	-0.49%	-1.80%	0.40%	1.64%	2.64%	4.22%	2.81%	1.15%
Lapsed/Drop MEM	1016	1072	1184	844	1077	839	1050	871	926	856	1132	1080	732	1008	742	844	796
Lapse w/out MEM	27	23	27	26	21	15	23	24	51	17	20	50	24	26	9	26	11
Lapsed/Drop Total	1043	1095	1211	870	1098	854	1073	895	977	873	1152	1130	756	1034	751	870	807
Percent Change					-9.33%	-22.22%	25.64%	-16.59%	9.16%	-10.64%	31.96%	-1.91%	-33.10%	36.77%	-27.37%	15.85%	-7.24%
New Donors w-MEM	321	444	159	612	199	227	230	180	218	180	219	353	403	533	701	612	388
New w/out MEM	11	15	14	11	3	2	15	15	14	5	17	10	9	6	3	11	12
New Total	332	459	173	623	202	229	245	195	232	185	236	363	412	539	704	623	400
Percent Change					16.76%	13.37%	6.99%	-20.41%	18.97%	-20.26%	27.57%	53.81%	13.50%	30.83%	30.61%	-11.51%	-35.79%
Renewed w-MEM	723	651	564	672	662	628	797	607	745	610	650	823	570	875	680	672	584
Renewed w/out MEM	8	4	2	16	0	20	7	8	22	6	2	2	10	7	3	16	9
Total Renewals	731	655	566	688	662	648	804	615	767	616	652	825	580	882	683	688	593
Percent Change					16.96%	-2.11%	24.07%	-23.51%	24.72%	-19.69%	5.84%	26.53%	-29.70%	52.07%	-22.56%	0.73%	-13.81%
Total "MEM"	145814	138815	137321	141386	137535	137726	137974	138141	138361	138536	138757	139127	139520	140067	140787	141386	141798
Percent Change					0.16%	0.14%	0.18%	0.12%	0.16%	0.13%	0.16%	0.27%	0.28%	0.39%	0.51%	0.43%	0.29%
Total "LIFETIME"	2571	2618	2652	2725	2652	2658	2668	2674	2679	2686	2687	2689	2698	2709	2717	2725	2730
Total "BSM"	19003	14668	14639	15627	14385	14372	14327	14324	14288	14208	13934	13963	14139	14501	15117	15627	15791

Last Year vs. This Year

	Jan-19	Jan-20	Change	12 Mo Ave		Value
Active w-MEM	14278	15887	11.27%	14563	<u>Active Donors w-MEM =</u>	15887
Active w/out MEM	496	431	-13.10%	460	<u>Lapsed & Zero Dues MEM =</u>	125911
Total Active Donor	14774	16318	10.45%	15023	<u>Total "MEM" w-Signed Certificate =</u>	141798
Lapsed/Dropped	1098	807	-26.50%	931	<u>Member Signed Certificate =</u>	"MEM"
New Donors	202	400	98.02%	364	<u>Total "BSM" =</u>	15791
Renewals	662	593	-10.42%	696	<u>Bylaws Defined Sustaining Member =</u>	"BSM"

Jan-20 MEMBERSHIP BY STATE --- ACTIVE AND NON ACTIVE

SUSTAINING MEMBERSHIP STATE RANKINGS - "BSM"

STATE	TOTAL "MEM"	ACTIVE "MEM"	ACTIVE "SUB"	TOTAL "ACTIVE"	TOTAL "BSM"	STATE	TOTAL "MEM"	ACTIVE "MEM"	ACTIVE "SUB"	TOTAL "ACTIVE"	TOTAL "BSM"
AK	674	67	0	67	65	MT	584	71	2	73	70
AL	1904	213	2	215	215	NC	3659	439	6	445	433
AR	952	107	2	109	108	ND	257	44	4	48	43
AZ	3397	392	10	402	382	NE	687	103	1	104	103
CA	18845	1666	58	1724	1656	NH	1488	191	3	194	193
CO	4027	528	11	539	527	NJ	3075	328	10	338	322
CT	1521	185	7	192	186	NM	1221	160	2	162	158
DC	367	41	2	43	40	NV	1968	223	12	235	225
DE	424	49	4	53	49	NY	5259	782	22	804	777
FL	8593	882	35	917	886	OH	5280	706	11	717	706
GA	5992	464	9	473	459	OK	1172	173	0	173	170
HI	547	52	4	56	52	OR	2284	200	11	211	196
IA	1127	140	2	142	138	PA	6104	653	15	668	651
ID	845	80	2	82	79	RI	323	43	2	45	43
IL	4526	516	13	529	511	SC	2079	244	3	247	247
IN	3508	440	9	449	437	SD	291	48	1	49	46
KS	1217	130	1	131	128	TN	2852	390	3	393	383
KY	1280	150	5	155	148	TX	10081	1243	34	1277	1239
LA	1263	187	3	190	186	UT	1304	143	6	149	139
MA	2860	278	10	288	275	VA	4946	587	13	600	583
MD	2463	304	15	319	302	VT	414	43	4	47	43
ME	844	93	0	93	92	WA	4745	533	16	549	535
MI	5336	506	12	518	506	WI	2177	265	9	274	261
MN	2155	255	3	258	247	WV	639	74	0	74	75
MO	2426	260	9	269	263	WY	341	46	0	46	47
MS	761	94	3	97	94	XX	714	76	10	86	72

State	Total BSM	Rank	State	Total BSM	Rank
CA	1656	1	NH	193	27
TX	1239	2	CT	186	28
FL	886	3	LA	186	29
NY	777	4	OK	170	30
OH	706	5	NM	158	31
PA	651	6	KY	148	32
VA	583	7	UT	139	33
WA	535	8	IA	138	34
CO	527	9	KS	128	35
IL	511	10	AR	108	36
MI	506	11	NE	103	37
GA	459	12	MS	94	38
IN	437	13	ME	92	39
NC	433	14	ID	79	40
TN	383	15	WV	75	41
AZ	382	16	MT	70	42
NJ	322	17	AK	65	43
MD	302	18	HI	52	44
MA	275	19	DE	49	45
MO	263	20	WY	47	46
WI	261	21	SD	46	47
MN	247	22	ND	43	48
SC	247	23	RI	43	49
NV	225	24	VT	43	50
AL	215	25	DC	40	51
OR	196	26	XX	72	52
			Total:	15791	

TOTAL "MEM"	ACTIVE "MEM"	ACTIVE "SUB"	TOTAL "ACTIVE"	TOTAL "BSM"
141798	15887	431	16318	15791

DEFINITIONS: MEM = Member Signed Certificate

Total MEM = Total # Constituents Per State w-Member Signed Certificate

ACTIVE MEM = Current Dues Paying or Lifetime Donor w-Signed Certificate

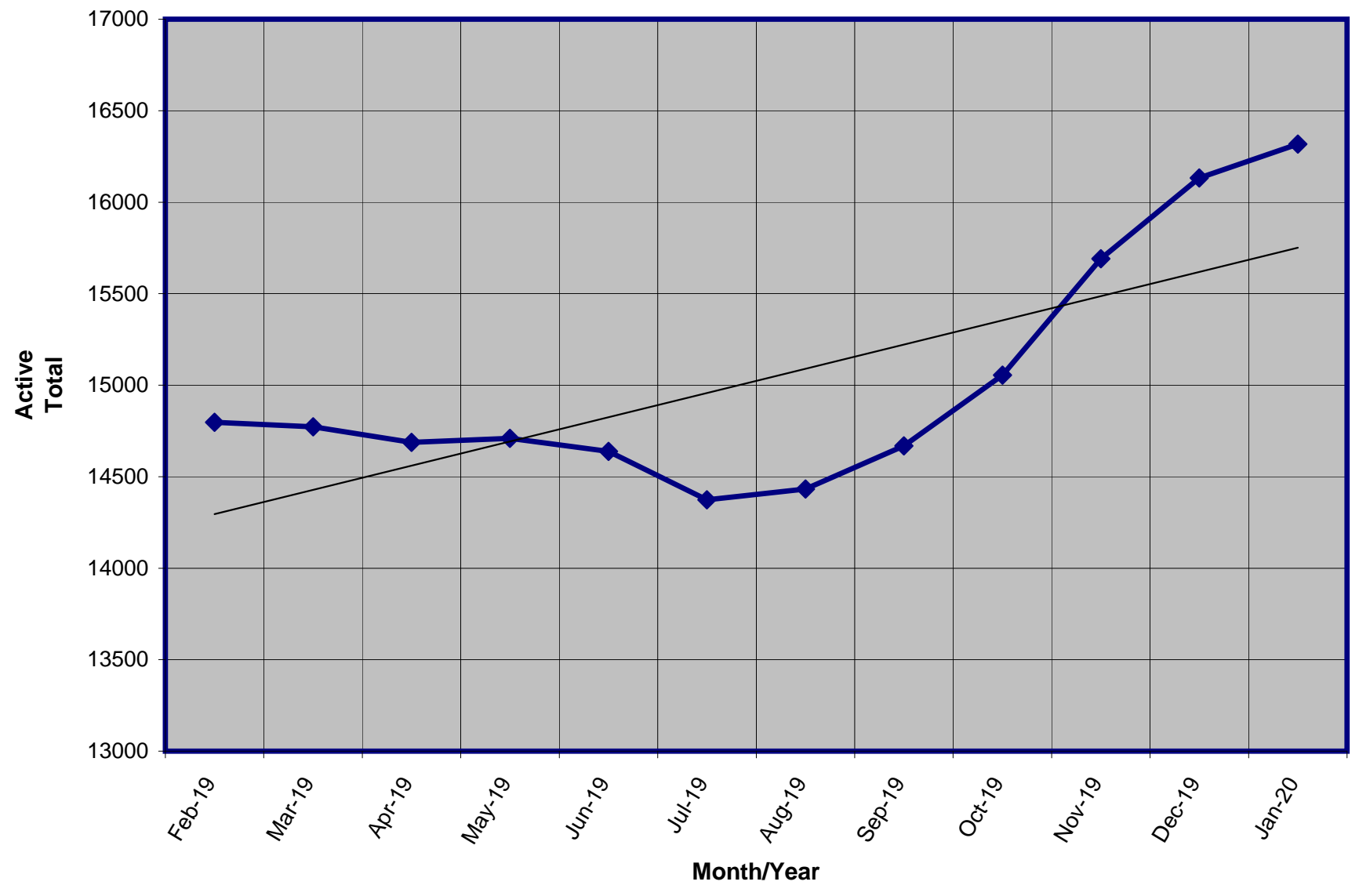
ACTIVE SUB (ACTIVE NON MEM) = Current Dues Paying or Lifetime Donors Who Have NOT Signed the Certificate (Formerly Called "Subscriber")

TOTAL ACTIVE = Current Dues Paying or Lifetime Donor

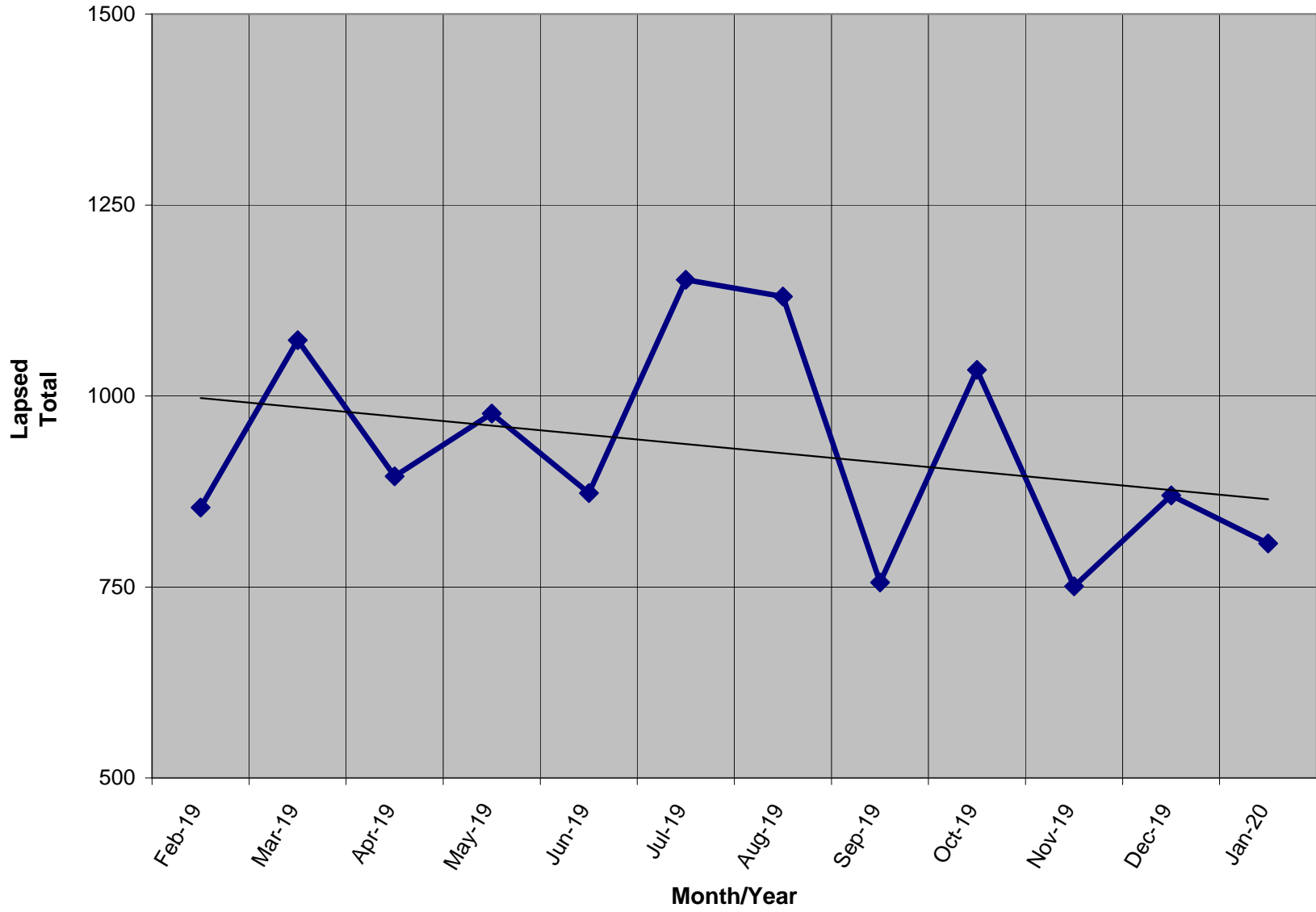
BSM = By Law Definition of "Sustaining Member" and number used for delegate count

(Art 5-3: "Sustaining member" is any Party member who has given at least \$25 to the Party in the prior twelve months, or who is a life member.)

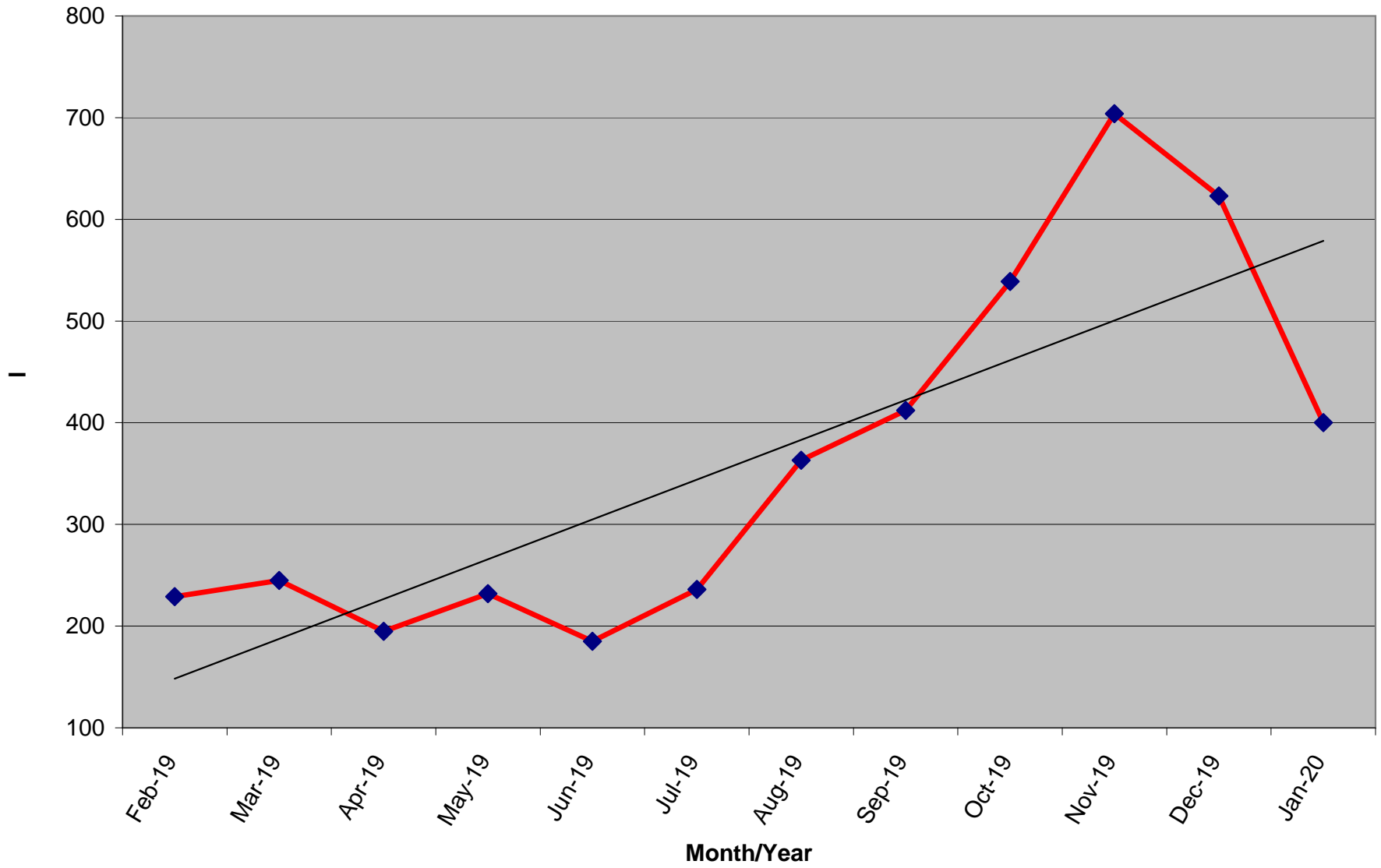
Active Donors - Past 12 Months



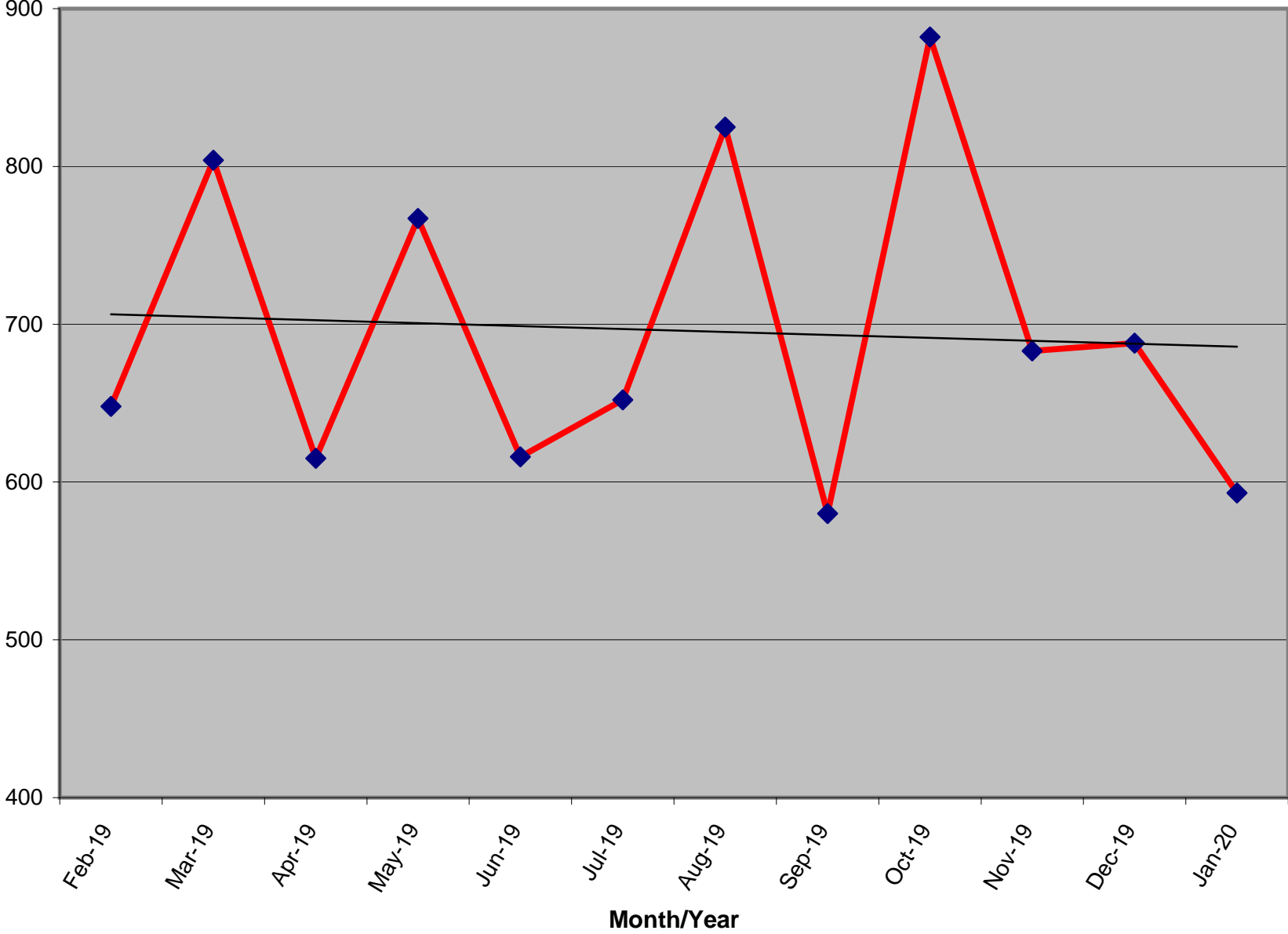
Lapsed - Dropped - Donors - Past 12 Months



New Donors Past 12 Months



Renew Donors - Past 12 Months



% OF ACTIVE MEMBERS VS. REGISTERED LIBERTARIAN VOTERS BY STATE

STATE	TI Reg Voters	Reg Lib	% Reg L to TI Reg	Total Active By State	Active to Registered
AK	520,646	7,593	1.46%	67	0.88%
AL	3,303,122	0	n/a	213	n/a
AR	1,744,141	348	0.02%	107	30.75%
AZ	3,774,016	32,056	0.85%	392	1.22%
CA	20,328,636	171,579	0.84%	1,666	0.97%
CO	3,219,953	36,911	1.15%	528	1.43%
CT	2,156,316	2,959	0.14%	185	6.25%
DC	505,465	1,781	0.35%	41	2.30%
DE	715,019	1,640	0.23%	49	2.99%
FL	13,694,743	31,682	0.23%	882	2.78%
GA	6,443,457	0	n/a	464	n/a
HI	716,458	0	n/a	52	n/a
IA	1,955,058	9,331	0.48%	140	1.50%
ID	801,151	6,482	0.81%	80	1.23%
IL	8,780,685	0	n/a	516	n/a
IN	4,355,147	0	n/a	440	n/a
KS	1,611,223	13,746	0.85%	130	0.95%
KY	3,346,095	8,250	0.25%	150	1.82%
LA	2,972,024	14,569	0.49%	187	1.28%
MA	4,574,967	15,787	0.35%	278	1.76%
MD	3,903,599	20,894	0.54%	304	1.45%
ME	1,028,602	5,554	0.54%	93	1.67%
MI	7,347,955	0	n/a	506	n/a
MN	3,268,360	0	n/a	255	n/a
MO	4,123,266	0	n/a	260	n/a
MS	2,044,713	0	n/a	94	n/a

Registration totals provided by Richard Winger - last update 01/20

STATE	TI Reg Voters	Reg Lib	% Reg L to TI Reg	Total Active By State	Active to Registered
MT	695,971	0	n/a	71	n/a
NC	6,571,602	36,010	0.55%	439	1.22%
ND	429,978	0	n/a	44	n/a
NE	1,203,872	15,029	1.25%	103	0.69%
NH	961,819	162	0.02%	191	117.90%
NJ	5,778,406	8,874	0.15%	328	3.70%
NM	1,220,056	7,792	0.64%	160	2.05%
NV	1,543,822	15,486	1.00%	223	1.44%
NY	12,695,762	9,757	0.08%	782	8.01%
OH	7,914,320	0	n/a	706	n/a
OK	2,090,107	11,171	0.53%	173	1.55%
OR	2,652,935	18,962	0.71%	200	1.05%
PA	8,609,880	44,848	0.52%	653	1.46%
RI	772,360	0	n/a	43	n/a
SC	3,268,076	0	n/a	244	n/a
SD	550,529	1,893	0.34%	48	2.54%
TN	4,112,566	0	n/a	390	n/a
TX	14,748,880	0	n/a	1,243	n/a
UT	1,446,211	15,393	1.06%	143	0.93%
VA	5,473,173	0	n/a	587	n/a
VT	459,719	0	n/a	43	n/a
WA	4,646,246	0	n/a	533	n/a
WI	5,842,402	0	n/a	265	n/a
WV	1,228,123	5,616	0.46%	74	1.32%
WY	262,620	2,410	0.92%	46	1.91%
XX	356,791	0	n/a	76	n/a
Totals	202,771,043	574,565	0.57%	15,887	2.77%

% OF ACTIVE MEMBERS VS. 2010 CENSUS POPULATION BY STATE

STATE	2010 Census	TI Active By State	Active to Population
AK	710,231	67	0.0094%
AL	4,779,736	213	0.0045%
AR	2,915,918	107	0.0037%
AZ	6,392,017	392	0.0061%
CA	37,253,956	1,666	0.0045%
CO	5,029,196	528	0.0105%
CT	3,574,097	185	0.0052%
DC	601,723	41	0.0068%
DE	897,934	49	0.0055%
FL	18,801,310	882	0.0047%
GA	9,687,653	464	0.0048%
HI	1,360,301	52	0.0038%
IA	3,046,355	140	0.0046%
ID	1,567,582	80	0.0051%
IL	12,830,632	516	0.0040%
IN	6,483,802	440	0.0068%
KS	2,853,118	130	0.0046%
KY	4,339,367	150	0.0035%
LA	4,533,372	187	0.0041%
MA	6,547,629	278	0.0042%
MD	5,773,552	304	0.0053%
ME	1,328,361	93	0.0070%
MI	9,883,640	506	0.0051%
MN	5,303,925	255	0.0048%
MO	5,988,927	260	0.0043%
MS	2,967,297	94	0.0032%

ACTIVE TO POPULATION BY RANK

STATE	2010 Census	TI Active By State	Active to Population
MT	989,415	71	0.0072%
NC	9,535,483	439	0.0046%
ND	672,591	44	0.0065%
NE	1,826,341	103	0.0056%
NH	1,316,470	191	0.0145%
NJ	8,791,894	328	0.0037%
NM	2,059,179	160	0.0078%
NV	2,700,551	223	0.0083%
NY	19,378,102	782	0.0040%
OH	11,536,504	706	0.0061%
OK	3,751,351	173	0.0046%
OR	3,831,074	200	0.0052%
PA	12,702,379	653	0.0051%
RI	1,052,567	43	0.0041%
SC	4,625,364	244	0.0053%
SD	814,180	48	0.0059%
TN	6,346,105	390	0.0061%
TX	25,145,561	1,243	0.0049%
UT	2,763,885	143	0.0052%
VA	8,001,024	587	0.0073%
VT	625,741	43	0.0069%
WA	6,724,540	533	0.0079%
WI	5,686,986	265	0.0047%
WV	1,852,994	74	0.0040%
WY	563,626	46	0.0082%
Totals	308,745,538	15,811	0.0051%

STATE	Rank	TI Active By State	Active to Population
NH	1	191	0.0145%
CO	2	528	0.0105%
AK	3	67	0.0094%
NV	4	223	0.0083%
WY	5	46	0.0082%
WA	6	533	0.0079%
NM	7	160	0.0078%
VA	8	587	0.0073%
MT	9	71	0.0072%
ME	10	93	0.0070%
VT	11	43	0.0069%
DC	12	41	0.0068%
IN	13	440	0.0068%
ND	14	44	0.0065%
TN	15	390	0.0061%
AZ	16	392	0.0061%
OH	17	706	0.0061%
SD	18	48	0.0059%
NE	19	103	0.0056%
DE	20	49	0.0055%
SC	21	244	0.0053%
MD	22	304	0.0053%
OR	23	200	0.0052%
CT	24	185	0.0052%
UT	25	143	0.0052%
PA	26	653	0.0051%

STATE	Rank	TI Active By State	Active to Population
MI	27	506	0.0051%
ID	28	80	0.0051%
TX	29	1,243	0.0049%
MN	30	255	0.0048%
GA	31	464	0.0048%
FL	32	882	0.0047%
WI	33	265	0.0047%
OK	34	173	0.0046%
NC	35	439	0.0046%
IA	36	140	0.0046%
KS	37	130	0.0046%
CA	38	1,666	0.0045%
AL	39	213	0.0045%
MO	40	260	0.0043%
MA	41	278	0.0042%
LA	42	187	0.0041%
RI	43	43	0.0041%
NY	44	782	0.0040%
IL	45	516	0.0040%
WV	46	74	0.0040%
HI	47	52	0.0038%
NJ	48	328	0.0037%
AR	49	107	0.0037%
KY	50	150	0.0035%
MS	51	94	0.0032%
Totals		15,811	0.0051%

** 2010 US Census Figures - does not include PR or other territories or out of US ("XX" states)*