

# Libertarian National Committee - Membership Report

## "Donor" Totals - Jan-15

### 4 Year & 12 Month Comparison

	Dec-11	Dec-12	Dec-13	Dec-14	Jan-14	Feb-14	Mar-14	Apr-14	May-14	Jun-14	Jul-14	Aug-14	Sep-14	Oct-14	Nov-14	Dec-14	Jan-15
Active w-MEM	13468	13749	13670	12053	13615	13693	13978	14075	14212	14136	14260	14134	13734	13442	12947	12053	11902
Active w/out MEM	859	1194	967	747	1084	1095	1113	1101	1154	1146	1023	1018	990	944	930	747	662
<b>Total Active Donors</b>	<b>14327</b>	<b>14943</b>	<b>14637</b>	<b>12800</b>	<b>14699</b>	<b>14788</b>	<b>15091</b>	<b>15176</b>	<b>15366</b>	<b>15282</b>	<b>15283</b>	<b>15152</b>	<b>14724</b>	<b>14386</b>	<b>13877</b>	<b>12800</b>	<b>12564</b>
<b>Percent Change</b>	<b>-4.92%</b>	<b>4.30%</b>	<b>-2.05%</b>	<b>-12.55%</b>	<b>0.42%</b>	<b>0.61%</b>	<b>2.05%</b>	<b>0.56%</b>	<b>1.25%</b>	<b>-0.55%</b>	<b>0.01%</b>	<b>-0.86%</b>	<b>-2.82%</b>	<b>-2.30%</b>	<b>-3.54%</b>	<b>-7.76%</b>	<b>-1.84%</b>
Lapsed/Drop MEM	1379	1381	1245	1733	870	637	758	663	634	594	608	637	945	1385	1235	1733	863
Lapse w/out MEM	74	76	82	203	58	24	41	39	26	44	27	31	75	98	52	203	138
<b>Lapsed/Drop Total</b>	<b>1453</b>	<b>1457</b>	<b>1327</b>	<b>1936</b>	<b>928</b>	<b>661</b>	<b>799</b>	<b>702</b>	<b>660</b>	<b>638</b>	<b>635</b>	<b>668</b>	<b>1020</b>	<b>1483</b>	<b>1287</b>	<b>1936</b>	<b>1001</b>
<b>Percent Change</b>	<b>65.49%</b>	<b>0.28%</b>	<b>-8.92%</b>	<b>45.89%</b>	<b>-30.07%</b>	<b>-28.77%</b>	<b>20.88%</b>	<b>-12.14%</b>	<b>-5.98%</b>	<b>-3.33%</b>	<b>-0.47%</b>	<b>5.20%</b>	<b>52.69%</b>	<b>45.39%</b>	<b>-13.22%</b>	<b>50.43%</b>	<b>-48.30%</b>
New Donors w-MEM	256	240	267	110	234	199	321	270	219	125	148	153	94	235	208	110	126
New w/out MEM	26	38	168	6	128	18	25	8	37	27	5	18	17	10	2	6	8
<b>New Total</b>	<b>282</b>	<b>278</b>	<b>435</b>	<b>116</b>	<b>362</b>	<b>217</b>	<b>346</b>	<b>278</b>	<b>256</b>	<b>152</b>	<b>153</b>	<b>171</b>	<b>111</b>	<b>245</b>	<b>210</b>	<b>116</b>	<b>134</b>
<b>Percent Change</b>	<b>80.77%</b>	<b>-1.42%</b>	<b>56.47%</b>	<b>-73.33%</b>	<b>-16.78%</b>	<b>-40.06%</b>	<b>59.45%</b>	<b>-19.65%</b>	<b>-7.91%</b>	<b>-40.63%</b>	<b>0.66%</b>	<b>11.76%</b>	<b>-35.09%</b>	<b>120.72%</b>	<b>-14.29%</b>	<b>-44.76%</b>	<b>15.52%</b>
Renewed w-MEM	900	708	966	729	581	516	722	490	552	393	584	358	451	858	532	729	586
Renewed w/out MEM	61	57	55	14	47	17	34	19	42	9	-101	8	30	42	36	14	45
<b>Total Renewals</b>	<b>961</b>	<b>765</b>	<b>1021</b>	<b>743</b>	<b>628</b>	<b>533</b>	<b>756</b>	<b>509</b>	<b>594</b>	<b>402</b>	<b>483</b>	<b>366</b>	<b>481</b>	<b>900</b>	<b>568</b>	<b>743</b>	<b>631</b>
<b>Percent Change</b>	<b>-3.13%</b>	<b>-20.40%</b>	<b>33.46%</b>	<b>-27.23%</b>	<b>-38.49%</b>	<b>-15.13%</b>	<b>41.84%</b>	<b>-32.67%</b>	<b>16.70%</b>	<b>-32.32%</b>	<b>20.15%</b>	<b>-24.22%</b>	<b>31.42%</b>	<b>87.11%</b>	<b>-36.89%</b>	<b>30.81%</b>	<b>-15.07%</b>
<b>Total "MEM"</b>	<b>121850</b>	<b>126900</b>	<b>130507</b>	<b>133400</b>	<b>130841</b>	<b>131091</b>	<b>131396</b>	<b>131735</b>	<b>131994</b>	<b>132151</b>	<b>132475</b>	<b>132622</b>	<b>132736</b>	<b>133118</b>	<b>133314</b>	<b>133400</b>	<b>133568</b>
<b>Percent Change</b>	<b>1.77%</b>	<b>4.14%</b>	<b>2.84%</b>	<b>2.22%</b>	<b>0.26%</b>	<b>0.19%</b>	<b>0.23%</b>	<b>0.26%</b>	<b>0.20%</b>	<b>0.12%</b>	<b>0.25%</b>	<b>0.11%</b>	<b>0.09%</b>	<b>0.29%</b>	<b>0.15%</b>	<b>0.06%</b>	<b>0.13%</b>
<b>Total "LIFETIME"</b>	<b>2142</b>	<b>2208</b>	<b>2295</b>	<b>2446</b>	<b>2304</b>	<b>2308</b>	<b>2309</b>	<b>2312</b>	<b>2319</b>	<b>2377</b>	<b>2441</b>	<b>2443</b>	<b>2445</b>	<b>2445</b>	<b>2445</b>	<b>2446</b>	<b>2447</b>
<b>Total "BSM"</b>	<b>13589</b>	<b>13824</b>	<b>13869</b>	<b>12526</b>	<b>13836</b>	<b>13764</b>	<b>13919</b>	<b>14027</b>	<b>14189</b>	<b>14092</b>	<b>14158</b>	<b>13963</b>	<b>13533</b>	<b>13437</b>	<b>12778</b>	<b>12526</b>	<b>12294</b>

### Last Year vs. This Year

	Jan-14	Jan-15	Change	12 Mo Ave		
Active w-MEM	13615	11902	-12.58%	13547	<u>Active Donors w-MEM =</u>	11902
Active w/out MEM	1084	662	-38.93%	994	<u>Lapsed &amp; Zero Dues MEM =</u>	121666
<b>Total Active Donors</b>	<b>14699</b>	<b>12564</b>	<b>-14.52%</b>	<b>14541</b>	<u>Total "MEM" w-Signed Certificate =</u>	<b>133568</b>
Lapsed/Dropped	928	1001	7.87%	958	<u>Member Signed Certificate =</u>	<b>"MEM"</b>
New Donors	362	134	-62.98%	199	<u>Total "BSM" =</u>	12294
Renewals	628	631	0.48%	581	<u>Bylaws Defined Sustaining Member =</u>	<b>"BSM"</b>

**Jan-15 MEMBERSHIP BY STATE --- ACTIVE AND NON ACTIVE**

<u>STATE</u>	<u>TOTAL "MEM"</u>	<u>ACTIVE "MEM"</u>	<u>ACTIVE "SUB"</u>	<u>TOTAL "ACTIVE"</u>	<u>TOTAL "BSM"</u>
AK	666	64	1	65	65
AL	1699	151	6	157	156
AR	878	82	2	84	86
AZ	3158	279	19	298	292
CA	19256	1584	91	1675	1612
CO	3662	371	22	393	377
CT	1471	155	9	164	158
DC	354	28	4	32	29
DE	380	29	4	33	29
FL	7912	679	56	735	688
GA	5854	358	18	376	368
HI	531	54	3	57	53
IA	1009	98	4	102	97
ID	754	50	2	52	50
IL	4451	411	24	435	424
IN	3129	325	15	340	348
KS	1221	146	4	150	149
KY	1164	106	5	111	115
LA	1066	117	6	123	126
MA	2808	191	9	200	196
MD	2427	244	16	260	247
ME	799	60	3	63	59
MI	5136	390	10	400	405
MN	2010	170	10	180	181
MO	2329	231	19	250	240
MS	697	94	2	96	96

<u>STATE</u>	<u>TOTAL "MEM"</u>	<u>ACTIVE "MEM"</u>	<u>ACTIVE "SUB"</u>	<u>TOTAL "ACTIVE"</u>	<u>TOTAL "BSM"</u>
MT	509	53	5	58	55
NC	3321	308	12	320	320
ND	219	36	1	37	38
NE	651	77	3	80	79
NH	1342	123	6	129	126
NJ	3037	247	17	264	253
NM	1113	91	9	100	95
NV	1907	185	8	193	186
NY	4917	512	38	550	533
OH	5157	549	18	567	578
OK	1026	86	2	88	87
OR	2200	152	19	171	156
PA	5847	470	26	496	485
RI	307	24	1	25	23
SC	1692	150	5	155	158
SD	252	39	1	40	39
TN	2375	210	3	213	215
TX	8931	832	53	885	884
UT	1134	79	8	87	80
VA	4634	541	19	560	567
VT	395	28	3	31	29
WA	4310	331	21	352	341
WI	1913	173	10	183	176
WV	593	49	1	50	49
WY	316	28	1	29	27
XX	649	62	8	70	69

	<u>TOTAL "MEM"</u>	<u>ACTIVE "MEM"</u>	<u>ACTIVE "SUB"</u>	<u>TOTAL "ACTIVE"</u>	<u>TOTAL "BSM"</u>
<b>TOTALS</b>	<b>133568</b>	<b>11902</b>	<b>662</b>	<b>12564</b>	<b>12294</b>

**SUSTAINING MEMBERSHIP STATE RANKINGS - "BSM"**

<u>State</u>	<u>Total BSM</u>	<u>Rank</u>	<u>State</u>	<u>Total BSM</u>	<u>Rank</u>
CA	1612	1	OR	156	27
TX	884	2	KS	149	28
FL	688	3	LA	126	29
OH	578	4	NH	126	30
VA	567	5	KY	115	31
NY	533	6	IA	97	32
PA	485	7	MS	96	33
IL	424	8	NM	95	34
MI	405	9	OK	87	35
CO	377	10	AR	86	36
GA	368	11	UT	80	37
IN	348	12	NE	79	38
WA	341	13	AK	65	39
NC	320	14	ME	59	40
AZ	292	15	MT	55	41
NJ	253	16	HI	53	42
MD	247	17	ID	50	43
MO	240	18	WV	49	44
TN	215	19	SD	39	45
MA	196	20	ND	38	46
NV	186	21	DC	29	47
MN	181	22	DE	29	48
WI	176	23	VT	29	49
CT	158	24	WY	27	50
SC	158	25	RI	23	51
AL	156	26	XX	69	52

**DEFINITIONS: MEM = Member Signed Certificate**

**Total MEM = Total # Constituents Per State w-Member Signed Certificate**

**ACTIVE MEM = Current Dues Paying or Lifetime Donor w-Signed Certificate**

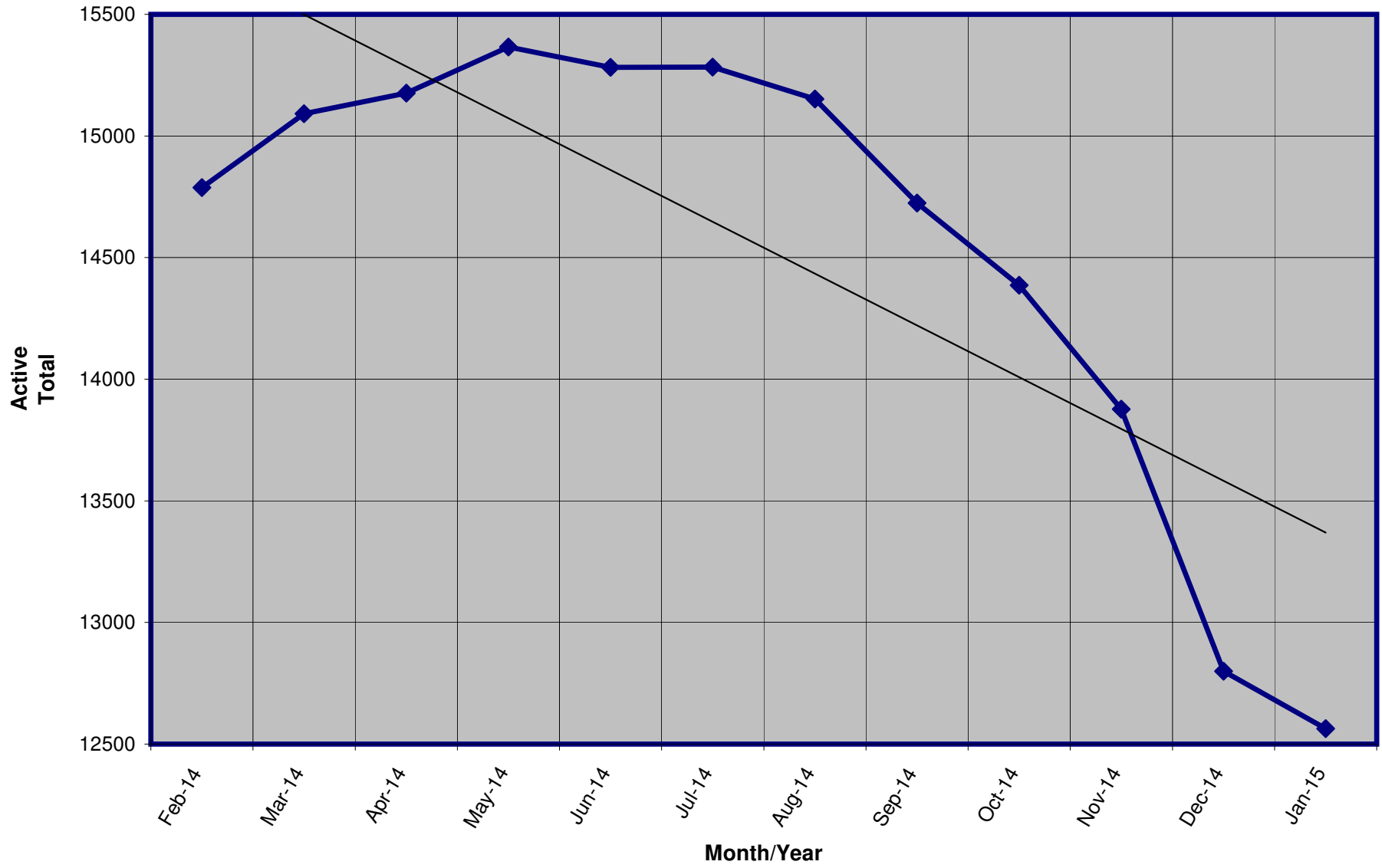
**ACTIVE SUB (ACTIVE NON MEM) = Current Dues Paying or Lifetime Donors Who Have NOT Signed the Certificate (Formerly Called "Subscriber")**

**TOTAL ACTIVE = Current Dues Paying or Lifetime Donor**

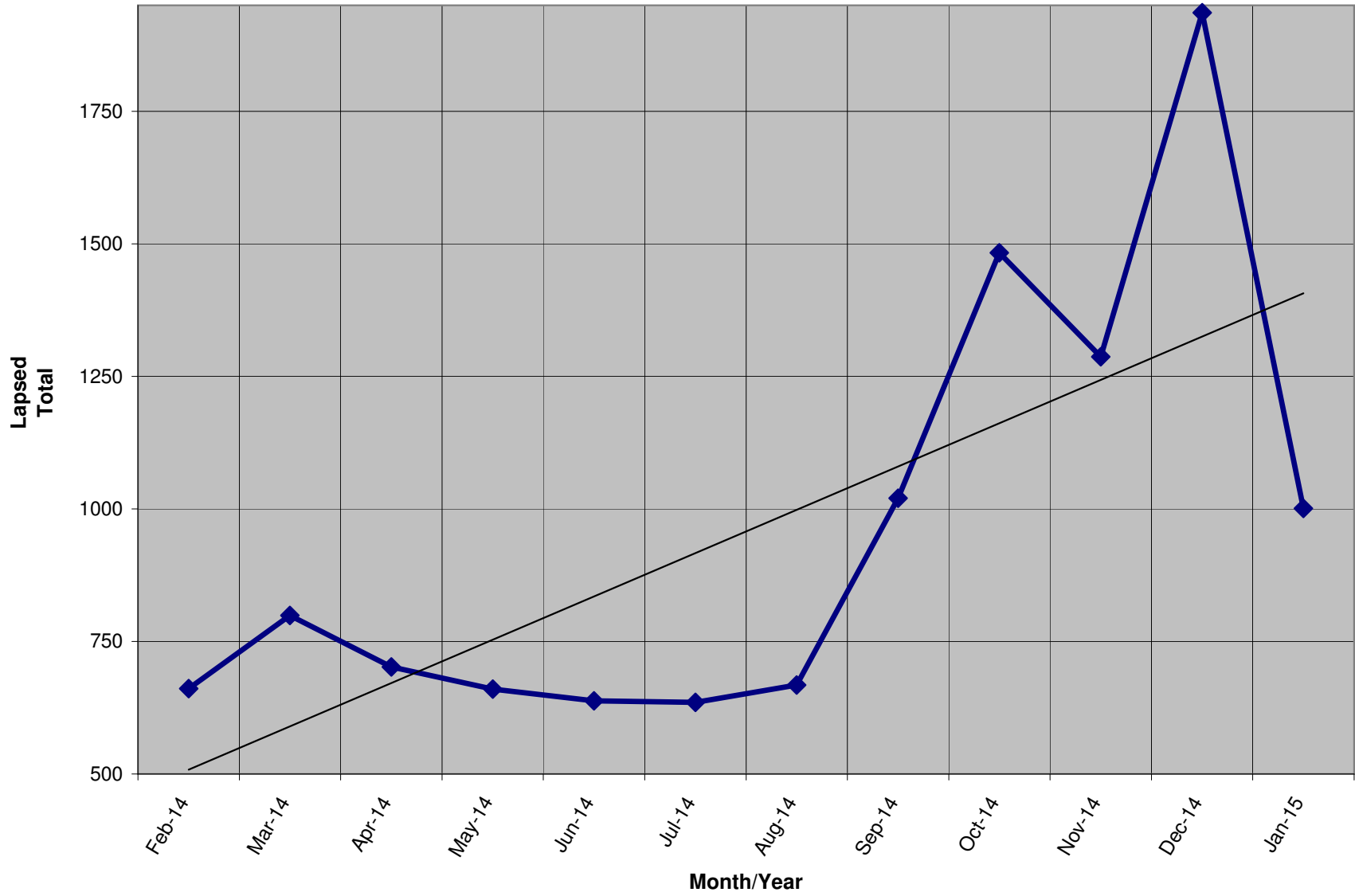
**BSM = By Law Definition of "Sustaining Member" and number used for delegate count**

**(Art 5-3: "Sustaining member" is any Party member who has given at least \$25 to the Party in the prior twelve months, or who is a life member.)**

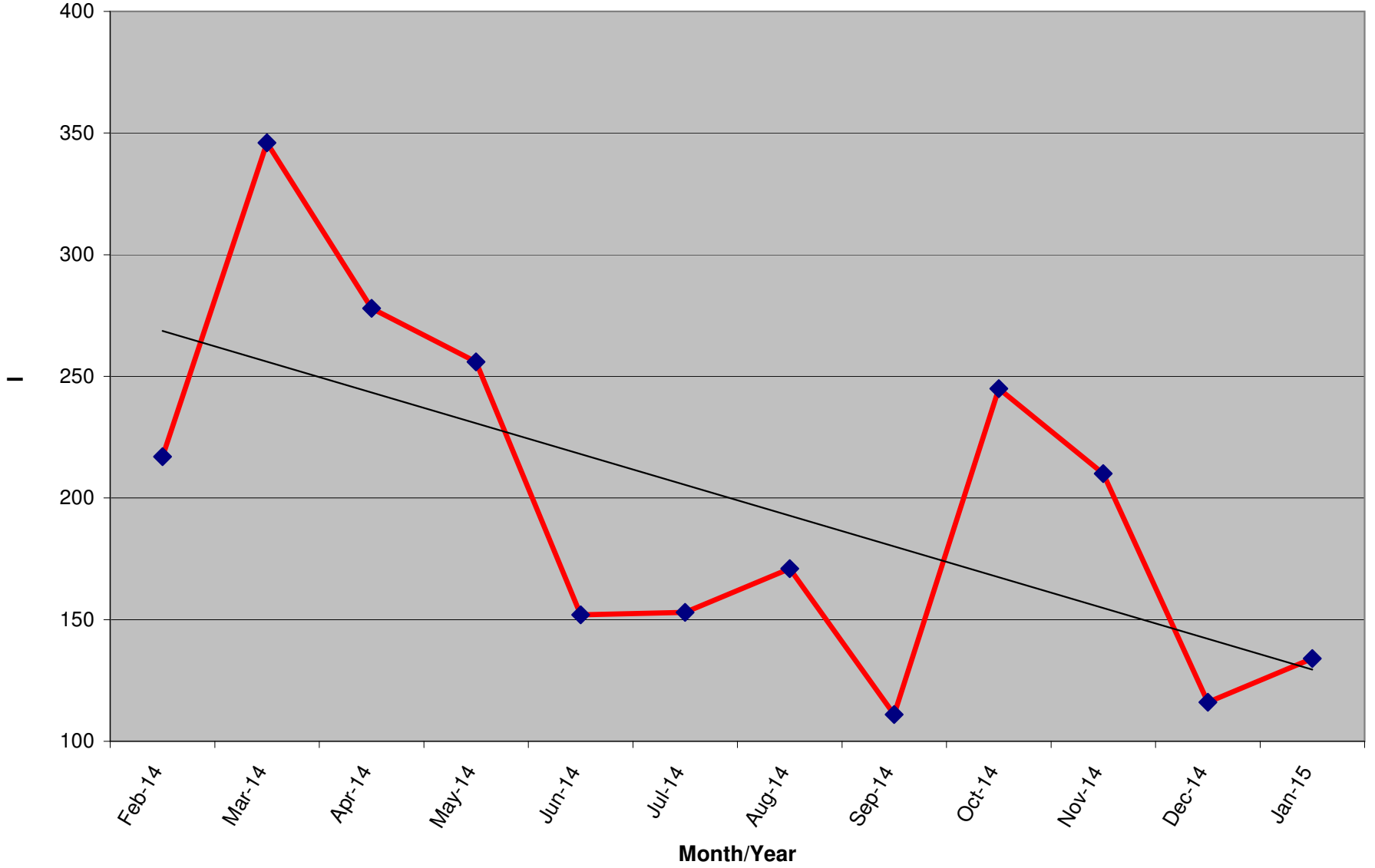
Active Donors - Past 12 Months



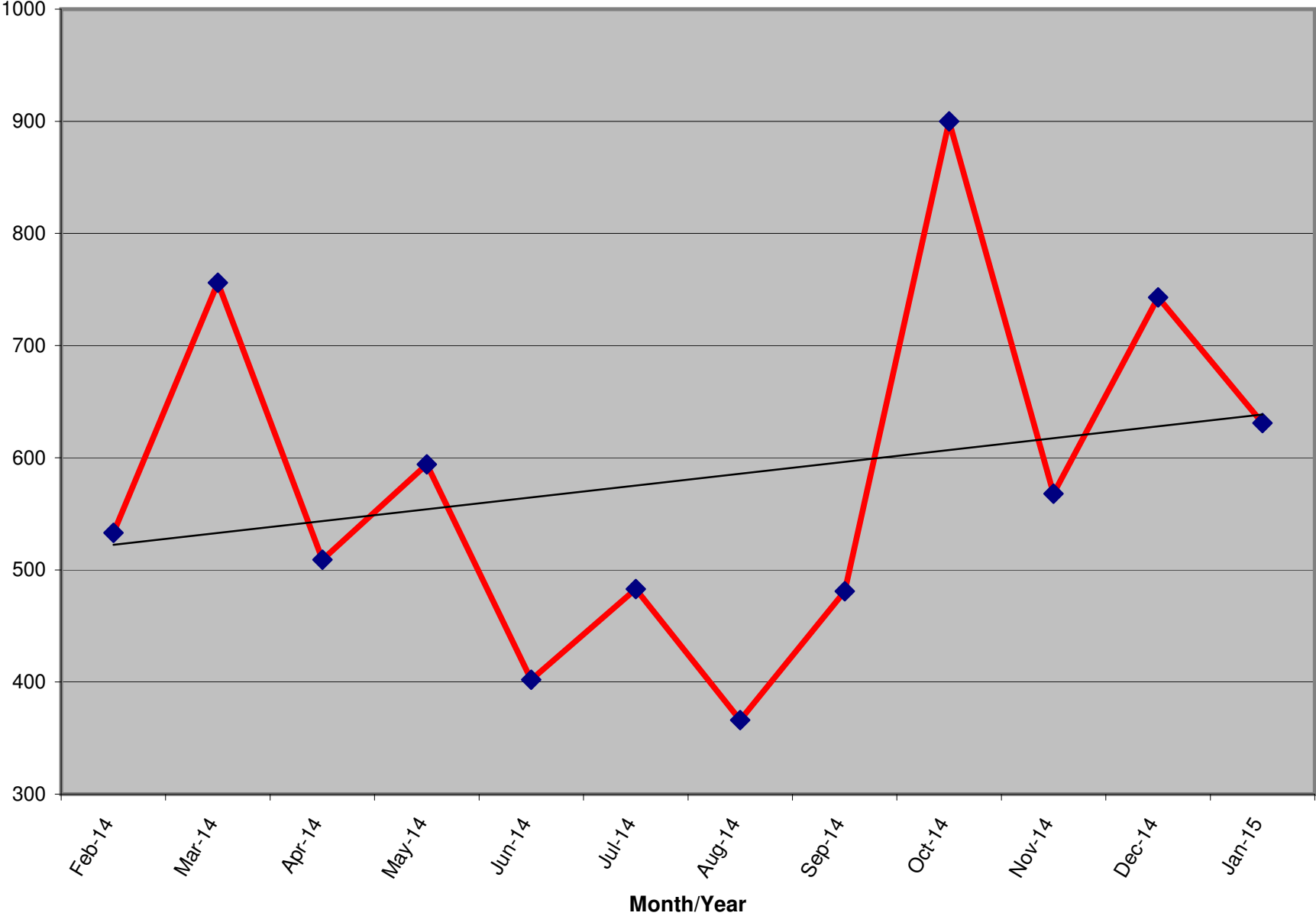
Lapsed - Dropped - Donors - Past 12 Months



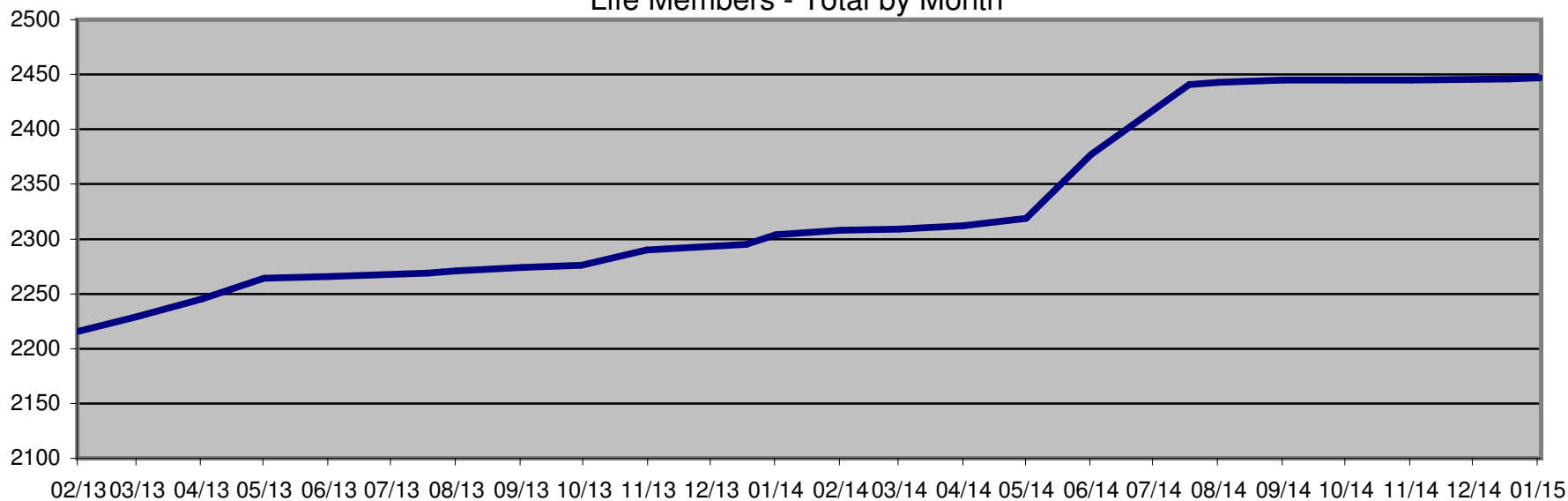
**New Donors Past 12 Months**



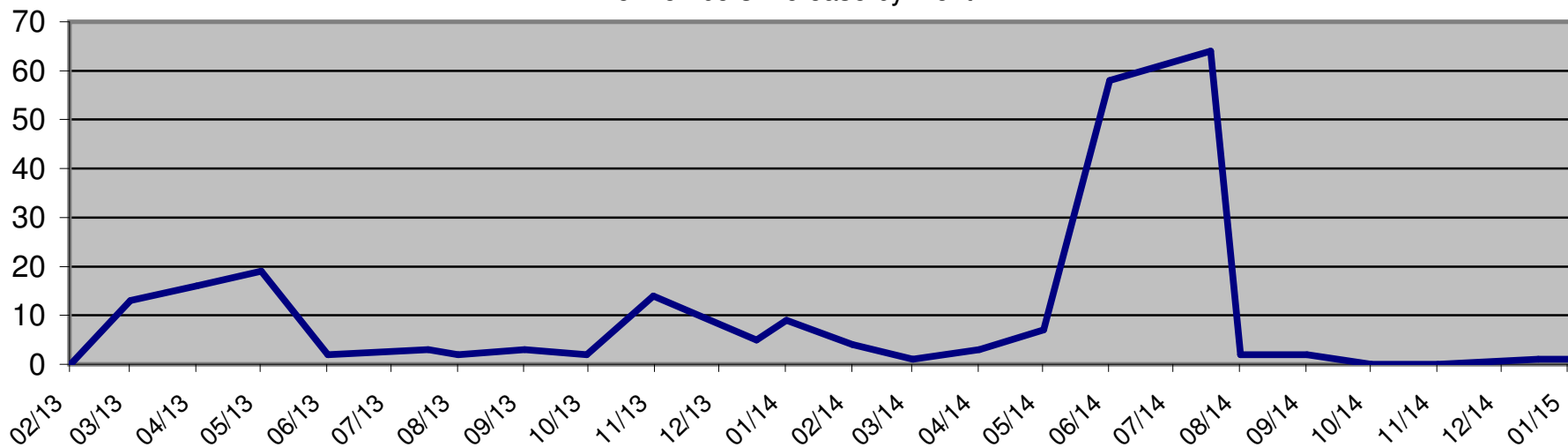
**Renew Donors - Past 12 Months**



Life Members - Total by Month



Life Members Increase by Month



Ave # of Life Members Increase Per Month Last 24 Months =5.0 / Past Five Months Increase = 0.8 \*

\* Doesn't include June/July-14 due to Life Member push prior to increase from \$1000 to \$1500 for a Life Membership