

Libertarian National Committee - Membership Report

"Donor" Totals - Jul-18

4 Year & 12 Month Comparison

	Dec-14	Dec-15	Dec-16	Dec-17	Jul-17	Aug-17	Sep-17	Oct-17	Nov-17	Dec-17	Jan-18	Feb-18	Mar-18	Apr-18	May-18	Jun-18	Jul-18
Active w-MEM	12053	11184	18592	14445	15110	14321	14411	14319	14422	14445	14506	14622	14821	14895	14705	14498	14931
Active w/out MEM	747	509	1814	553	1185	710	581	550	557	553	551	534	533	544	549	536	532
Total Active Donors	12800	11693	20406	14998	16295	15031	14992	14869	14979	14998	15057	15156	15354	15439	15254	15034	15463
Percent Change					-6.83%	-7.76%	-0.26%	-0.82%	0.74%	0.13%	0.39%	0.66%	1.31%	0.55%	-1.20%	-1.44%	2.85%
Lapsed/Drop MEM	1733	909	1016	1072	1626	1659	886	1122	837	1072	948	759	965	829	945	1154	784
Lapse w/out MEM	203	30	27	23	254	499	166	64	24	23	20	25	37	16	41	34	19
Lapsed/Drop Total	1936	939	1043	1095	1880	2158	1052	1186	861	1095	968	784	1002	845	986	1188	803
Percent Change					-11.07%	14.79%	-51.25%	12.74%	-27.40%	27.18%	-11.60%	-19.01%	27.81%	-15.67%	16.69%	20.49%	-32.41%
New Donors w-MEM	110	103	321	444	354	289	297	313	322	444	331	245	329	258	233	203	547
New w/out MEM	6	6	11	15	7	10	14	13	18	15	12	7	22	15	35	13	14
New Total	116	109	332	459	361	299	311	326	340	459	343	252	351	273	268	216	561
Percent Change					-19.60%	-17.17%	4.01%	4.82%	4.29%	35.00%	-25.27%	-26.53%	39.29%	-22.22%	-1.83%	-19.40%	159.72%
Renewed w-MEM	729	792	723	651	317	581	679	717	618	651	678	630	835	645	522	744	670
Renewed w/out MEM	14	20	8	4	8	14	23	20	13	4	6	1	14	12	11	8	1
Total Renewals	743	812	731	655	325	595	702	737	631	655	684	631	849	657	533	752	671
Percent Change					-61.63%	83.08%	17.98%	4.99%	-14.38%	3.80%	4.43%	-7.75%	34.55%	-22.61%	-18.87%	41.09%	-10.77%
Total "MEM" *	133400	135197	145814	138815	137174	137451	137779	138083	138363	138815	134464	134697	135008	135249	135435	135656	136255
Percent Change					0.26%	0.20%	0.24%	0.22%	0.20%	0.53%	-3.13%	0.17%	0.23%	0.18%	0.14%	0.16%	0.44%
Total "LIFETIME" *	2446	2458	2571	2618	2603	2605	2610	2614	2614	2618	2567	2569	2574	2580	2585	2594	2636
Total "BSM"	12526	11045	19003	14668	15706	14700	14504	14426	14423	14668	14646	14702	14798	14891	14819	14634	14955

* Note: 01/18 Drop in Total Mem & TL Lifetime is result of PNCOA & Death Record append of 160k national records resulting in about 6k newly identified deceased effecting 80+ "active" record.

Last Year vs. This Year

	Jul-17	Jul-18	Change	12 Mo Ave	Active Donors w-MEM =	14931
Active w-MEM	15110	14931	-1.18%	14575	Lapsed & Zero Dues MEM =	121324
Active w/out MEM	1185	532	-55.11%	561	Total "MEM" w-Signed Certificate =	136255
Total Active Donors	16295	15463	-5.11%	15136	Member Signed Certificate =	"MEM"
Lapsed/Dropped	1880	803	-57.29%	1077	Total "BSM" =	14955
New Donors	361	561	55.40%	333	Bylaws Defined Sustaining Member =	"BSM"
Renewals	325	671	106.46%	675		

Jul-18 MEMBERSHIP BY STATE --- ACTIVE AND NON ACTIVE

SUSTAINING MEMBERSHIP STATE RANKINGS - "BSM"

STATE	TOTAL "MEM"	ACTIVE "MEM"	ACTIVE "SUB"	TOTAL "ACTIVE"	TOTAL "BSM"	STATE	TOTAL "MEM"	ACTIVE "MEM"	ACTIVE "SUB"	TOTAL "ACTIVE"	TOTAL "BSM"
AK	678	83	1	84	84	MT	566	76	3	79	78
AL	1797	208	8	216	213	NC	3435	399	16	415	396
AR	899	100	2	102	97	ND	245	39	2	41	36
AZ	3196	340	14	354	336	NE	662	96	1	97	93
CA	18685	1619	68	1687	1631	NH	1424	182	5	187	182
CO	3828	475	11	486	478	NJ	3016	321	10	331	319
CT	1473	178	9	187	178	NM	1175	138	4	142	138
DC	385	45	1	46	44	NV	1881	183	9	192	186
DE	400	52	1	53	50	NY	4999	686	33	719	680
FL	8217	808	33	841	814	OH	4992	611	17	628	605
GA	5805	453	11	464	458	OK	1105	183	1	184	183
HI	535	58	4	62	60	OR	2206	162	15	177	164
IA	1075	143	4	147	142	PA	5875	612	15	627	617
ID	792	80	2	82	80	RI	308	35	2	37	35
IL	4421	515	21	536	509	SC	1942	224	3	227	226
IN	3357	406	14	420	415	SD	279	47	3	50	46
KS	1185	132	3	135	133	TN	2636	348	6	354	354
KY	1215	138	6	144	140	TX	9469	1093	38	1131	1105
LA	1217	240	6	246	241	UT	1212	107	4	111	107
MA	2788	256	10	266	252	VA	4815	615	15	630	615
MD	2375	283	14	297	286	VT	398	37	3	40	35
ME	805	85	5	90	86	WA	4551	496	22	518	494
MI	5147	519	13	532	518	WI	2083	282	13	295	277
MN	2055	207	3	210	207	WV	603	68	0	68	67
MO	2319	267	11	278	265	WY	325	44	1	45	45
MS	720	96	5	101	100	XX	684	61	11	72	55

State	Total BSM	Rank	State	Total BSM	Rank
CA	1631	1	OK	183	27
TX	1105	2	NH	182	28
FL	814	3	CT	178	29
NY	680	4	OR	164	30
PA	617	5	IA	142	31
VA	615	6	KY	140	32
OH	605	7	NM	138	33
MI	518	8	KS	133	34
IL	509	9	UT	107	35
WA	494	10	MS	100	36
CO	478	11	AR	97	37
GA	458	12	NE	93	38
IN	415	13	ME	86	39
NC	396	14	AK	84	40
TN	354	15	ID	80	41
AZ	336	16	MT	78	42
NJ	319	17	WV	67	43
MD	286	18	HI	60	44
WI	277	19	DE	50	45
MO	265	20	SD	46	46
MA	252	21	WY	45	47
LA	241	22	DC	44	48
SC	226	23	ND	36	49
AL	213	24	RI	35	50
MN	207	25	VT	35	51
NV	186	26	XX	55	52
			Total:	14955	

TOTAL "MEM"	ACTIVE "MEM"	ACTIVE "SUB"	TOTAL "ACTIVE"	TOTAL "BSM"
TOTALS	136255	14931	532	15463

DEFINITIONS: MEM = Member Signed Certificate

Total MEM = Total # Constituents Per State w-Member Signed Certificate

ACTIVE MEM = Current Dues Paying or Lifetime Donor w-Signed Certificate

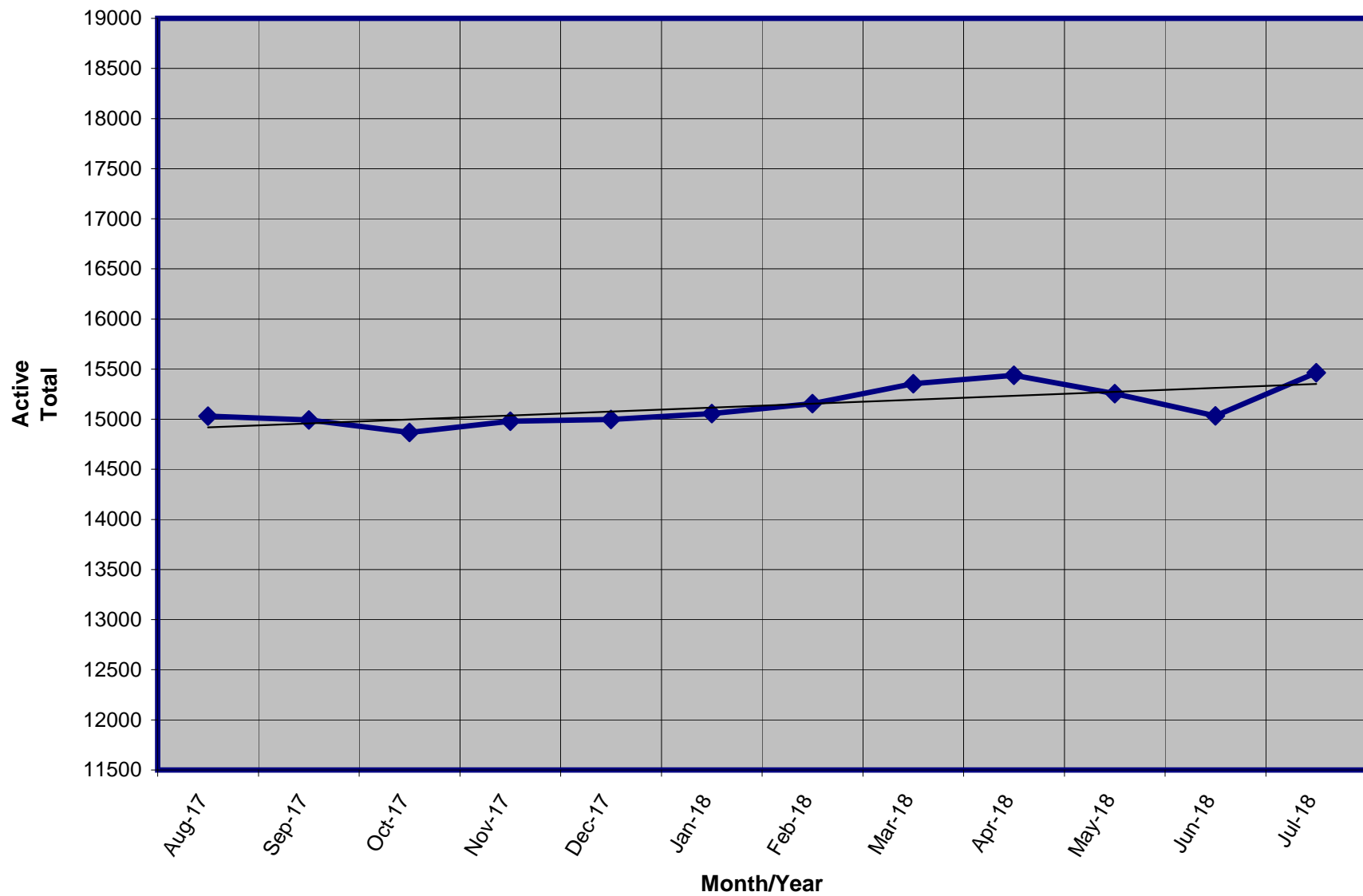
ACTIVE SUB (ACTIVE NON MEM) = Current Dues Paying or Lifetime Donors Who Have NOT Signed the Certificate (Formerly Called "Subscriber")

TOTAL ACTIVE = Current Dues Paying or Lifetime Donor

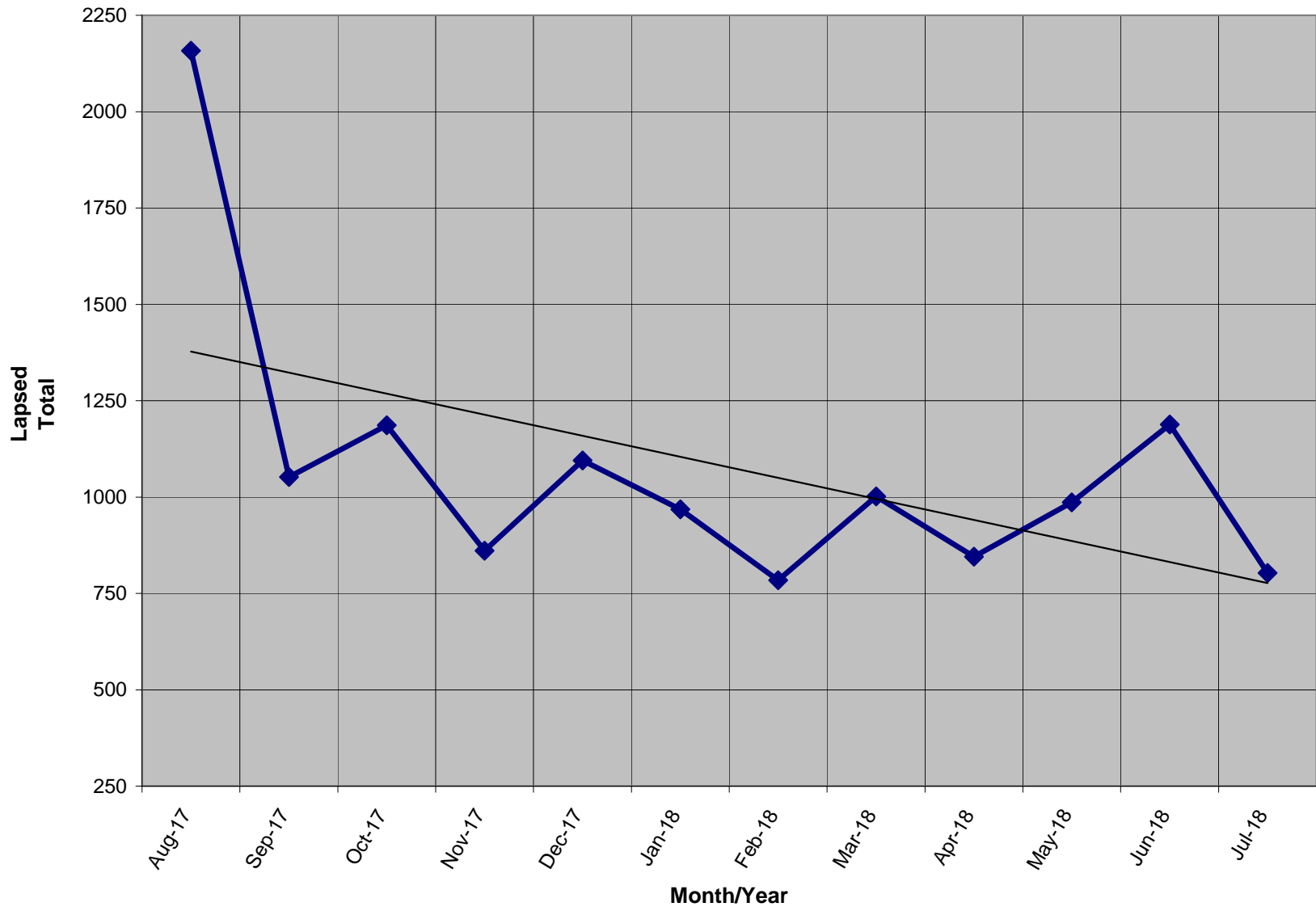
BSM = By Law Definition of "Sustaining Member" and number used for delegate count

(Art 5-3: "Sustaining member" is any Party member who has given at least \$25 to the Party in the prior twelve months, or who is a life member.)

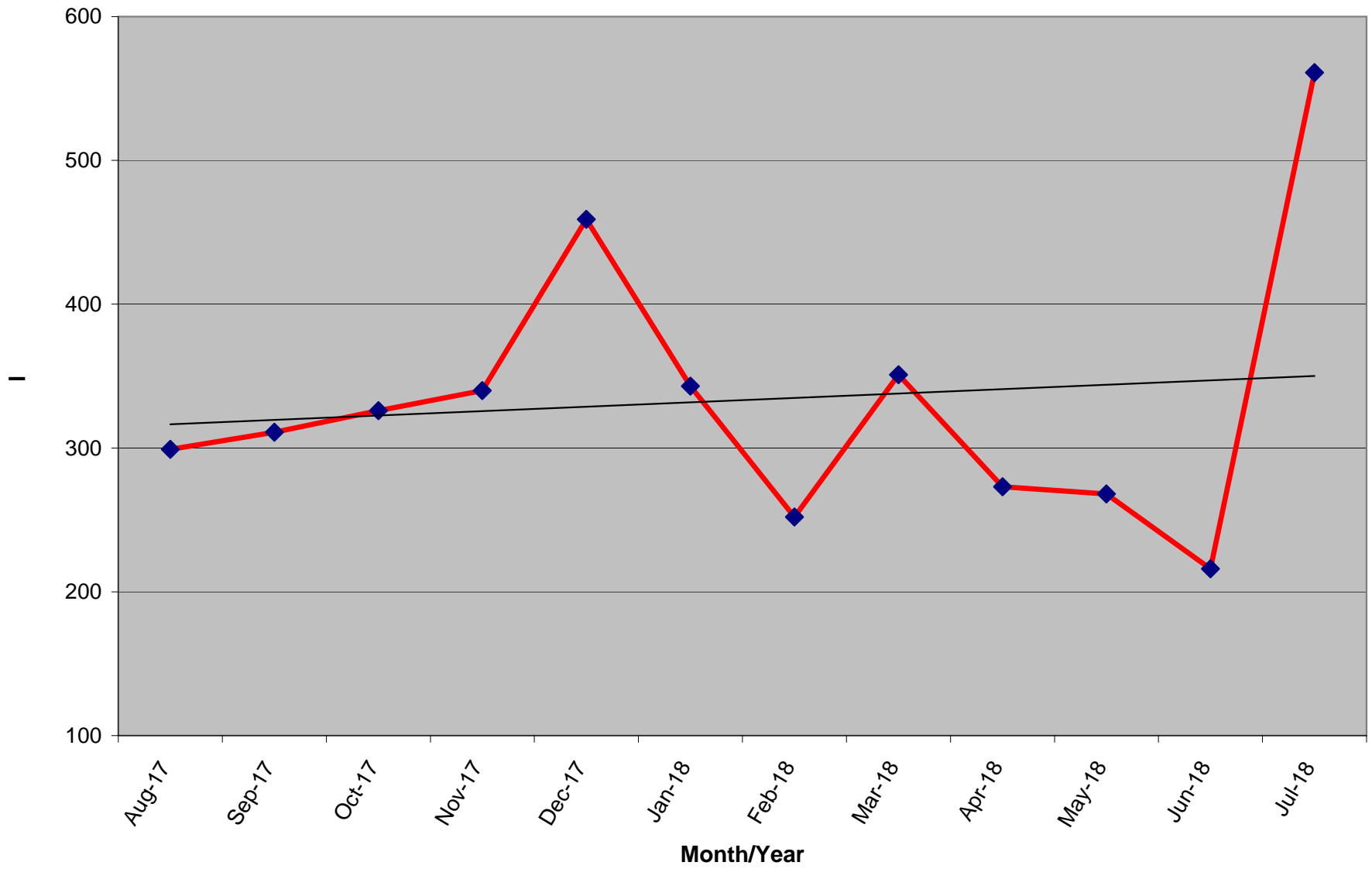
Active Donors - Past 12 Months



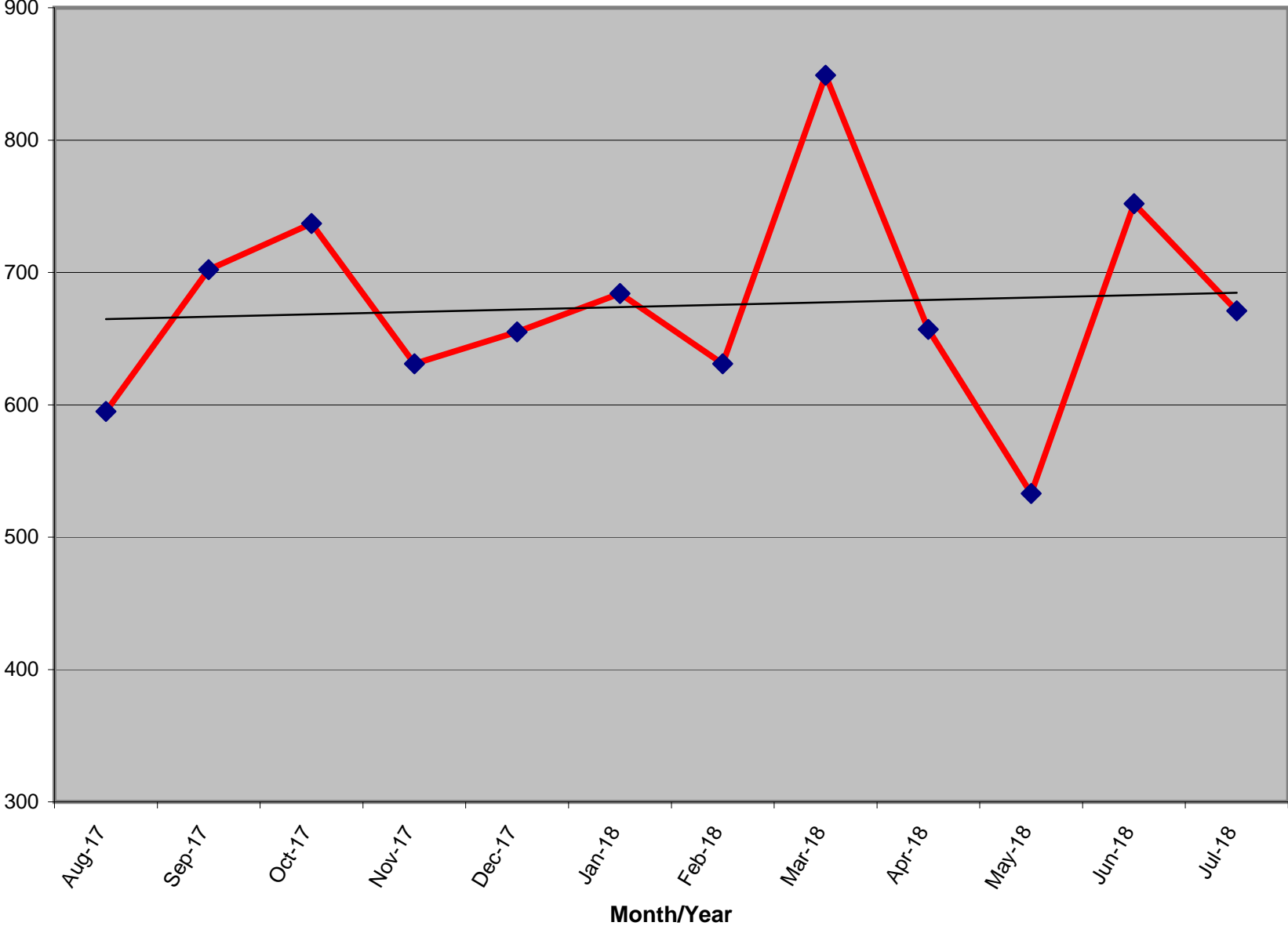
Lapsed - Dropped - Donors - Past 12 Months



New Donors Past 12 Months



Renew Donors - Past 12 Months



% OF ACTIVE MEMBERS VS. REGISTERED LIBERTARIAN VOTERS BY STATE

STATE	TI Reg Voters	Reg Lib	% Reg L to TI Reg	Total Active By State	Active to Registered
AK	520,646	7,593	1.46%	83	1.09%
AL	3,303,122	0	n/a	208	n/a
AR	1,744,141	348	0.02%	100	28.74%
AZ	3,662,382	31,554	0.86%	340	1.08%
CA *	18,854,829	139,620	0.74%	1,619	1.16%
CO	3,219,953	36,911	1.15%	475	1.29%
CT	2,116,421	2,900	0.14%	178	6.14%
DC	473,526	1,025	0.22%	45	4.39%
DE	689,083	1,640	0.24%	52	3.17%
FL	13,694,743	33,305	0.24%	808	2.43%
GA	6,443,457	0	n/a	453	n/a
HI	716,458	0	n/a	58	n/a
IA	1,955,058	9,331	0.48%	143	1.53%
ID	801,151	6,482	0.81%	80	1.23%
IL	8,780,685	0	n/a	515	n/a
IN	4,355,147	0	n/a	406	n/a
KS	1,611,223	13,746	0.85%	132	0.96%
KY	3,346,095	8,250	0.25%	138	1.67%
LA	2,972,024	14,569	0.49%	240	1.65%
MA	4,486,849	8,587	0.19%	256	2.98%
MD	3,903,599	20,894	0.54%	283	1.35%
ME	1,036,264	5,573	0.54%	85	1.53%
MI	7,347,955	0	n/a	519	n/a
MN	3,268,360	0	n/a	207	n/a
MO	4,123,266	0	n/a	267	n/a
MS	2,044,713	0	n/a	96	n/a

*Voter registration totals provided by Richard Winger as of 03/18 - * CA as of 05/18*

STATE	TI Reg Voters	Reg Lib	% Reg L to TI Reg	Total Active By State	Active to Registered
MT	695,971	0	n/a	76	n/a
NC	6,849,567	34,563	0.50%	399	1.15%
ND	429,978	0	n/a	39	n/a
NE	1,195,069	13,012	1.09%	96	0.74%
NH	961,819	162	0.02%	182	112.35%
NJ	5,778,406	8,874	0.15%	321	3.62%
NM	1,220,056	7,792	0.64%	138	1.77%
NV	1,468,671	14,322	0.98%	183	1.28%
NY	11,546,694	6,502	0.06%	686	10.55%
OH	7,914,320	0	n/a	611	n/a
OK	2,013,849	4,796	0.24%	183	3.82%
OR	2,652,935	18,962	0.71%	162	0.85%
PA	8,492,584	45,142	0.53%	612	1.36%
RI	772,360	0	n/a	35	n/a
SC	3,268,076	0	n/a	224	n/a
SD	526,773	1,673	0.32%	47	2.81%
TN	4,112,566	0	n/a	348	n/a
TX	14,748,880	0	n/a	1,093	n/a
UT	1,307,119	10,927	0.84%	107	0.98%
VA	5,473,173	0	n/a	615	n/a
VT	459,719	0	n/a	37	n/a
WA	4,646,246	0	n/a	496	n/a
WI	5,842,402	0	n/a	282	n/a
WV	1,228,123	5,616	0.46%	68	1.21%
WY	262,620	2,410	0.92%	44	1.83%
XX	356,791	0	n/a	61	n/a
Totals	199,695,917	517,081	0.54%	14,931	2.89%

% OF ACTIVE MEMBERS VS. 2010 CENSUS POPULATION BY STATE

STATE	2010 Census	TI Active By State	Active to Population
AK	710,231	83	0.0117%
AL	4,779,736	208	0.0044%
AR	2,915,918	100	0.0034%
AZ	6,392,017	340	0.0053%
CA	37,253,956	1,619	0.0043%
CO	5,029,196	475	0.0094%
CT	3,574,097	178	0.0050%
DC	601,723	45	0.0075%
DE	897,934	52	0.0058%
FL	18,801,310	808	0.0043%
GA	9,687,653	453	0.0047%
HI	1,360,301	58	0.0043%
IA	3,046,355	143	0.0047%
ID	1,567,582	80	0.0051%
IL	12,830,632	515	0.0040%
IN	6,483,802	406	0.0063%
KS	2,853,118	132	0.0046%
KY	4,339,367	138	0.0032%
LA	4,533,372	240	0.0053%
MA	6,547,629	256	0.0039%
MD	5,773,552	283	0.0049%
ME	1,328,361	85	0.0064%
MI	9,883,640	519	0.0053%
MN	5,303,925	207	0.0039%
MO	5,988,927	267	0.0045%
MS	2,967,297	96	0.0032%

ACTIVE TO POPULATION BY RANK

STATE	2010 Census	TI Active By State	Active to Population
MT	989,415	76	0.0077%
NC	9,535,483	399	0.0042%
ND	672,591	39	0.0058%
NE	1,826,341	96	0.0053%
NH	1,316,470	182	0.0138%
NJ	8,791,894	321	0.0037%
NM	2,059,179	138	0.0067%
NV	2,700,551	183	0.0068%
NY	19,378,102	686	0.0035%
OH	11,536,504	611	0.0053%
OK	3,751,351	183	0.0049%
OR	3,831,074	162	0.0042%
PA	12,702,379	612	0.0048%
RI	1,052,567	35	0.0033%
SC	4,625,364	224	0.0048%
SD	814,180	47	0.0058%
TN	6,346,105	348	0.0055%
TX	25,145,561	1,093	0.0043%
UT	2,763,885	107	0.0039%
VA	8,001,024	615	0.0077%
VT	625,741	37	0.0059%
WA	6,724,540	496	0.0074%
WI	5,686,986	282	0.0050%
WV	1,852,994	68	0.0037%
WY	563,626	44	0.0078%
Totals	308,745,538	14,870	0.0048%

STATE	Rank	TI Active By State	Active to Population
NH	1	182	0.0138%
AK	2	83	0.0117%
CO	3	475	0.0094%
WY	4	44	0.0078%
VA	5	615	0.0077%
MT	6	76	0.0077%
DC	7	45	0.0075%
WA	8	496	0.0074%
NV	9	183	0.0068%
NM	10	138	0.0067%
ME	11	85	0.0064%
IN	12	406	0.0063%
VT	13	37	0.0059%
ND	14	39	0.0058%
DE	15	52	0.0058%
SD	16	47	0.0058%
TN	17	348	0.0055%
AZ	18	340	0.0053%
OH	19	611	0.0053%
LA	20	240	0.0053%
NE	21	96	0.0053%
MI	22	519	0.0053%
ID	23	80	0.0051%
CT	24	178	0.0050%
WI	25	282	0.0050%
MD	26	283	0.0049%

STATE	Rank	TI Active By State	Active to Population
OK	27	183	0.0049%
SC	28	224	0.0048%
PA	29	612	0.0048%
IA	30	143	0.0047%
GA	31	453	0.0047%
KS	32	132	0.0046%
MO	33	267	0.0045%
AL	34	208	0.0044%
TX	35	1,093	0.0043%
CA	36	1,619	0.0043%
FL	37	808	0.0043%
HI	38	58	0.0043%
OR	39	162	0.0042%
NC	40	399	0.0042%
IL	41	515	0.0040%
MA	42	256	0.0039%
MN	43	207	0.0039%
UT	44	107	0.0039%
WV	45	68	0.0037%
NJ	46	321	0.0037%
NY	47	686	0.0035%
AR	48	100	0.0034%
RI	49	35	0.0033%
MS	50	96	0.0032%
KY	51	138	0.0032%
Totals		14,870	0.0048%

* 2010 US Census Figures - does not include PR or other territories or out of US ("XX" states)