

Libertarian National Committee - Membership Report

"Donor" Totals - Oct-19

4 Year & 12 Month Comparison

	Dec-15	Dec-16	Dec-17	Dec-18	Oct-18	Nov-18	Dec-18	Jan-19	Feb-19	Mar-19	Apr-19	May-19	Jun-19	Jul-19	Aug-19	Sep-19	Oct-19
Active w-MEM	11184	18592	14445	14494	15100	14955	14494	14278	14294	14271	14187	14224	14158	13895	13991	14232	14632
Active w/out MEM	509	1814	553	514	531	525	514	496	503	502	501	486	480	479	441	436	423
Total Active Donors	11693	20406	14998	15008	15631	15480	15008	14774	14797	14773	14688	14710	14638	14374	14432	14668	15055
Percent Change					-0.20%	-0.97%	-3.05%	-1.56%	0.16%	-0.16%	-0.58%	0.15%	-0.49%	-1.80%	0.40%	1.64%	2.64%
Lapsed/Drop MEM	909	1016	1072	1184	969	962	1184	1077	839	1050	871	926	856	1132	1080	732	1008
Lapse w/out MEM	30	27	23	27	29	30	27	21	15	23	24	51	17	20	50	24	26
Lapsed/Drop Total	939	1043	1095	1211	998	992	1211	1098	854	1073	895	977	873	1152	1130	756	1034
Percent Change					7.54%	-0.60%	22.08%	-9.33%	-22.22%	25.64%	-16.59%	9.16%	-10.64%	31.96%	-1.91%	-33.10%	36.77%
New Donors w-MEM	103	321	444	159	265	253	159	199	227	230	180	218	180	219	353	403	533
New w/out MEM	6	11	15	14	13	8	14	3	2	15	15	14	5	17	10	9	6
New Total	109	332	459	173	278	261	173	202	229	245	195	232	185	236	363	412	539
Percent Change					19.83%	-6.12%	-33.72%	16.76%	13.37%	6.99%	-20.41%	18.97%	-20.26%	27.57%	53.81%	13.50%	30.83%
Renewed w-MEM	792	723	651	564	670	564	564	662	628	797	607	745	610	650	823	570	875
Renewed w/out MEM	20	8	4	2	19	16	2	0	20	7	8	22	6	2	2	10	7
Total Renewals	812	731	655	566	689	580	566	662	648	804	615	767	616	652	825	580	882
Percent Change					13.88%	-15.82%	-2.41%	16.96%	-2.11%	24.07%	-23.51%	24.72%	-19.69%	5.84%	26.53%	-29.70%	52.07%
Total "MEM" *	135197	145814	138815	137321	136952	137205	137321	137535	137726	137974	138141	138361	138536	138757	139127	139520	140067
Percent Change					0.17%	0.18%	0.08%	0.16%	0.14%	0.18%	0.12%	0.16%	0.13%	0.16%	0.27%	0.28%	0.39%
Total "LIFETIME" *	2458	2571	2618	2652	2643	2646	2652	2652	2658	2668	2674	2679	2686	2687	2689	2698	2709
Total "BSM"	11045	19003	14668	14639	15150	15016	14639	14385	14372	14327	14324	14288	14208	13934	13963	14139	14501

Last Year vs. This Year

	Oct-18	Oct-19	Change	12 Mo Ave		
Active w-MEM	15100	14632	-3.10%	14301	<u>Active Donors w-MEM =</u>	14632
Active w/out MEM	531	423	-20.34%	482	<u>Lapsed & Zero Dues MEM =</u>	125435
Total Active Donors	15631	15055	-3.68%	14783	<u>Total "MEM" w-Signed Certificate =</u>	140067
Lapsed/Dropped	998	1034	3.61%	1004	<u>Member Signed Certificate =</u>	"MEM"
New Donors	278	539	93.88%	273	<u>Total "BSM" =</u>	14501
Renewals	689	882	28.01%	683	<u>Bylaws Defined Sustaining Member =</u>	"BSM"

Oct-19 MEMBERSHIP BY STATE --- ACTIVE AND NON ACTIVE

SUSTAINING MEMBERSHIP STATE RANKINGS - "BSM"

STATE	TOTAL "MEM"	ACTIVE "MEM"	ACTIVE "SUB"	TOTAL "ACTIVE"	TOTAL "BSM"	STATE	TOTAL "MEM"	ACTIVE "MEM"	ACTIVE "SUB"	TOTAL "ACTIVE"	TOTAL "BSM"
AK	679	73	3	76	69	MT	581	64	2	66	63
AL	1882	201	0	201	197	NC	3610	401	5	406	401
AR	944	100	2	102	98	ND	253	33	5	38	33
AZ	3323	345	10	355	338	NE	676	89	1	90	91
CA	18724	1541	54	1595	1528	NH	1466	171	3	174	172
CO	3978	503	11	514	501	NJ	3047	300	9	309	297
CT	1510	177	6	183	176	NM	1210	148	2	150	147
DC	366	39	2	41	39	NV	1936	191	13	204	188
DE	422	49	4	53	47	NY	5187	738	23	761	728
FL	8471	812	32	844	807	OH	5219	665	10	675	668
GA	5916	411	12	423	414	OK	1150	164	0	164	160
HI	546	54	4	58	51	OR	2252	176	12	188	174
IA	1099	126	3	129	122	PA	6029	615	14	629	608
ID	824	65	1	66	63	RI	316	32	2	34	32
IL	4485	471	13	484	466	SC	2059	249	3	252	247
IN	3473	425	6	431	419	SD	288	49	1	50	47
KS	1206	118	0	118	118	TN	2796	359	3	362	356
KY	1261	132	5	137	130	TX	9883	1099	34	1133	1097
LA	1251	192	3	195	193	UT	1275	121	5	126	119
MA	2827	248	8	256	244	VA	4887	546	13	559	541
MD	2438	279	14	293	274	VT	406	39	3	42	38
ME	831	83	0	83	83	WA	4685	481	16	497	476
MI	5292	466	13	479	461	WI	2155	247	10	257	245
MN	2121	225	5	230	224	WV	630	74	0	74	71
MO	2402	236	8	244	236	WY	336	42	0	42	42
MS	755	93	4	97	94	XX	709	75	11	86	68

State	Total BSM	Rank	State	Total BSM	Rank
CA	1528	1	CT	176	27
TX	1097	2	OR	174	28
FL	807	3	NH	172	29
NY	728	4	OK	160	30
OH	668	5	NM	147	31
PA	608	6	KY	130	32
VA	541	7	IA	122	33
CO	501	8	UT	119	34
WA	476	9	KS	118	35
IL	466	10	AR	98	36
MI	461	11	MS	94	37
IN	419	12	NE	91	38
GA	414	13	ME	83	39
NC	401	14	WV	71	40
TN	356	15	AK	69	41
AZ	338	16	ID	63	42
NJ	297	17	MT	63	43
MD	274	18	HI	51	44
SC	247	19	DE	47	45
WI	245	20	SD	47	46
MA	244	21	WY	42	47
MO	236	22	DC	39	48
MN	224	23	VT	38	49
AL	197	24	ND	33	50
LA	193	25	RI	32	51
NV	188	26	XX	68	52
			Total:	14501	

TOTAL "MEM"	ACTIVE "MEM"	ACTIVE "SUB"	TOTAL "ACTIVE"	TOTAL "BSM"
TOTALS	140067	14632	423	15055

DEFINITIONS: MEM = Member Signed Certificate

Total MEM = Total # Constituents Per State w-Member Signed Certificate

ACTIVE MEM = Current Dues Paying or Lifetime Donor w-Signed Certificate

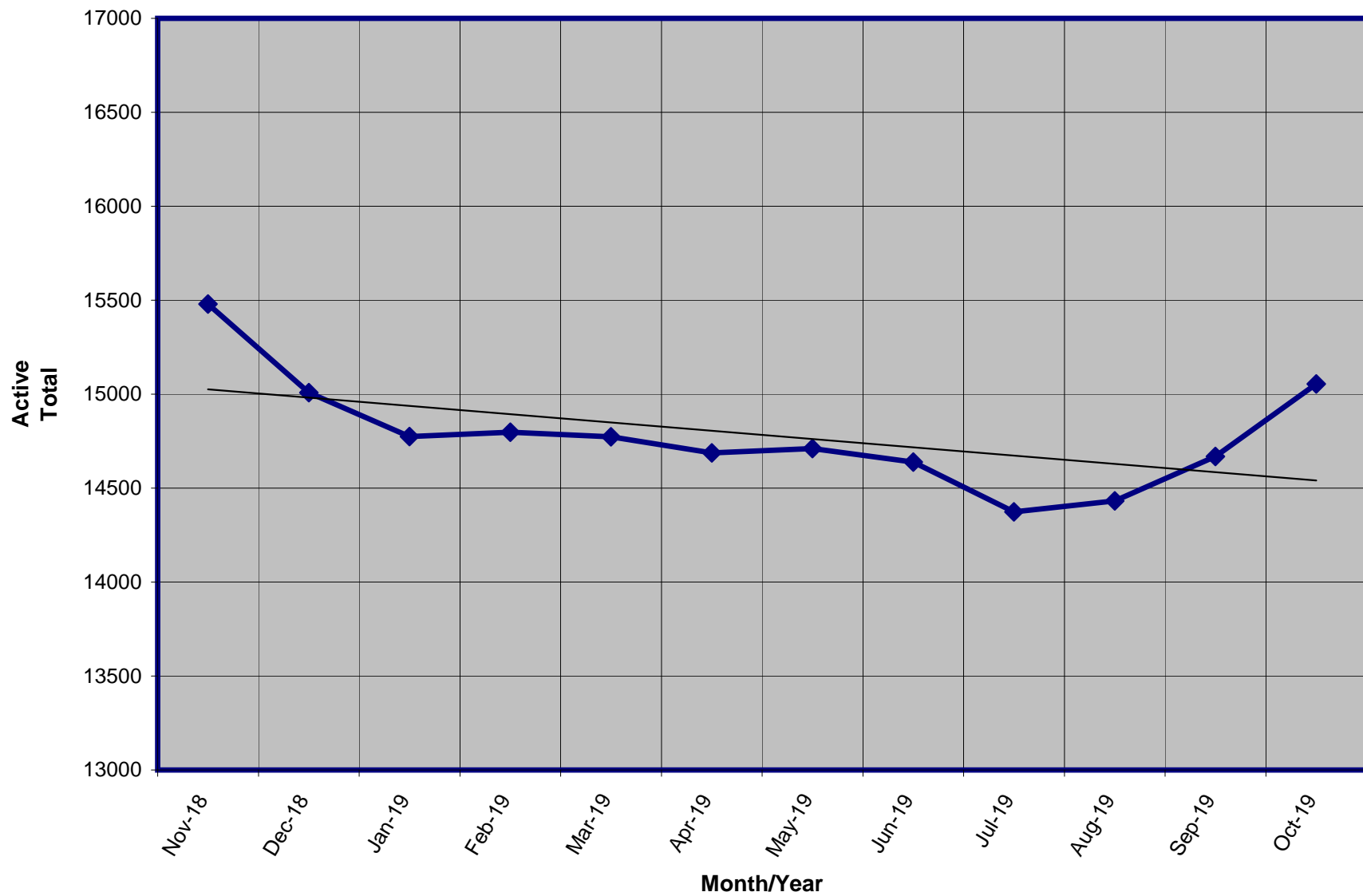
ACTIVE SUB (ACTIVE NON MEM) = Current Dues Paying or Lifetime Donors Who Have NOT Signed the Certificate (Formerly Called "Subscriber")

TOTAL ACTIVE = Current Dues Paying or Lifetime Donor

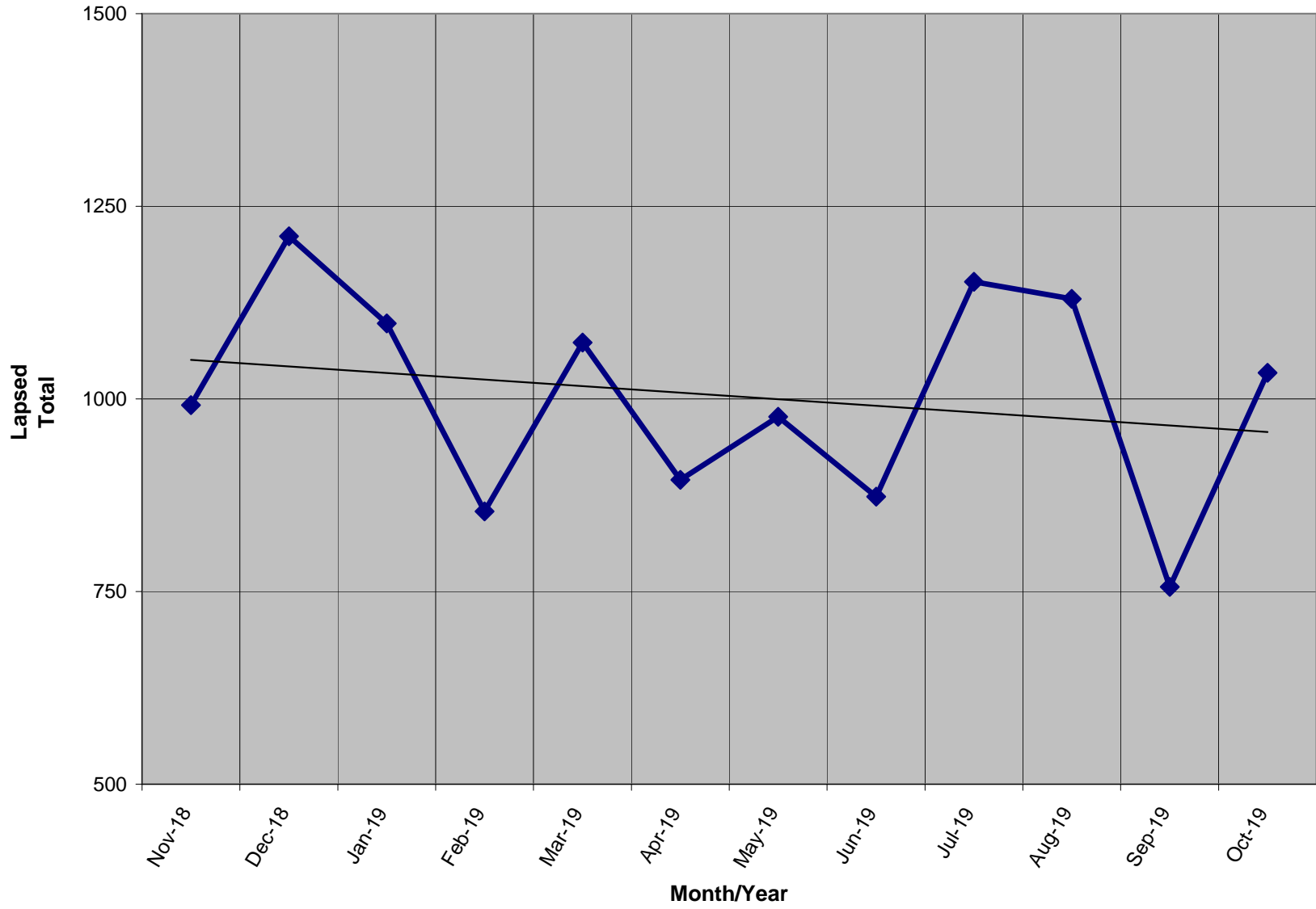
BSM = By Law Definition of "Sustaining Member" and number used for delegate count

(Art 5-3: "Sustaining member" is any Party member who has given at least \$25 to the Party in the prior twelve months, or who is a life member.)

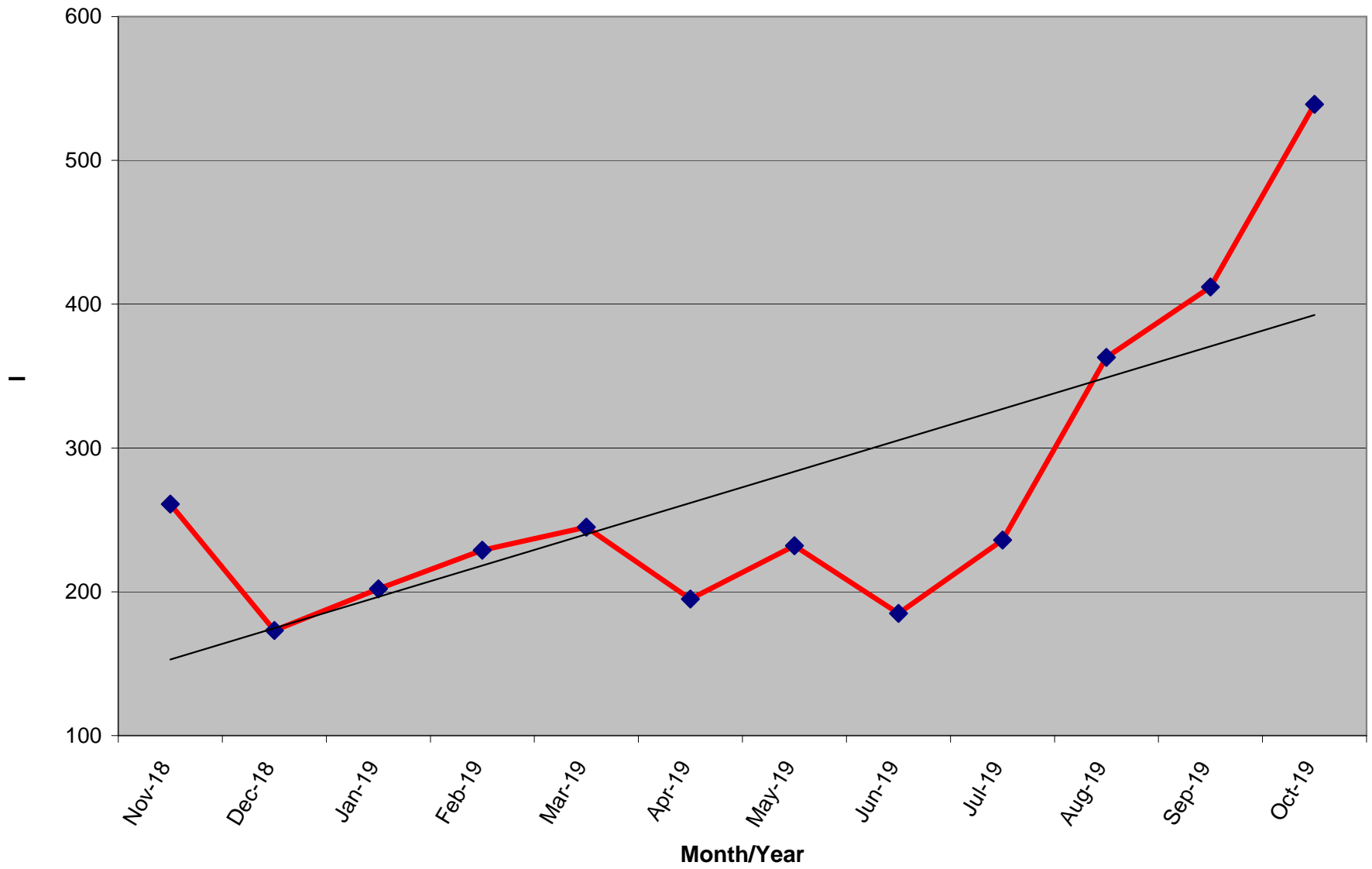
Active Donors - Past 12 Months



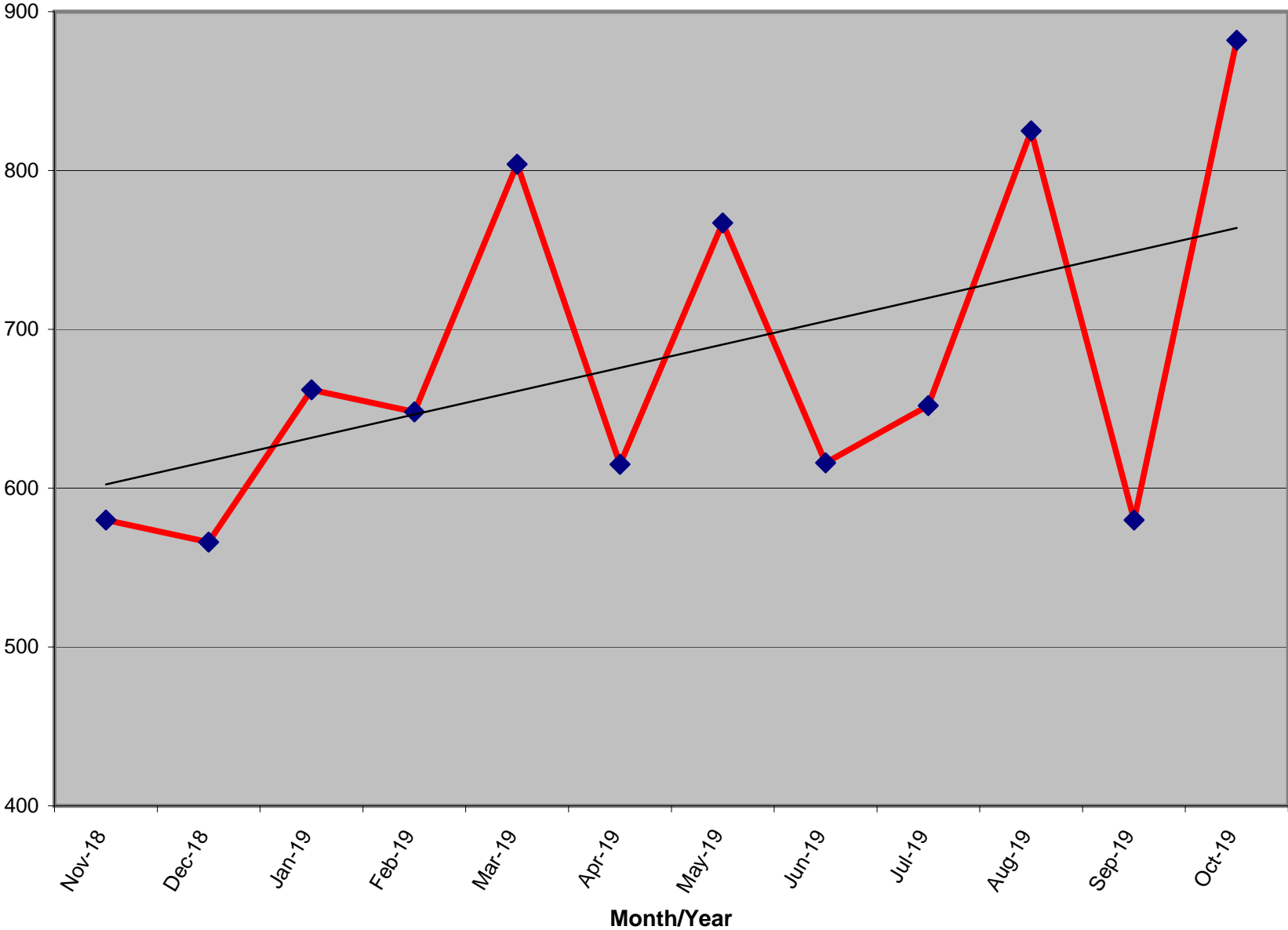
Lapsed - Dropped - Donors - Past 12 Months



New Donors Past 12 Months



Renew Donors - Past 12 Months



% OF ACTIVE MEMBERS VS. REGISTERED LIBERTARIAN VOTERS BY STATE

STATE	TI Reg Voters	Reg Lib	% Reg L to TI Reg	Total Active By State	Active to Registered
AK	520,646	7,593	1.46%	73	0.96%
AL	3,303,122	0	n/a	201	n/a
AR	1,744,141	348	0.02%	100	28.74%
AZ	3,774,016	32,056	0.85%	345	1.08%
CA	25,259,865	153,348	0.61%	1,541	1.00%
CO	3,219,953	36,911	1.15%	503	1.36%
CT	2,156,316	2,959	0.14%	177	5.98%
DC	473,526	1,025	0.22%	39	3.80%
DE	715,019	1,640	0.23%	49	2.99%
FL	13,694,743	31,682	0.23%	812	2.56%
GA	6,443,457	0	n/a	411	n/a
HI	716,458	0	n/a	54	n/a
IA	1,955,058	9,331	0.48%	126	1.35%
ID	801,151	6,482	0.81%	65	1.00%
IL	8,780,685	0	n/a	471	n/a
IN	4,355,147	0	n/a	425	n/a
KS	1,611,223	13,746	0.85%	118	0.86%
KY	3,346,095	8,250	0.25%	132	1.60%
LA	2,972,024	14,569	0.49%	192	1.32%
MA	4,574,967	15,787	0.35%	248	1.57%
MD	3,903,599	20,894	0.54%	279	1.34%
ME	1,028,602	5,554	0.54%	83	1.49%
MI	7,347,955	0	n/a	466	n/a
MN	3,268,360	0	n/a	225	n/a
MO	4,123,266	0	n/a	236	n/a
MS	2,044,713	0	n/a	93	n/a

Registration totals provided by Richard Winger as of 06/19

STATE	TI Reg Voters	Reg Lib	% Reg L to TI Reg	Total Active By State	Active to Registered
MT	695,971	0	n/a	64	n/a
NC	6,571,602	36,010	0.55%	401	1.11%
ND	429,978	0	n/a	33	n/a
NE	1,203,872	15,029	1.25%	89	0.59%
NH	961,819	162	0.02%	171	105.56%
NJ	5,778,406	8,874	0.15%	300	3.38%
NM	1,220,056	7,792	0.64%	148	1.90%
NV	1,543,822	15,486	1.00%	191	1.23%
NY	12,695,762	9,757	0.08%	738	7.56%
OH	7,914,320	0	n/a	665	n/a
OK	2,112,991	8,497	0.40%	164	1.93%
OR	2,652,935	18,962	0.71%	176	0.93%
PA	8,609,880	44,848	0.52%	615	1.37%
RI	772,360	0	n/a	32	n/a
SC	3,268,076	0	n/a	249	n/a
SD	550,529	1,893	0.34%	49	2.59%
TN	4,112,566	0	n/a	359	n/a
TX	14,748,880	0	n/a	1,099	n/a
UT	1,446,211	15,393	1.06%	121	0.79%
VA	5,473,173	0	n/a	546	n/a
VT	459,719	0	n/a	39	n/a
WA	4,646,246	0	n/a	481	n/a
WI	5,842,402	0	n/a	247	n/a
WV	1,228,123	5,616	0.46%	74	1.32%
WY	262,620	2,410	0.92%	42	1.74%
XX	356,791	0	n/a	75	n/a
Totals	207,693,217	552,904	0.56%	14,632	2.65%

% OF ACTIVE MEMBERS VS. 2010 CENSUS POPULATION BY STATE

STATE	2010 Census	TI Active By State	Active to Population
AK	710,231	73	0.0103%
AL	4,779,736	201	0.0042%
AR	2,915,918	100	0.0034%
AZ	6,392,017	345	0.0054%
CA	37,253,956	1,541	0.0041%
CO	5,029,196	503	0.0100%
CT	3,574,097	177	0.0050%
DC	601,723	39	0.0065%
DE	897,934	49	0.0055%
FL	18,801,310	812	0.0043%
GA	9,687,653	411	0.0042%
HI	1,360,301	54	0.0040%
IA	3,046,355	126	0.0041%
ID	1,567,582	65	0.0041%
IL	12,830,632	471	0.0037%
IN	6,483,802	425	0.0066%
KS	2,853,118	118	0.0041%
KY	4,339,367	132	0.0030%
LA	4,533,372	192	0.0042%
MA	6,547,629	248	0.0038%
MD	5,773,552	279	0.0048%
ME	1,328,361	83	0.0062%
MI	9,883,640	466	0.0047%
MN	5,303,925	225	0.0042%
MO	5,988,927	236	0.0039%
MS	2,967,297	93	0.0031%

ACTIVE TO POPULATION BY RANK

STATE	2010 Census	TI Active By State	Active to Population
MT	989,415	64	0.0065%
NC	9,535,483	401	0.0042%
ND	672,591	33	0.0049%
NE	1,826,341	89	0.0049%
NH	1,316,470	171	0.0130%
NJ	8,791,894	300	0.0034%
NM	2,059,179	148	0.0072%
NV	2,700,551	191	0.0071%
NY	19,378,102	738	0.0038%
OH	11,536,504	665	0.0058%
OK	3,751,351	164	0.0044%
OR	3,831,074	176	0.0046%
PA	12,702,379	615	0.0048%
RI	1,052,567	32	0.0030%
SC	4,625,364	249	0.0054%
SD	814,180	49	0.0060%
TN	6,346,105	359	0.0057%
TX	25,145,561	1,099	0.0044%
UT	2,763,885	121	0.0044%
VA	8,001,024	546	0.0068%
VT	625,741	39	0.0062%
WA	6,724,540	481	0.0072%
WI	5,686,986	247	0.0043%
WV	1,852,994	74	0.0040%
WY	563,626	42	0.0075%
Totals	308,745,538	14,557	0.0047%

STATE	Rank	TI Active By State	Active to Population
NH	1	171	0.0130%
AK	2	73	0.0103%
CO	3	503	0.0100%
WY	4	42	0.0075%
NM	5	148	0.0072%
WA	6	481	0.0072%
NV	7	191	0.0071%
VA	8	546	0.0068%
IN	9	425	0.0066%
DC	10	39	0.0065%
MT	11	64	0.0065%
ME	12	83	0.0062%
VT	13	39	0.0062%
SD	14	49	0.0060%
OH	15	665	0.0058%
TN	16	359	0.0057%
DE	17	49	0.0055%
AZ	18	345	0.0054%
SC	19	249	0.0054%
CT	20	177	0.0050%
ND	21	33	0.0049%
NE	22	89	0.0049%
PA	23	615	0.0048%
MD	24	279	0.0048%
MI	25	466	0.0047%
OR	26	176	0.0046%

STATE	Rank	TI Active By State	Active to Population
UT	27	121	0.0044%
OK	28	164	0.0044%
TX	29	1,099	0.0044%
WI	30	247	0.0043%
FL	31	812	0.0043%
GA	32	411	0.0042%
MN	33	225	0.0042%
LA	34	192	0.0042%
NC	35	401	0.0042%
AL	36	201	0.0042%
ID	37	65	0.0041%
CA	38	1,541	0.0041%
IA	39	126	0.0041%
KS	40	118	0.0041%
WV	41	74	0.0040%
HI	42	54	0.0040%
MO	43	236	0.0039%
NY	44	738	0.0038%
MA	45	248	0.0038%
IL	46	471	0.0037%
AR	47	100	0.0034%
NJ	48	300	0.0034%
MS	49	93	0.0031%
KY	50	132	0.0030%
RI	51	32	0.0030%
Totals		14,557	0.0047%

** 2010 US Census Figures - does not include PR or other territories or out of US ("XX" states)*