

# Libertarian National Committee - Membership Report

## "Donor" Totals - Feb-13

### 4 Year & 12 Month Comparison

	Dec-09	Dec-10	Dec-11	Dec-12	Feb-12	Mar-12	Apr-12	May-12	Jun-12	Jul-12	Aug-12	Sep-12	Oct-12	Nov-12	Dec-12	Jan-13	Feb-13
Active w-MEM	14076	14077	13468	13749	13538	13406	13179	12923	12870	12960	13361	13788	14070	14182	13749	13883	13957
Active w/out MEM	587	991	859	1194	852	880	921	911	884	896	968	1135	1213	1175	1194	1195	1181
<b>Total</b>	<b>14663</b>	<b>15068</b>	<b>14327</b>	<b>14943</b>	<b>14390</b>	<b>14286</b>	<b>14100</b>	<b>13834</b>	<b>13754</b>	<b>13856</b>	<b>14329</b>	<b>14923</b>	<b>15283</b>	<b>15357</b>	<b>14943</b>	<b>15078</b>	<b>15138</b>
<b>Percent Change</b>	<b>-10.31%</b>	<b>2.76%</b>	<b>-4.92%</b>	<b>4.30%</b>	<b>0.33%</b>	<b>-0.72%</b>	<b>-1.30%</b>	<b>-1.89%</b>	<b>-0.58%</b>	<b>0.74%</b>	<b>3.41%</b>	<b>4.15%</b>	<b>2.41%</b>	<b>0.48%</b>	<b>-2.70%</b>	<b>0.90%</b>	<b>0.40%</b>
Lapsed/Drop MEM	695	845	1379	1381	616	840	814	937	804	680	791	835	1129	1017	1381	925	626
Lapes w/out MEM	40	33	74	76	31	40	51	59	70	39	55	36	66	87	76	53	44
<b>Lapsed/Drop Total</b>	<b>735</b>	<b>878</b>	<b>1453</b>	<b>1457</b>	<b>647</b>	<b>880</b>	<b>865</b>	<b>996</b>	<b>874</b>	<b>719</b>	<b>846</b>	<b>871</b>	<b>1195</b>	<b>1104</b>	<b>1457</b>	<b>978</b>	<b>670</b>
<b>Percent Change</b>	<b>-48.17%</b>	<b>19.46%</b>	<b>65.49%</b>	<b>0.28%</b>	<b>-16.19%</b>	<b>36.01%</b>	<b>-1.70%</b>	<b>15.14%</b>	<b>-12.25%</b>	<b>-17.73%</b>	<b>17.66%</b>	<b>2.96%</b>	<b>37.20%</b>	<b>-7.62%</b>	<b>31.97%</b>	<b>-32.88%</b>	<b>-31.49%</b>
New Donors w-MEM	206	143	256	240	209	157	182	170	187	338	448	589	679	661	240	395	257
New w/out MEM	3	13	26	38	26	33	23	48	23	15	58	137	131	36	38	34	7
<b>New Total</b>	<b>209</b>	<b>156</b>	<b>282</b>	<b>278</b>	<b>235</b>	<b>190</b>	<b>205</b>	<b>218</b>	<b>210</b>	<b>353</b>	<b>506</b>	<b>726</b>	<b>810</b>	<b>697</b>	<b>278</b>	<b>429</b>	<b>264</b>
<b>Percent Change</b>	<b>34.84%</b>	<b>-25.36%</b>	<b>80.77%</b>	<b>-1.42%</b>	<b>-8.56%</b>	<b>-19.15%</b>	<b>7.89%</b>	<b>6.34%</b>	<b>-3.67%</b>	<b>68.10%</b>	<b>43.34%</b>	<b>43.48%</b>	<b>11.57%</b>	<b>-13.95%</b>	<b>-60.11%</b>	<b>54.32%</b>	<b>-38.46%</b>
Renewed w-MEM	602	921	900	708	453	551	405	511	564	432	744	673	732	468	708	664	443
Renewed w/out MEM	49	71	61	57	6	35	69	1	20	36	69	66	13	13	57	20	23
<b>Total Renewals</b>	<b>651</b>	<b>992</b>	<b>961</b>	<b>765</b>	<b>459</b>	<b>586</b>	<b>474</b>	<b>512</b>	<b>584</b>	<b>468</b>	<b>813</b>	<b>739</b>	<b>745</b>	<b>481</b>	<b>765</b>	<b>684</b>	<b>466</b>
<b>Percent Change</b>	<b>46.62%</b>	<b>52.38%</b>	<b>-3.13%</b>	<b>-20.40%</b>	<b>-13.56%</b>	<b>27.67%</b>	<b>-19.11%</b>	<b>8.02%</b>	<b>14.06%</b>	<b>-19.86%</b>	<b>73.72%</b>	<b>-9.10%</b>	<b>0.81%</b>	<b>-35.44%</b>	<b>59.04%</b>	<b>-10.59%</b>	<b>-31.87%</b>
<b>Total "MEM"</b>	<b>117226</b>	<b>119731</b>	<b>121850</b>	<b>126900</b>	<b>122339</b>	<b>122475</b>	<b>122726</b>	<b>122942</b>	<b>123152</b>	<b>123591</b>	<b>124107</b>	<b>124917</b>	<b>125618</b>	<b>126309</b>	<b>126900</b>	<b>127367</b>	<b>127552</b>
<b>Percent Change</b>	<b>3.72%</b>	<b>2.14%</b>	<b>1.77%</b>	<b>4.14%</b>	<b>0.13%</b>	<b>0.11%</b>	<b>0.20%</b>	<b>0.18%</b>	<b>0.17%</b>	<b>0.36%</b>	<b>0.42%</b>	<b>0.65%</b>	<b>0.56%</b>	<b>0.55%</b>	<b>0.47%</b>	<b>0.37%</b>	<b>0.15%</b>
<b>Total "LIFETIME"</b>	<b>2035</b>	<b>2096</b>	<b>2142</b>	<b>2208</b>	<b>2149</b>	<b>2149</b>	<b>2153</b>	<b>2155</b>	<b>2163</b>	<b>2170</b>	<b>2183</b>	<b>2197</b>	<b>2201</b>	<b>2207</b>	<b>2208</b>	<b>2216</b>	<b>2216</b>
<b>Total "BSM"</b>	<b>14096</b>	<b>14309</b>	<b>13589</b>	<b>13824</b>	<b>13558</b>	<b>13664</b>	<b>13397</b>	<b>12919</b>	<b>12817</b>	<b>12816</b>	<b>13197</b>	<b>13475</b>	<b>13758</b>	<b>14043</b>	<b>13824</b>	<b>14029</b>	<b>14028</b>

### Last Year vs. This Year

	Feb-12	Feb-13	Change	12 Mo Ave
Active w-MEM	13538	13957	3.09%	13527
Active w/out MEM	852	1181	38.62%	1046
<b>Total Active</b>	<b>14390</b>	<b>15138</b>	<b>5.20%</b>	<b>14573</b>
Lapsed/Dropped	647	670	3.55%	955
New Donors	235	264	12.34%	407
Renewals	459	466	1.53%	610

**Active Donors w-MEM = 13957**

**Lapsed & Zero Dues MEM = 113595**

**Total "MEM" w-Signed Certificate = 127552**

**Member Signed Certificate = "MEM"**

**Total "BSM" = 14028**

**Bylaws defined Sustaining Member = "BSM"**

### NEW-RENEW BREAKDOWN BY TYPE

New Members			
Source	Number	\$ Total	Ave Gift
House Mailing to Inq	10	\$ 340.00	\$ 34.00
Dir Mail Prospecting	1	\$ 25.00	\$ 25.00
Tele-New	0	\$ -	\$ -
Web New Members	218	\$ 9,125.00	\$ 41.86
* Manual Adjustments	35	n/a	n/a
<b>Total</b>	<b>264</b>	<b>\$ 9,490.00</b>	<b>\$ 41.44</b>
Renewals			
Source	Number	\$ Total	Ave Gift
Renew via House Mailing	0	\$ -	\$ -
Dir Mail Renewals	244	\$ 12,616.49	\$ 51.71
Tele-Renewal	19	\$ 720.00	\$ 37.89
Web Renewals	155	\$ 7,340.00	\$ 47.35
* Manual Adjustments	48	n/a	n/a
<b>Total</b>	<b>466</b>	<b>\$ 20,676.49</b>	<b>\$ 49.47</b>

\* Includes Pledge Extensions & New Pledges

**Feb-13 MEMBERSHIP BY STATE --- ACTIVE AND NON ACTIVE**

<u>STATE</u>	<u>TOTAL "MEM"</u>	<u>ACTIVE "MEM"</u>	<u>ACTIVE "SUB"</u>	<u>TOTAL "ACTIVE"</u>	<u>TOTAL "BSM"</u>
AK	646	67	4	71	66
AL	1612	185	6	191	187
AR	826	96	3	99	96
AZ	3004	315	36	351	315
CA	18832	1782	160	1942	1810
CO	3506	423	31	454	426
CT	1435	180	17	197	180
DC	345	38	8	46	39
DE	365	40	9	49	40
FL	7519	780	75	855	772
GA	5715	439	32	471	441
HI	505	67	3	70	64
IA	966	137	10	147	136
ID	721	69	5	74	68
IL	4291	511	42	553	514
IN	2893	361	29	390	366
KS	1167	150	10	160	145
KY	1087	130	6	136	128
LA	996	137	10	147	138
MA	2751	245	27	272	243
MD	2294	278	23	301	281
ME	785	76	7	83	78
MI	4968	456	30	486	456
MN	1944	222	14	236	221
MO	2210	266	20	286	266
MS	620	75	7	82	72

<u>STATE</u>	<u>TOTAL "MEM"</u>	<u>ACTIVE "MEM"</u>	<u>ACTIVE "SUB"</u>	<u>TOTAL "ACTIVE"</u>	<u>TOTAL "BSM"</u>
MT	470	58	4	62	55
NC	3163	365	26	391	367
ND	190	38	2	40	38
NE	599	71	5	76	70
NH	1298	139	15	154	138
NJ	2921	332	35	367	332
NM	1098	144	19	163	148
NV	1735	200	17	217	205
NY	4705	608	63	671	615
OH	4844	669	39	708	664
OK	962	106	6	112	109
OR	2130	169	22	191	177
PA	5595	540	65	605	547
RI	293	35	1	36	34
SC	1570	173	11	184	174
SD	231	38	4	42	38
TN	2259	263	11	274	262
TX	8340	976	86	1062	999
UT	1093	108	11	119	105
VA	4234	610	42	652	607
VT	381	28	5	33	27
WA	4120	379	36	415	384
WI	1835	210	18	228	216
WV	563	52	0	52	51
WY	306	40	4	44	38
XX	614	81	10	91	80

	<u>TOTAL "MEM"</u>	<u>ACTIVE "MEM"</u>	<u>ACTIVE "SUB"</u>	<u>TOTAL "ACTIVE"</u>	<u>TOTAL "BSM"</u>
<b>TOTALS</b>	<b>127552</b>	<b>13957</b>	<b>1181</b>	<b>15138</b>	<b>14028</b>

**DEFINITIONS: MEM = Member Signed Certificate**

**Total MEM = Total # Constituents Per State w-Member Signed Certificate**

**ACTIVE MEM = Current Dues Paying or Lifetime Donor w-Signed Certificate**

**ACTIVE SUB (ACTIVE NON MEM) = Current Dues Paying or Lifetime Donors Who Have NOT Signed the Certificate (Formerly Called "Subscriber")**

**TOTAL ACTIVE = Current Dues Paying or Lifetime Donor**

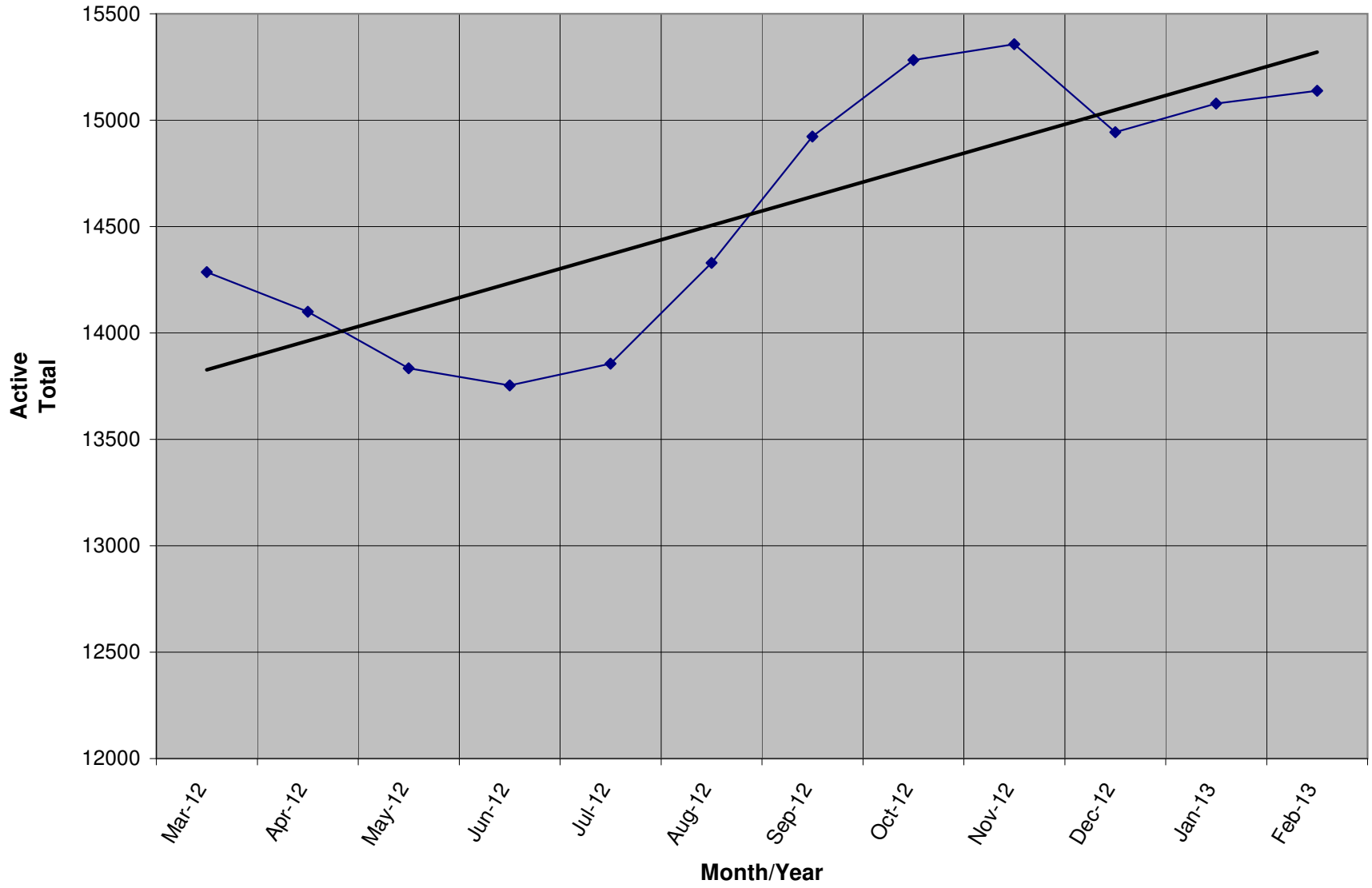
**BSM = By Law Definition of "Sustaining Member" and number used for delegate count**

**(Art 5-3: "Sustaining member" is any Party member who has given at least \$25 to the Party in the prior twelve months, or who is a life member.)**

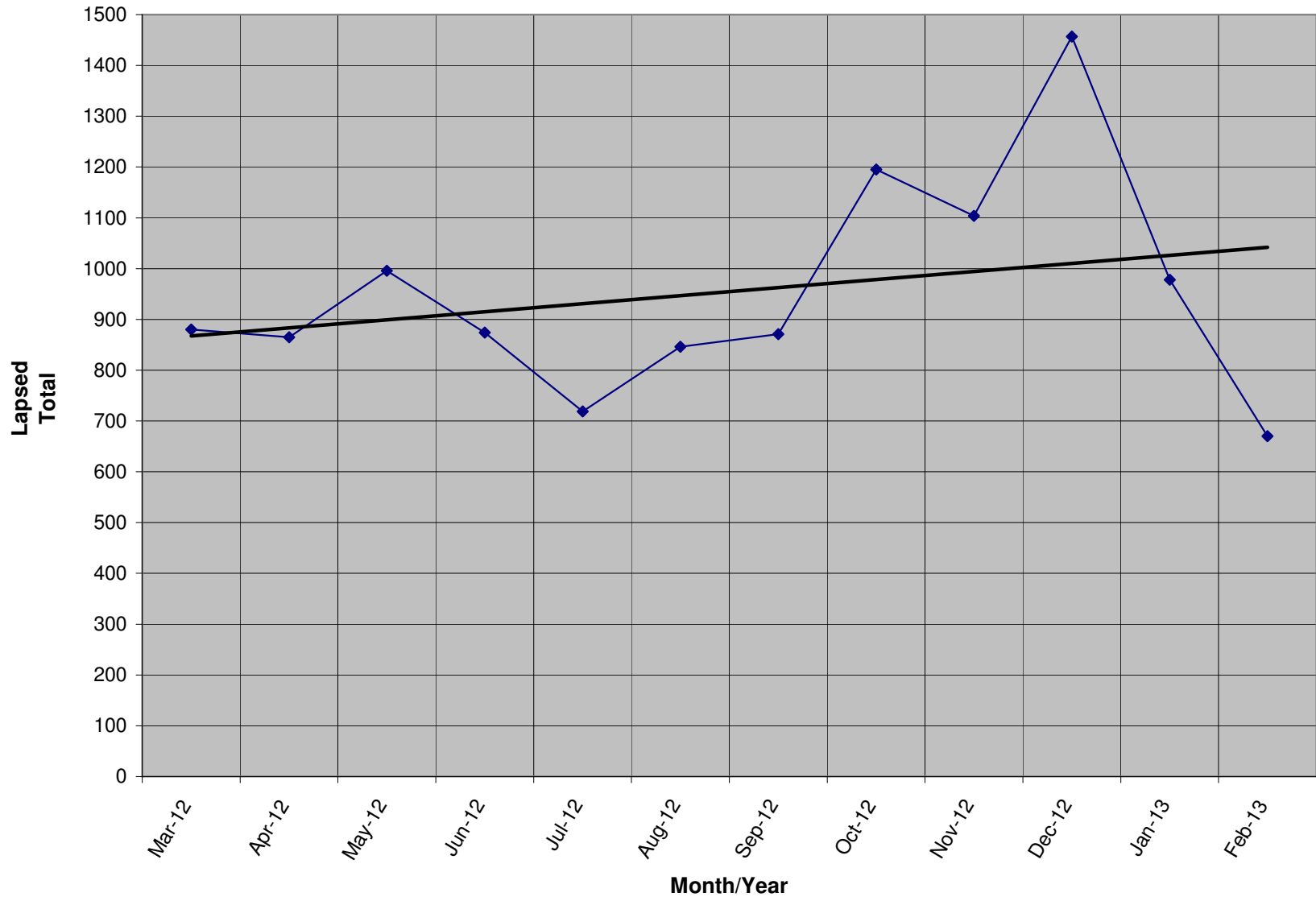
**SUSTAINING MEMBERSHIP STATE RANKINGS - "BSM"**

<u>State</u>	<u>Total BSM</u>	<u>Rank</u>	<u>State</u>	<u>Total BSM</u>	<u>Rank</u>
CA	1810	1	SC	174	27
TX	999	2	NM	148	28
FL	772	3	KS	145	29
OH	664	4	LA	138	30
NY	615	5	NH	138	31
VA	607	6	IA	136	32
PA	547	7	KY	128	33
IL	514	8	OK	109	34
MI	456	9	UT	105	35
GA	441	10	AR	96	36
CO	426	11	XX	80	37
WA	384	12	ME	78	38
NC	367	13	MS	72	39
IN	366	14	NE	70	40
NJ	332	15	ID	68	41
AZ	315	16	AK	66	42
MD	281	17	HI	64	43
MO	266	18	MT	55	44
TN	262	19	WV	51	45
MA	243	20	DE	40	46
MN	221	21	DC	39	47
WI	216	22	ND	38	48
NV	205	23	SD	38	49
AL	187	24	WY	38	50
CT	180	25	RI	34	51
OR	177	26	VT	27	52

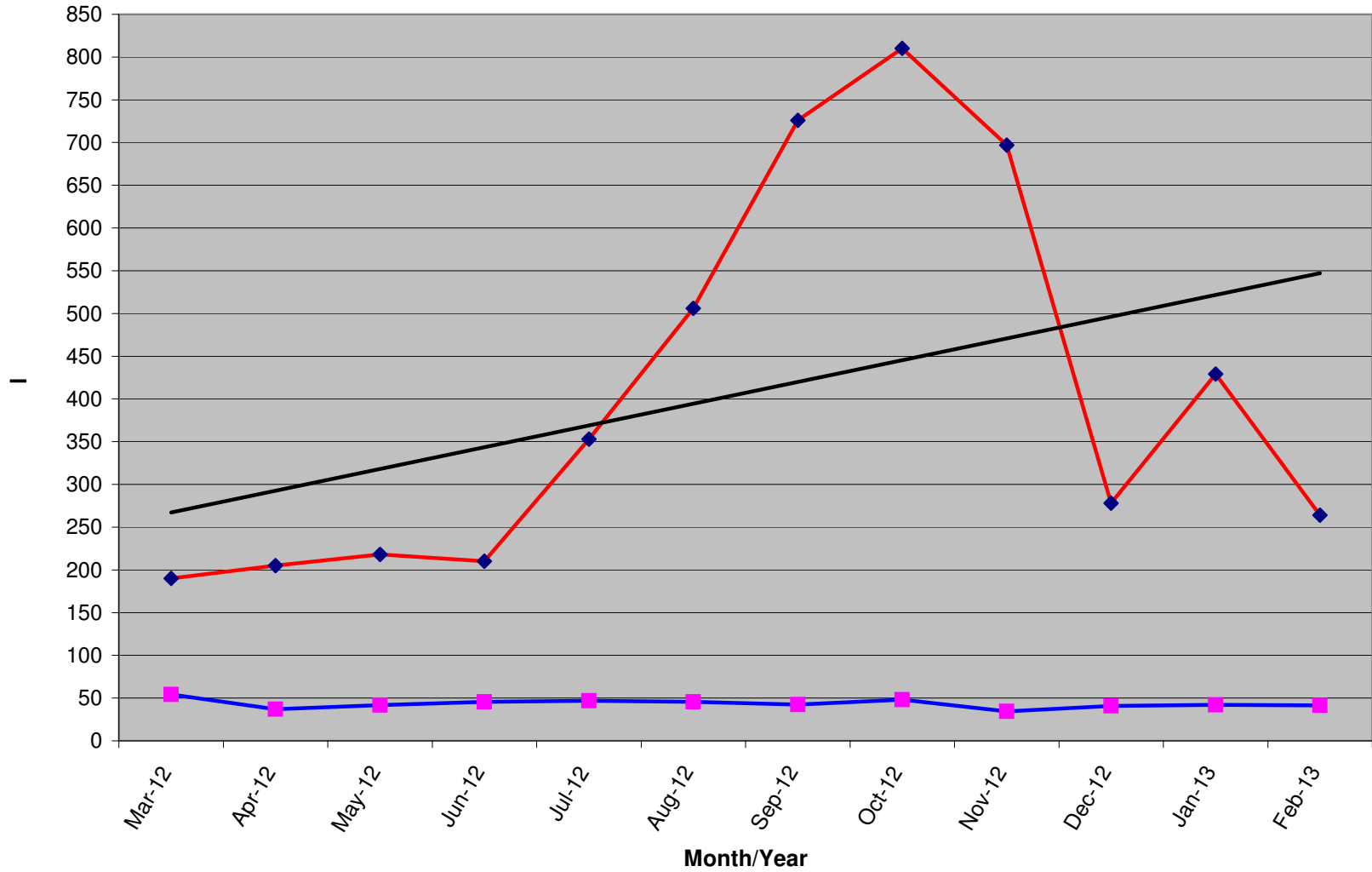
Active Donors - Past 12 Months



Lapsed - Dropped - Donors - Past 12 Months

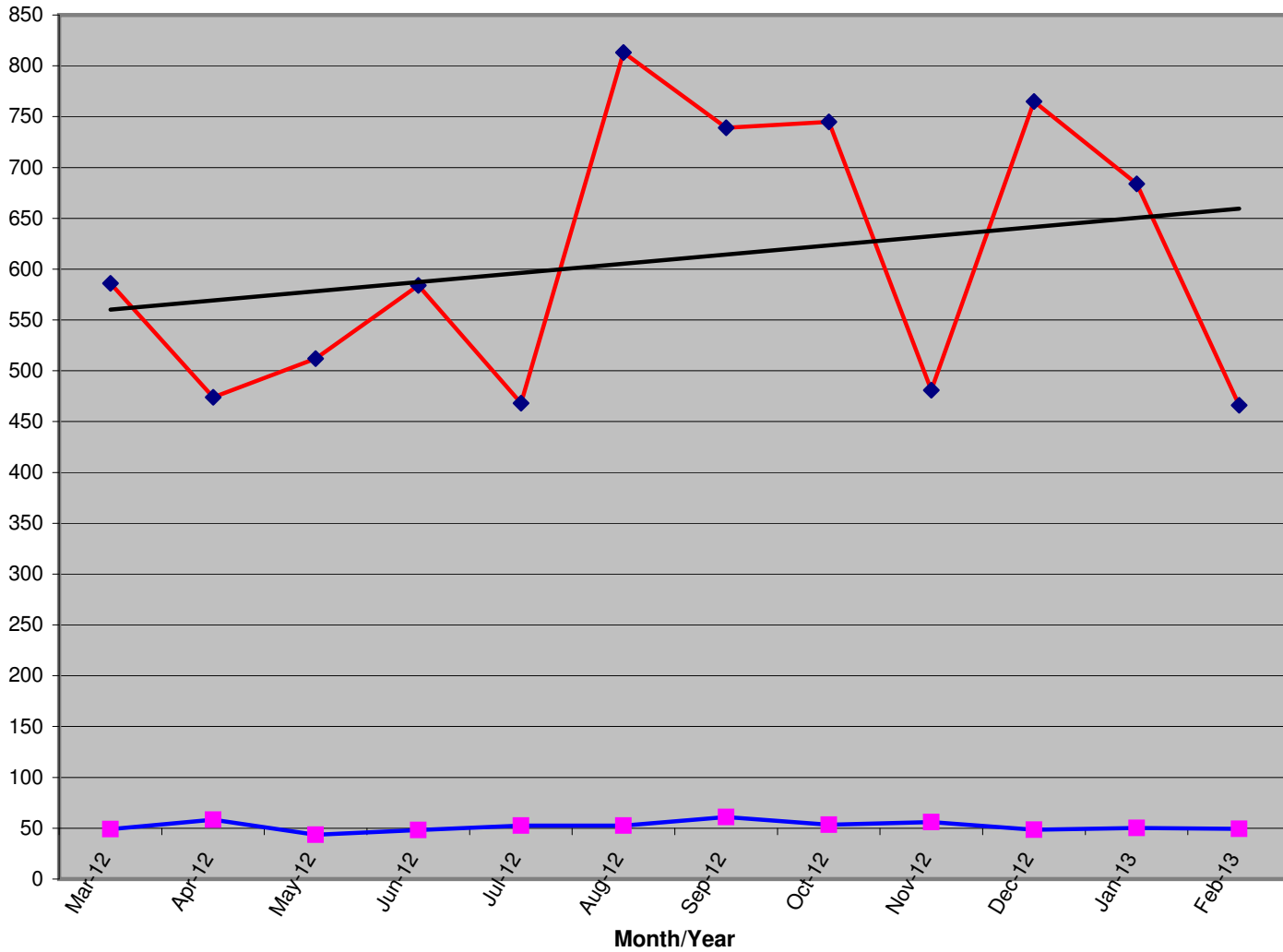


**New Donors / Ave Gift - Past 12 Months**



	Mar-12	Apr-12	May-12	Jun-12	Jul-12	Aug-12	Sep-12	Oct-12	Nov-12	Dec-12	Jan-13	Feb-13
<b>New Donors</b>	190	205	218	210	353	506	726	810	697	278	429	264
<b>Ave Gift</b>	\$ 54.07	\$ 36.99	\$ 41.71	\$ 45.48	\$ 46.73	\$ 45.59	\$ 42.54	\$ 48.26	\$ 34.59	\$ 40.74	\$ 42.17	\$ 41.44

**Renew Donors - Past 12 Months**



	Mar-12	Apr-12	May-12	Jun-12	Jul-12	Aug-12	Sep-12	Oct-12	Nov-12	Dec-12	Jan-13	Feb-13
<b>Renew Total</b>	586	474	512	584	468	813	739	745	481	765	684	466
<b>Ave Gift</b>	\$ 48.97	\$ 58.32	\$ 43.64	\$ 48.33	\$ 52.63	\$ 52.56	\$ 60.92	\$ 53.32	\$ 55.98	\$ 48.50	\$ 50.15	\$ 49.47