

Libertarian National Committee - Membership Report

"Donor" Totals - Feb-19

4 Year & 12 Month Comparison

	Dec-15	Dec-16	Dec-17	Dec-18	Feb-18	Mar-18	Apr-18	May-18	Jun-18	Jul-18	Aug-18	Sep-18	Oct-18	Nov-18	Dec-18	Jan-19	Feb-19
Active w-MEM	11184	18592	14445	14494	14622	14821	14895	14705	14498	14931	15219	15134	15100	14955	14494	14278	14294
Active w/out MEM	509	1814	553	514	534	533	544	549	536	532	534	528	531	525	514	496	503
Total Active Donors	11693	20406	14998	15008	15156	15354	15439	15254	15034	15463	15753	15662	15631	15480	15008	14774	14797
Percent Change					0.66%	1.31%	0.55%	-1.20%	-1.44%	2.85%	1.88%	-0.58%	-0.20%	-0.97%	-3.05%	-1.56%	0.16%
Lapsed/Drop MEM	909	1016	1072	1184	759	965	829	945	1154	784	794	896	969	962	1184	1077	839
Lapse w/out MEM	30	27	23	27	25	37	16	41	34	19	21	32	29	30	27	21	15
Lapsed/Drop Total	939	1043	1095	1211	784	1002	845	986	1188	803	815	928	998	992	1211	1098	854
Percent Change					-19.01%	27.81%	-15.67%	16.69%	20.49%	-32.41%	1.49%	13.87%	7.54%	-0.60%	22.08%	-9.33%	-22.22%
New Donors w-MEM	103	321	444	159	245	329	258	233	203	547	353	215	265	253	159	199	227
New w/out MEM	6	11	15	14	7	22	15	35	13	14	18	17	13	8	14	3	2
New Total	109	332	459	173	252	351	273	268	216	561	371	232	278	261	173	202	229
Percent Change					-26.53%	39.29%	-22.22%	-1.83%	-19.40%	159.72%	-33.87%	-37.47%	19.83%	-6.12%	-33.72%	16.76%	13.37%
Renewed w-MEM	792	723	651	564	630	835	645	522	744	670	729	596	670	564	564	662	628
Renewed w/out MEM	20	8	4	2	1	14	12	11	8	1	5	9	19	16	2	0	20
Total Renewals	812	731	655	566	631	849	657	533	752	671	734	605	689	580	566	662	648
Percent Change					-7.75%	34.55%	-22.61%	-18.87%	41.09%	-10.77%	9.39%	-17.57%	13.88%	-15.82%	-2.41%	16.96%	-2.11%
Total "MEM" *	135197	145814	138815	137321	134697	135008	135249	135435	135656	136255	136533	136720	136952	137205	137321	137535	137726
Percent Change					0.17%	0.23%	0.18%	0.14%	0.16%	0.44%	0.20%	0.14%	0.17%	0.18%	0.08%	0.16%	0.14%
Total "LIFETIME" *	2458	2571	2618	2652	2569	2574	2580	2585	2594	2636	2635	2643	2643	2646	2652	2652	2658
Total "BSM"	11045	19003	14668	14639	14702	14798	14891	14819	14634	14955	15298	15163	15150	15016	14639	14385	14372

* Note: 01/18 Drop in Total Mem & TL Lifetime is result of PNCOA & Death Record append of 160k national records resulting in about 6k newly identified deceased effecting 80+ "active" record.

Last Year vs. This Year

	Feb-18	Feb-19	Change	12 Mo Ave	Active Donors w-MEM =	14294
Active w-MEM	14622	14294	-2.24%	14777	Lapsed & Zero Dues MEM =	123432
Active w/out MEM	534	503	-5.81%	527	Total "MEM" w-Signed Certificate =	137726
Total Active Donors	15156	14797	-2.37%	15304	Member Signed Certificate =	"MEM"
Lapsed/Dropped	784	854	8.93%	977	Total "BSM" =	14372
New Donors	252	229	-9.13%	285	Bylaws Defined Sustaining Member =	"BSM"
Renewals	631	648	2.69%	662		

Feb-19 MEMBERSHIP BY STATE --- ACTIVE AND NON ACTIVE

SUSTAINING MEMBERSHIP STATE RANKINGS - "BSM"

STATE	TOTAL "MEM"	ACTIVE "MEM"	ACTIVE "SUB"	TOTAL "ACTIVE"	TOTAL "BSM"	STATE	TOTAL "MEM"	ACTIVE "MEM"	ACTIVE "SUB"	TOTAL "ACTIVE"	TOTAL "BSM"
AK	679	72	2	74	71	MT	574	59	3	62	62
AL	1833	205	2	207	209	NC	3501	387	11	398	389
AR	919	100	2	102	98	ND	242	33	3	36	32
AZ	3242	330	13	343	337	NE	664	91	0	91	93
CA	18740	1553	64	1617	1562	NH	1448	177	2	179	173
CO	3891	472	9	481	471	NJ	3030	319	11	330	315
CT	1487	160	8	168	161	NM	1180	139	3	142	141
DC	369	39	2	41	38	NV	1888	175	14	189	176
DE	412	51	1	52	48	NY	5063	676	36	712	677
FL	8290	804	31	835	807	OH	5089	639	12	651	637
GA	5877	429	13	442	429	OK	1122	170	3	173	168
HI	538	56	4	60	57	OR	2215	152	14	166	154
IA	1076	126	4	130	126	PA	5937	603	19	622	593
ID	805	81	2	83	84	RI	309	34	2	36	34
IL	4452	483	16	499	485	SC	1981	210	2	212	213
IN	3386	389	13	402	395	SD	280	42	2	44	42
KS	1198	126	3	129	128	TN	2677	318	5	323	328
KY	1241	136	6	142	135	TX	9621	1084	39	1123	1098
LA	1220	178	5	183	181	UT	1220	101	5	106	101
MA	2807	246	12	258	245	VA	4854	571	15	586	581
MD	2398	278	11	289	278	VT	396	32	3	35	31
ME	821	77	2	79	78	WA	4611	461	15	476	472
MI	5203	459	13	472	460	WI	2115	264	11	275	267
MN	2087	203	8	211	208	WV	616	62	0	62	64
MO	2355	240	11	251	245	WY	331	43	1	44	42
MS	736	92	3	95	90	XX	700	67	12	79	63

State	Total BSM	Rank	State	Total BSM	Rank
CA	1562	1	NH	173	27
TX	1098	2	OK	168	28
FL	807	3	CT	161	29
NY	677	4	OR	154	30
OH	637	5	NM	141	31
PA	593	6	KY	135	32
VA	581	7	KS	128	33
IL	485	8	IA	126	34
WA	472	9	UT	101	35
CO	471	10	AR	98	36
MI	460	11	NE	93	37
GA	429	12	MS	90	38
IN	395	13	ID	84	39
NC	389	14	ME	78	40
AZ	337	15	AK	71	41
TN	328	16	WV	64	42
NJ	315	17	MT	62	43
MD	278	18	HI	57	44
WI	267	19	DE	48	45
MA	245	20	SD	42	46
MO	245	21	WY	42	47
SC	213	22	DC	38	48
AL	209	23	RI	34	49
MN	208	24	ND	32	50
LA	181	25	VT	31	51
NV	176	26	XX	63	52
			Total:	14372	

TOTAL	ACTIVE	ACTIVE	TOTAL	TOTAL
"MEM"	"MEM"	"SUB"	"ACTIVE"	"BSM"
TOTALS	137726	14294	503	14797

DEFINITIONS: MEM = Member Signed Certificate

Total MEM = Total # Constituents Per State w-Member Signed Certificate

ACTIVE MEM = Current Dues Paying or Lifetime Donor w-Signed Certificate

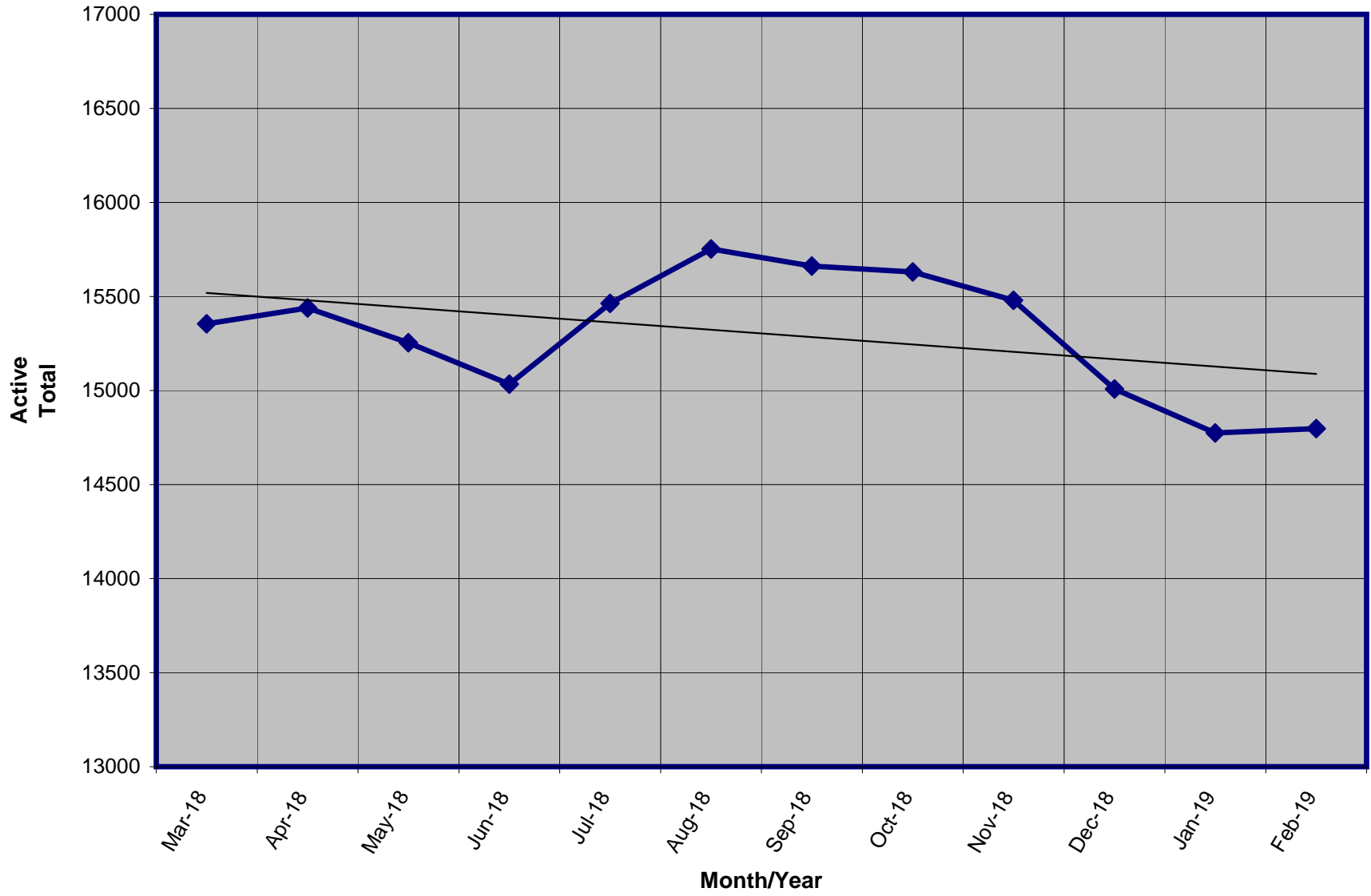
ACTIVE SUB (ACTIVE NON MEM) = Current Dues Paying or Lifetime Donors Who Have NOT Signed the Certificate (Formerly Called "Subscriber")

TOTAL ACTIVE = Current Dues Paying or Lifetime Donor

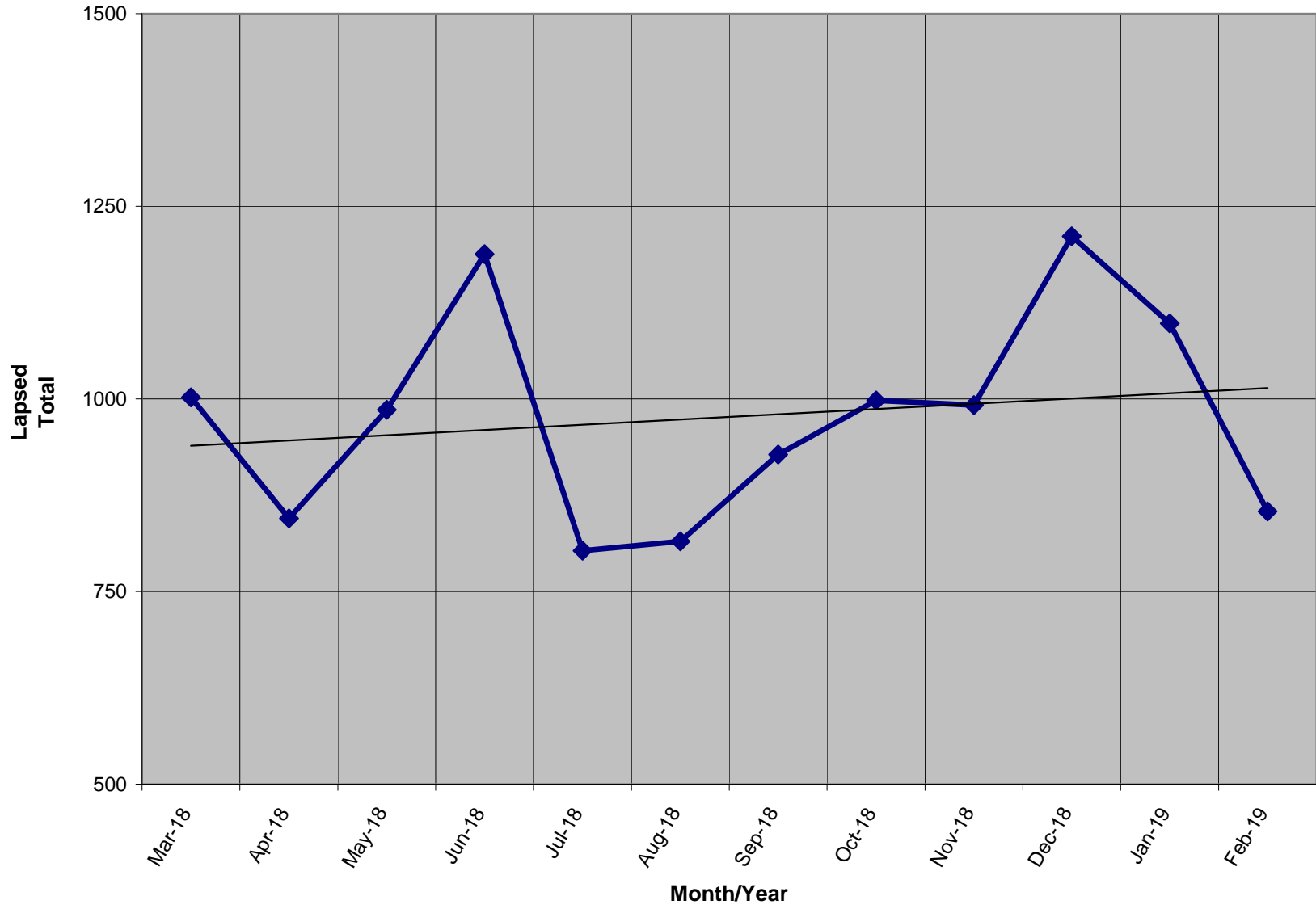
BSM = By Law Definition of "Sustaining Member" and number used for delegate count

(Art 5-3: "Sustaining member" is any Party member who has given at least \$25 to the Party in the prior twelve months, or who is a life member.)

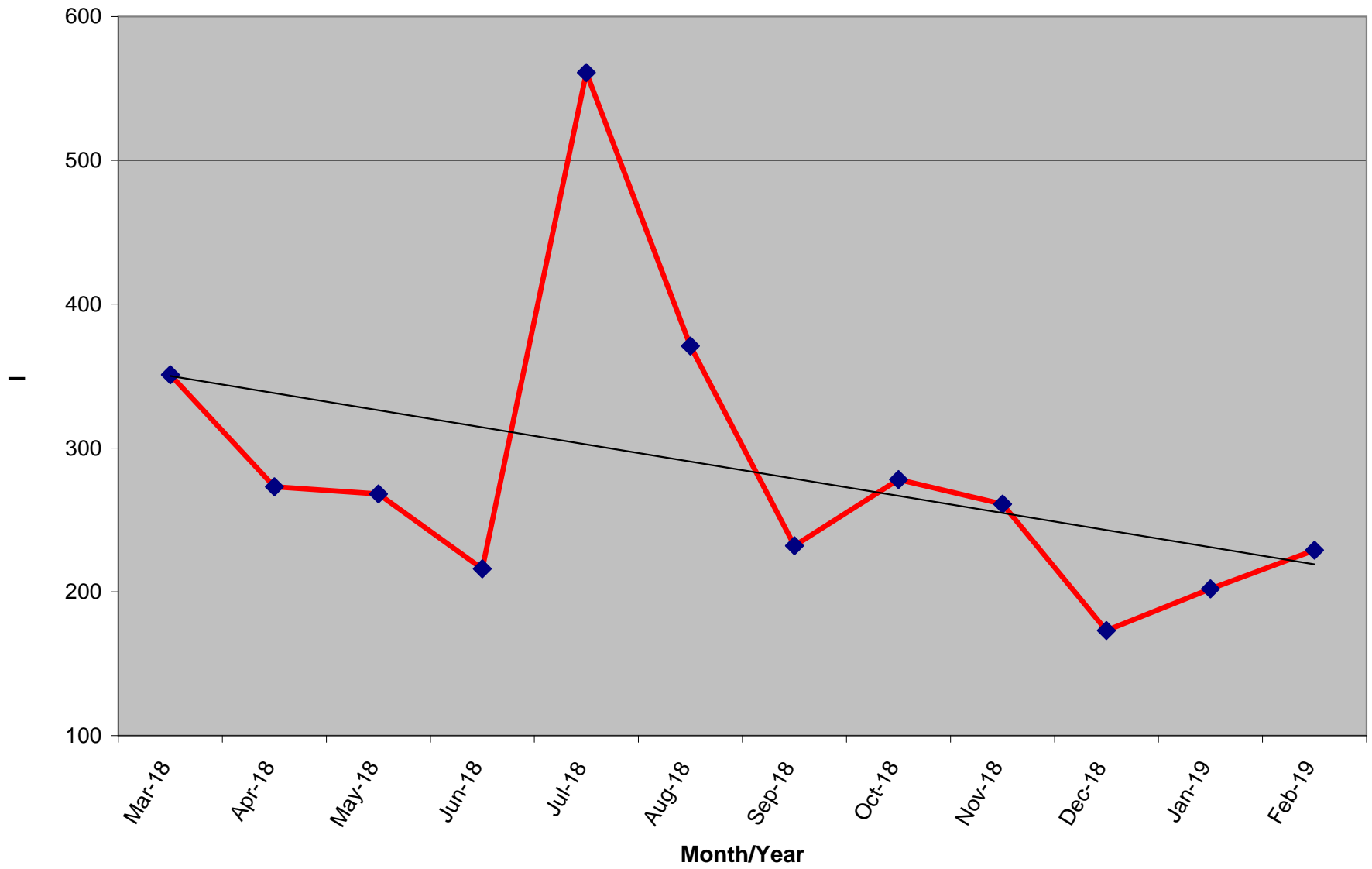
Active Donors - Past 12 Months



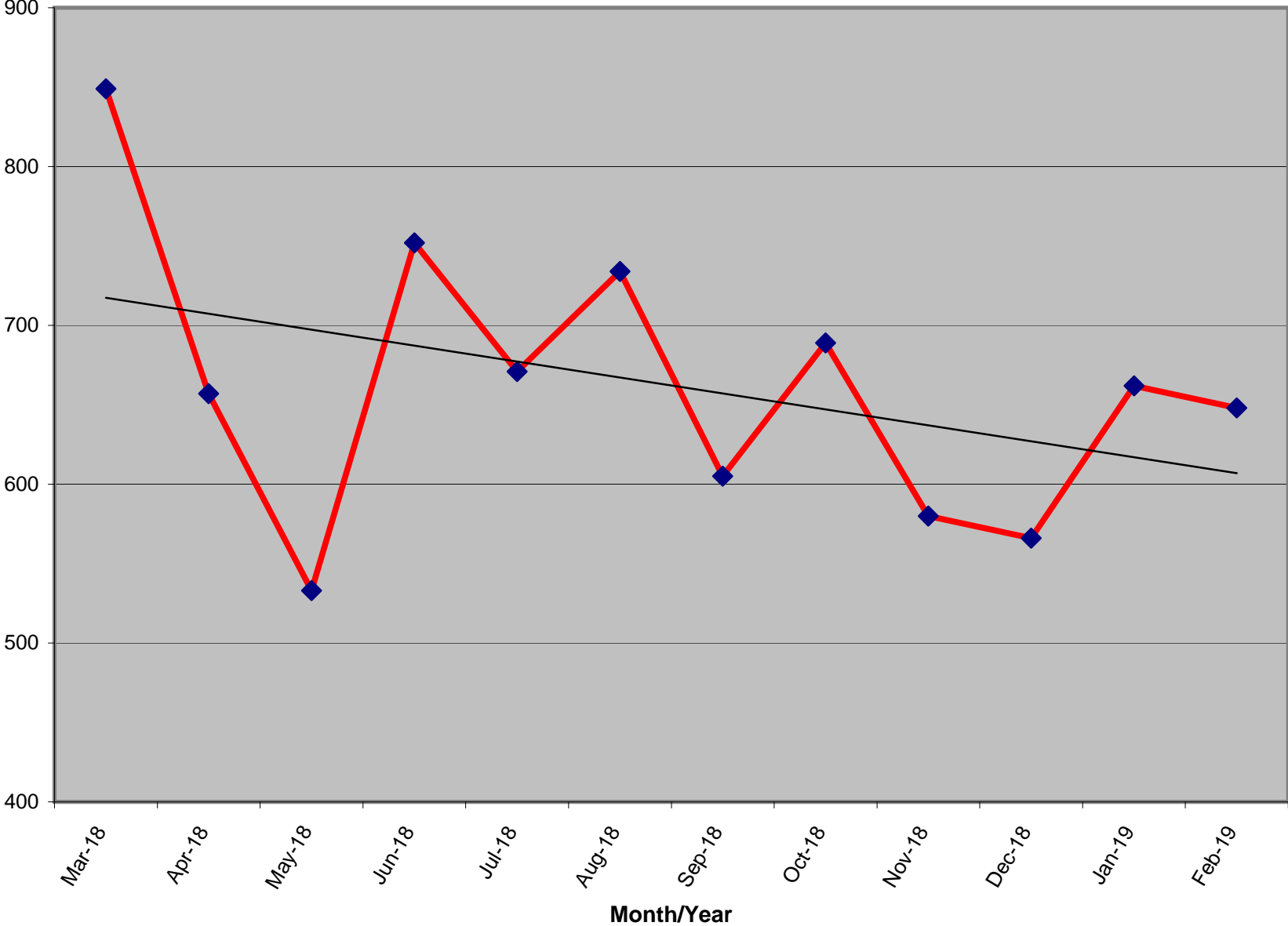
Lapsed - Dropped - Donors - Past 12 Months



New Donors Past 12 Months



Renew Donors - Past 12 Months



% OF ACTIVE MEMBERS VS. REGISTERED LIBERTARIAN VOTERS BY STATE

STATE	TI Reg Voters	Reg Lib	% Reg L to TI Reg	Total Active By State	Active to Registered
AK	520,646	7,593	1.46%	72	0.95%
AL	3,303,122	0	n/a	205	n/a
AR	1,744,141	348	0.02%	100	28.74%
AZ	3,662,382	31,554	0.86%	330	1.05%
CA	18,854,829	141,368	0.75%	1,553	1.10%
CO	3,219,953	36,911	1.15%	472	1.28%
CT	2,156,316	2,959	0.14%	160	5.41%
DC	473,526	1,025	0.22%	39	3.80%
DE	689,083	1,640	0.24%	51	3.11%
FL	13,694,743	31,682	0.23%	804	2.54%
GA	6,443,457	0	n/a	429	n/a
HI	716,458	0	n/a	56	n/a
IA	1,955,058	9,331	0.48%	126	1.35%
ID	801,151	6,482	0.81%	81	1.25%
IL	8,780,685	0	n/a	483	n/a
IN	4,355,147	0	n/a	389	n/a
KS	1,611,223	13,746	0.85%	126	0.92%
KY	3,346,095	8,250	0.25%	136	1.65%
LA	2,972,024	14,569	0.49%	178	1.22%
MA	4,574,967	15,787	0.35%	246	1.56%
MD	3,903,599	20,894	0.54%	278	1.33%
ME	1,028,602	5,554	0.54%	77	1.39%
MI	7,347,955	0	n/a	459	n/a
MN	3,268,360	0	n/a	203	n/a
MO	4,123,266	0	n/a	240	n/a
MS	2,044,713	0	n/a	92	n/a

Registration totals provided by Richard Winger as of 02/01/19

STATE	TI Reg Voters	Reg Lib	% Reg L to TI Reg	Total Active By State	Active to Registered
MT	695,971	0	n/a	59	n/a
NC	6,571,602	36,010	0.55%	387	1.07%
ND	429,978	0	n/a	33	n/a
NE	1,195,069	13,012	1.09%	91	0.70%
NH	961,819	162	0.02%	177	109.26%
NJ	5,778,406	8,874	0.15%	319	3.59%
NM	1,220,056	7,792	0.64%	139	1.78%
NV	1,468,671	14,322	0.98%	175	1.22%
NY	12,695,762	9,757	0.08%	676	6.93%
OH	7,914,320	0	n/a	639	n/a
OK	2,112,991	8,497	0.40%	170	2.00%
OR	2,652,935	18,962	0.71%	152	0.80%
PA	8,609,880	44,848	0.52%	603	1.34%
RI	772,360	0	n/a	34	n/a
SC	3,268,076	0	n/a	210	n/a
SD	526,773	1,673	0.32%	42	2.51%
TN	4,112,566	0	n/a	318	n/a
TX	14,748,880	0	n/a	1,084	n/a
UT	1,307,119	10,927	0.84%	101	0.92%
VA	5,473,173	0	n/a	571	n/a
VT	459,719	0	n/a	32	n/a
WA	4,646,246	0	n/a	461	n/a
WI	5,842,402	0	n/a	264	n/a
WV	1,228,123	5,616	0.46%	62	1.10%
WY	262,620	2,410	0.92%	43	1.78%
XX	356,791	0	n/a	67	n/a
Totals	200,903,809	532,555	0.55%	14,294	2.68%

% OF ACTIVE MEMBERS VS. 2010 CENSUS POPULATION BY STATE

STATE	2010 Census	TI Active By State	Active to Population
AK	710,231	72	0.0101%
AL	4,779,736	205	0.0043%
AR	2,915,918	100	0.0034%
AZ	6,392,017	330	0.0052%
CA	37,253,956	1,553	0.0042%
CO	5,029,196	472	0.0094%
CT	3,574,097	160	0.0045%
DC	601,723	39	0.0065%
DE	897,934	51	0.0057%
FL	18,801,310	804	0.0043%
GA	9,687,653	429	0.0044%
HI	1,360,301	56	0.0041%
IA	3,046,355	126	0.0041%
ID	1,567,582	81	0.0052%
IL	12,830,632	483	0.0038%
IN	6,483,802	389	0.0060%
KS	2,853,118	126	0.0044%
KY	4,339,367	136	0.0031%
LA	4,533,372	178	0.0039%
MA	6,547,629	246	0.0038%
MD	5,773,552	278	0.0048%
ME	1,328,361	77	0.0058%
MI	9,883,640	459	0.0046%
MN	5,303,925	203	0.0038%
MO	5,988,927	240	0.0040%
MS	2,967,297	92	0.0031%

ACTIVE TO POPULATION BY RANK

STATE	2010 Census	TI Active By State	Active to Population
MT	989,415	59	0.0060%
NC	9,535,483	387	0.0041%
ND	672,591	33	0.0049%
NE	1,826,341	91	0.0050%
NH	1,316,470	177	0.0134%
NJ	8,791,894	319	0.0036%
NM	2,059,179	139	0.0068%
NV	2,700,551	175	0.0065%
NY	19,378,102	676	0.0035%
OH	11,536,504	639	0.0055%
OK	3,751,351	170	0.0045%
OR	3,831,074	152	0.0040%
PA	12,702,379	603	0.0047%
RI	1,052,567	34	0.0032%
SC	4,625,364	210	0.0045%
SD	814,180	42	0.0052%
TN	6,346,105	318	0.0050%
TX	25,145,561	1,084	0.0043%
UT	2,763,885	101	0.0037%
VA	8,001,024	571	0.0071%
VT	625,741	32	0.0051%
WA	6,724,540	461	0.0069%
WI	5,686,986	264	0.0046%
WV	1,852,994	62	0.0033%
WY	563,626	43	0.0076%
Totals	308,745,538	14,227	0.0046%

STATE	Rank	TI Active By State	Active to Population
NH	1	177	0.0134%
AK	2	72	0.0101%
CO	3	472	0.0094%
WY	4	43	0.0076%
VA	5	571	0.0071%
WA	6	461	0.0069%
NM	7	139	0.0068%
DC	8	39	0.0065%
NV	9	175	0.0065%
IN	10	389	0.0060%
MT	11	59	0.0060%
ME	12	77	0.0058%
DE	13	51	0.0057%
OH	14	639	0.0055%
ID	15	81	0.0052%
AZ	16	330	0.0052%
SD	17	42	0.0052%
VT	18	32	0.0051%
TN	19	318	0.0050%
NE	20	91	0.0050%
ND	21	33	0.0049%
MD	22	278	0.0048%
PA	23	603	0.0047%
MI	24	459	0.0046%
WI	25	264	0.0046%
SC	26	210	0.0045%

STATE	Rank	TI Active By State	Active to Population
OK	27	170	0.0045%
CT	28	160	0.0045%
GA	29	429	0.0044%
KS	30	126	0.0044%
TX	31	1,084	0.0043%
AL	32	205	0.0043%
FL	33	804	0.0043%
CA	34	1,553	0.0042%
IA	35	126	0.0041%
HI	36	56	0.0041%
NC	37	387	0.0041%
MO	38	240	0.0040%
OR	39	152	0.0040%
LA	40	178	0.0039%
MN	41	203	0.0038%
IL	42	483	0.0038%
MA	43	246	0.0038%
UT	44	101	0.0037%
NJ	45	319	0.0036%
NY	46	676	0.0035%
AR	47	100	0.0034%
WV	48	62	0.0033%
RI	49	34	0.0032%
KY	50	136	0.0031%
MS	51	92	0.0031%
Totals		14,227	0.0046%

** 2010 US Census Figures - does not include PR or other territories or out of US ("XX" states)*