

# Libertarian National Committee - Membership Report

## "Donor" Totals - Dec-14

### 4 Year & 12 Month Comparison

	Dec-10	Dec-11	Dec-12	Dec-13	Dec-13	Jan-14	Feb-14	Mar-14	Apr-14	May-14	Jun-14	Jul-14	Aug-14	Sep-14	Oct-14	Nov-14	Dec-14
Active w-MEM	14077	13468	13749	13670	13670	13615	13693	13978	14075	14212	14136	14260	14134	13734	13442	12947	12053
Active w/out MEM	991	859	1194	967	967	1084	1095	1113	1101	1154	1146	1023	1018	990	944	930	747
<b>Total Active Donors</b>	<b>15068</b>	<b>14327</b>	<b>14943</b>	<b>14637</b>	<b>14637</b>	<b>14699</b>	<b>14788</b>	<b>15091</b>	<b>15176</b>	<b>15366</b>	<b>15282</b>	<b>15283</b>	<b>15152</b>	<b>14724</b>	<b>14386</b>	<b>13877</b>	<b>12800</b>
<b>Percent Change</b>	<b>2.76%</b>	<b>-4.92%</b>	<b>4.30%</b>	<b>0.89%</b>	<b>0.89%</b>	<b>0.42%</b>	<b>0.61%</b>	<b>2.05%</b>	<b>0.56%</b>	<b>1.25%</b>	<b>-0.55%</b>	<b>0.01%</b>	<b>-0.86%</b>	<b>-2.82%</b>	<b>-2.30%</b>	<b>-3.54%</b>	<b>-7.76%</b>
Lapsed/Drop MEM	845	1379	1381	1245	1245	870	637	758	663	634	594	608	637	945	1385	1235	1733
Lapse w/out MEM	33	74	76	82	82	58	24	41	39	26	44	27	31	75	98	52	203
<b>Lapsed/Drop Total</b>	<b>878</b>	<b>1453</b>	<b>1457</b>	<b>1327</b>	<b>1327</b>	<b>928</b>	<b>661</b>	<b>799</b>	<b>702</b>	<b>660</b>	<b>638</b>	<b>635</b>	<b>668</b>	<b>1020</b>	<b>1483</b>	<b>1287</b>	<b>1936</b>
<b>Percent Change</b>	<b>19.46%</b>	<b>65.49%</b>	<b>0.28%</b>	<b>11.89%</b>	<b>11.89%</b>	<b>-30.07%</b>	<b>-28.77%</b>	<b>20.88%</b>	<b>-12.14%</b>	<b>-5.98%</b>	<b>-3.33%</b>	<b>-0.47%</b>	<b>5.20%</b>	<b>52.69%</b>	<b>45.39%</b>	<b>-13.22%</b>	<b>50.43%</b>
New Donors w-MEM	143	256	240	267	267	234	199	321	270	219	125	148	153	94	235	208	110
New w/out MEM	13	26	38	168	168	128	18	25	8	37	27	5	18	17	10	2	6
<b>New Total</b>	<b>156</b>	<b>282</b>	<b>278</b>	<b>435</b>	<b>435</b>	<b>362</b>	<b>217</b>	<b>346</b>	<b>278</b>	<b>256</b>	<b>152</b>	<b>153</b>	<b>171</b>	<b>111</b>	<b>245</b>	<b>210</b>	<b>116</b>
<b>Percent Change</b>	<b>-25.36%</b>	<b>80.77%</b>	<b>-1.42%</b>	<b>40.32%</b>	<b>40.32%</b>	<b>-16.78%</b>	<b>-40.06%</b>	<b>59.45%</b>	<b>-19.65%</b>	<b>-7.91%</b>	<b>-40.63%</b>	<b>0.66%</b>	<b>11.76%</b>	<b>-35.09%</b>	<b>120.72%</b>	<b>-14.29%</b>	<b>-44.76%</b>
Renewed w-MEM	921	900	708	966	966	581	516	722	490	552	393	584	358	451	858	532	729
Renewed w/out MEM	71	61	57	55	55	47	17	34	19	42	9	-101	8	30	42	36	14
<b>Total Renewals</b>	<b>992</b>	<b>961</b>	<b>765</b>	<b>1021</b>	<b>1021</b>	<b>628</b>	<b>533</b>	<b>756</b>	<b>509</b>	<b>594</b>	<b>402</b>	<b>483</b>	<b>366</b>	<b>481</b>	<b>900</b>	<b>568</b>	<b>743</b>
<b>Percent Change</b>	<b>52.38%</b>	<b>-3.13%</b>	<b>-20.40%</b>	<b>-4.40%</b>	<b>-4.40%</b>	<b>-38.49%</b>	<b>-15.13%</b>	<b>41.84%</b>	<b>-32.67%</b>	<b>16.70%</b>	<b>-32.32%</b>	<b>20.15%</b>	<b>-24.22%</b>	<b>31.42%</b>	<b>87.11%</b>	<b>-36.89%</b>	<b>30.81%</b>
<b>Total "MEM"</b>	<b>119731</b>	<b>121850</b>	<b>126900</b>	<b>130507</b>	<b>130507</b>	<b>130841</b>	<b>131091</b>	<b>131396</b>	<b>131735</b>	<b>131994</b>	<b>132151</b>	<b>132475</b>	<b>132622</b>	<b>132736</b>	<b>133118</b>	<b>133314</b>	<b>133400</b>
<b>Percent Change</b>	<b>2.14%</b>	<b>1.77%</b>	<b>4.14%</b>	<b>0.25%</b>	<b>0.25%</b>	<b>0.26%</b>	<b>0.19%</b>	<b>0.23%</b>	<b>0.26%</b>	<b>0.20%</b>	<b>0.12%</b>	<b>0.25%</b>	<b>0.11%</b>	<b>0.09%</b>	<b>0.29%</b>	<b>0.15%</b>	<b>0.06%</b>
<b>Total "LIFETIME"</b>	<b>2096</b>	<b>2142</b>	<b>2208</b>	<b>2295</b>	<b>2295</b>	<b>2304</b>	<b>2308</b>	<b>2309</b>	<b>2312</b>	<b>2319</b>	<b>2377</b>	<b>2441</b>	<b>2443</b>	<b>2445</b>	<b>2445</b>	<b>2445</b>	<b>2446</b>
<b>Total "BSM"</b>	<b>14309</b>	<b>13589</b>	<b>13824</b>	<b>13869</b>	<b>13869</b>	<b>13836</b>	<b>13764</b>	<b>13919</b>	<b>14027</b>	<b>14189</b>	<b>14092</b>	<b>14158</b>	<b>13963</b>	<b>13533</b>	<b>13437</b>	<b>12778</b>	<b>12526</b>

### Last Year vs. This Year

	Dec-13	Dec-14	Change	12 Mo Ave		
Active w-MEM	13670	12053	-11.83%	13690	<u>Active Donors w-MEM =</u>	12053
Active w/out MEM	967	747	-22.75%	1029	<u>Lapsed &amp; Zero Dues MEM =</u>	121347
<b>Total Active Donors</b>	<b>14637</b>	<b>12800</b>	<b>-12.55%</b>	<b>14719</b>	<u>Total "MEM" w-Signed Certificate =</u>	133400
Lapsed/Dropped	1327	1936	45.89%	951	<u>Member Signed Certificate =</u>	"MEM"
New Donors	435	116	-73.33%	218	<u>Total "BSM" =</u>	12526
Renewals	1021	743	-27.23%	580	<u>Bylaws Defined Sustaining Member =</u>	"BSM"

**Dec-14 MEMBERSHIP BY STATE --- ACTIVE AND NON ACTIVE**

<u>STATE</u>	<u>TOTAL "MEM"</u>	<u>ACTIVE "MEM"</u>	<u>ACTIVE "SUB"</u>	<u>TOTAL "ACTIVE"</u>	<u>TOTAL "BSM"</u>
AK	666	65	1	66	65
AL	1696	151	6	157	158
AR	878	84	4	88	88
AZ	3151	281	19	300	298
CA	19243	1600	103	1703	1643
CO	3657	375	23	398	392
CT	1472	162	9	171	169
DC	352	28	4	32	29
DE	379	29	3	32	30
FL	7905	698	68	766	715
GA	5850	362	19	381	372
HI	531	56	5	61	55
IA	1009	97	4	101	99
ID	754	52	2	54	54
IL	4444	414	29	443	430
IN	3129	330	14	344	348
KS	1222	151	4	155	153
KY	1160	103	5	108	113
LA	1061	116	9	125	126
MA	2807	197	9	206	197
MD	2429	244	19	263	248
ME	798	55	3	58	54
MI	5131	405	14	419	420
MN	2007	171	9	180	184
MO	2324	224	19	243	233
MS	694	92	5	97	93

<u>STATE</u>	<u>TOTAL "MEM"</u>	<u>ACTIVE "MEM"</u>	<u>ACTIVE "SUB"</u>	<u>TOTAL "ACTIVE"</u>	<u>TOTAL "BSM"</u>
MT	507	53	5	58	57
NC	3314	309	17	326	326
ND	217	35	1	36	36
NE	647	77	3	80	78
NH	1340	124	6	130	127
NJ	3034	250	17	267	261
NM	1111	88	10	98	94
NV	1905	184	10	194	195
NY	4913	520	41	561	542
OH	5151	566	18	584	593
OK	1023	88	2	90	91
OR	2198	159	18	177	164
PA	5838	473	32	505	494
RI	307	24	1	25	25
SC	1686	152	5	157	158
SD	252	40	2	42	41
TN	2371	207	3	210	219
TX	8912	846	65	911	890
UT	1135	82	10	92	80
VA	4624	563	24	587	596
VT	395	28	3	31	29
WA	4303	328	23	351	341
WI	1909	177	11	188	177
WV	595	51	1	52	53
WY	315	26	1	27	27
XX	649	61	9	70	66

	<u>TOTAL "MEM"</u>	<u>ACTIVE "MEM"</u>	<u>ACTIVE "SUB"</u>	<u>TOTAL "ACTIVE"</u>	<u>TOTAL "BSM"</u>
<b>TOTALS</b>	<b>133400</b>	<b>12053</b>	<b>747</b>	<b>12800</b>	<b>12526</b>

*DEFINITIONS: MEM = Member Signed Certificate*

*Total MEM = Total # Constituents Per State w-Member Signed Certificate*

*ACTIVE MEM = Current Dues Paying or Lifetime Donor w-Signed Certificate*

*ACTIVE SUB (ACTIVE NON MEM) = Current Dues Paying or Lifetime Donors Who Have NOT Signed the Certificate (Formerly Called "Subscriber")*

*TOTAL ACTIVE = Current Dues Paying or Lifetime Donor*

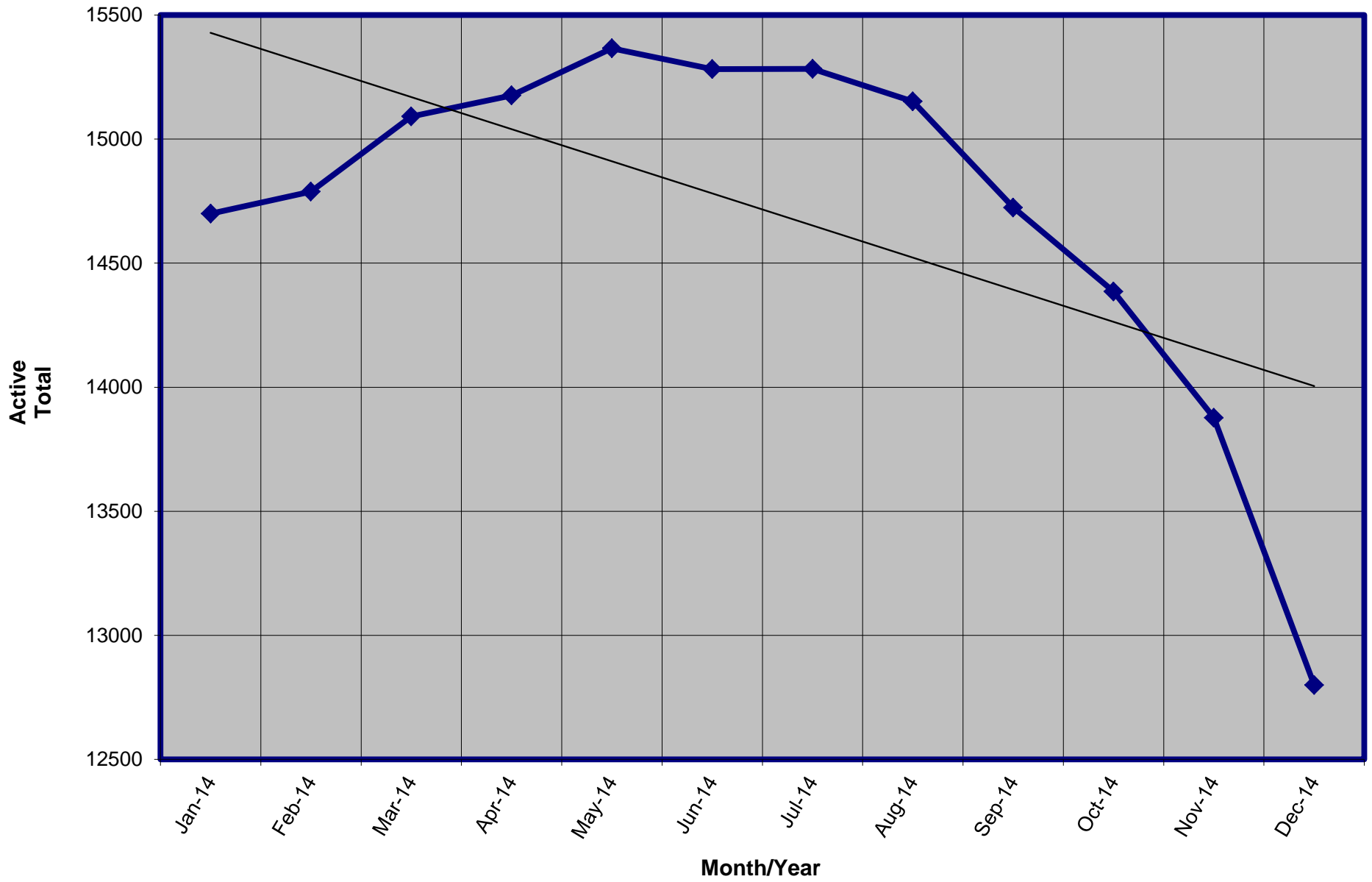
*BSM = By Law Definition of "Sustaining Member" and number used for delegate count*

*(Art 5-3: "Sustaining member" is any Party member who has given at least \$25 to the Party in the prior twelve months, or who is a life member.)*

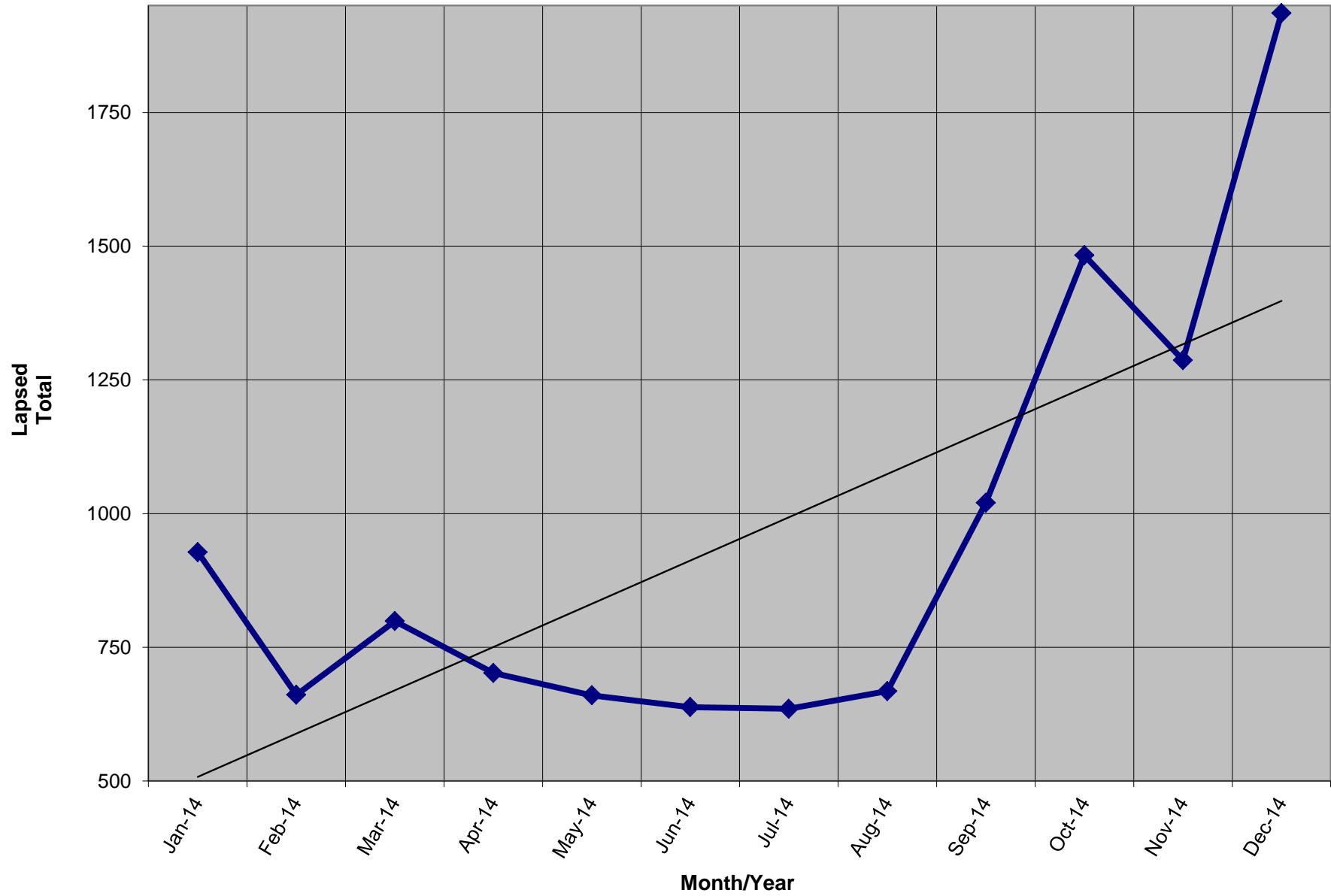
**SUSTAINING MEMBERSHIP STATE RANKINGS - "BSM"**

<u>State</u>	<u>Total BSM</u>	<u>Rank</u>	<u>State</u>	<u>Total BSM</u>	<u>Rank</u>
CA	1643	1	SC	158	27
TX	890	2	KS	153	28
FL	715	3	NH	127	29
VA	596	4	LA	126	30
OH	593	5	KY	113	31
NY	542	6	IA	99	32
PA	494	7	NM	94	33
IL	430	8	MS	93	34
MI	420	9	OK	91	35
CO	392	10	AR	88	36
GA	372	11	UT	80	37
IN	348	12	NE	78	38
WA	341	13	AK	65	39
NC	326	14	MT	57	40
AZ	298	15	HI	55	41
NJ	261	16	ID	54	42
MD	248	17	ME	54	43
MO	233	18	WV	53	44
TN	219	19	SD	41	45
MA	197	20	ND	36	46
NV	195	21	DE	30	47
MN	184	22	DC	29	48
WI	177	23	VT	29	49
CT	169	24	WY	27	50
OR	164	25	RI	25	51
AL	158	26	XX	66	52

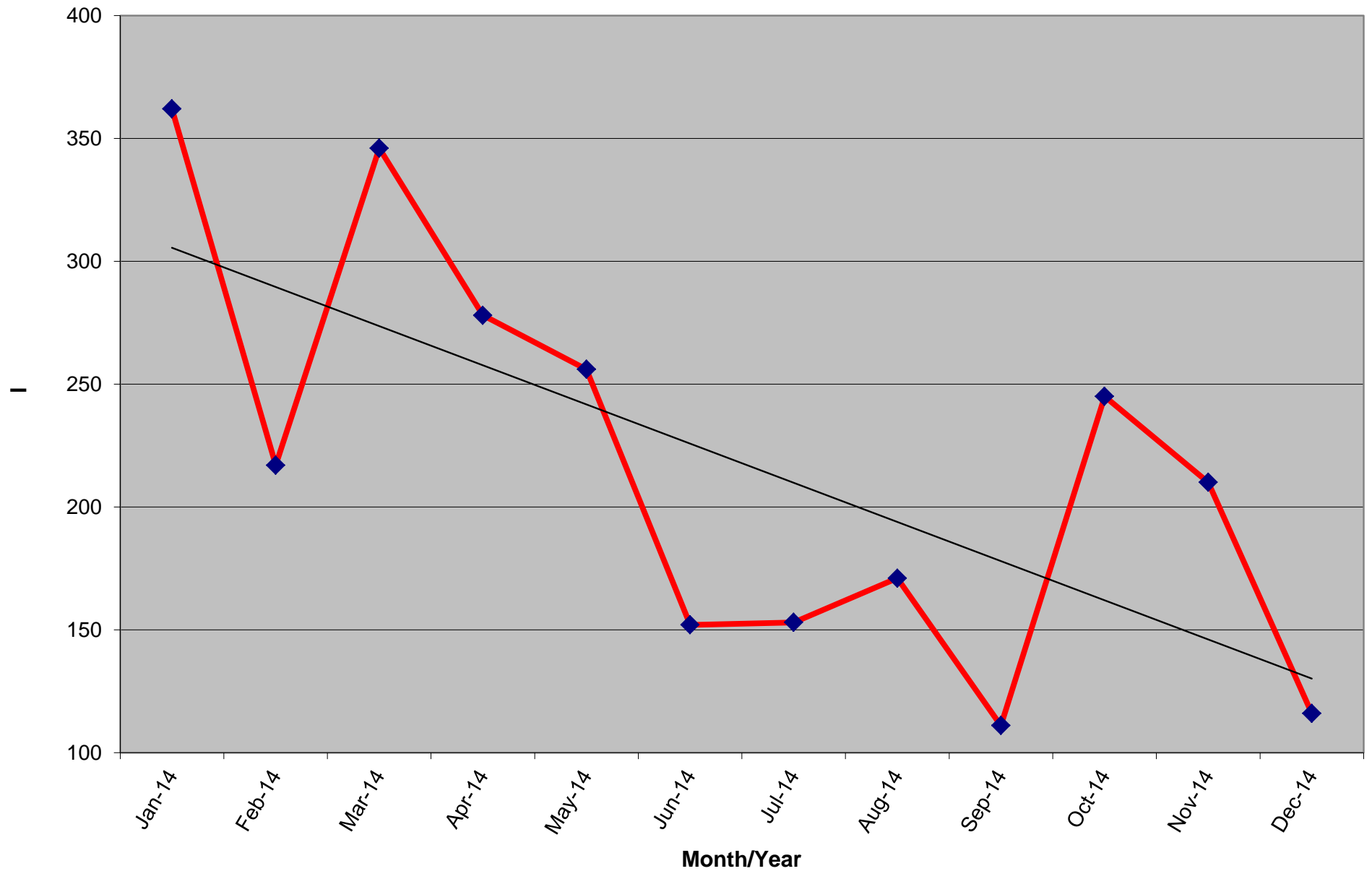
Active Donors - Past 12 Months



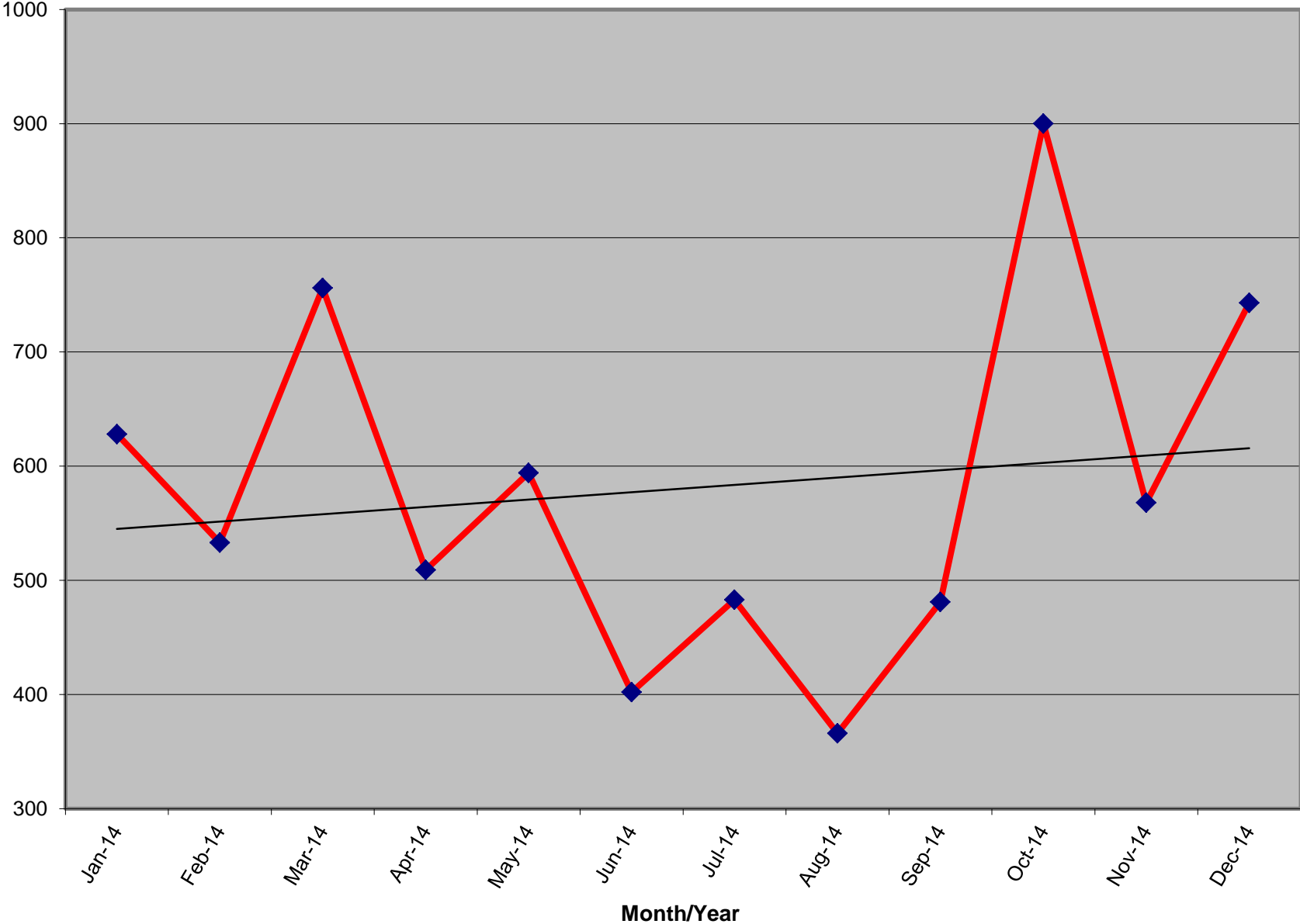
Lapsed - Dropped - Donors - Past 12 Months



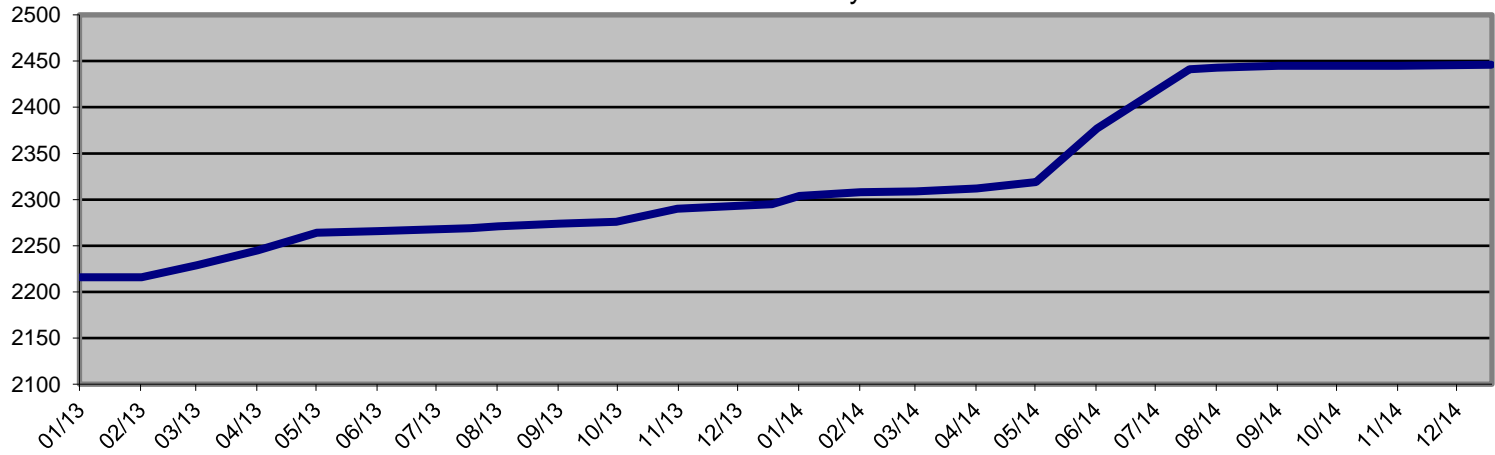
**New Donors Past 12 Months**



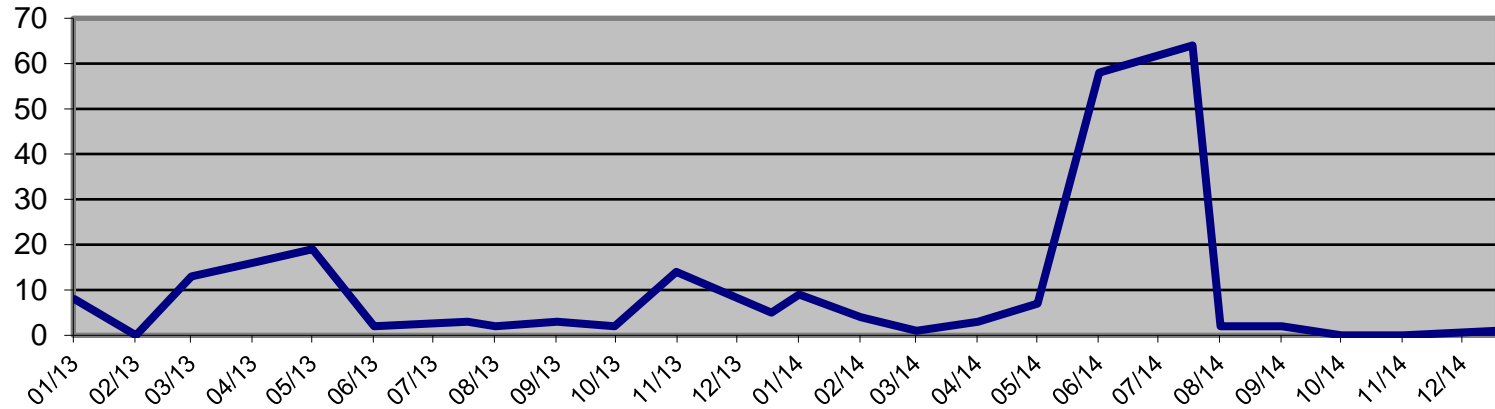
**Renew Donors - Past 12 Months**



Life Members - Total by Month



Life Members Increase by Month



Ave # of Life Members Increase Per Month Last 24 Months = 4.9 / Past Five Months Increase = 1.0 \*

\* Doesn't include June/July-14 due to Life Member push prior to increase from \$1000 to \$1500 for a Life Membership