

Libertarian National Committee - Membership Report

"Donor" Totals - Aug-19

4 Year & 12 Month Comparison

	Dec-15	Dec-16	Dec-17	Dec-18	Aug-18	Sep-18	Oct-18	Nov-18	Dec-18	Jan-19	Feb-19	Mar-19	Apr-19	May-19	Jun-19	Jul-19	Aug-19
Active w-MEM	11184	18592	14445	14494	15219	15134	15100	14955	14494	14278	14294	14271	14187	14224	14158	13895	13991
Active w/out MEM	509	1814	553	514	534	528	531	525	514	496	503	502	501	486	480	479	441
Total Active Donors	11693	20406	14998	15008	15753	15662	15631	15480	15008	14774	14797	14773	14688	14710	14638	14374	14432
Percent Change					1.88%	-0.58%	-0.20%	-0.97%	-3.05%	-1.56%	0.16%	-0.16%	-0.58%	0.15%	-0.49%	-1.80%	0.40%
Lapsed/Drop MEM	909	1016	1072	1184	794	896	969	962	1184	1077	839	1050	871	926	856	1132	1080
Lapse w/out MEM	30	27	23	27	21	32	29	30	27	21	15	23	24	51	17	20	50
Lapsed/Drop Total	939	1043	1095	1211	815	928	998	992	1211	1098	854	1073	895	977	873	1152	1130
Percent Change					1.49%	13.87%	7.54%	-0.60%	22.08%	-9.33%	-22.22%	25.64%	-16.59%	9.16%	-10.64%	31.96%	-1.91%
New Donors w-MEM	103	321	444	159	353	215	265	253	159	199	227	230	180	218	180	219	353
New w/out MEM	6	11	15	14	18	17	13	8	14	3	2	15	15	14	5	17	10
New Total	109	332	459	173	371	232	278	261	173	202	229	245	195	232	185	236	363
Percent Change					-33.87%	-37.47%	19.83%	-6.12%	-33.72%	16.76%	13.37%	6.99%	-20.41%	18.97%	-20.26%	27.57%	53.81%
Renewed w-MEM	792	723	651	564	729	596	670	564	564	662	628	797	607	745	610	650	823
Renewed w/out MEM	20	8	4	2	5	9	19	16	2	0	20	7	8	22	6	2	2
Total Renewals	812	731	655	566	734	605	689	580	566	662	648	804	615	767	616	652	825
Percent Change					9.39%	-17.57%	13.88%	-15.82%	-2.41%	16.96%	-2.11%	24.07%	-23.51%	24.72%	-19.69%	5.84%	26.53%
Total "MEM" *	135197	145814	138815	137321	136533	136720	136952	137205	137321	137535	137726	137974	138141	138361	138536	138757	139127
Percent Change					0.20%	0.14%	0.17%	0.18%	0.08%	0.16%	0.14%	0.18%	0.12%	0.16%	0.13%	0.16%	0.27%
Total "LIFETIME" *	2458	2571	2618	2652	2635	2643	2643	2646	2652	2652	2658	2668	2674	2679	2686	2687	2689
Total "BSM"	11045	19003	14668	14639	15298	15163	15150	15016	14639	14385	14372	14327	14324	14288	14208	13934	13963

Last Year vs. This Year

	Aug-18	Aug-19	Change	12 Mo Ave		
Active w-MEM	15219	13991	-8.07%	14415	<u>Active Donors w-MEM =</u>	13991
Active w/out MEM	534	441	-17.42%	499	<u>Lapsed & Zero Dues MEM =</u>	125136
Total Active Donors	15753	14432	-8.39%	14914	<u>Total "MEM" w-Signed Certificate =</u>	139127
Lapsed/Dropped	815	1130	38.65%	1015	<u>Member Signed Certificate =</u>	"MEM"
New Donors	371	363	-2.16%	236	<u>Total "BSM" =</u>	13963
Renewals	734	825	12.40%	669	<u>Bylaws Defined Sustaining Member =</u>	"BSM"

Aug-19 MEMBERSHIP BY STATE --- ACTIVE AND NON ACTIVE

SUSTAINING MEMBERSHIP STATE RANKINGS - "BSM"

STATE	TOTAL "MEM"	ACTIVE "MEM"	ACTIVE "SUB"	TOTAL "ACTIVE"	TOTAL "BSM"	STATE	TOTAL "MEM"	ACTIVE "MEM"	ACTIVE "SUB"	TOTAL "ACTIVE"	TOTAL "BSM"
AK	674	72	1	73	71	MT	579	63	2	65	62
AL	1860	188	4	192	191	NC	3576	375	6	381	378
AR	937	98	2	100	100	ND	249	29	4	33	27
AZ	3308	340	12	352	339	NE	670	81	1	82	82
CA	18649	1498	58	1556	1498	NH	1455	166	3	169	166
CO	3944	478	8	486	474	NJ	3029	291	10	301	288
CT	1493	155	5	160	160	NM	1198	143	2	145	143
DC	366	36	2	38	36	NV	1928	184	14	198	183
DE	420	45	4	49	45	NY	5125	705	23	728	697
FL	8428	795	28	823	796	OH	5180	653	10	663	652
GA	5896	405	12	417	408	OK	1136	146	0	146	144
HI	543	48	4	52	48	OR	2240	162	14	176	159
IA	1089	115	3	118	113	PA	5989	592	14	606	588
ID	820	67	2	69	68	RI	315	32	2	34	32
IL	4463	466	13	479	466	SC	2036	229	4	233	227
IN	3425	369	8	377	372	SD	282	43	1	44	42
KS	1201	123	3	126	123	TN	2774	344	3	347	346
KY	1251	124	5	129	121	TX	9806	1067	37	1104	1070
LA	1238	168	3	171	166	UT	1267	116	4	120	113
MA	2817	242	10	252	240	VA	4861	525	12	537	529
MD	2428	279	14	293	275	VT	402	34	3	37	33
ME	827	77	1	78	77	WA	4654	456	16	472	457
MI	5258	437	11	448	438	WI	2140	238	12	250	238
MN	2103	206	6	212	203	WV	624	63	0	63	63
MO	2391	227	9	236	226	WY	335	40	0	40	38
MS	744	81	4	85	82	XX	704	75	12	87	70

State	Total BSM	Rank	State	Total BSM	Rank
CA	1498	1	NH	166	27
TX	1070	2	CT	160	28
FL	796	3	OR	159	29
NY	697	4	OK	144	30
OH	652	5	NM	143	31
PA	588	6	KS	123	32
VA	529	7	KY	121	33
CO	474	8	IA	113	34
IL	466	9	UT	113	35
WA	457	10	AR	100	36
MI	438	11	MS	82	37
GA	408	12	NE	82	38
NC	378	13	ME	77	39
IN	372	14	AK	71	40
TN	346	15	ID	68	41
AZ	339	16	WV	63	42
NJ	288	17	MT	62	43
MD	275	18	HI	48	44
MA	240	19	DE	45	45
WI	238	20	SD	42	46
SC	227	21	WY	38	47
MO	226	22	DC	36	48
MN	203	23	VT	33	49
AL	191	24	RI	32	50
NV	183	25	ND	27	51
LA	166	26	XX	70	52
			Total:	13963	

TOTAL "MEM"	ACTIVE "MEM"	ACTIVE "SUB"	TOTAL "ACTIVE"	TOTAL "BSM"
TOTALS	139127	13991	441	14432

DEFINITIONS: MEM = Member Signed Certificate

Total MEM = Total # Constituents Per State w-Member Signed Certificate

ACTIVE MEM = Current Dues Paying or Lifetime Donor w-Signed Certificate

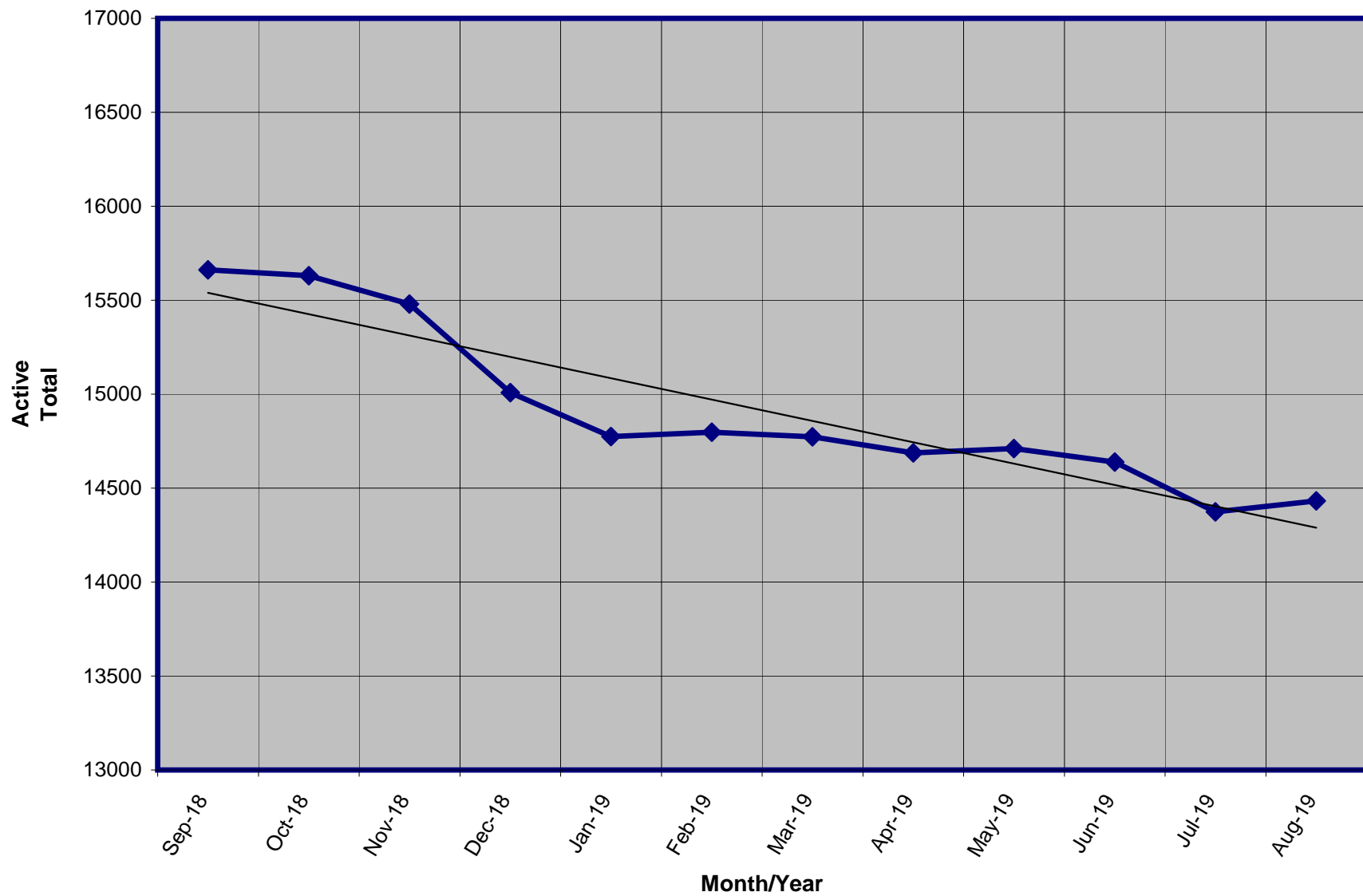
ACTIVE SUB (ACTIVE NON MEM) = Current Dues Paying or Lifetime Donors Who Have NOT Signed the Certificate (Formerly Called "Subscriber")

TOTAL ACTIVE = Current Dues Paying or Lifetime Donor

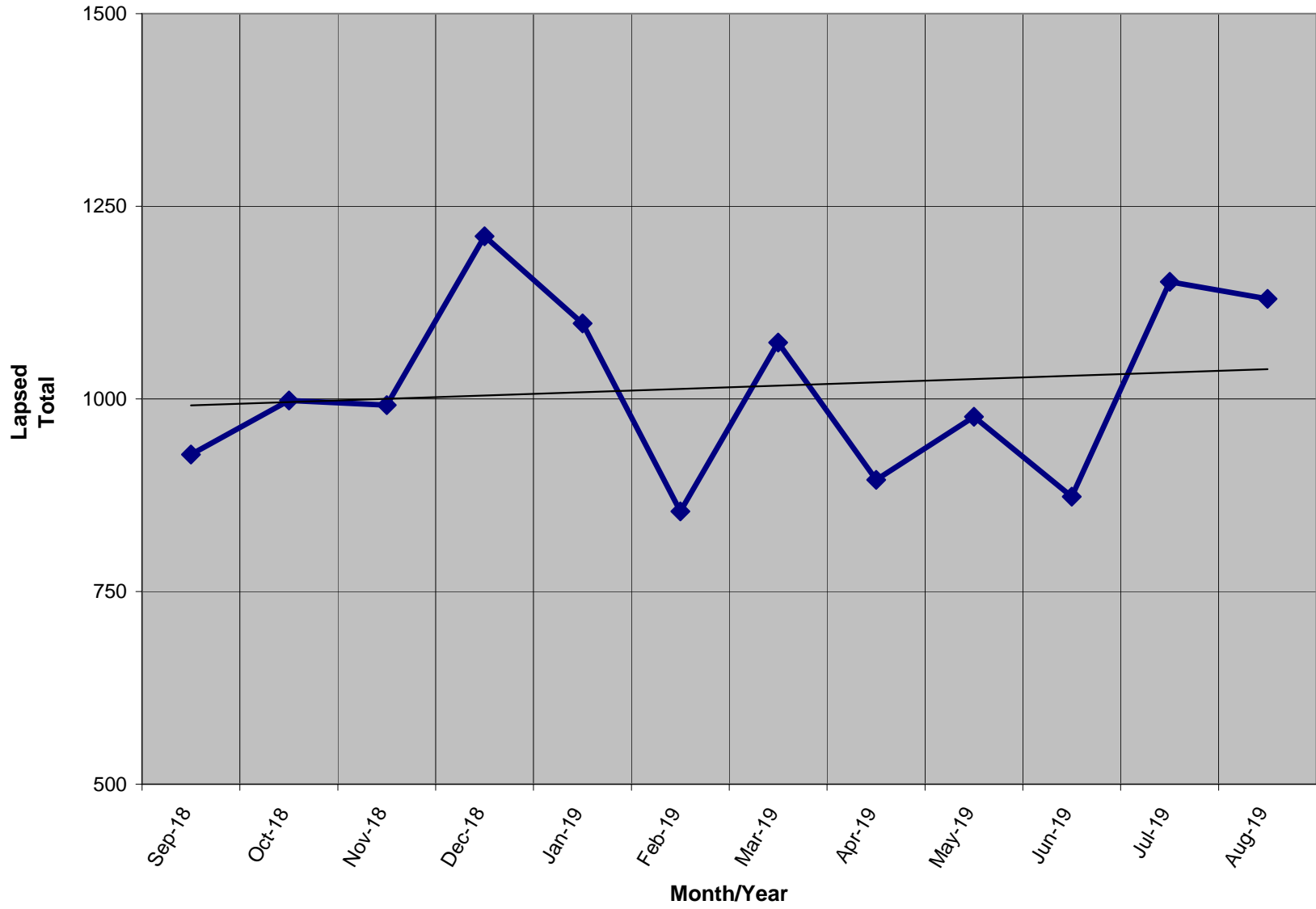
BSM = By Law Definition of "Sustaining Member" and number used for delegate count

(Art 5-3: "Sustaining member" is any Party member who has given at least \$25 to the Party in the prior twelve months, or who is a life member.)

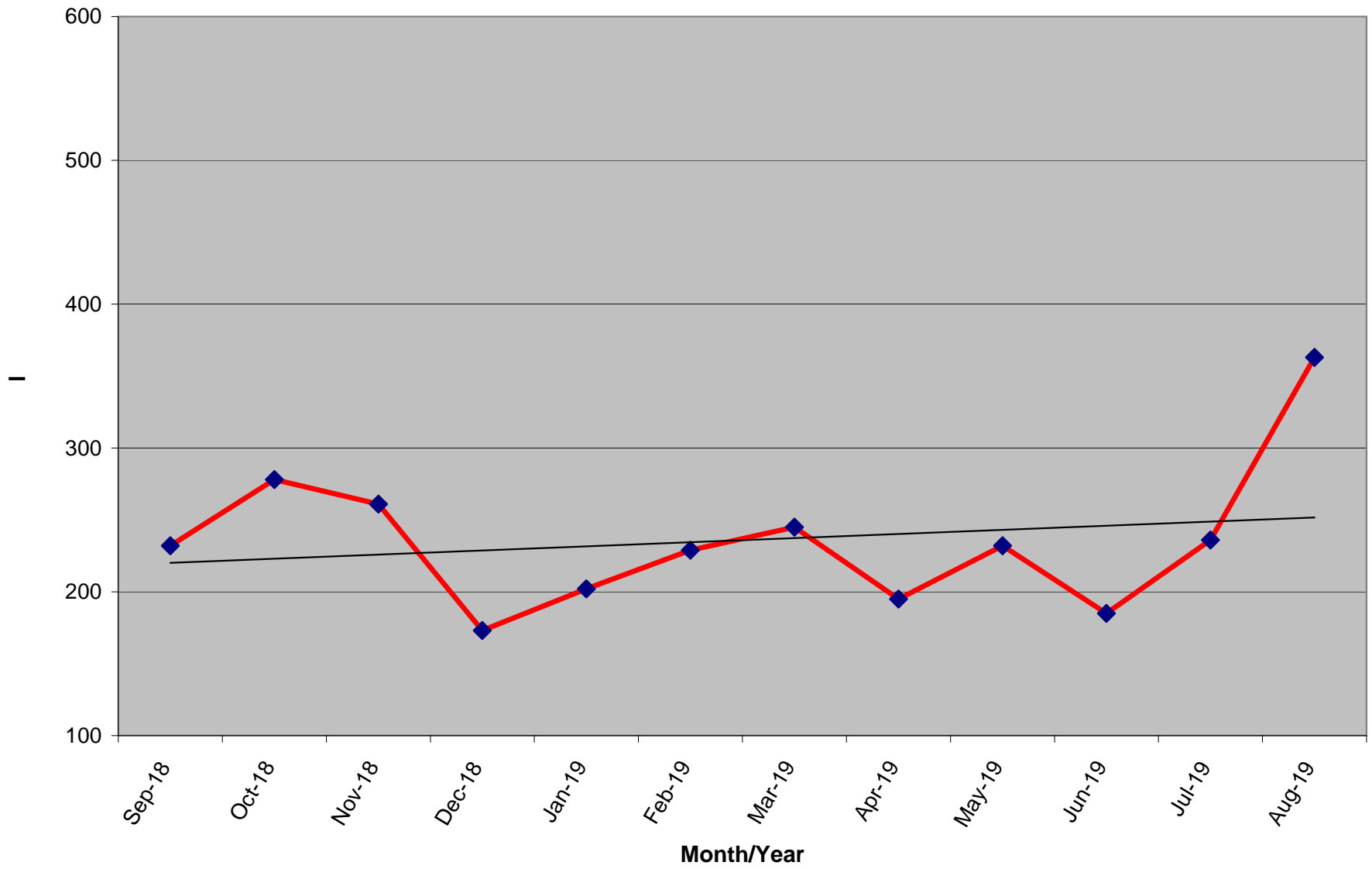
Active Donors - Past 12 Months



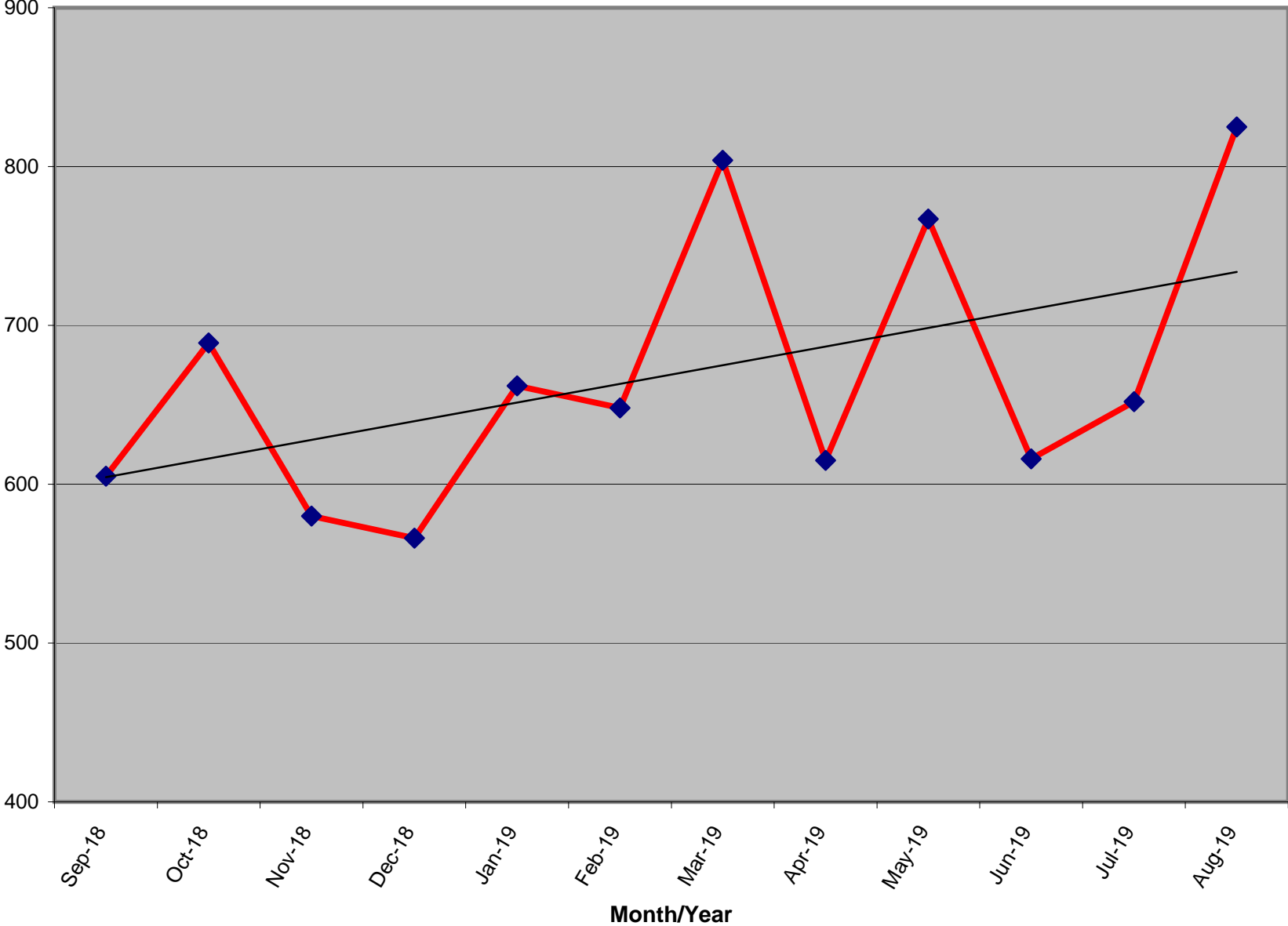
Lapsed - Dropped - Donors - Past 12 Months



New Donors Past 12 Months



Renew Donors - Past 12 Months



% OF ACTIVE MEMBERS VS. REGISTERED LIBERTARIAN VOTERS BY STATE

STATE	TI Reg Voters	Reg Lib	% Reg L to TI Reg	Total Active By State	Active to Registered
AK	520,646	7,593	1.46%	72	0.95%
AL	3,303,122	0	n/a	188	n/a
AR	1,744,141	348	0.02%	98	28.16%
AZ	3,774,016	32,056	0.85%	340	1.06%
CA	25,259,865	153,348	0.61%	1,498	0.98%
CO	3,219,953	36,911	1.15%	478	1.30%
CT	2,156,316	2,959	0.14%	155	5.24%
DC	473,526	1,025	0.22%	36	3.51%
DE	715,019	1,640	0.23%	45	2.74%
FL	13,694,743	31,682	0.23%	795	2.51%
GA	6,443,457	0	n/a	405	n/a
HI	716,458	0	n/a	48	n/a
IA	1,955,058	9,331	0.48%	115	1.23%
ID	801,151	6,482	0.81%	67	1.03%
IL	8,780,685	0	n/a	466	n/a
IN	4,355,147	0	n/a	369	n/a
KS	1,611,223	13,746	0.85%	123	0.89%
KY	3,346,095	8,250	0.25%	124	1.50%
LA	2,972,024	14,569	0.49%	168	1.15%
MA	4,574,967	15,787	0.35%	242	1.53%
MD	3,903,599	20,894	0.54%	279	1.34%
ME	1,028,602	5,554	0.54%	77	1.39%
MI	7,347,955	0	n/a	437	n/a
MN	3,268,360	0	n/a	206	n/a
MO	4,123,266	0	n/a	227	n/a
MS	2,044,713	0	n/a	81	n/a

Registration totals provided by Richard Winger as of 06/17

STATE	TI Reg Voters	Reg Lib	% Reg L to TI Reg	Total Active By State	Active to Registered
MT	695,971	0	n/a	63	n/a
NC	6,571,602	36,010	0.55%	375	1.04%
ND	429,978	0	n/a	29	n/a
NE	1,203,872	15,029	1.25%	81	0.54%
NH	961,819	162	0.02%	166	102.47%
NJ	5,778,406	8,874	0.15%	291	3.28%
NM	1,220,056	7,792	0.64%	143	1.84%
NV	1,543,822	15,486	1.00%	184	1.19%
NY	12,695,762	9,757	0.08%	705	7.23%
OH	7,914,320	0	n/a	653	n/a
OK	2,112,991	8,497	0.40%	146	1.72%
OR	2,652,935	18,962	0.71%	162	0.85%
PA	8,609,880	44,848	0.52%	592	1.32%
RI	772,360	0	n/a	32	n/a
SC	3,268,076	0	n/a	229	n/a
SD	550,529	1,893	0.34%	43	2.27%
TN	4,112,566	0	n/a	344	n/a
TX	14,748,880	0	n/a	1,067	n/a
UT	1,446,211	15,393	1.06%	116	0.75%
VA	5,473,173	0	n/a	525	n/a
VT	459,719	0	n/a	34	n/a
WA	4,646,246	0	n/a	456	n/a
WI	5,842,402	0	n/a	238	n/a
WV	1,228,123	5,616	0.46%	63	1.12%
WY	262,620	2,410	0.92%	40	1.66%
XX	356,791	0	n/a	75	n/a
Totals	207,693,217	552,904	0.56%	13,991	2.53%

% OF ACTIVE MEMBERS VS. 2010 CENSUS POPULATION BY STATE

STATE	2010 Census	TI Active By State	Active to Population
AK	710,231	72	0.0101%
AL	4,779,736	188	0.0039%
AR	2,915,918	98	0.0034%
AZ	6,392,017	340	0.0053%
CA	37,253,956	1,498	0.0040%
CO	5,029,196	478	0.0095%
CT	3,574,097	155	0.0043%
DC	601,723	36	0.0060%
DE	897,934	45	0.0050%
FL	18,801,310	795	0.0042%
GA	9,687,653	405	0.0042%
HI	1,360,301	48	0.0035%
IA	3,046,355	115	0.0038%
ID	1,567,582	67	0.0043%
IL	12,830,632	466	0.0036%
IN	6,483,802	369	0.0057%
KS	2,853,118	123	0.0043%
KY	4,339,367	124	0.0029%
LA	4,533,372	168	0.0037%
MA	6,547,629	242	0.0037%
MD	5,773,552	279	0.0048%
ME	1,328,361	77	0.0058%
MI	9,883,640	437	0.0044%
MN	5,303,925	206	0.0039%
MO	5,988,927	227	0.0038%
MS	2,967,297	81	0.0027%

ACTIVE TO POPULATION BY RANK

STATE	2010 Census	TI Active By State	Active to Population
MT	989,415	63	0.0064%
NC	9,535,483	375	0.0039%
ND	672,591	29	0.0043%
NE	1,826,341	81	0.0044%
NH	1,316,470	166	0.0126%
NJ	8,791,894	291	0.0033%
NM	2,059,179	143	0.0069%
NV	2,700,551	184	0.0068%
NY	19,378,102	705	0.0036%
OH	11,536,504	653	0.0057%
OK	3,751,351	146	0.0039%
OR	3,831,074	162	0.0042%
PA	12,702,379	592	0.0047%
RI	1,052,567	32	0.0030%
SC	4,625,364	229	0.0050%
SD	814,180	43	0.0053%
TN	6,346,105	344	0.0054%
TX	25,145,561	1,067	0.0042%
UT	2,763,885	116	0.0042%
VA	8,001,024	525	0.0066%
VT	625,741	34	0.0054%
WA	6,724,540	456	0.0068%
WI	5,686,986	238	0.0042%
WV	1,852,994	63	0.0034%
WY	563,626	40	0.0071%
Totals	308,745,538	13,916	0.0045%

STATE	Rank	TI Active By State	Active to Population
NH	1	166	0.0126%
AK	2	72	0.0101%
CO	3	478	0.0095%
WY	4	40	0.0071%
NM	5	143	0.0069%
NV	6	184	0.0068%
WA	7	456	0.0068%
VA	8	525	0.0066%
MT	9	63	0.0064%
DC	10	36	0.0060%
ME	11	77	0.0058%
IN	12	369	0.0057%
OH	13	653	0.0057%
VT	14	34	0.0054%
TN	15	344	0.0054%
AZ	16	340	0.0053%
SD	17	43	0.0053%
DE	18	45	0.0050%
SC	19	229	0.0050%
MD	20	279	0.0048%
PA	21	592	0.0047%
NE	22	81	0.0044%
MI	23	437	0.0044%
CT	24	155	0.0043%
ND	25	29	0.0043%
KS	26	123	0.0043%

STATE	Rank	TI Active By State	Active to Population
ID	27	67	0.0043%
TX	28	1,067	0.0042%
OR	29	162	0.0042%
FL	30	795	0.0042%
UT	31	116	0.0042%
WI	32	238	0.0042%
GA	33	405	0.0042%
CA	34	1,498	0.0040%
AL	35	188	0.0039%
NC	36	375	0.0039%
OK	37	146	0.0039%
MN	38	206	0.0039%
MO	39	227	0.0038%
IA	40	115	0.0038%
LA	41	168	0.0037%
MA	42	242	0.0037%
NY	43	705	0.0036%
IL	44	466	0.0036%
HI	45	48	0.0035%
WV	46	63	0.0034%
AR	47	98	0.0034%
NJ	48	291	0.0033%
RI	49	32	0.0030%
KY	50	124	0.0029%
MS	51	81	0.0027%
Totals		13,916	0.0045%

* 2010 US Census Figures - does not include PR or other territories or out of US ("XX" states)