

Libertarian National Committee - Membership Report

"Donor" Totals - Jul-19

4 Year & 12 Month Comparison

	Dec-15	Dec-16	Dec-17	Dec-18	Jul-18	Aug-18	Sep-18	Oct-18	Nov-18	Dec-18	Jan-19	Feb-19	Mar-19	Apr-19	May-19	Jun-19	Jul-19
Active w-MEM	11184	18592	14445	14494	14931	15219	15134	15100	14955	14494	14278	14294	14271	14187	14224	14158	13895
Active w/out MEM	509	1814	553	514	532	534	528	531	525	514	496	503	502	501	486	480	479
Total Active Donors	11693	20406	14998	15008	15463	15753	15662	15631	15480	15008	14774	14797	14773	14688	14710	14638	14374
Percent Change					2.85%	1.88%	-0.58%	-0.20%	-0.97%	-3.05%	-1.56%	0.16%	-0.16%	-0.58%	0.15%	-0.49%	-1.80%
Lapsed/Drop MEM	909	1016	1072	1184	784	794	896	969	962	1184	1077	839	1050	871	926	856	1132
Lapse w/out MEM	30	27	23	27	19	21	32	29	30	27	21	15	23	24	51	17	20
Lapsed/Drop Total	939	1043	1095	1211	803	815	928	998	992	1211	1098	854	1073	895	977	873	1152
Percent Change					-32.41%	1.49%	13.87%	7.54%	-0.60%	22.08%	-9.33%	-22.22%	25.64%	-16.59%	9.16%	-10.64%	31.96%
New Donors w-MEM	103	321	444	159	547	353	215	265	253	159	199	227	230	180	218	180	219
New w/out MEM	6	11	15	14	14	18	17	13	8	14	3	2	15	15	14	5	17
New Total	109	332	459	173	561	371	232	278	261	173	202	229	245	195	232	185	236
Percent Change					159.72%	-33.87%	-37.47%	19.83%	-6.12%	-33.72%	16.76%	13.37%	6.99%	-20.41%	18.97%	-20.26%	27.57%
Renewed w-MEM	792	723	651	564	670	729	596	670	564	564	662	628	797	607	745	610	650
Renewed w/out MEM	20	8	4	2	1	5	9	19	16	2	0	20	7	8	22	6	2
Total Renewals	812	731	655	566	671	734	605	689	580	566	662	648	804	615	767	616	652
Percent Change					-10.77%	9.39%	-17.57%	13.88%	-15.82%	-2.41%	16.96%	-2.11%	24.07%	-23.51%	24.72%	-19.69%	5.84%
Total "MEM" *	135197	145814	138815	137321	136255	136533	136720	136952	137205	137321	137535	137726	137974	138141	138361	138536	138757
Percent Change					0.44%	0.20%	0.14%	0.17%	0.18%	0.08%	0.16%	0.14%	0.18%	0.12%	0.16%	0.13%	0.16%
Total "LIFETIME" *	2458	2571	2618	2652	2636	2635	2643	2643	2646	2652	2652	2658	2668	2674	2679	2686	2687
Total "BSM"	11045	19003	14668	14639	14955	15298	15163	15150	15016	14639	14385	14372	14327	14324	14288	14208	13934

Last Year vs. This Year

	Jul-18	Jul-19	Change	12 Mo Ave		
Active w-MEM	14931	13895	-6.94%	14517	<u>Active Donors w-MEM =</u>	13895
Active w/out MEM	532	479	-9.96%	507	<u>Lapsed & Zero Dues MEM =</u>	124862
Total Active Donors	15463	14374	-7.04%	15024	<u>Total "MEM" w-Signed Certificate =</u>	138757
Lapsed/Dropped	803	1152	43.46%	989	<u>Member Signed Certificate =</u>	"MEM"
New Donors	561	236	-57.93%	237	<u>Total "BSM" =</u>	13934
Renewals	671	652	-2.83%	662	<u>Bylaws Defined Sustaining Member =</u>	"BSM"

Jul-19 MEMBERSHIP BY STATE --- ACTIVE AND NON ACTIVE

SUSTAINING MEMBERSHIP STATE RANKINGS - "BSM"

STATE	TOTAL "MEM"	ACTIVE "MEM"	ACTIVE "SUB"	TOTAL "ACTIVE"	TOTAL "BSM"	STATE	TOTAL "MEM"	ACTIVE "MEM"	ACTIVE "SUB"	TOTAL "ACTIVE"	TOTAL "BSM"
AK	678	69	1	70	70	MT	577	61	2	63	61
AL	1846	187	3	190	191	NC	3557	381	7	388	382
AR	934	100	2	102	101	ND	251	33	4	37	33
AZ	3288	334	13	347	334	NE	666	81	1	82	83
CA	18680	1501	61	1562	1510	NH	1451	162	3	165	165
CO	3927	461	9	470	455	NJ	3027	292	10	302	292
CT	1486	153	5	158	155	NM	1194	140	2	142	140
DC	368	37	2	39	36	NV	1909	174	17	191	172
DE	418	47	3	50	47	NY	5113	700	25	725	693
FL	8402	791	31	822	796	OH	5143	625	16	641	631
GA	5897	397	12	409	397	OK	1129	149	2	151	145
HI	543	52	4	56	52	OR	2234	162	14	176	158
IA	1085	121	3	124	115	PA	5984	591	19	610	595
ID	813	67	2	69	68	RI	314	31	2	33	32
IL	4461	464	13	477	465	SC	2010	215	2	217	211
IN	3419	372	9	381	374	SD	282	42	1	43	42
KS	1201	120	3	123	121	TN	2740	330	3	333	333
KY	1252	129	7	136	126	TX	9753	1050	38	1088	1064
LA	1233	165	5	170	165	UT	1255	109	4	113	109
MA	2823	239	12	251	240	VA	4854	535	14	549	544
MD	2428	283	16	299	280	VT	400	30	3	33	29
ME	826	77	1	78	77	WA	4639	460	15	475	463
MI	5243	445	12	457	448	WI	2137	244	12	256	249
MN	2103	203	8	211	200	WV	624	60	0	60	60
MO	2380	226	9	235	229	WY	332	39	1	40	40
MS	742	86	4	90	87	XX	706	73	12	85	69

State	Total BSM	Rank	State	Total BSM	Rank
CA	1510	1	NH	165	27
TX	1064	2	OR	158	28
FL	796	3	CT	155	29
NY	693	4	OK	145	30
OH	631	5	NM	140	31
PA	595	6	KY	126	32
VA	544	7	KS	121	33
IL	465	8	IA	115	34
WA	463	9	UT	109	35
CO	455	10	AR	101	36
MI	448	11	MS	87	37
GA	397	12	NE	83	38
NC	382	13	ME	77	39
IN	374	14	AK	70	40
AZ	334	15	ID	68	41
TN	333	16	MT	61	42
NJ	292	17	WV	60	43
MD	280	18	HI	52	44
WI	249	19	DE	47	45
MA	240	20	SD	42	46
MO	229	21	WY	40	47
SC	211	22	DC	36	48
MN	200	23	ND	33	49
AL	191	24	RI	32	50
NV	172	25	VT	29	51
LA	165	26	XX	69	52
			Total:	13934	

TOTAL	ACTIVE	ACTIVE	TOTAL	TOTAL
"MEM"	"MEM"	"SUB"	"ACTIVE"	"BSM"
TOTALS	138757	13895	479	14374

DEFINITIONS: MEM = Member Signed Certificate

Total MEM = Total # Constituents Per State w-Member Signed Certificate

ACTIVE MEM = Current Dues Paying or Lifetime Donor w-Signed Certificate

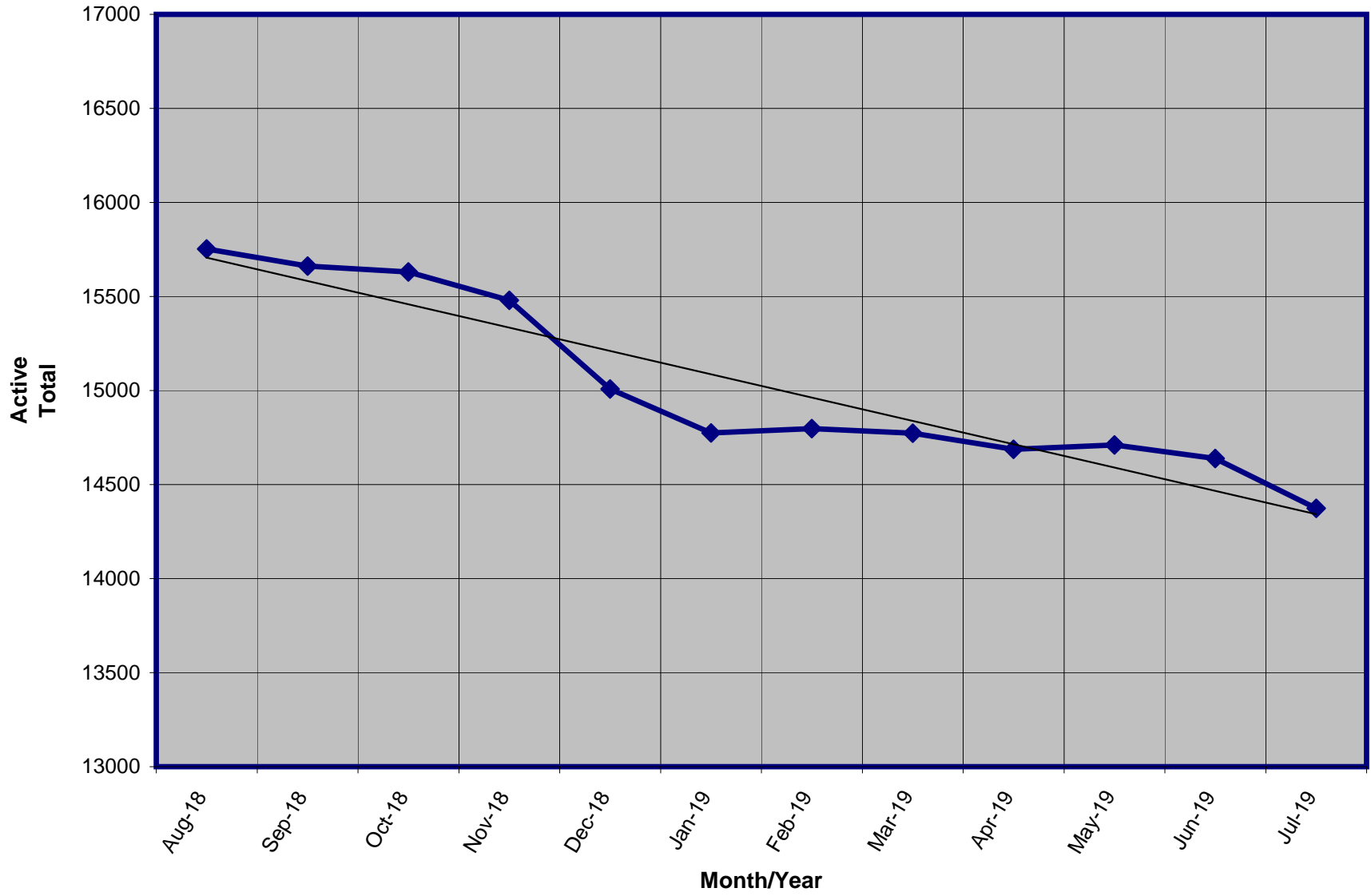
ACTIVE SUB (ACTIVE NON MEM) = Current Dues Paying or Lifetime Donors Who Have NOT Signed the Certificate (Formerly Called "Subscriber")

TOTAL ACTIVE = Current Dues Paying or Lifetime Donor

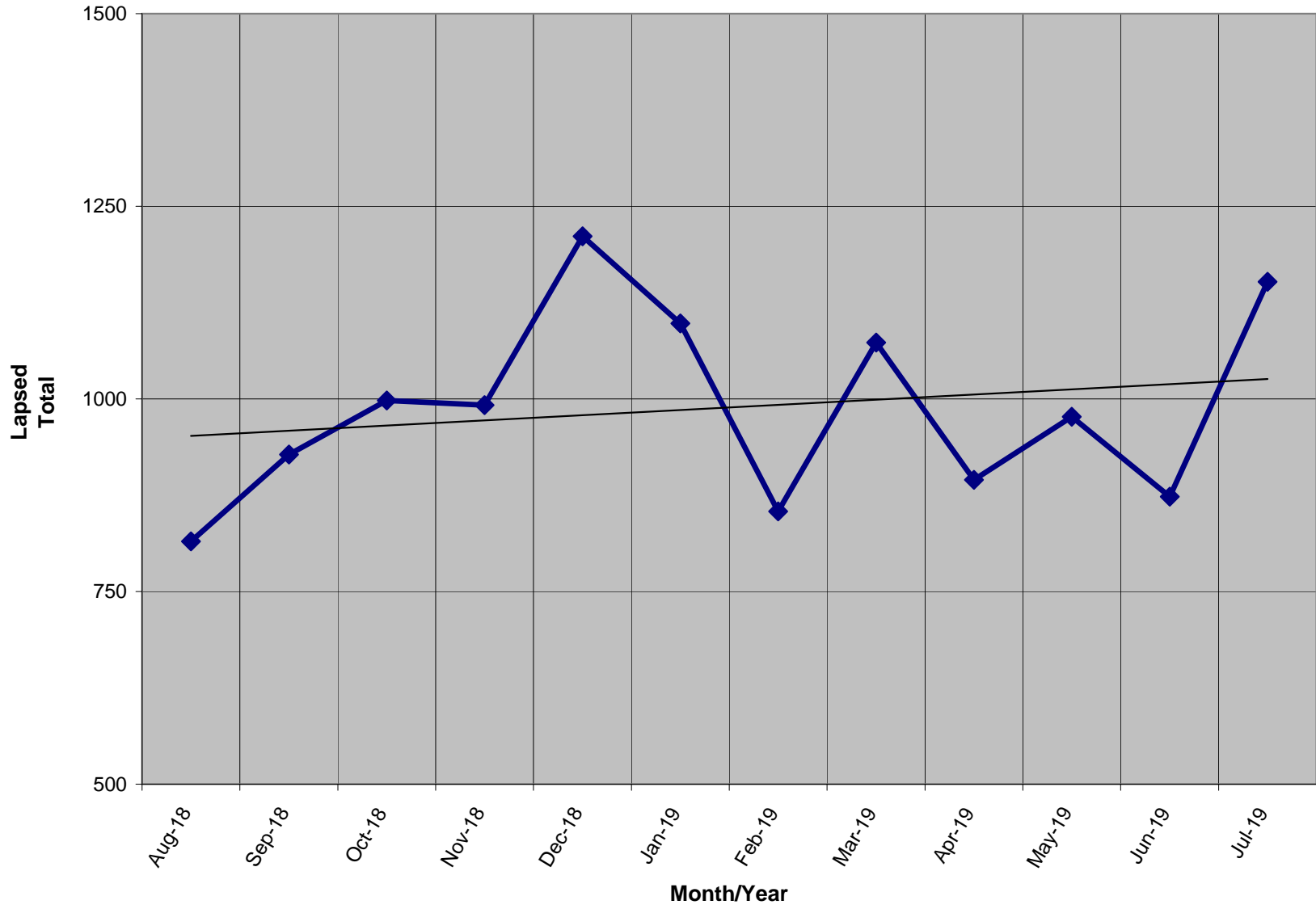
BSM = By Law Definition of "Sustaining Member" and number used for delegate count

(Art 5-3: "Sustaining member" is any Party member who has given at least \$25 to the Party in the prior twelve months, or who is a life member.)

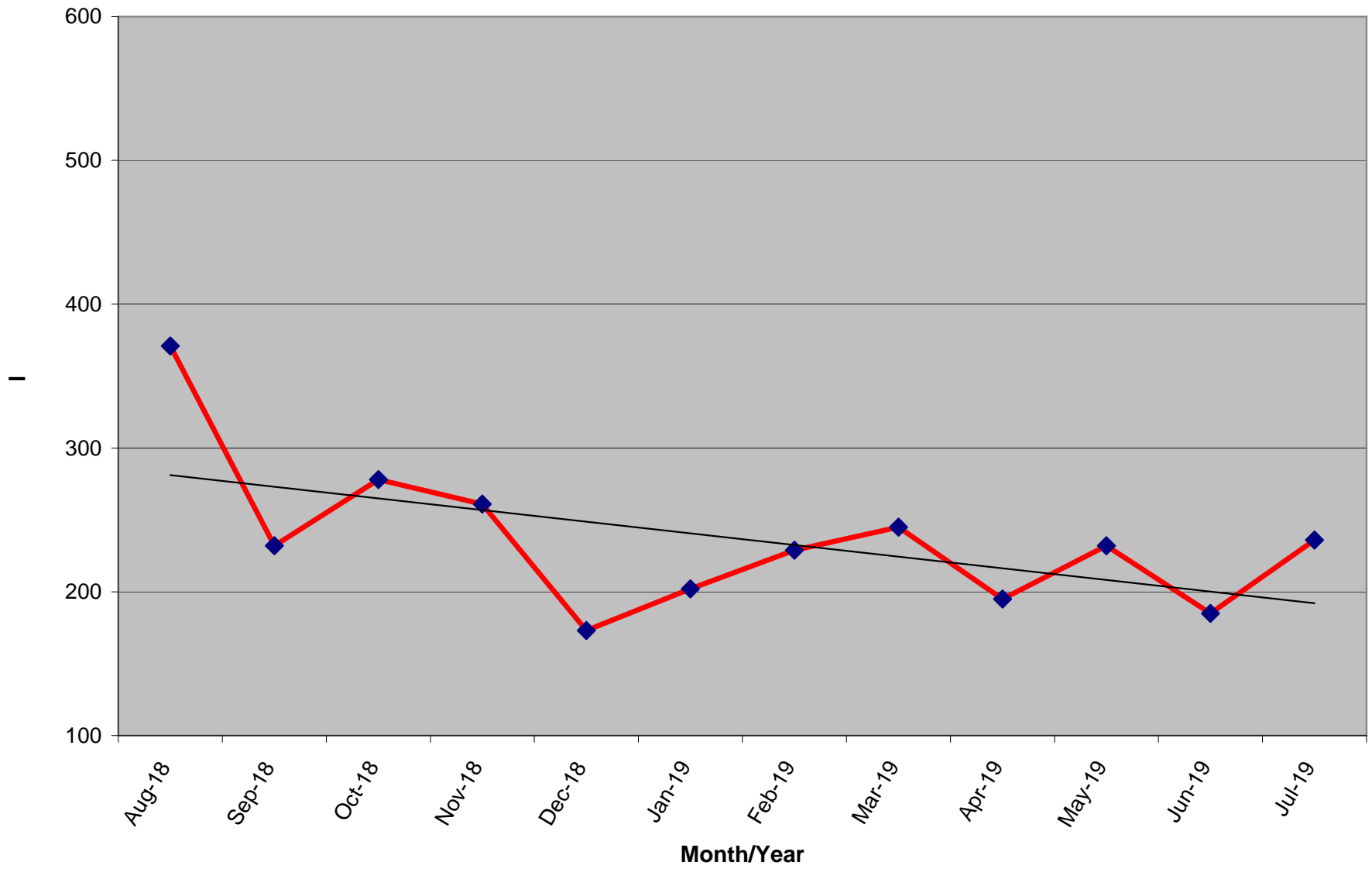
Active Donors - Past 12 Months



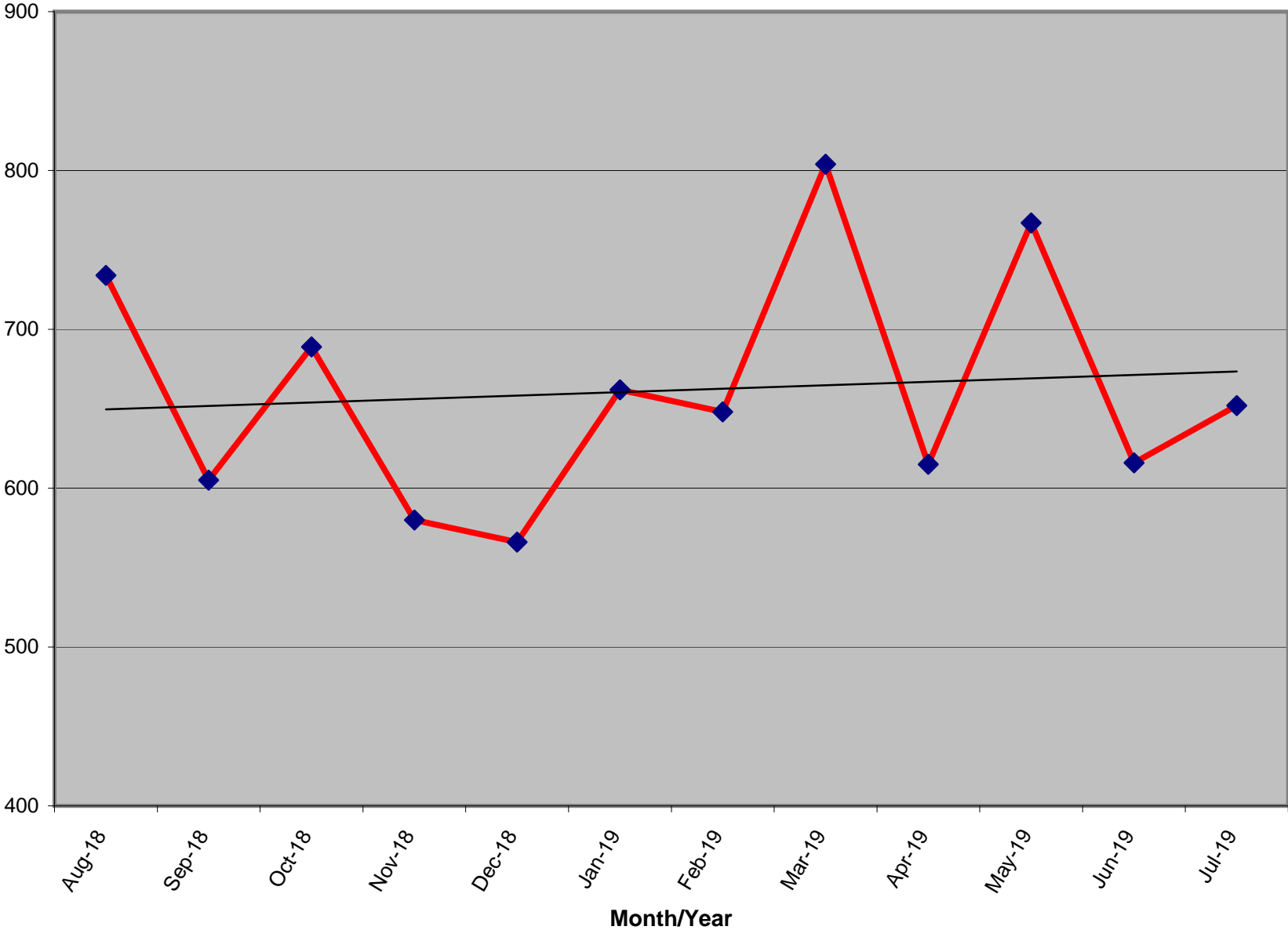
Lapsed - Dropped - Donors - Past 12 Months



New Donors Past 12 Months



Renew Donors - Past 12 Months



% OF ACTIVE MEMBERS VS. REGISTERED LIBERTARIAN VOTERS BY STATE

STATE	TI Reg Voters	Reg Lib	% Reg L to TI Reg	Total Active By State	Active to Registered
AK	520,646	7,593	1.46%	69	0.91%
AL	3,303,122	0	n/a	187	n/a
AR	1,744,141	348	0.02%	100	28.74%
AZ	3,774,016	32,056	0.85%	334	1.04%
CA	25,259,865	153,348	0.61%	1,501	0.98%
CO	3,219,953	36,911	1.15%	461	1.25%
CT	2,156,316	2,959	0.14%	153	5.17%
DC	473,526	1,025	0.22%	37	3.61%
DE	715,019	1,640	0.23%	47	2.87%
FL	13,694,743	31,682	0.23%	791	2.50%
GA	6,443,457	0	n/a	397	n/a
HI	716,458	0	n/a	52	n/a
IA	1,955,058	9,331	0.48%	121	1.30%
ID	801,151	6,482	0.81%	67	1.03%
IL	8,780,685	0	n/a	464	n/a
IN	4,355,147	0	n/a	372	n/a
KS	1,611,223	13,746	0.85%	120	0.87%
KY	3,346,095	8,250	0.25%	129	1.56%
LA	2,972,024	14,569	0.49%	165	1.13%
MA	4,574,967	15,787	0.35%	239	1.51%
MD	3,903,599	20,894	0.54%	283	1.35%
ME	1,028,602	5,554	0.54%	77	1.39%
MI	7,347,955	0	n/a	445	n/a
MN	3,268,360	0	n/a	203	n/a
MO	4,123,266	0	n/a	226	n/a
MS	2,044,713	0	n/a	86	n/a

Registration totals provided by Richard Winger as of 06/17

STATE	TI Reg Voters	Reg Lib	% Reg L to TI Reg	Total Active By State	Active to Registered
MT	695,971	0	n/a	61	n/a
NC	6,571,602	36,010	0.55%	381	1.06%
ND	429,978	0	n/a	33	n/a
NE	1,203,872	15,029	1.25%	81	0.54%
NH	961,819	162	0.02%	162	100.00%
NJ	5,778,406	8,874	0.15%	292	3.29%
NM	1,220,056	7,792	0.64%	140	1.80%
NV	1,543,822	15,486	1.00%	174	1.12%
NY	12,695,762	9,757	0.08%	700	7.17%
OH	7,914,320	0	n/a	625	n/a
OK	2,112,991	8,497	0.40%	149	1.75%
OR	2,652,935	18,962	0.71%	162	0.85%
PA	8,609,880	44,848	0.52%	591	1.32%
RI	772,360	0	n/a	31	n/a
SC	3,268,076	0	n/a	215	n/a
SD	550,529	1,893	0.34%	42	2.22%
TN	4,112,566	0	n/a	330	n/a
TX	14,748,880	0	n/a	1,050	n/a
UT	1,446,211	15,393	1.06%	109	0.71%
VA	5,473,173	0	n/a	535	n/a
VT	459,719	0	n/a	30	n/a
WA	4,646,246	0	n/a	460	n/a
WI	5,842,402	0	n/a	244	n/a
WV	1,228,123	5,616	0.46%	60	1.07%
WY	262,620	2,410	0.92%	39	1.62%
XX	356,791	0	n/a	73	n/a
Totals	207,693,217	552,904	0.56%	13,895	2.51%

% OF ACTIVE MEMBERS VS. 2010 CENSUS POPULATION BY STATE

STATE	2010 Census	TI Active By State	Active to Population
AK	710,231	69	0.0097%
AL	4,779,736	187	0.0039%
AR	2,915,918	100	0.0034%
AZ	6,392,017	334	0.0052%
CA	37,253,956	1,501	0.0040%
CO	5,029,196	461	0.0092%
CT	3,574,097	153	0.0043%
DC	601,723	37	0.0061%
DE	897,934	47	0.0052%
FL	18,801,310	791	0.0042%
GA	9,687,653	397	0.0041%
HI	1,360,301	52	0.0038%
IA	3,046,355	121	0.0040%
ID	1,567,582	67	0.0043%
IL	12,830,632	464	0.0036%
IN	6,483,802	372	0.0057%
KS	2,853,118	120	0.0042%
KY	4,339,367	129	0.0030%
LA	4,533,372	165	0.0036%
MA	6,547,629	239	0.0037%
MD	5,773,552	283	0.0049%
ME	1,328,361	77	0.0058%
MI	9,883,640	445	0.0045%
MN	5,303,925	203	0.0038%
MO	5,988,927	226	0.0038%
MS	2,967,297	86	0.0029%

ACTIVE TO POPULATION BY RANK

STATE	2010 Census	TI Active By State	Active to Population
MT	989,415	61	0.0062%
NC	9,535,483	381	0.0040%
ND	672,591	33	0.0049%
NE	1,826,341	81	0.0044%
NH	1,316,470	162	0.0123%
NJ	8,791,894	292	0.0033%
NM	2,059,179	140	0.0068%
NV	2,700,551	174	0.0064%
NY	19,378,102	700	0.0036%
OH	11,536,504	625	0.0054%
OK	3,751,351	149	0.0040%
OR	3,831,074	162	0.0042%
PA	12,702,379	591	0.0047%
RI	1,052,567	31	0.0029%
SC	4,625,364	215	0.0046%
SD	814,180	42	0.0052%
TN	6,346,105	330	0.0052%
TX	25,145,561	1,050	0.0042%
UT	2,763,885	109	0.0039%
VA	8,001,024	535	0.0067%
VT	625,741	30	0.0048%
WA	6,724,540	460	0.0068%
WI	5,686,986	244	0.0043%
WV	1,852,994	60	0.0032%
WY	563,626	39	0.0069%
Totals	308,745,538	13,822	0.0045%

STATE	Rank	TI Active By State	Active to Population
NH	1	162	0.0123%
AK	2	69	0.0097%
CO	3	461	0.0092%
WY	4	39	0.0069%
WA	5	460	0.0068%
NM	6	140	0.0068%
VA	7	535	0.0067%
NV	8	174	0.0064%
MT	9	61	0.0062%
DC	10	37	0.0061%
ME	11	77	0.0058%
IN	12	372	0.0057%
OH	13	625	0.0054%
DE	14	47	0.0052%
AZ	15	334	0.0052%
TN	16	330	0.0052%
SD	17	42	0.0052%
ND	18	33	0.0049%
MD	19	283	0.0049%
VT	20	30	0.0048%
PA	21	591	0.0047%
SC	22	215	0.0046%
MI	23	445	0.0045%
NE	24	81	0.0044%
WI	25	244	0.0043%
CT	26	153	0.0043%

STATE	Rank	TI Active By State	Active to Population
ID	27	67	0.0043%
OR	28	162	0.0042%
FL	29	791	0.0042%
KS	30	120	0.0042%
TX	31	1,050	0.0042%
GA	32	397	0.0041%
CA	33	1,501	0.0040%
NC	34	381	0.0040%
IA	35	121	0.0040%
OK	36	149	0.0040%
UT	37	109	0.0039%
AL	38	187	0.0039%
MN	39	203	0.0038%
HI	40	52	0.0038%
MO	41	226	0.0038%
MA	42	239	0.0037%
LA	43	165	0.0036%
IL	44	464	0.0036%
NY	45	700	0.0036%
AR	46	100	0.0034%
NJ	47	292	0.0033%
WV	48	60	0.0032%
KY	49	129	0.0030%
RI	50	31	0.0029%
MS	51	86	0.0029%
Totals		13,822	0.0045%

* 2010 US Census Figures - does not include PR or other territories or out of US ("XX" states)